

## Product datasheet for **RC209760**

### **WEE1 (NM\_003390) Human Tagged ORF Clone**

#### **Product data:**

Product Type:	Expression Plasmids
Product Name:	WEE1 (NM_003390) Human Tagged ORF Clone
Tag:	Myc-DDK
Symbol:	WEE1
Synonyms:	WEE1A; WEE1hu
Mammalian Cell Selection:	Neomycin
Vector:	pCMV6-Entry (PS100001)
E. coli Selection:	Kanamycin (25 ug/mL)



[View online »](#)

ORF Nucleotide  
Sequence:

>RC209760 representing NM\_003390  
Red=Cloning site Blue=ORF Green=Tags(s)

TTTTGTAATACGACTCACTATAGGGCGGCCGGGAATTCGTCGACTGGATCCGGTACCGAGGAGATCTGCC  
GCCGCGATCGCC

ATGAGTTCCTGAGCCGACAGCAGCCGCCACCCCGCCGCGCGGGGGCGCCTGCACCTTGCAGCAGAG  
AGCTGATCTTCTCGCCCTGCAGCGACTGTGAGGAGGAGGAAGAAGAGGAGGAGGAGGGCAGCGGCCA  
CAGCACCGGGGAGGACTCGGCCCTTCAAGAGCCGACTCGCCGCTGCCGCCCGCGGAGCCCCACGGAG  
CCCGGGCCGAGCGCCGCTCGCCGGGCGGCCCCCGGGAGCCCCGCGAGCTGGAGGAGGACCTGT  
TGCTGCCCGCGCCTGCCGGGCGGGACGAGGCGGGCGGTGGGCGGAGGGCGACTCGTGGGAGGAGGA  
GGGCTTCGGCTCCTCGTCGCGGTCAAGTCGCCGGCGGCCCTACTTCTGGGTAGCTCTTCTCGCCG  
GTGCGCTGCGGGGCCAGGAGATGCGTCGCCGGGGTTGCGGGGCGCGCGGGCGGGCGAAGGCCCGCC  
GCTCGCCGCGGCCGACCACCCGGGCACCCGCCACACAAGACCTTCGCAAGCTGCGACTCTTCGACAC  
CCCGCACAGCCCAAGAGTTTGCTCTCAAAGCTCGGGGAATTGATTCAGCTCTGTTAACTCCGGGGT  
AGTTCTCTCTTATGATACAGAAAAATCAGGAAAAAGGGAATTTGATGTGCGACAGACTCCTCAAGTGA  
ATATTAATCCTTTACTCCGATTCTTTGTTGCTTCACTCCTCAGGACAGTGTGCTGTAAGAAAGAGAAC  
GTATTGGAATGATTCTGTGGTGAAGACATGGAAGCCAGTGATTATGAGCTTGAAGATGAAACAAGACCT  
GCTAAGAGAATACAATTAAGAAAGCAATATGAAGTCCCGGTATACAACAGAAATTTATGAGCTAGAGA  
AAATCGGCTCTGGAGAATTTGGTCTGTATTTAAGTGTGTGAAGAGGCTGGATGGATGCATTTATGCCAT  
TAAGCGATCAAAAAGCCATTGGCGGGCTCTGTTGATGAGCAGAACGCTTTGAGAGAAGTATATGCTCAT  
GCAGTGTGGACAGCATTCTCATGTAGTTCGATATTTCTCTGCGTGGCAGAAGATGATCATATGCTTA  
TACAGAATGAATATCGTAATGGTGAAGTTTGTGCTGATGCTATAAGTGAAGTAACTACAGAATCATGATTA  
CTTTAAAGAAGCAGAGTTGAAGGATCTCCTTTTGAAGTTGGCCGAGGCTTGAGGTATATTCATTCAATG  
TCTTTGGTTCACATGGATATAAACCTAGTAATTTTTCATATCTCGAACCTCAATCCCAATGCTGCCCT  
CTGAAGAAGGAGACGAAGATGATTGGGCATCCAACAAAGTTATGTTTAAATAGGTGATCTTGGGCATGT  
AACAGGATCTCCAGTCCACAAGTTGAAGAGGGCGATAGTCGTTTTCTTGCAATGAAGTTTTACAGGAG  
AATTATACCCATCTACCAAAAGCAGATATTTTTGCGCTTGCCCTCACAGTGGTATGTGCTGCTGGTGTG  
AACCTCTCCGAGAAATGGAGATCAATGGCATGAAATCAGACAGGGTAGATTACCTCGGATACCACAAGT  
GCTTTCCAAGAATTTACAGAGTTGCTAAAAGTTATGATTCATCCAGATCCAGAGAGAAGACCTTCAGCA  
ATGGCACTGGTAAAGCATTCAAGTATTGCTGTCGCTTCTAGAAAGAGTGCAGAACAATTACGAATAGAAT  
TGAATGCCGAAAAGTTCAAAAATCACTTTTACAAAAGAACTCAAGAAAGCACAGATGGCAAAAGCTGC  
AGCTGAGGAAAAGAGCACTTCTACTGACCGGATGGCCACTAGGTCCACCACCCAGAGTAATAGAATCT  
CGACTTATTGAAAGAAAATGAACCGCTCTGTCAGCCTTACTATATAC

ACGCGTACGCGGCCGCTCGAGCAGAACTCATCTCAGAAGAGGATCTGGCAGCAATGATATCCTGGATT  
ACAAGGATGACGACGATAAGGTTTAA

**Protein Sequence:** >RC209760 representing NM\_003390  
Red=Cloning site Green=Tags(s)

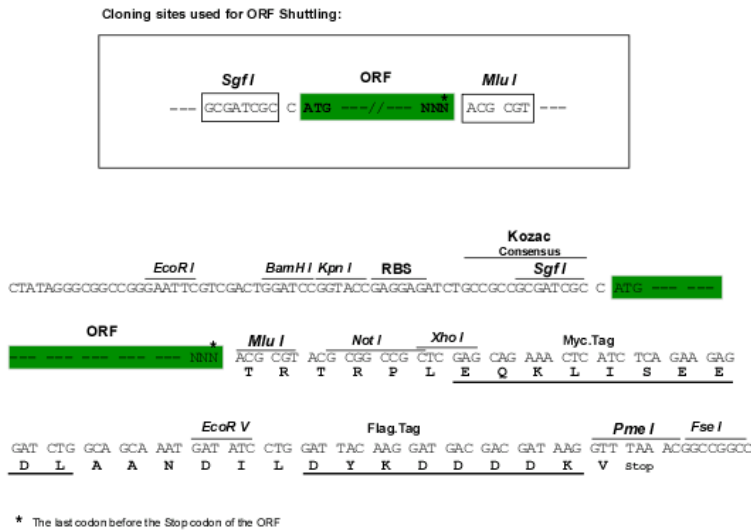
MSFLSRQQPPPPRRAGAACTLRQKLIFSPCSDCEEEEEEEEEEGSGHSTGEDSAFQEPDPSLPPARSPT  
 PGPERRRSPGPAPGSPGELEEDLLLPACPGADEAGGGAEGDSWEEEGFGSSSPVKSPAAPYFLGSSFS  
 VRCGGPGDASPRGCGARRAGEGRRSPRDHPGTPPHKTRKRLRFDTPHTPKSLLSKARGIDSSSVKLRG  
 SSLFMDTEKSGKREFDVRQTPQVNIINPFPDLSLLHSSGQCRRRKRTYWNDSGEGMEASDYELEDET  
 RPAKRITITESNMKSRYTTEFHELEKIGSGEFGSVFKCVKRLDGCYAIKRSKKPLAGSVDEQNALREY  
 YAHAVLQGHSHVVRYFSAWAEDDHMLIQNEYRNGGSLADAISENYRIMSIFYKEAELKDLLLQVGRGL  
 RYIHSMSLVHMDIKPSNIFISRTSIPNAAEEGDEDDWASNKVMFKIGDLGHVTRISSPQVEEGDSR  
 FLANEVLQENYTHLPKADIFALALTVCAAGAELPRNGDQWHEIRQGRLPRIPQVLSQEFTELLKVM  
 IHDPERRPSAMALVKHSVLLSASRKSAEQLRIELNAEKFNLSLLQKELKKAQMAKAAAEERALFT  
 DMRATRSTTQSNRTSRLIGKMMNRSVSLTIY

TRTRPLEQKLISEEDLAANDILDYKDDDDKV

**Chromatograms:** [https://cdn.origene.com/chromatograms/mg3219\\_h08.zip](https://cdn.origene.com/chromatograms/mg3219_h08.zip)

**Restriction Sites:** SgfI-MluI

**Cloning Scheme:**



**ACCN:** NM\_003390

**ORF Size:** 1938 bp

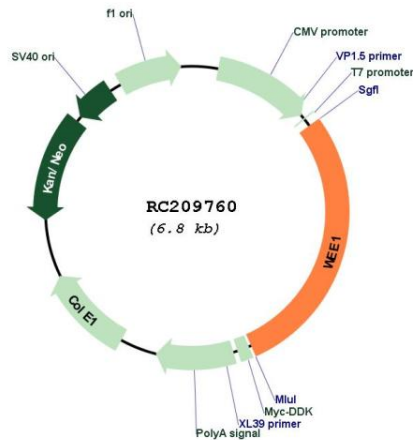
**OTI Disclaimer:** The molecular sequence of this clone aligns with the gene accession number as a point of reference only. However, individual transcript sequences of the same gene can differ through naturally occurring variations (e.g. polymorphisms), each with its own valid existence. This clone is substantially in agreement with the reference, but a complete review of all prevailing variants is recommended prior to use. [More info](#)

**OTI Annotation:** This clone was engineered to express the complete ORF with an expression tag. Expression varies depending on the nature of the gene.

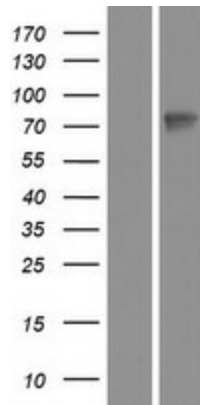
**Components:** The ORF clone is ion-exchange column purified and shipped in a 2D barcoded Matrix tube containing 10ug of transfection-ready, dried plasmid DNA (reconstitute with 100 ul of water).

<b>Reconstitution Method:</b>	<ol style="list-style-type: none"><li>1. Centrifuge at 5,000xg for 5min.</li><li>2. Carefully open the tube and add 100ul of sterile water to dissolve the DNA.</li><li>3. Close the tube and incubate for 10 minutes at room temperature.</li><li>4. Briefly vortex the tube and then do a quick spin (less than 5000xg) to concentrate the liquid at the bottom.</li><li>5. Store the suspended plasmid at -20°C. The DNA is stable for at least one year from date of shipping when stored at -20°C.</li></ol>
<b>Note:</b>	Plasmids are not sterile. For experiments where strict sterility is required, filtration with 0.22um filter is required.
<b>RefSeq:</b>	<a href="#">NM_003390.4</a>
<b>RefSeq Size:</b>	4232 bp
<b>RefSeq ORF:</b>	1941 bp
<b>Locus ID:</b>	7465
<b>UniProt ID:</b>	<a href="#">P30291</a>
<b>Cytogenetics:</b>	11p15.4
<b>Domains:</b>	pkinase, TyrKc, S_TKc
<b>Protein Families:</b>	Druggable Genome, Protein Kinase, Stem cell - Pluripotency
<b>Protein Pathways:</b>	Cell cycle
<b>MW:</b>	71.4 kDa
<b>Gene Summary:</b>	This gene encodes a nuclear protein, which is a tyrosine kinase belonging to the Ser/Thr family of protein kinases. This protein catalyzes the inhibitory tyrosine phosphorylation of CDC2/cyclin B kinase, and appears to coordinate the transition between DNA replication and mitosis by protecting the nucleus from cytoplasmically activated CDC2 kinase. [provided by RefSeq, Jul 2008]

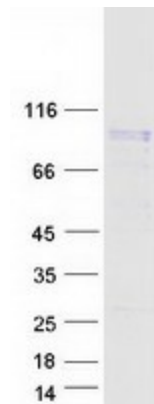
Product images:



Circular map for RC209760



Western blot validation of overexpression lysate (Cat# [LY418682]) using anti-DDK antibody (Cat# [TA50011-100]). Left: Cell lysates from untransfected HEK293T cells; Right: Cell lysates from HEK293T cells transfected with RC209760 using transfection reagent MegaTran 2.0 (Cat# [TT210002]).



Coomassie blue staining of purified WEE1 protein (Cat# [TP309760]). The protein was produced from HEK293T cells transfected with WEE1 cDNA clone (Cat# RC209760) using MegaTran 2.0 (Cat# [TT210002]).