

## Product datasheet for RC209755

### USP25 (NM\_013396) Human Tagged ORF Clone

#### Product data:

Product Type:	Expression Plasmids
Product Name:	USP25 (NM_013396) Human Tagged ORF Clone
Tag:	Myc-DDK
Symbol:	USP25
Synonyms:	USP21
Mammalian Cell Selection:	Neomycin
Vector:	pCMV6-Entry (PS100001)
E. coli Selection:	Kanamycin (25 ug/mL)
ORF Nucleotide Sequence:	>RC209755 representing NM_013396 Red=Cloning site Blue=ORF Green=Tags(s)

TTTTGTAATACGACTCACTATAGGGCGGCCGGAATTCGTCGACTGGATCCGGTACCGAGGAGATCTGCC  
GCC**CGATCGCC**

ATGACCGTGGAGCAGAACGTGCTGCAGCAGAGCGCGGCGCAGAAGCACCAGCAGACGTTTTTGAATCAAC  
TGAGAGAAATTACGGGGATTAATGACACCCAGATACTACAGCAAGCCTTGAAGGATAGTAATGGAACTT  
GGAATTAGCAGTGGCTTTCCTTACTGCGAAGAATGCTAAGACCCCTCAGCAGGAGGAGACAACCTTACTAC  
CAAACAGCACTTCTGGCAATGATAGATACATCAGTGTGGGAAGCCAAGCAGATACAAATGTGATTGATC  
TCACTGGAGATGATAAAGATGATCTTCAGAGAGCAATTGCCTTGAGTTTGCCGAATCAAACAGGGCATT  
CAGGGAGACTGGAATAACTGATGAGGAACAAGCCATTAGCAGAGTTCCTGAAGCCAGCATAGCAGAGAAT  
AAAGCATGTTTGAAGAGGACACCTACAGAAGTTTGGAGGGATTCTCGAAACCCCTTATGATAGAAAAAGAC  
AGGACAAAGCTCCCGTTGGGCTAAAGAATGTTGGCAATACTTGTGGTTTGTGCTGTTATTTCAGTCATT  
ATTTAATCTTTTGAATTTAGAAGATTAGTTCTGAATTACAAGCCTCCATCAAATGCTCAAGATTTACCC  
CGAAACCAAAAGGAACATCGGAATTTGCCTTTTATGCGTGAGCTGAGGTATCTATTTGCACCTTCTTGTG  
GTACCAAAAGGAAGTATGTTGATCCATCAAGAGCAGTTGAAATTCCTAAGGATGCTTTCAAATCAAATGA  
CTCACAGCAGCAAGATGTGAGTGAGTTTACACACAATTTATTAGATTGGTTAGAAGATGCCTTCCAATG  
AAAGCTGAAGAGGAGACGGATGAAGAGAAGCCAAGAACCCTGATGAGTTGTTCTATGGCAGATTCC  
TGGCTGTGGGAGTACTTGAAGGTAATAAATTTGAAAACACTGAAATGTTTGGTCACTACCCACTCAGGT  
CAATGGTTCAAAGATCTGCATGAGTGCCTAGAAGCTGCAATGATTGAAGGAGAAATGAGTCTTTACAT  
TCAGAGAATTCAGGAAAATCAGGCCAAGAGCATTGGTTTACTGAATTACCACCTGTGTTAACATTTGAAT  
TGTCAAGATTTGAATTTAATCAGGCATTGGGAAGACCAGAAAAAATTCACAACAAATTAGAATTTCCCA  
AGTTTTATATTTGGACAGATACATGCACAGAAACAGAGAATAACAAGAATTAAGAGGGAAGAGATCAAG  
AGACTGAAAGATTACCTCAGGTATTACAACAAAGGCTAGAAAGATATTTAAGCTATGGTTCCGGTCCCA  
AACGATTTCCCTTGGTAGATGTTCTTCAGTATGCATTGGAATTTGCCTCAAGTAAACCTGTTTGCACCTC  
TCCTGTTGACGATATTGACGCTAGTTCCACCTAGTGGTTCCATACCATCACAGACATTACCAAGCACA



[View online >](#)

ACAGAACAACAGGGAGCCCTATCTTCAGAACTGCCAAGCACATCACCTTCATCAGTTGCTGCCATTCAT  
 CGAGATCAGTAATACACAAACCATTTACTCAGTCCCGGATACCTCCAGATTTGCCATGCATCCGGCACC  
 AAGGCACATAACGGAGGAAGAACTTTCTGTGCTGGAAAGTTGTTTACATCGCTGGAGGACAGAAATAGAA  
 AATGACACCAGAGATTTGAGGAAAGCATATCCAGAATCCATCGAACAATTGAATTAATGTACTCTGACA  
 AATCTATGATACAAGTTCCTTATCGATTACATGCCGTTTTAGTTCACGAAGGCCAAGCTAATGCTGGCA  
 CTACTGGGCATATATTTTATGATCATCGTGAAGCAGATGGATGAAGTACAATGATATTGCTGTGACAAAA  
 TCATCATGGGAAGAGCTAGTGGGGACTCTTTTGGTGGTTATAGAAATGCCAGTGCATACCTGTTTAAATG  
 ACATAAATGATAAGGCACAGTTCCTAATACAAGAGGAGTTAATAAAGAACTGGGCAGCCCTTGTGG  
 TATAGAAACATTACCACCGATTGAGAGATTTTGTGAGGAAGACAACCAACGATTTGAAAAAGAACTA  
 GAAGAATGGGATGCACAACCTGCCAGAAAGCTTTGCAGGAAAAGCTTTTACGCTCTCAGAAATTGAGAG  
 AGTCAGAGACTTCTGTGACAACAGCACAAGCAGCAGGAGACCCAGAATATCTAGAGCAGCCATCAAGAAG  
 TGATTTCTCAAAGCACTTGAAGAAGAACTATTCAAATAATTACCAAGGCATCACATGAGCATGAAGAT  
 AAAAGTCTGAAACAGTTTTGCAGTCGGCAATTAAGTTGGAATATGCAAGTTGGTTAAGTTGGCCCAAG  
 AAGACACCCACCAGAAACCGATTATCGTTTACATCATGTAGTGGTCTACTTTATCCAGAACCAGGCACC  
 AAAGAAAATTATTGAGAAAACATTACTAGAACAATTTGGAGATAGAAATTTGAGTTTTGATGAAAGTGT  
 CACAACATAATGAAAGTTGCTCAAGCCAACTGGAAATGATAAACTGAAGAAGTAACTTGGAGGAAT  
 ATGAGGAGTGGCATCAGGATTATAGGAAATTCAGGAAAACAATATGTATCTCATAAATTGGGCTAGAAAA  
 TTTTCAAAGAGAAAGTTATATAGATTCTTGTGTTTCTCATCTGTGCTTATCAGAAACAAGAACTC  
 TTGTCTAAAGGCTTATACAGAGGACATGATGAAGAATTGATATCACATTATAGAAGAGAATGTTTGTCTAA  
 AATTAATGAGCAAGCCGAGAACTCTTCGAATCTGGAGAGGATCGAGAAGTAAACAATGGTTTGATTAT  
 CATGAATGAGTTTATTGTCCATTTTGGCATTATTACTGGTGGATGAAATGGAAGAAAAGGATATACTA  
 GCTGTAGAAGATATGAGAAATCGATGGTGTCTACCTTGGTCAAGAAATGGAACACACCTCCAAGAAA  
 AGCTGACAGATTTTTGCCAAAACCTGCTTATTGTTCTATGGAGATTAAGTTTCCATGAGCCACCGAA  
 GTTACCTCATATTCACGCATGAACCTGTGAGCGATTGCCCCAATCATGTTGTCCTCAGTCGAAC  
 CCTGCTGATGGAAGA

ACGCGTACGCGGCCGCTCGAGCAGAACTCATCTCAGAAGAGGATCTGGCAGCAATGATATCCTGGATT  
 ACAAGGATGACGACGATAAGGTTTAA

**Protein Sequence:**

>RC209755 representing NM\_013396  
 Red=Cloning site Green=Tags(s)

MTVEQNVLQQSAAQKHQQTFLNQLREITGINDTQILQQALKDSNGNLELAVAFLLAKNAKTPQEEETTY  
 QTALPGNDRIYISVGSQADTNVIDLTGDDKDDLQRAIALSLAESNRAFRETGITDEEQAISRVLEASIAEN  
 KACLKRTPEVWRDSRNPYDRKRQDKAPVGLKNVGNTCWFSAVIQSLFNLLFRRLVLYNKPSSNAQDLP  
 RNQKEHRNLPFMRELYLRFALLVGTKRKYVDPSRAVEILKDAFKSNDSSQQQDVSEFTHKLLDWLEDAFQM  
 KAEETDEEKPKNPMVELFYGRFLAVGVLEGGKFENTEMFGQYPLQVNGFKDLHECLEAAMIEGEIESLH  
 SENSQSGQEHWFTELPVLTFFELSRFEFNQALGRPEKIHNKLEFPQVLYLDRYMHRNREITRIKREEIK  
 RLKDYLTVLQQLRLERYLSYSGSGPKRFPLVDVLYALEFASSKPVCTSPVDDIDASSPPSGSIPSTLPST  
 TEQQGALSSSELPSTSPSSVAAISSRSVIHKPFTQSRIPDLPMPHPAPRHITEEELSVLESCLHRWRTEIE  
 NDTRDLQESISRIHRTIELMYSKSMIQVYRHLAVLVHEGQANAGHYWAYIFDHRESRWKYNDAVTK  
 SSWEELVRDSFGGYRNASAYCLMYINDKAQFLIQEEFNKETGQPLVGIETLPPDLRDFVEEDNQRFKEL  
 EEWDAQLAQKALQEKLLASQKLRETSVTTAQAAGDPEYLEQPSRSDFSKHLKEETIQIITKASHEHD  
 KSPETVLQSAIKLEYARLVKLAQEDTPPETDYRLHHVVVYFIQNQAPKKIEKTLLEQFGDRNLSFDERC  
 HNIMKVAQAKLEMIKPEEVNLEEYEEWHQDYRKFRETTMYLIIGLENFQRESYIDSLFLICAYQNNKEL  
 LSKGLYRGHDEELISHYRRECLLKLNEQAAELFESGEDREVNGLIIMNEFIVPFLPLLVDEMEEKDIL  
 AVEDMRNRWCSYLGQEMEPHLQEKLTDFLPKLLDCSMEIKSFHEPPKLPSTHELCERFARIMLSLRSRT  
 PADGR

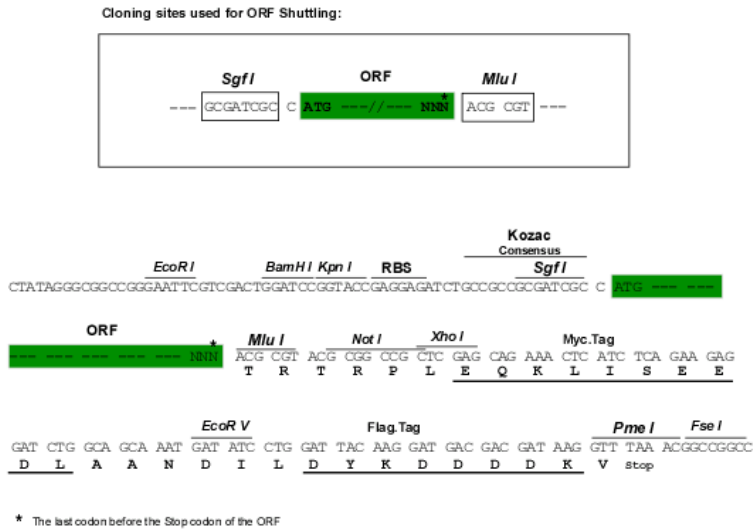
TRTRPLEQKLISEEDLAANDILDYKDDDDKV

**Chromatograms:**

[https://cdn.origene.com/chromatograms/mg2901\\_a05.zip](https://cdn.origene.com/chromatograms/mg2901_a05.zip)

**Restriction Sites:** SgfI-MluI

**Cloning Scheme:**



**ACCN:** NM\_013396

**ORF Size:** 3165 bp

**OTI Disclaimer:** The molecular sequence of this clone aligns with the gene accession number as a point of reference only. However, individual transcript sequences of the same gene can differ through naturally occurring variations (e.g. polymorphisms), each with its own valid existence. This clone is substantially in agreement with the reference, but a complete review of all prevailing variants is recommended prior to use. [More info](#)

**OTI Annotation:** This clone was engineered to express the complete ORF with an expression tag. Expression varies depending on the nature of the gene.

**Components:** The ORF clone is ion-exchange column purified and shipped in a 2D barcoded Matrix tube containing 10ug of transfection-ready, dried plasmid DNA (reconstitute with 100 ul of water).

**Reconstitution Method:**

1. Centrifuge at 5,000xg for 5min.
2. Carefully open the tube and add 100ul of sterile water to dissolve the DNA.
3. Close the tube and incubate for 10 minutes at room temperature.
4. Briefly vortex the tube and then do a quick spin (less than 5000xg) to concentrate the liquid at the bottom.
5. Store the suspended plasmid at -20°C. The DNA is stable for at least one year from date of shipping when stored at -20°C.

**RefSeq:** [NM\\_013396.6](#)

**RefSeq Size:** 4968 bp

**RefSeq ORF:** 3168 bp

**Locus ID:** 29761

**UniProt ID:** [Q9UHP3](#)

**Cytogenetics:** 21q21.1

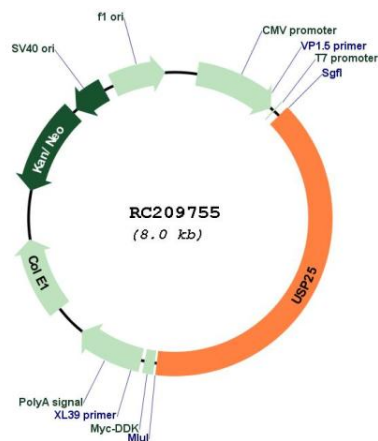
**Domains:** UCH, UIM

**Protein Families:** Protease

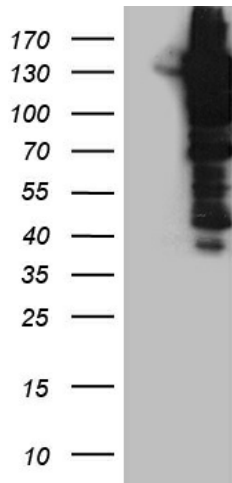
**MW:** 122 kDa

**Gene Summary:** Ubiquitin (MIM 191339) is a highly conserved 76-amino acid protein involved in regulation of intracellular protein breakdown, cell cycle regulation, and stress response. Ubiquitin is released from degraded proteins by disassembly of the polyubiquitin chains, which is mediated by ubiquitin-specific proteases (USPs), such as USP25 (Valero et al., 1999 [PubMed 10644437]).[supplied by OMIM, Mar 2008]

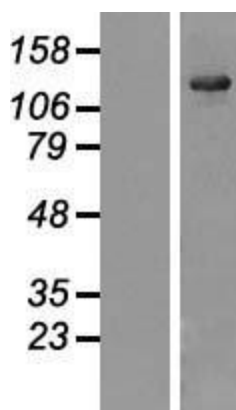
**Product images:**



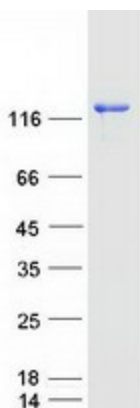
Circular map for RC209755



HEK293T cells were transfected with the pCMV6-ENTRY control (Cat# [PS100001], Left lane) or pCMV6-ENTRY USP25 (Cat# RC209755, Right lane) cDNA for 48 hrs and lysed. Equivalent amounts of cell lysates (5 ug per lane) were separated by SDS-PAGE and immunoblotted with anti-USP25 (Cat# [TA810971])(1:2000). Positive lysates [LY415616] (100ug) and [LC415616] (20ug) can be purchased separately from OriGene.



Western blot validation of overexpression lysate (Cat# [LY415616]) using anti-DDK antibody (Cat# [TA50011-100]). Left: Cell lysates from untransfected HEK293T cells; Right: Cell lysates from HEK293T cells transfected with RC209755 using transfection reagent MegaTran 2.0 (Cat# [TT210002]).



Coomassie blue staining of purified USP25 protein (Cat# [TP309755]). The protein was produced from HEK293T cells transfected with USP25 cDNA clone (Cat# RC209755) using MegaTran 2.0 (Cat# [TT210002]).