

## Product datasheet for **RC209754**

### TMED5 (NM\_016040) Human Tagged ORF Clone

#### Product data:

Product Type:	Expression Plasmids
Product Name:	TMED5 (NM_016040) Human Tagged ORF Clone
Tag:	Myc-DDK
Symbol:	TMED5
Synonyms:	CGI-100; p24g2; p28
Mammalian Cell Selection:	Neomycin
Vector:	pCMV6-Entry (PS100001)
E. coli Selection:	Kanamycin (25 ug/mL)
ORF Nucleotide Sequence:	>RC209754 ORF sequence Red=Cloning site Blue=ORF Green=Tags(s)

TTTTGTAATACGACTCACTATAGGGCGCCGGGAATTCGTCGACTGGATCCGGTACCGAGGAGATCTGCC  
GCC**CGATCGCC**

ATGGGCGACAAGATCTGGCTGCCCTTCCCGTGCTCCTTCTGGCCGCTCTGCCTCCGGTGCTGCTGCCTG  
GGGCGCCGGCTCACACCTTCCCTCGATAGCGACTTCACCTTTACCCTTCCGCGCCGAGAAAGGAGTG  
CTTCTACCAGCCCATGCCCTGAAGGCCTCGCTGGAGATCGAGTACCAAGTTTTAGATGGAGCAGGATTA  
GATATTGATTTCCATCTGCCTCTCCAGAAGGCAAACCTTAGTTTTGAACAAAGAAAATCAGATGGAG  
TTCACACTGTAGAGACTGAAGTTGGTGATTACATGTTCTGCTTTGACAATACATTCAGCACCATTCTGA  
GAAGGTGATTTCTTTGAATTAATCCTGGATAATATGGGAGAACAGGCACAAGAACAAGAAGATTGGAAG  
AAATATATTACTGGCACAGATATATTGGATATGAACTGGAAGACATCCTGGAATCCATCAACAGCATCA  
AGTCCAGACTAAGCAAAAGTGGGCACATACAAATCTGCTTAGAGCATTGAAGCTCGTATCGAAACAT  
ACAAGAAAGCAACTTTGATAGAGTCAATTTCTGGTCTATGGTTAATTTAGTGGTCATGGTGGTGTCA  
GCCATTCAAGTTTATATGCTGAAGAGTCTGTTGAAGATAAGAGGAAAAGTAGAACT

**ACGCGT**ACGCGGCGCTCGAGCAGAACTCATCTCAGAAGAGGATCTGGCAGCAATGATATCCTGGATT  
ACAAGGATGACGACGATAAGGTTTAA



[View online »](#)

**Protein Sequence:** >RC209754 protein sequence  
Red=Cloning site Green=Tags(s)

MGDKIWLPPFVLLLAALPPVLLPGAAGFTPSLSDSDFFTFLPAGQKECFYQPMLKASLEIEYQVLDGAGL  
 DIDFHLASPEGKTLVFEQRKSDGVHTVETEVDYMFCDNTFSTISEKVIFFELILDNMGEQAQEEDWK  
 KYITGTDILDMKLEDILESINSIKSRLSKSGHIQILLRAFEARDRNIQESNFDRVNFWSMVNLVMMVVVS  
 AIQVYMLKSLFEDKRSRT

TRTRPLEQKLISEEDLAANDILDYKDDDDKV

**Restriction Sites:** SgfI-MluI

**Cloning Scheme:**

Cloning sites used for ORF Shuttling:



\* The last codon before the Stop codon of the ORF

**ACCN:** NM\_016040

**ORF Size:** 687 bp

**OTI Disclaimer:** The molecular sequence of this clone aligns with the gene accession number as a point of reference only. However, individual transcript sequences of the same gene can differ through naturally occurring variations (e.g. polymorphisms), each with its own valid existence. This clone is substantially in agreement with the reference, but a complete review of all prevailing variants is recommended prior to use. [More info](#)

**OTI Annotation:** This clone was engineered to express the complete ORF with an expression tag. Expression varies depending on the nature of the gene.

**Components:** The ORF clone is ion-exchange column purified and shipped in a 2D barcoded Matrix tube containing 10ug of transfection-ready, dried plasmid DNA (reconstitute with 100 ul of water).

**Reconstitution Method:**

1. Centrifuge at 5,000xg for 5min.
2. Carefully open the tube and add 100ul of sterile water to dissolve the DNA.
3. Close the tube and incubate for 10 minutes at room temperature.
4. Briefly vortex the tube and then do a quick spin (less than 5000xg) to concentrate the liquid at the bottom.
5. Store the suspended plasmid at -20°C. The DNA is stable for at least one year from date of shipping when stored at -20°C.

**RefSeq:** [NM\\_016040.3](#), [NP\\_057124.2](#)

**RefSeq Size:** 6083 bp

**RefSeq ORF:** 690 bp

**Locus ID:** 50999

**UniProt ID:** [Q9Y3A6](#)

**Cytogenetics:** 1p22.1

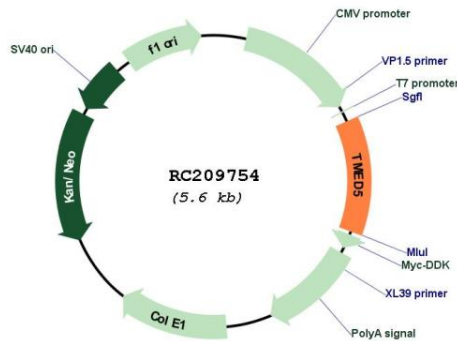
**Domains:** EMP24\_GP25L

**Protein Families:** Transmembrane

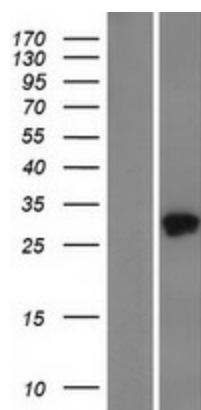
**MW:** 26 kDa

**Gene Summary:** Potential role in vesicular protein trafficking, mainly in the early secretory pathway. Required for the maintenance of the Golgi apparatus; involved in protein exchange between Golgi stacks during assembly. Probably not required for COPI-vesicle-mediated retrograde transport.[UniProtKB/Swiss-Prot Function]

**Product images:**



Circular map for RC209754



Western blot validation of overexpression lysate (Cat# [LY414236]) using anti-DDK antibody (Cat# [TA50011-100]). Left: Cell lysates from untransfected HEK293T cells; Right: Cell lysates from HEK293T cells transfected with RC209754 using transfection reagent MegaTran 2.0 (Cat# [TT210002]).