

Product datasheet for RC209753

WDR55 (NM_017706) Human Tagged ORF Clone

Product data:

Product Type:	Expression Plasmids
Product Name:	WDR55 (NM_017706) Human Tagged ORF Clone
Tag:	Myc-DDK
Symbol:	WDR55
Mammalian Cell Selection:	Neomycin
Vector:	pCMV6-Entry (PS100001)
E. coli Selection:	Kanamycin (25 ug/mL)
ORF Nucleotide Sequence:	>RC209753 ORF sequence Red=Cloning site Blue=ORF Green=Tags(s)

TTTTGTAATACGACTCACTATAGGGCGGCCGGAATTCGTCGACTGGATCCGGTACCGAGGAGATCTGCC
GCC**CGATCGCC**

ATGGACCGCACTTGTGAGGAGAGGCCCGCTGAGGATGGGAGCGACGAGGAGGCCAGACTCCATGGAAG
CCCCAACCCGGATCCGGGACACTCCGGAAGACATCGTGTGGAAGCTCCGGCTAGTGGGCTGGCGTTCCA
TCCGGCCCGTGACCTACTGGCTGCAGGGGACGTGGACGGGACGTGTTTCGCTTTTCTACTCTTGCCAA
GAGGGAGAAACCAAGGAGCTCTGGTCATCAGGTCACCATCTCAAGGCCTGCCGAGCTGTGGCCTTCTCTG
AAGATGGGCAGAAGCTCATTACTGTCTCCAAGGACAAAGCCATCCATGTTCTAGATGTGGAGCAGGGCCA
ACTGAAAAGACGTGTTTCCAAGGCTCATGGTGCCCCATCAACAGTCTTCTGCTGGTGGATGAGAATGTT
CTGGCCACTGGGATGACACAGGTGGTATCCGTCTCTGGACCAGCGAAAGGAGGCCCTTAATGGATA
TGAGGCAACATGAAGAGTACATCGCAGACATGGCTCTGGATCCAGCCAAAAGCTGCTGCTGACAGCCAG
CGGGATGGCTGCCTTGGCATCTTCAACATTAAGAGGCGTCGGTTTGGCTGCTCTCAGAACCTCAGTCT
GGGACCTGACCTCTGCACTCTCATGAAATGGGGGAAGAAGGTAGCCTGTGGCTCCAGTGAAGTACCA
TCTACCTTTCAATTGGAATGGCTTTGGGGCCACAAGTGACCGCTTTGCCCTGAGAGCTGAATCTATCGA
CTGCATGGTTCCAGTCACCGAGAGTCTGCTGTGTACTGGCTCCACTGATGGAGTCATCAGGGCTGTGAAC
ATCCTACCGAACCGAGTGGTGGCAGTGTGGGCCAGCACACTGGGAGCCTGTGGAGGAGCTGGCCCTCT
CCCACTGTGGCCGCTTCCCTGGCCAGTAGTGCCATGACCAGCGCCTCAAGTTTTGGGACATGGCCAGCT
GCGAGCTGTGGTGGTGGATGACTACCGTCGGCGCAAAAAAAGGGAGGACCAGTGGGGCTCTGAGCAGC
AAGACTTGGAGCACCGATGACTTCTTCGCAAGGACTGAGGGAAGAGGGAGAAGACTCCATGGCTCAGGAAG
AAAAGGAGGAGACTGGGGATGACAGTGAC

ACGCGTACGCGGCCGCTCGAGCAGAACTCATCTCAGAAGAGGATCTGGCAGCAAATGATATCCTGGATT
ACAAGGATGACGACGATAAGGTTTAA



[View online »](#)

Protein Sequence: >RC209753 protein sequence
Red=Cloning site Green=Tags(s)

MDRTCEERPAEDGSDEEDPDSMEAPTRIRDTPEDIVLEAPASGLAFHPARDLLAAGDVDGDVVFVFSYSCQ
 EGETKELWSSGGHLLKACRAVAFSEDGQKLITVSKDKAIHVLVDVEQGQLERRVSKAHGAPINSLLLVDENV
 LATGDDTGGIRLWDQRKEGPLMDMRQHEEYIADMALDPAKLLLTASGDGCLGIFNIKRRRFFELLSEPQS
 GDLTSTVTLMKWGGKVVACGSSEGTIYLFNWNFGATSDRFALRAESIDCMVPVTESELLCTGSTDGVIRAVN
 ILPNRVVGSVQGHTGEPVEELALSHCGRFLASSGHDQRLKFDMAQLRAVVVDDYRRRKKKGGPLRALSS
 KTWSTDDFFAGLREEGEDSMAQEKEETGDDSD

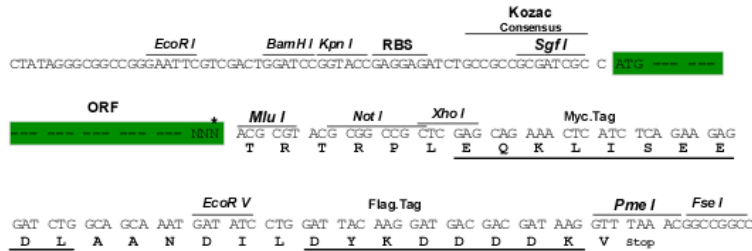
TRTRPLEQKLISEEDLAANDILDYKDDDDKV

Chromatograms: https://cdn.origene.com/chromatograms/mk6364_h07.zip

Restriction Sites: SgfI-MluI

Cloning Scheme:

Cloning sites used for ORF Shuttling:



* The last codon before the Stop codon of the ORF

ACCN: NM_017706

ORF Size: 1149 bp

OTI Disclaimer: The molecular sequence of this clone aligns with the gene accession number as a point of reference only. However, individual transcript sequences of the same gene can differ through naturally occurring variations (e.g. polymorphisms), each with its own valid existence. This clone is substantially in agreement with the reference, but a complete review of all prevailing variants is recommended prior to use. [More info](#)

OTI Annotation: This clone was engineered to express the complete ORF with an expression tag. Expression varies depending on the nature of the gene.

Components: The ORF clone is ion-exchange column purified and shipped in a 2D barcoded Matrix tube containing 10ug of transfection-ready, dried plasmid DNA (reconstitute with 100 ul of water).

Reconstitution Method:

1. Centrifuge at 5,000xg for 5min.
2. Carefully open the tube and add 100ul of sterile water to dissolve the DNA.
3. Close the tube and incubate for 10 minutes at room temperature.
4. Briefly vortex the tube and then do a quick spin (less than 5000xg) to concentrate the liquid at the bottom.
5. Store the suspended plasmid at -20°C. The DNA is stable for at least one year from date of shipping when stored at -20°C.

RefSeq: [NM_017706.4](#)

RefSeq Size: 2580 bp

RefSeq ORF: 1152 bp

Locus ID: 54853

UniProt ID: [Q9H6Y2](#)

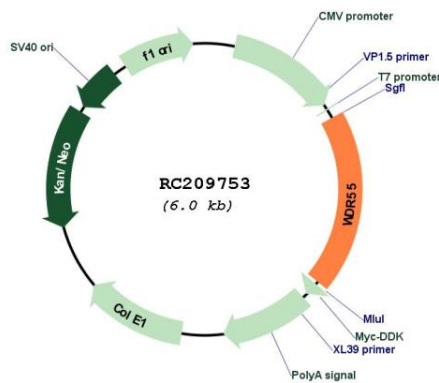
Cytogenetics: 5q31.3

Domains: WD40

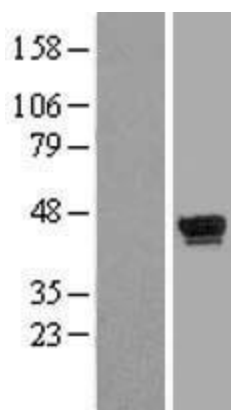
MW: 42.1 kDa

Gene Summary: Nucleolar protein that acts as a modulator of rRNA synthesis. Plays a central role during organogenesis (By similarity).[UniProtKB/Swiss-Prot Function]

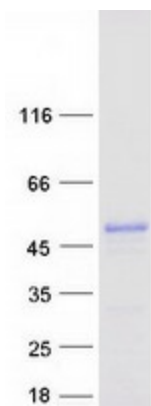
Product images:



Circular map for RC209753



Western blot validation of overexpression lysate (Cat# [LY413614]) using anti-DDK antibody (Cat# [TA50011-100]). Left: Cell lysates from untransfected HEK293T cells; Right: Cell lysates from HEK293T cells transfected with RC209753 using transfection reagent MegaTran 2.0 (Cat# [TT210002]).



Coomassie blue staining of purified WDR55 protein (Cat# [TP309753]). The protein was produced from HEK293T cells transfected with WDR55 cDNA clone (Cat# RC209753) using MegaTran 2.0 (Cat# [TT210002]).