

Product datasheet for RC209747

SPTSSA (NM_138288) Human Tagged ORF Clone

Product data:

Product Type: Expression Plasmids
 Product Name: SPTSSA (NM_138288) Human Tagged ORF Clone
 Tag: Myc-DDK
 Symbol: SPTSSA
 Synonyms: C14orf147; SSSPTA
 Mammalian Cell Selection: Neomycin
 Vector: pCMV6-Entry (PS100001)
 E. coli Selection: Kanamycin (25 ug/mL)
 ORF Nucleotide Sequence: >RC209747 ORF sequence
 Red=Cloning site Blue=ORF Green=Tags(s)

TTTTGTAATACGACTCACTATAGGGCGGCCGGAATTCGTCGACTGGATCCGGTACCGAGGAGATCTGCC
 GCC**CGATCGCC**

ATGGCGCTGGCGGGCCTGGAAGCAGATGTCCTGGTTCTACTACCAGTACCTGCTGGTCACGGCGCTCT
 ACATGCTGGAGCCCTGGGAGCGGACGGTGTCAATCCATGCTGGTTCCATTGTGGGGATGGCACTATA
 CACAGGATACGTCTTCATGCCCCAGCACATCATGGCGATATTGCACTACTTTGAAATCGTACAA

ACGCGTACGCGGCCGCTCGAGCAGAACTCATCTCAGAAGAGGATCTGGCAGCAAATGATATCCTGGATT
 ACAAGGATGACGACGATAAGGTTTAA

Protein Sequence: >RC209747 protein sequence
 Red=Cloning site Green=Tags(s)

MALARAWQMSWFYYQYLLVTALYMLEPWERTVFNSMLVSIVGMALYTGYYVMPQHIMAILHYFEIVQ

TRTRPLEQKLISEEDLAANDILDYKDDDDKV

Chromatograms: https://cdn.origene.com/chromatograms/mk6359_h01.zip

Restriction Sites: Sgfl-MluI



[View online »](#)

Cloning Scheme:



ACCN: NM_138288

ORF Size: 204 bp

OTI Disclaimer: The molecular sequence of this clone aligns with the gene accession number as a point of reference only. However, individual transcript sequences of the same gene can differ through naturally occurring variations (e.g. polymorphisms), each with its own valid existence. This clone is substantially in agreement with the reference, but a complete review of all prevailing variants is recommended prior to use. [More info](#)

OTI Annotation: This clone was engineered to express the complete ORF with an expression tag. Expression varies depending on the nature of the gene.

Components: The ORF clone is ion-exchange column purified and shipped in a 2D barcoded Matrix tube containing 10ug of transfection-ready, dried plasmid DNA (reconstitute with 100 ul of water).

- Reconstitution Method:
1. Centrifuge at 5,000xg for 5min.
 2. Carefully open the tube and add 100ul of sterile water to dissolve the DNA.
 3. Close the tube and incubate for 10 minutes at room temperature.
 4. Briefly vortex the tube and then do a quick spin (less than 5000xg) to concentrate the liquid at the bottom.
 5. Store the suspended plasmid at -20°C. The DNA is stable for at least one year from date of shipping when stored at -20°C.

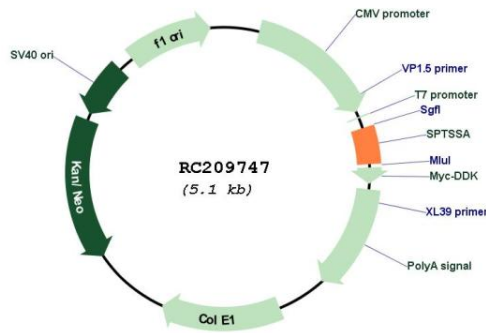
RefSeq: [NM_138288.2](#), [NP_612145.1](#)

RefSeq Size: 2538 bp

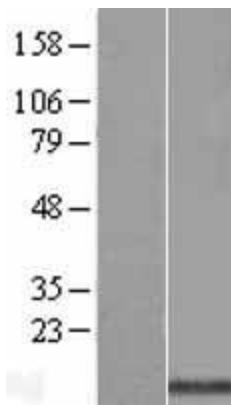
RefSeq ORF: 216 bp

Locus ID: 171546
UniProt ID: [Q969W0](#)
Cytogenetics: 14q13.1
Protein Families: Transmembrane
MW: 8.2 kDa
Gene Summary: Serine palmitoyltransferase (SPT; EC 2.3.1.50) catalyzes the first committed and rate-limiting step in sphingolipid biosynthesis. SSSPTA is a small SPT subunit that stimulates SPT activity and confers acyl-CoA preference to the SPT catalytic heterodimer of SPTLC1 (MIM 605712) and either SPTLC2 (MIM 605713) or SPTLC3 (MIM 611120) (Han et al., 2009 [PubMed 19416851]).[supplied by OMIM, Nov 2010]

Product images:



Circular map for RC209747



Western blot validation of overexpression lysate (Cat# [LY408622]) using anti-DDK antibody (Cat# [TA50011-100]). Left: Cell lysates from untransfected HEK293T cells; Right: Cell lysates from HEK293T cells transfected with RC209747 using transfection reagent MegaTran 2.0 (Cat# [TT210002]).