

Product datasheet for **RC209738**

Galectin 13 (LGALS13) (NM_013268) Human Tagged ORF Clone

Product data:

Product Type: Expression Plasmids
Product Name: Galectin 13 (LGALS13) (NM_013268) Human Tagged ORF Clone
Tag: Myc-DDK
Symbol: Galectin 13
Synonyms: GAL13; PLAC8; PP13
Mammalian Cell Selection: Neomycin
Vector: pCMV6-Entry (PS100001)
E. coli Selection: Kanamycin (25 ug/mL)
ORF Nucleotide Sequence: >RC209738 ORF sequence
 Red=Cloning site Blue=ORF Green=Tags(s)

TTTTGTAATACGACTCACTATAGGGCGGCCGGAATTCGTCGACTGGATCCGGTACCGAGGAGATCTGCC
 GCC**CGATCGCC**

ATGTCCTCTTTACCCGTGCCATACAAACTGCCTGTGTCTTTGTCTGTTGGTTCTGCGTGATAATCAAAG
 GGACACCAATCCACTCTTTTATCAATGACCCACAGCTGCAGGTGGATTTCTACACTGACATGGATGAGGA
 TTCAGATATTGCCTTCCGTTTCCGAGTGCACTTTGGCAATCATGTGGTCATGAACAGGCGTGAGTTGGG
 ATATGGATGTTGGAGGAGACAACAGACTACGTGCCCTTTGAGGATGGCAAACAATTTGAGCTGTGCATCT
 ACGTACATTACAATGAGTATGAGATAAAGGTCAATGGCATAACGATTTACGGCTTTGTCCATCGAATCCC
 GCCATCATTTGTGAAGATGGTGAAGTGTGAGAGATATCTCCCTGACCTCAGTGTGTCTGCAAT

ACGCGTACGCGGCCGCTCGAGCAGAAACTCATCTCAGAAGAGGATCTGGCAGCAAATGATATCCTGGATT
 ACAAGGATGACGACGATAAGGTTTAA

Protein Sequence: >RC209738 protein sequence
 Red=Cloning site Green=Tags(s)

MSSLPVPYKLPVSLSVGSCVVIKGTPIHSFINDPQLQVDFYTDMEDESDIAFRFRVHFGNHVVMNRREFG
 IWMLEETDYVPFEDGKQFELCIYVHYNEYEIKVNGIRIYGFVHRIPPSFVKMVQVSRDISLTSVCVN

TRTRPLEQKLISEEDLAANDILDYKDDDDKV

Chromatograms: https://cdn.origene.com/chromatograms/mk6364_a05.zip

Restriction Sites: SgfI-MluI



[View online »](#)

Cloning Scheme:


ACCN: NM_013268

ORF Size: 417 bp

OTI Disclaimer: The molecular sequence of this clone aligns with the gene accession number as a point of reference only. However, individual transcript sequences of the same gene can differ through naturally occurring variations (e.g. polymorphisms), each with its own valid existence. This clone is substantially in agreement with the reference, but a complete review of all prevailing variants is recommended prior to use. [More info](#)

OTI Annotation: This clone was engineered to express the complete ORF with an expression tag. Expression varies depending on the nature of the gene.

Components: The ORF clone is ion-exchange column purified and shipped in a 2D barcoded Matrix tube containing 10ug of transfection-ready, dried plasmid DNA (reconstitute with 100 ul of water).

Reconstitution Method:

1. Centrifuge at 5,000xg for 5min.
2. Carefully open the tube and add 100ul of sterile water to dissolve the DNA.
3. Close the tube and incubate for 10 minutes at room temperature.
4. Briefly vortex the tube and then do a quick spin (less than 5000xg) to concentrate the liquid at the bottom.
5. Store the suspended plasmid at -20°C. The DNA is stable for at least one year from date of shipping when stored at -20°C.

RefSeq: [NM_013268.3](#)

RefSeq Size: 610 bp

RefSeq ORF: 420 bp

Locus ID: 29124

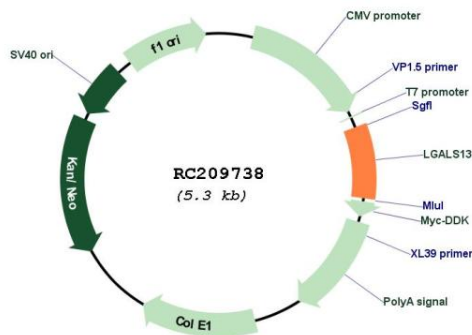
UniProt ID: [Q9UHV8](#)

Cytogenetics: 19q13.2

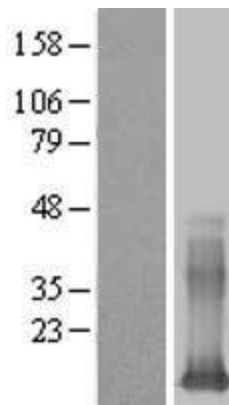
MW: 16.1 kDa

Gene Summary: Lysophospholipases are enzymes that act on biological membranes to regulate the multifunctional lysophospholipids. The protein encoded by this gene has lysophospholipase activity. It is composed of two identical subunits which are held together by disulfide bonds. This protein has structural similarity to several members of the beta-galactoside-binding S-type lectin family. [provided by RefSeq, Jul 2008]

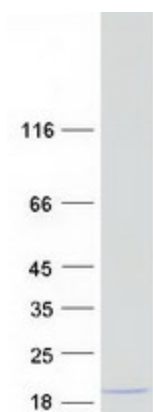
Product images:



Circular map for RC209738



Western blot validation of overexpression lysate (Cat# [LY415702]) using anti-DDK antibody (Cat# [TA50011-100]). Left: Cell lysates from untransfected HEK293T cells; Right: Cell lysates from HEK293T cells transfected with RC209738 using transfection reagent MegaTran 2.0 (Cat# [TT210002]).



Coomassie blue staining of purified LGALS13 protein (Cat# [TP309738]). The protein was produced from HEK293T cells transfected with LGALS13 cDNA clone (Cat# RC209738) using MegaTran 2.0 (Cat# [TT210002]).