

Product datasheet for **RC209733**

BMF (NM_001003940) Human Tagged ORF Clone

Product data:

Product Type: Expression Plasmids
 Product Name: BMF (NM_001003940) Human Tagged ORF Clone
 Tag: Myc-DDK
 Symbol: BMF
 Mammalian Cell Selection: Neomycin
 Vector: pCMV6-Entry (PS100001)
 E. coli Selection: Kanamycin (25 ug/mL)
 ORF Nucleotide Sequence: >RC209733 ORF sequence
 Red=Cloning site Blue=ORF Green=Tags(s)

TTTTGTAATACGACTCACTATAGGGCGGCCGGAATTCGTCGACTGGATCCGGTACCGAGGAGATCTGCC
 GCC**CGATCGCC**

ATGGAGCCATCTCAGTGTGTGGAGGAGCTGGAGGATGATGTGTTCCAACCAGAGGATGGGGAGCCGGTGA
 CCCAACCCGGGAGCTTGCTCTGCTGACCTGTTTGCCAGAGCCTACTGGACTGCCCCCTCAGCCGACT
 TCAGCTCTTCCCTCTCACCCACTGCTGTGGCCCTGGCCTTCGACCCACCAGCCAGGAAGACAAAGCTACC
 CAGACTCTCAGCCAGCCTCCCCAGCCAAGGTGTCATGCTGCCTGTGGGTGACTGAGGAACCCAGC
 GACTCTTTATGGCAATGCTGGCTATCGGCTTCCCTCCTGCCAGTTTCCAGCAGCTTGGCCATTGG
 GGAGCAGCCCCCGAAGGGCAGTGGCAACATCAAGCAGAGGTACAGATTGCCCGAAAGCTTCAGTGCATT
 GCAGACCAGTTCCACCGCTTATGTGCAGCAACACCAGCAGAACCAAAATCGTGTGTGGTGGCAGATCC
 TCCTCTTCTGCACAACCTTGCTTTGAATGGAGAAGAGAACAGGAACGGGGCAGGCCCTAGG

ACGCGTACGCGGCCGCTCGAGCAGAACTCATCTCAGAAGAGGATCTGGCAGCAATGATATCCTGGATT
 ACAAGGATGACGACGATAAGGTTTAA

Protein Sequence: >RC209733 protein sequence
 Red=Cloning site Green=Tags(s)

MEPSQCVEELEDVDFQPEDGEPVTQPGSLLSADLFAQSLLDCPLSRLQLFPLTHCCGGLRPTSQEDKAT
 QTLSPASPSQGVMLPCGVTEEPQRLFYGNAGYRLPLPASFPVLPVIGEQPPEQWQHQAQEVQIARKLQCI
 ADQFHRLHVQHQQNQRVWVWQILLFLHNLALNGEENRNGAGPR

TRTRPLEQKLISEEDLAANDILDYKDDDDKV

Chromatograms: https://cdn.origene.com/chromatograms/mk6268_e12.zip

Restriction Sites: Sgfl-Mlul



[View online »](#)

Cloning Scheme:


ACCN: NM_001003940

ORF Size: 552 bp

OTI Disclaimer: The molecular sequence of this clone aligns with the gene accession number as a point of reference only. However, individual transcript sequences of the same gene can differ through naturally occurring variations (e.g. polymorphisms), each with its own valid existence. This clone is substantially in agreement with the reference, but a complete review of all prevailing variants is recommended prior to use. [More info](#)

OTI Annotation: This clone was engineered to express the complete ORF with an expression tag. Expression varies depending on the nature of the gene.

Components: The ORF clone is ion-exchange column purified and shipped in a 2D barcoded Matrix tube containing 10ug of transfection-ready, dried plasmid DNA (reconstitute with 100 ul of water).

Reconstitution Method:

1. Centrifuge at 5,000xg for 5min.
2. Carefully open the tube and add 100ul of sterile water to dissolve the DNA.
3. Close the tube and incubate for 10 minutes at room temperature.
4. Briefly vortex the tube and then do a quick spin (less than 5000xg) to concentrate the liquid at the bottom.
5. Store the suspended plasmid at -20°C. The DNA is stable for at least one year from date of shipping when stored at -20°C.

RefSeq: [NM_001003940.2](#)

RefSeq Size: 4700 bp

RefSeq ORF: 555 bp

Locus ID: 90427

UniProt ID: [Q96LC9](#)

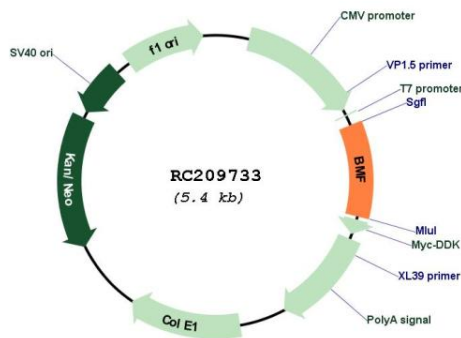
Cytogenetics: 15q15.1

Protein Families: Druggable Genome

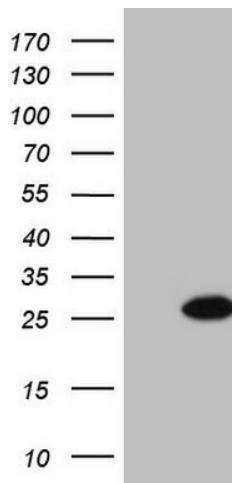
MW: 20.5 kDa

Gene Summary: The protein encoded by this gene belongs to the BCL2 protein family. BCL2 family members form hetero- or homodimers and act as anti- or pro-apoptotic regulators that are involved in a wide variety of cellular activities. This protein contains a single BCL2 homology domain 3 (BH3), and has been shown to bind BCL2 proteins and function as an apoptotic activator. This protein is found to be sequestered to myosin V motors by its association with dynein light chain 2, which may be important for sensing intracellular damage and triggering apoptosis. Alternatively spliced transcript variants encoding different isoforms have been identified. [provided by RefSeq, Jul 2008]

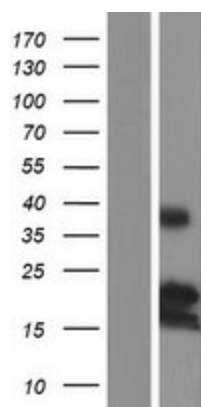
Product images:



Circular map for RC209733



HEK293T cells were transfected with the pCMV6-ENTRY control (Cat# [PS100001], Left lane) or pCMV6-ENTRY BMF (Cat# RC209733, Right lane) cDNA for 48 hrs and lysed. Equivalent amounts of cell lysates (5 ug per lane) were separated by SDS-PAGE and immunoblotted with anti-BMF (Cat# [TA807461])(1:2000). Positive lysates [LY424040] (100ug) and [LC424040] (20ug) can be purchased separately from OriGene.



Western blot validation of overexpression lysate (Cat# [LY424040]) using anti-DDK antibody (Cat# [TA50011-100]). Left: Cell lysates from untransfected HEK293T cells; Right: Cell lysates from HEK293T cells transfected with RC209733 using transfection reagent MegaTran 2.0 (Cat# [TT210002]).