

Product datasheet for RC209716

VPS37A (NM_152415) Human Tagged ORF Clone

Product data:

Product Type: Expression Plasmids
 Product Name: VPS37A (NM_152415) Human Tagged ORF Clone
 Tag: Myc-DDK
 Symbol: VPS37A
 Synonyms: HCRP1; PQBP2; SPG53
 Mammalian Cell Selection: Neomycin
 Vector: pCMV6-Entry (PS100001)
 E. coli Selection: Kanamycin (25 ug/mL)
 ORF Nucleotide Sequence: >RC209716 ORF sequence
 Red=Cloning site Blue=ORF Green=Tags(s)

TTTTGTAATACGACTCACTATAGGGCGGCCGGAATTCGTCGACTGGATCCGGTACCGAGGAGATCTGCC
 GCC**CGCATCGCC**

ATGAGCTGGCTTTTTCCCTGACCAAGAGCGCCTCCTCCTCCGCGGCTGGGTCCCCGGTGGCCTCACCA
 GCCTCCAGCAGCAGAAGCAGCGCCTGATCGAGTCCCTCCGGAACCTCACACTCCAGTATAGCCGAAATACA
 GAAAGATGTGGAATACAGATTGCCATTCACCATAAACACCTGACAATTAACATTAATACTGCTTCT
 CCACAGTTTCTCAGGAAAAACCAGTGATCAGTGTTCATCCACCAATACGACATCACTTAATGGATAAAC
 AAGGAGTGTATGTACCTCTCCATTAGTAAACAATTTTACAATGCACTCAGATCTTGAAAAATTATTCA
 GAGTCTGTTGGATGAGTTTTGGAAGAATCCTCCAGTTTTAGCTCCTACTTCAACAGCATTTCCTTATCTA
 TACAGTAACCCAAGTGGGATGTCTCCTTATGCTTCTCAGGGTTTTCCATTTCTTCTCCATATCCTCCAC
 AAGAAGCAAACAGGAGTATCACTTCTTTATCTGTTGCTGACACTGTTTCTTCAACAACAAGTCATAC
 CACAGCCAAGCCTGCCGCTCCTTCATTTGGTGTCTTTCAAATCTGCCATTACCCATTCCCACAGTGGAT
 GCTTCAATACCGACAAGCCAAAATGTTTTGGGTACAAGATGCCAGATGTCCCTGATGCATTTCCAGAAC
 TCTCAGAACTAAGTGTGCACAACCTCACAGATATGAATGAACAAGAGGAGGTATTACTAGAACAGTTTCT
 GACTTTGCCTCACTAAAACAAATATTACCGACAAGATGACTTAGTAAAAAGTATTGAGGAACAGCA
 AGAAAAAATCTCCTTTTGGAGCCAGCTTGAAGCCAAAAGACAACTGTTTTAGATAAGTATGAATTAC
 TTACACAGATGAAGTCCACTTTTCGAAAAGAAGATGCAAAGGCAGCATGAACTTAGTGAGATCTGTAGTGC
 AAGTGCCTTTCAGGCAAGATTGAAAAGTAGCTGCACATGAAGCTGAGGAAGAATCTGATAATATTGCAGAA
 GATTTCTTGGAGGAAAGATGGAATAGATGATTTTCTCAGTAGCTTCATGGAAAAGAGAACAATTTGCC
 ACTGTAGAAGAGCCAAGGAAGAGAACTTCAGCAGGCGATAGCAATGCACAGCCAATTTTCATGCTCCACT
 A

ACGCGTACGCGGCCGCTCGAGCAGAACTCATCTCAGAAGAGGATCTGGCAGCAAATGATATCCTGGATT
 ACAAGGATGACGACGATAAGGTTTAA



Protein Sequence: >RC209716 protein sequence
Red=Cloning site Green=Tags(s)

MSWLFPLTKSASSAAGSPGGLTSLQQKQRLIESLRNSHSSIAEIQKDVEYRLPFTINNL TININILLP
 PQFPQEKPVISVYPIRHHMLDKQGVYVTSPLVNNFTMHSDLGKIIQSLLEDFWKNPPVLAPTSTAFFYL
 YSNPSGMSPYASQGFPLPPYPPQEANRSITSLVADTVSSSTTSHTTAKPAAPSFGLVSNLPLPIPTVD
 ASIPTSQNGFGYKMPDVPDAFPELSELVSVQLTDMNEQEEVLLLEQFLTLPLKQIITDKDDLKVSIEELA
 RKNLLLEPSLEAKRQTVLDKYELLTQMKSTFEKKMQRQHELSEICASALQARLKVAHEAEEESDNI
 AEFLEGMEIDDFLSSFMKRTICHCRRAKEEKLQQAIAMHSQFHAPL

TRTRPLEQKLISEEDLAANDILDYKDDDDKV

Chromatograms: https://cdn.origene.com/chromatograms/mk6727_d03.zip

Restriction Sites: SgfI-MluI

Cloning Scheme:



ACCN: NM_152415

ORF Size: 1191 bp

OTI Disclaimer: The molecular sequence of this clone aligns with the gene accession number as a point of reference only. However, individual transcript sequences of the same gene can differ through naturally occurring variations (e.g. polymorphisms), each with its own valid existence. This clone is substantially in agreement with the reference, but a complete review of all prevailing variants is recommended prior to use. [More info](#)

OTI Annotation: This clone was engineered to express the complete ORF with an expression tag. Expression varies depending on the nature of the gene.

Components: The ORF clone is ion-exchange column purified and shipped in a 2D barcoded Matrix tube containing 10ug of transfection-ready, dried plasmid DNA (reconstitute with 100 ul of water).

Reconstitution Method:

1. Centrifuge at 5,000xg for 5min.
2. Carefully open the tube and add 100ul of sterile water to dissolve the DNA.
3. Close the tube and incubate for 10 minutes at room temperature.
4. Briefly vortex the tube and then do a quick spin (less than 5000xg) to concentrate the liquid at the bottom.
5. Store the suspended plasmid at -20°C. The DNA is stable for at least one year from date of shipping when stored at -20°C.

Note: Plasmids are not sterile. For experiments where strict sterility is required, filtration with 0.22um filter is required.

RefSeq: [NM_152415.3](#)

RefSeq Size: 4585 bp

RefSeq ORF: 1194 bp

Locus ID: 137492

UniProt ID: [Q8NEZ2](#)

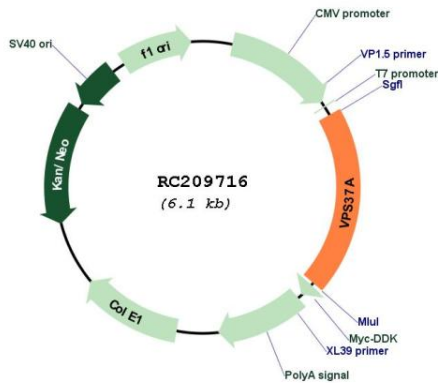
Cytogenetics: 8p22

Protein Pathways: Endocytosis

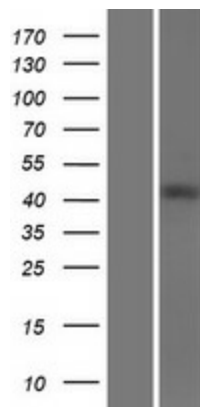
MW: 44.3 kDa

Gene Summary: This gene belongs to the VPS37 family, and encodes a component of the ESCRT-I (endosomal sorting complex required for transport I) protein complex, required for the sorting of ubiquitinated transmembrane proteins into internal vesicles of multivesicular bodies. Expression of this gene is downregulated in hepatocellular carcinoma, and mutations in this gene are associated with autosomal recessive spastic paraplegia-53. A related pseudogene has been identified on chromosome 5. Alternatively spliced transcript variants have been found for this gene. [provided by RefSeq, Dec 2012]

Product images:



Circular map for RC209716



Western blot validation of overexpression lysate (Cat# [LY407583]) using anti-DDK antibody (Cat# [TA50011-100]). Left: Cell lysates from untransfected HEK293T cells; Right: Cell lysates from HEK293T cells transfected with RC209716 using transfection reagent MegaTran 2.0 (Cat# [TT210002]).