

## Product datasheet for RC209709

### CLEC1 (CLEC1A) (NM\_016511) Human Tagged ORF Clone

#### Product data:

Product Type:	Expression Plasmids
Product Name:	CLEC1 (CLEC1A) (NM_016511) Human Tagged ORF Clone
Tag:	Myc-DDK
Symbol:	CLEC1
Synonyms:	CLEC-1; CLEC1
Mammalian Cell Selection:	Neomycin
Vector:	pCMV6-Entry (PS100001)
E. coli Selection:	Kanamycin (25 ug/mL)
ORF Nucleotide Sequence:	>RC209709 ORF sequence Red=Cloning site Blue=ORF Green=Tags(s)

TTTTGTAATACGACTCACTATAGGGCGGCCGGAATTCGTCGACTGGATCCGGTACCGAGGAGATCTGCC  
GCC**CGGATCGCC**

ATGCAGGCCAAGTACAGCAGCACGAGGGACATGCTGGATGATGATGGGGACACCACCATGAGCCTGCATT  
CTCAAGCCTCTGCCACAACCTCGGCATCCAGAGCCCCGGCGCACAGAGCACAGGGCTCCCTCTTCAACGTG  
GCGACCAGTGGCCCTGACCCTGCTGACTTTGTGCTTGGTCTGCTGATAGGGCTGGCAGCCCTGGGGCTT  
TTGTTTTTTCAGTACTACCAGCTCTCCAATACTGGTCAAGACACCATTTCTCAAATGGAAGAAAGATTAG  
GAAATACGTCCCAAGAGTTGCAATCTCTCAAGTCCAGAATATAAAGCTTGCAGGAAGTCTGCAGCATGT  
GGCTGAAAAACTCTGTCGTGAGCTGTATAACAAAGCTGGAGCACACAGGTGCAGCCCTTGTACAGAACAA  
TGGAAATGGCATGGAGACAATTGCTACCAGTCTATAAAGACAGCAAAAGTTGGGAGGACTGTAATATT  
TCTGCCTTAGTAAAACTCTACCATGCTGAAGATAAACAACAAGAAGACCTGGAATTTGCCGCTCTCA  
GAGTACTCTGAGTTTTTCTACTCTATTGGACAGGGCTTTTGCGCCCTGACAGTGGCAAGGCCTGGCTG  
TGGATGGATGGAACCCCTTCACTTCTGAACTGTTCCATATTATAATAGATGTCACCAGCCCAAGAAGCA  
GAGACTGTGTGGCCATCCTTAATGGGATGATCTTCTCAAAGGACTGCAAAGAATTGAAGCGTTGTGTCTG  
TGAGAGAAGGGCAGGAATGGTGAAGCCAGAGAGCTCCATGTCCCCCTGAAACATTAGGCGAAGGTGAC

**ACGCGT**ACGCGGCCGCTCGAGCAGAAACTCATCTCAGAAGAGGATCTGGCAGCAAATGATATCCTGGATT  
ACAAGGATGACGACGATAAGGTTTAA



[View online »](#)

**Protein Sequence:** >RC209709 protein sequence  
Red=Cloning site Green=Tags(s)

MQAKYSSTRDMLDDGDTTMSLHSQASATTRHPEPRRTEHRAPSSTWRPVALTLLTLCLVLLIGLAALGL  
 LFFQYYQLSNTGQDTISQMEERLGNTSQELQSLQVQNIKLAGSLQHVAEKLCRELYNKAGAHRCSPCTEQ  
 WKWHGDNCYQFYKDSKSWEDCKYFCLSENSTMLKINKQEDLEFAASQSYSEFFYSYWTGLLRPDSGKAWL  
 WMDGTPFTSELFHIIIDVTSRSDCAVAILNGMIFSKDCKELKRCVCERRAGMVKPESLHVPPETLGEDG

TRTRPLEQKLISEEDLAANDILDYKDDDDKV

**Chromatograms:** [https://cdn.origene.com/chromatograms/mk6364\\_e05.zip](https://cdn.origene.com/chromatograms/mk6364_e05.zip)

**Restriction Sites:** SgfI-MluI

**Cloning Scheme:**



**ACCN:** NM\_016511

**ORF Size:** 840 bp

**OTI Disclaimer:** The molecular sequence of this clone aligns with the gene accession number as a point of reference only. However, individual transcript sequences of the same gene can differ through naturally occurring variations (e.g. polymorphisms), each with its own valid existence. This clone is substantially in agreement with the reference, but a complete review of all prevailing variants is recommended prior to use. [More info](#)

**OTI Annotation:** This clone was engineered to express the complete ORF with an expression tag. Expression varies depending on the nature of the gene.

**Components:** The ORF clone is ion-exchange column purified and shipped in a 2D barcoded Matrix tube containing 10ug of transfection-ready, dried plasmid DNA (reconstitute with 100 ul of water).

**Reconstitution Method:**

1. Centrifuge at 5,000xg for 5min.
2. Carefully open the tube and add 100ul of sterile water to dissolve the DNA.
3. Close the tube and incubate for 10 minutes at room temperature.
4. Briefly vortex the tube and then do a quick spin (less than 5000xg) to concentrate the liquid at the bottom.
5. Store the suspended plasmid at -20°C. The DNA is stable for at least one year from date of shipping when stored at -20°C.

**RefSeq:** [NM\\_016511.4](#)

**RefSeq Size:** 2781 bp

**RefSeq ORF:** 843 bp

**Locus ID:** 51267

**UniProt ID:** [Q8NC01](#)

**Cytogenetics:** 12p13.2

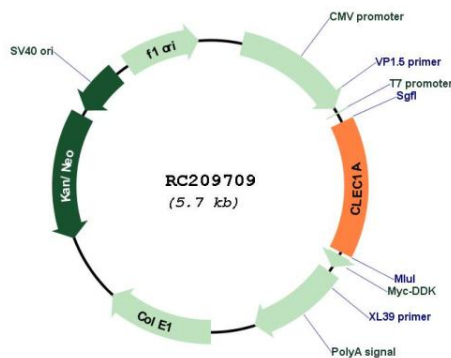
**Domains:** CLECT

**Protein Families:** Druggable Genome, Transmembrane

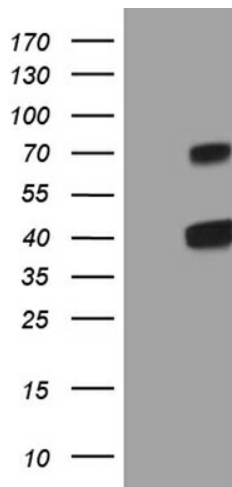
**MW:** 32 kDa

**Gene Summary:** This gene encodes a member of the C-type lectin/C-type lectin-like domain (CTL/CTLD) superfamily. Members of this family share a common protein fold and have diverse functions, such as cell adhesion, cell-cell signaling, glycoprotein turnover, and roles in inflammation and immune response. The encoded protein may play a role in regulating dendritic cell function. This gene is closely linked to other CTL/CTLD superfamily members on chromosome 12p13 in the natural killer gene complex region. Alternative splicing results in multiple transcript variants. [provided by RefSeq, Jul 2014]

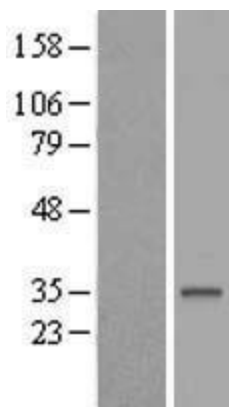
### Product images:



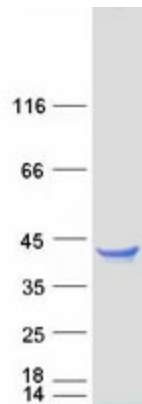
Circular map for RC209709



HEK293T cells were transfected with the pCMV6-ENTRY control (Cat# [PS100001], Left lane) or pCMV6-ENTRY CLEC1A (Cat# RC209709, Right lane) cDNA for 48 hrs and lysed. Equivalent amounts of cell lysates (5 ug per lane) were separated by SDS-PAGE and immunoblotted with anti-CLEC1A (Cat# [TA809213])(1:2000). Positive lysates [LY413948] (100ug) and [LC413948] (20ug) can be purchased separately from OriGene.



Western blot validation of overexpression lysate (Cat# [LY413948]) using anti-DDK antibody (Cat# [TA50011-100]). Left: Cell lysates from untransfected HEK293T cells; Right: Cell lysates from HEK293T cells transfected with RC209709 using transfection reagent MegaTran 2.0 (Cat# [TT210002]).



Coomassie blue staining of purified CLEC1A protein (Cat# [TP309709]). The protein was produced from HEK293T cells transfected with CLEC1A cDNA clone (Cat# RC209709) using MegaTran 2.0 (Cat# [TT210002]).