

Product datasheet for RC209704

NECAB1 (NM_022351) Human Tagged ORF Clone

Product data:

Product Type:	Expression Plasmids
Product Name:	NECAB1 (NM_022351) Human Tagged ORF Clone
Tag:	Myc-DDK
Symbol:	NECAB1
Synonyms:	EFCBP1; STIP-1
Mammalian Cell Selection:	Neomycin
Vector:	pCMV6-Entry (PS100001)
E. coli Selection:	Kanamycin (25 ug/mL)
ORF Nucleotide Sequence:	>RC209704 ORF sequence Red=Cloning site Blue=ORF Green=Tags(s)

TTTTGTAATACGACTCACTATAGGGCGCCGGGAATTCGTCGACTGGATCCGGTACCGAGGAGATCTGCC
GCC**CGATCGCC**

ATGGAAGATCCCAGGAGACATCGCCGTCTCCAACAACCTCTCGGAGGAGCTCAGCTCTGCTCTGCACC
TGTCCAAGGGCATGTCGATCTTCTCGACATACTGAGGAGAGCAGACAAAAATGATGATGGAAAATTATC
CTTTGAAGAATCAAAGCATATTTGCAGATGGTGTCTCAGTGGAGAAGAATTACACGAGCTTTTCCAT
ACCATTGATACATAATACTAATAATCTTGACACAGAAGAGCTATGTGAATATTTTCTCAGCACTTGG
GCGAGTATGAGAATGACTAGCAGCACTGAAGGCCTGAATCTTCCATCCTGAAGGCAATGGGCAAAAC
AAAGAAAGACTACCAAGAAGCCTCCAATTTGGAACAATTCGTAAC TAGATTTTTATTGAAGGAAACCTG
AATCAGCTGCAGTCTCTCCAGAATTCCTGGAATGTGCCATGGAACTACTGAGGAGCAAACCCGTC AAG
AAAGGCAAGGGCCAGCCAAGCCAGAAGTCTGTGATTCAATGGCCTGGAAAACGATCAAGCCGCGGAGT
CCAGAGACACAACAGCTTCTCCCAAACAGCCCTCAGTTAATGTGAGCGGTCCAGGCTTATTAGAAGAA
GACAACCAGTGGATGACCCAGATAAATAGACTCCAGAAATTAATTGATAGACTGGAAAAGAAGGATCTCA
AACTCGAACCACCAGAAGAAGAAATTATTGAAGGGAATACTAAATCTCACATCATGCTTGTGAGCGGCA
GATGCTGTGATAGAAGAGGACCTGGAAGAATTCAGCTCGCTCTGAAACTACTGATGATCTATGAT
TCTCAAAGTGGATGCTTGCATTTCTATACAGAAGCTTTCAAATGAATCTCGCTACATGATCTATGAT
TCTGGGAGAATAGTAGTGTATGGAATAGCCACCTTCAGACAAAATATAGCAAGACATTCCAAGAAGTAA
TGTGGATTTCTTGAAACTCCAGAACTCACATCTACAATGCTAGTTCTGCTTCGTGGTGGATCCTGAAC
AAC

ACGCGTACGCGGCCGCTCGAGCAGAAACTCATCTCAGAAGAGGATCTGGCAGCAAATGATATCCTGGATT
ACAAGGATGACGACGATAAGGTTTAA



[View online »](#)

Protein Sequence: >RC209704 protein sequence
Red=Cloning site Green=Tags(s)

MEDSQETSPSSNNSSEELSSALHLSKGMISFLDILRRADKNDGKLSFEFFKAYFADGVLSGEELHELH
 TIDHTNNTLDEELCEYFSQHLGEYENVLALEGLNLSILKAMGKTKKDYQEASNLEQVTRFLLK
 NQLQSLQNSLECAMETTEEQTRQERQGPAPPEVLSIQWPGKRSSRRVQRHNSFSPNSPQFN
 VSGPGLLEE DNQWMTQINRLQKLDRLKDLKLEPPEEEIIEGNTKSHIMLVQRQMSVIEED
 LEEFQLALKHYVESAS SQSGCLRISIQKLSNESRYMIYEFWENSSVWNSHLQTNYSKTFQ
 RSNVDFLETPELTSTMLVPASWWILN
 N

TRTRPLEQKLISEEDLAANDILDYKDDDDKV

Chromatograms: https://cdn.origene.com/chromatograms/mk6358_b12.zip

Restriction Sites: SgfI-MluI

Cloning Scheme:



* The last codon before the Stop codon of the ORF

ACCN: NM_022351

ORF Size: 1053 bp

OTI Disclaimer: The molecular sequence of this clone aligns with the gene accession number as a point of reference only. However, individual transcript sequences of the same gene can differ through naturally occurring variations (e.g. polymorphisms), each with its own valid existence. This clone is substantially in agreement with the reference, but a complete review of all prevailing variants is recommended prior to use. [More info](#)

OTI Annotation: This clone was engineered to express the complete ORF with an expression tag. Expression varies depending on the nature of the gene.

Components: The ORF clone is ion-exchange column purified and shipped in a 2D barcoded Matrix tube containing 10ug of transfection-ready, dried plasmid DNA (reconstitute with 100 ul of water).

Reconstitution Method:

1. Centrifuge at 5,000xg for 5min.
2. Carefully open the tube and add 100ul of sterile water to dissolve the DNA.
3. Close the tube and incubate for 10 minutes at room temperature.
4. Briefly vortex the tube and then do a quick spin (less than 5000xg) to concentrate the liquid at the bottom.
5. Store the suspended plasmid at -20°C. The DNA is stable for at least one year from date of shipping when stored at -20°C.

Note: Plasmids are not sterile. For experiments where strict sterility is required, filtration with 0.22um filter is required.

RefSeq: [NM_022351.5](#)

RefSeq Size: 5140 bp

RefSeq ORF: 1056 bp

Locus ID: 64168

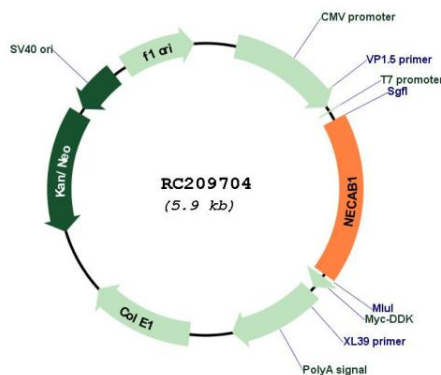
UniProt ID: [Q8N987](#)

Cytogenetics: 8q21.3

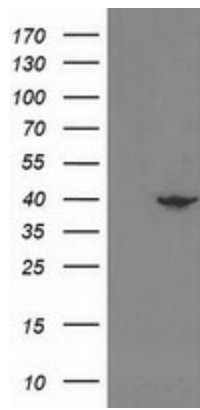
Domains: EFh, ABM

MW: 40.5 kDa

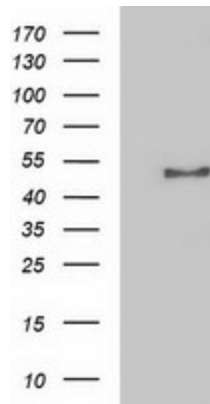
Product images:



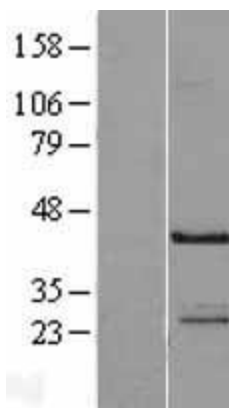
Circular map for RC209704



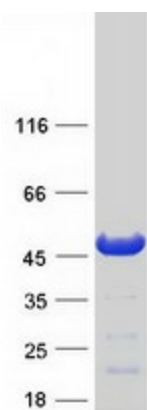
HEK293T cells were transfected with the pCMV6-ENTRY control (Left lane) or pCMV6-ENTRY NECAB1 (RC209704, Right lane) cDNA for 48 hrs and lysed. Equivalent amounts of cell lysates (5 ug per lane) were separated by SDS-PAGE and immunoblotted with anti-NECAB1 ([TA502546]). Positive lysates [LY411679] (100ug) and [LC411679] (20ug) can be purchased separately from OriGene.



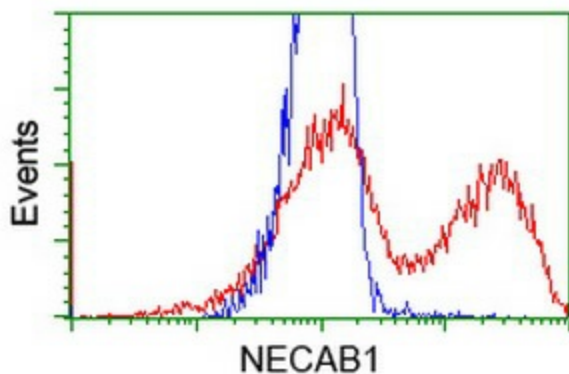
HEK293T cells were transfected with the pCMV6-ENTRY control (Cat# [PS100001], Left lane) or pCMV6-ENTRY NECAB1 (Cat# RC209704, Right lane) cDNA for 48 hrs and lysed. Equivalent amounts of cell lysates (5 ug per lane) were separated by SDS-PAGE and immunoblotted with anti-NECAB1(Cat# [TA502630]). Positive lysates [LY411679] (100ug) and [LC411679] (20ug) can be purchased separately from OriGene.



Western blot validation of overexpression lysate (Cat# [LY411679]) using anti-DDK antibody (Cat# [TA50011-100]). Left: Cell lysates from untransfected HEK293T cells; Right: Cell lysates from HEK293T cells transfected with RC209704 using transfection reagent MegaTran 2.0 (Cat# [TT210002]).



Coomassie blue staining of purified NECAB1 protein (Cat# [TP309704]). The protein was produced from HEK293T cells transfected with NECAB1 cDNA clone (Cat# RC209704) using MegaTran 2.0 (Cat# [TT210002]).



HEK293T cells transfected with either RC209704 overexpress plasmid (Red) or empty vector control plasmid (Blue) were immunostained by anti-NECAB1 antibody ([TA502546]), and then analyzed by flow cytometry.