

## Product datasheet for **RC209702**

### **UGT3A1 (NM\_152404) Human Tagged ORF Clone**

#### **Product data:**

Product Type:	Expression Plasmids
Product Name:	UGT3A1 (NM_152404) Human Tagged ORF Clone
Tag:	Myc-DDK
Symbol:	UGT3A1
Mammalian Cell Selection:	Neomycin
Vector:	pCMV6-Entry (PS100001)
E. coli Selection:	Kanamycin (25 ug/mL)



[View online »](#)

**ORF Nucleotide Sequence:**

>RC209702 ORF sequence  
 Red=Cloning site Blue=ORF Green=Tags(s)

TTTTGTAATACGACTCACTATAGGGCGGCCGGAATTCGTCGACTGGATCCGGTACCGAGGAGATCTGCC  
 GCC**CGCATCGCC**

ATGGTTGGGCAGCGGGTCTGCTTCTAGTGGCCTTCTTTCTGGGGTCTGCTCTCAGAGGCTGCCA  
 AAATCCTGACAATATCTACACTGGGTGGAAGCCATTACCTACTGTTGGACCGGGTCTCAGATTCTTCA  
 AGAGCATGGTCATAATGTGACTATGCTTCATCAGAGTGGAAAGTTTTTATGCCAGATATTAAGAGGAG  
 GAAAAATCATACCAAGTTATCAGGTGGTTTTACCTGAAGATCATCAAAAAAGAATTAAGAAGCATTTTG  
 ATAGCTACATAGAAACAGCATTGGATGGCAGAAAAAATCTGAAGCCCTTGTAAGCTAATGGAAATATT  
 TGGGACTCAATGTAGTTATTTGCTAAGCAGAAAGGATATAATGGATTCTTAAAGAATGAGAATATGAT  
 CTGGTATTTGTTGAAGCATTGATTTCTGTTCTTCTGATTGCTGAGAAGCTTGTAACCATTGTGG  
 CCATTCTCCACCACATTCGGCTCTTTGGATTTGGGCTACCAAGCCCCTTGCTTATGTTCCAGTATT  
 CCCTTCTTGCTGACTGATCACATGGACTCTGGGGCCGAGTGAAGAATTTCTGATGTTCTTTAGTTTC  
 TCAGGAGCCAATGGGACATGCAGTCTACATTTGACAACACCATCAAGGAGCATTCCCAGAAAGGCTCTA  
 GGCCAGTTTTGTCTCATCTTCTACTGAAAGCAGAGTTGTGGTTTGTAACTCTGATTTTGCCTTTGATT  
 TGCCCGGCCCTGCTTCCCAACTGTTTATATTGGAGGCTTGATGGAAAACTATTAACCAGTACCA  
 CAAGACTTGGACAATTCATTGCCAATTTGGGGATGCAGGGTTGTCTTGTGGCCTTTGGCTCCATGT  
 TGAACACCCATCAGTCCCAGGAAGTCTCAAGAAGATGCACAATGCCTTTGCCACCTCCCTCAAGGAGT  
 GATATGGACATGTGAGATTCTCATTGGCCAGAGATGTTCAATTTGGCCACAAAATGTGAAAATTGTGGAC  
 TGGCTTCTCAGAGTACCTCCTGGCTCACCCAGCATCCGTCTTTTGTCACTCATGGTGGCAGAACAA  
 CGGTAATGGAGGCCATCCGTGATGGTGTGCCATGGTGGGATTACCAGTCAATGGAGACCAGCATGGAAA  
 CATGGTCCGAGTAGTAGCCAAAAATTATGGTGTCTCTATCCGGTTGAATCAGGTACAGCCGACACACTG  
 ACACCTTACAATGAAACAAGTATAGAAGACAAGAGGTACAAGTCGGCAGTGGTGGCAGCCAGTGTATCC  
 TGCACTCTCAGCCCTGAGCCCCGACAGCGGCTGGTGGGCTGGATCGACCACATCCTCCAGACTGGGGG  
 AGCGACGCACCTCAAGCCCTATGCCTTCCAGCAGCCTTGGCATGAGCAGTACCTCATTGATGCTTTGTG  
 TTTCTGCTGGGGCTCACTCTGGGCACTATGTGGCTTTGTGGGAAGCTGCTGGGTGTGGTGGCCAGGTGGC  
 TGCGTGGGGCCAGGAAGGTGAAGAAGACA

**ACGCGT**ACGCGGCCGCTCGAGCAGAAACTCATCTCAGAAGAGGATCTGGCAGCAAATGATATCCTGGATT  
 ACAAGGATGACGACGATAAGGTTTAA

**Protein Sequence:**

>RC209702 protein sequence  
 Red=Cloning site Green=Tags(s)

MVQRVLLLVAFLLSGVLLSEAAKILTIISTLGGSHYLLLDKRVSQLQEHGHNVTMLHQSGKFLIPDIKEE  
 EKSQYQVIRWFSPEDHQKRIKKHFDYSIETALDGRKESEALVKLMEIFGTQCSYLLSRKDIMDSLKNENYD  
 LVFVEAFDFCSFLIAEKLKVPFVAILPTTFGSLDFGLPSPLSYVPVFPSSLTDHMDFWGRVKNFLMFFSF  
 SRSQWDMQSTFDNTIKEHFPEGSRPVLSHLLLKAEWVNSDFAFDFARPLLNTVYIGLMEKPIKVPV  
 QDLDNFIANFGDAGFVLVAFGSMNTHQSQEVLLKMHNAFAHLPGQVIWTCQSSHWPRDVHLATNVKIVD  
 WLPQSDLLAHPDIRLVFVTHGGQNSVMEAIRHGVPVGLPVNGDQHGMMVRVAKNYGVSIRLNQVADTL  
 TLTMKQVIEDKRYKSAVVAASVILHSQPLSPAQRLVGWIDHILQTGGATHLKPYAFQQPWHEQYLIDVVF  
 FLLGLTLGTMWLCGKLLGVVARWLRGARKVKKT

**TRTRPLEQKLI**SEEDLAANDILDYKDDDDKV

**Chromatograms:**

[https://cdn.origene.com/chromatograms/mk6677\\_h11.zip](https://cdn.origene.com/chromatograms/mk6677_h11.zip)

**Restriction Sites:**

Sgfl-Mlul

**Cloning Scheme:**


**ACCN:** NM\_152404

**ORF Size:** 1569 bp

**OTI Disclaimer:** The molecular sequence of this clone aligns with the gene accession number as a point of reference only. However, individual transcript sequences of the same gene can differ through naturally occurring variations (e.g. polymorphisms), each with its own valid existence. This clone is substantially in agreement with the reference, but a complete review of all prevailing variants is recommended prior to use. [More info](#)

**OTI Annotation:** This clone was engineered to express the complete ORF with an expression tag. Expression varies depending on the nature of the gene.

**Components:** The ORF clone is ion-exchange column purified and shipped in a 2D barcoded Matrix tube containing 10ug of transfection-ready, dried plasmid DNA (reconstitute with 100 ul of water).

- Reconstitution Method:**
1. Centrifuge at 5,000xg for 5min.
  2. Carefully open the tube and add 100ul of sterile water to dissolve the DNA.
  3. Close the tube and incubate for 10 minutes at room temperature.
  4. Briefly vortex the tube and then do a quick spin (less than 5000xg) to concentrate the liquid at the bottom.
  5. Store the suspended plasmid at -20°C. The DNA is stable for at least one year from date of shipping when stored at -20°C.

**RefSeq:** [NM\\_152404.4](#)

**RefSeq Size:** 2888 bp

**RefSeq ORF:** 1572 bp

**Locus ID:** 133688

**UniProt ID:** [Q6NUS8](#)

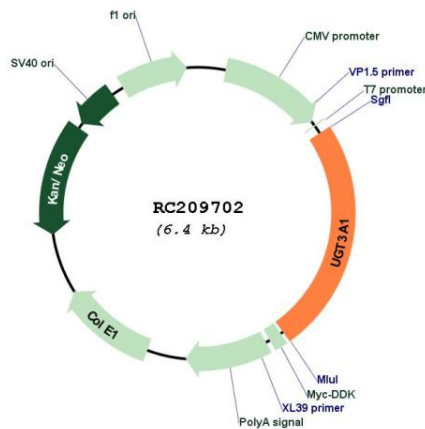
**Cytogenetics:** 5p13.2

**Protein Families:** Transmembrane

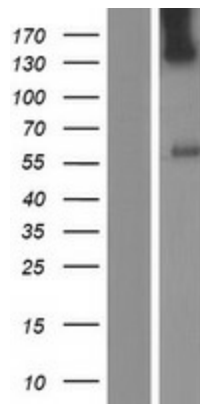
**MW:** 59.2 kDa

**Gene Summary:** UDP-glucuronosyltransferases catalyze phase II biotransformation reactions in which lipophilic substrates are conjugated with glucuronic acid to increase water solubility and enhance excretion. They are of major importance in the conjugation and subsequent elimination of potentially toxic xenobiotics and endogenous compounds (By similarity). [UniProtKB/Swiss-Prot Function]

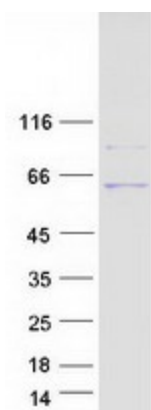
**Product images:**



Circular map for RC209702



Western blot validation of overexpression lysate (Cat# [LY407572]) using anti-DDK antibody (Cat# [TA50011-100]). Left: Cell lysates from untransfected HEK293T cells; Right: Cell lysates from HEK293T cells transfected with RC209702 using transfection reagent MegaTran 2.0 (Cat# [TT210002]).



Coomassie blue staining of purified UGT3A1 protein (Cat# [TP309702]). The protein was produced from HEK293T cells transfected with UGT3A1 cDNA clone (Cat# RC209702) using MegaTran 2.0 (Cat# [TT210002]).