

Product datasheet for **RC209694**

EIF4E3 (NM_173359) Human Tagged ORF Clone

Product data:

Product Type: Expression Plasmids
Product Name: EIF4E3 (NM_173359) Human Tagged ORF Clone
Tag: Myc-DDK
Symbol: EIF4E3
Synonyms: eIF-4E3; eIF4E-3
Mammalian Cell Selection: Neomycin
Vector: pCMV6-Entry (PS100001)
E. coli Selection: Kanamycin (25 ug/mL)
ORF Nucleotide Sequence: >RC209694 ORF sequence
Red=Cloning site Blue=ORF Green=Tags(s)

TTTTGTAATACGACTCACTATAGGGCGCCGGAATTCGTCGACTGGATCCGGTACCGAGGAGATCTGCC
GCC**CGGATCGCC**

ATGAGAGGAGAGAGGCGACCACTTTGGGAAGAGGAGAGTAATGCAAAGGGTGGCGTATGGAAGATGAAAG
TCCCCAAGGACAGCACGTCCACAGTTTGGAAAGAGTTGCTGTTAGCAACCATCGGGGAACAGTTCACAGA
CTGTGCCCGCAGCAGATGATGAAGTAATAGGAGTTAGTGTGAGTTCGGGACCGAGAAGACGTCGTCCAA
GTCTGGAATGTAATGCCTCTTTAGTGGGTGAAGCGACTGTTTTAGAAAAGATCTATGAACCTCTGCCCC
ACATAACTTTAAAGCAGTATTTTATAAACCCCATGAAGAGCATCATGCTTTTGAAGGTGGACGTGGAAA
ACAC

ACGCGTACGCGGCCGCTCGAGCAGAACTCATCTCAGAAGAGGATCTGGCAGCAAATGATATCCTGGATT
ACAAGGATGACGACGATAAGGTTTAA

Protein Sequence: >RC209694 protein sequence
Red=Cloning site Green=Tags(s)
MRGERRPLWEEESNAKGGVWKMVPKDSTSTVWKE LLATIGE QFTDCAAADDEIVGSVSVRDREDVVQ
VWNVNASLVGEATVLEKIYELLPHITFKAVFYKPH EEHHA FEGRGKH

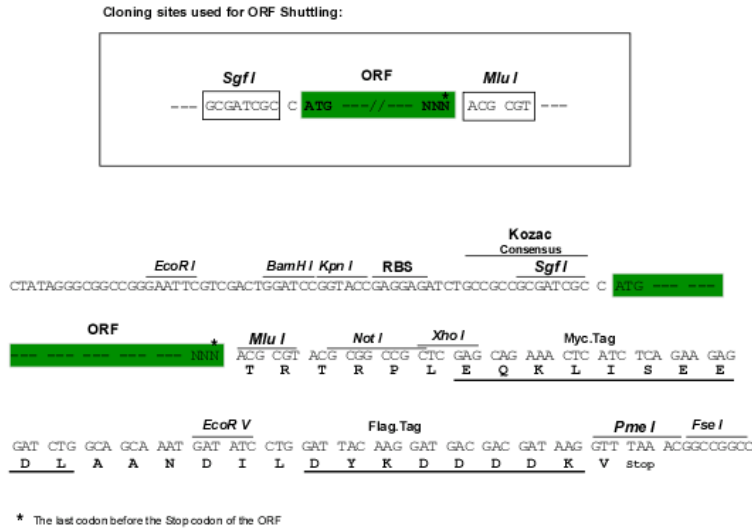
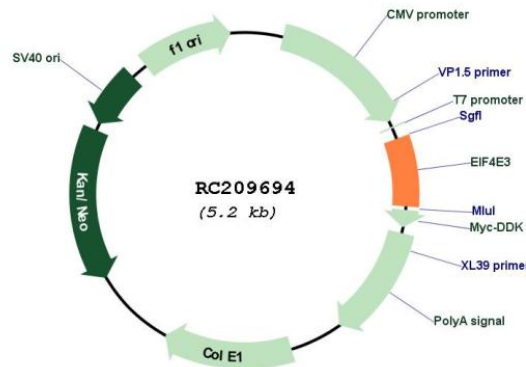
TRTRPLEQKLISEEDLAANDILDYKDDDDKV

Chromatograms: https://cdn.origene.com/chromatograms/mk6771_b01.zip

Restriction Sites: SgfI-MluI



[View online »](#)

Cloning Scheme:

Plasmid Map:


ACCN: NM_173359

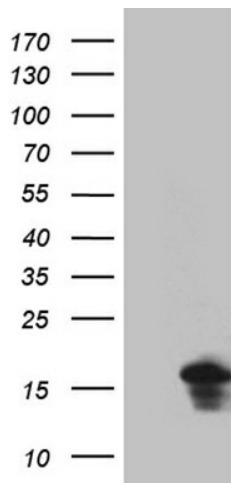
ORF Size: 354 bp

OTI Disclaimer: The molecular sequence of this clone aligns with the gene accession number as a point of reference only. However, individual transcript sequences of the same gene can differ through naturally occurring variations (e.g. polymorphisms), each with its own valid existence. This clone is substantially in agreement with the reference, but a complete review of all prevailing variants is recommended prior to use. [More info](#)

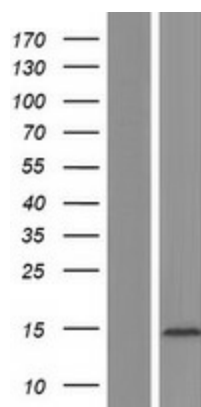
OTI Annotation: This clone was engineered to express the complete ORF with an expression tag. Expression varies depending on the nature of the gene.

Components:	The ORF clone is ion-exchange column purified and shipped in a 2D barcoded Matrix tube containing 10ug of transfection-ready, dried plasmid DNA (reconstitute with 100 ul of water).
Reconstitution Method:	<ol style="list-style-type: none">1. Centrifuge at 5,000xg for 5min.2. Carefully open the tube and add 100ul of sterile water to dissolve the DNA.3. Close the tube and incubate for 10 minutes at room temperature.4. Briefly vortex the tube and then do a quick spin (less than 5000xg) to concentrate the liquid at the bottom.5. Store the suspended plasmid at -20°C. The DNA is stable for at least one year from date of shipping when stored at -20°C.
RefSeq:	NM_173359.5
RefSeq Size:	6185 bp
RefSeq ORF:	357 bp
Locus ID:	317649
UniProt ID:	Q8N5X7
Cytogenetics:	3p13
MW:	13.3 kDa
Gene Summary:	EIF4E3 belongs to the EIF4E family of translational initiation factors that interact with the 5-prime cap structure of mRNA and recruit mRNA to the ribosome (Joshi et al., 2004 [PubMed 15153109]).[supplied by OMIM, Mar 2008]

Product images:



HEK293T cells were transfected with the pCMV6-ENTRY control (Cat# [PS100001], Left lane) or pCMV6-ENTRY EIF4E3 (Cat# RC209694, Right lane) cDNA for 48 hrs and lysed. Equivalent amounts of cell lysates (5 ug per lane) were separated by SDS-PAGE and immunoblotted with anti-EIF4E3 (Cat# [TA811779])(1:2000). Positive lysates [LY406613] (100ug) and [LC406613] (20ug) can be purchased separately from OriGene.



Western blot validation of overexpression lysate (Cat# [LY427463]) using anti-DDK antibody (Cat# [TA50011-100]). Left: Cell lysates from untransfected HEK293T cells; Right: Cell lysates from HEK293T cells transfected with [RC225053] using transfection reagent MegaTran 2.0 (Cat# [TT210002]).