

Product datasheet for RC209692

EPHA10 (NM_173641) Human Tagged ORF Clone

Product data:

Product Type: Expression Plasmids
 Product Name: EPHA10 (NM_173641) Human Tagged ORF Clone
 Tag: Myc-DDK
 Symbol: EPHA10
 Mammalian Cell Selection: Neomycin
 Vector: pCMV6-Entry (PS100001)
 E. coli Selection: Kanamycin (25 ug/mL)
 ORF Nucleotide Sequence: >RC209692 representing NM_173641
 Red=Cloning site Blue=ORF Green=Tags(s)

TTTTGTAATACGACTCACTATAGGGCGGCCGGGAATTCGTCGACTGGATCCGGTACCGAGGAGATCTGCC
 GCC**CGATCGCC**

ATGGAGACCTGCGCCGGTCCACACCCGCTGCGCCTCTTCTCTGCCGGATGCAGCTCTGTCTCGCGCTGC
 TTTTGGGACCCTGGCGCCTGGGACCGCCGAGGAAGTTATCCTCTGGATTCCAAAGCCTCCCAGGCCGA
 GCTGGGCTGGACTGCACTGCCAAGTAATGGGTGGGAGGAGATCAGCGGCGTGGATGAACACGACCGTCCC
 ATCCGCACGTACCAAGTGTGCAATGTGCTGGAGCCCAACCAGGACAACCTGGCTGCAGACTGGCTGGATAA
 GCCGTGGCCGCGGCAGCGCATCTTCGTGGAACCTGCAGTTCACACTCCGTGACTGCAGCAGCATCCCTGG
 CGCCGCGGGTACCTGCAAGGAGACCTTCAACGTCTACTACCTGGAACTGAGGCCGACCTGGGCCGTGGG
 CGTCCCCGCCTAGCGGCAGCCGCCCCGCAAAATCGACACGATCGCGGGGACGAGAGCTTACCGCAGG
 GCGACCTGGGTGAGCGCAAGATGAAGCTGAACACAGAGGTGCGCGAGATCGGACCGCTCAGCCGGCGGGG
 TTTCCACCTGGCCTTTCAGGACGTGGGCGCATGCGTGGCGCTTGTCTCGGTGCGCGTCTACTACAAGCAG
 TGCCGCGCACCGTGGGGGCTGGCCACGTTCCAGCCACCGCAGCCGAGAGCGCCTTCTCCACTGG
 TGGAAAGTGGCCGGAACGTGCGTGGCGCACTCGGAAGGGGAGCCTGGCAGCCCCCACGCATGCATGCGG
 CGCCGACGGCGAGTGGTGGTGCCTGTGGGCCGCTGCAGCTGCAGCGGGGATCCAGGAGCGTGGTGAC
 TTCTGCGAAGGTATCCAGTTGGCTGGGGCCGTGGGGTGGGAGTG

ACGCGTACGCGGCCGCTCGAGCAGAACTCATCTCAGAAGAGGATCTGGCAGCAAATGATATCCTGGATT
 ACAAGGATGACGACGATAAGGTTTAA



[View online »](#)

Protein Sequence: >RC209692 representing NM_173641
 Red=Cloning site Green=Tags(s)

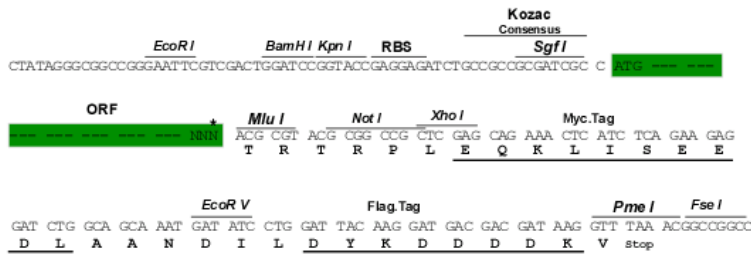
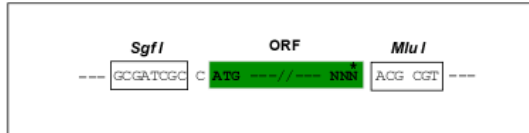
METCAGPHPLRLFLCRMQLCLALLLGPWRPGTAEVILLDSKASQALGWTALPSNGWEEISGVDEHDRP
 IRTYQVCNVLEPNQDNWLQGTWISRGRGQRIFVELQFTLRDCSSIPGAAGTCKETFNVYYLETEADLGRG
 RPRLGGSRPKRIDTIAADESFTQGD LGERKMKLNTEVREIGPLSRRGFHLAFQDVGACVALVSVRVYYKQ
 CRATVRGLATFPATAAEAFSTLVEVAGTCAVHSEGEPSPPRMHCGADGEWLVPVGRSCSAGFQERGD
 FCEGIQLAGGRGVGV

TRTRPLEQKLISEEDLAANDILDYKDDDDKV

Restriction Sites: SgfI-MluI

Cloning Scheme:

Cloning sites used for ORF Shuttling:



* The last codon before the Stop codon of the ORF

ACCN: NM_173641

ORF Size: 885 bp

OTI Disclaimer: The molecular sequence of this clone aligns with the gene accession number as a point of reference only. However, individual transcript sequences of the same gene can differ through naturally occurring variations (e.g. polymorphisms), each with its own valid existence. This clone is substantially in agreement with the reference, but a complete review of all prevailing variants is recommended prior to use. [More info](#)

OTI Annotation: This clone was engineered to express the complete ORF with an expression tag. Expression varies depending on the nature of the gene.

Components: The ORF clone is ion-exchange column purified and shipped in a 2D barcoded Matrix tube containing 10ug of transfection-ready, dried plasmid DNA (reconstitute with 100 ul of water).

Reconstitution Method:

1. Centrifuge at 5,000xg for 5min.
2. Carefully open the tube and add 100ul of sterile water to dissolve the DNA.
3. Close the tube and incubate for 10 minutes at room temperature.
4. Briefly vortex the tube and then do a quick spin (less than 5000xg) to concentrate the liquid at the bottom.
5. Store the suspended plasmid at -20°C. The DNA is stable for at least one year from date of shipping when stored at -20°C.

Note: Plasmids are not sterile. For experiments where strict sterility is required, filtration with 0.22um filter is required.

RefSeq: [NM_173641.2](#), [NP_775912.2](#)

RefSeq Size: 2082 bp

RefSeq ORF: 888 bp

Locus ID: 284656

UniProt ID: [Q5JZY3](#)

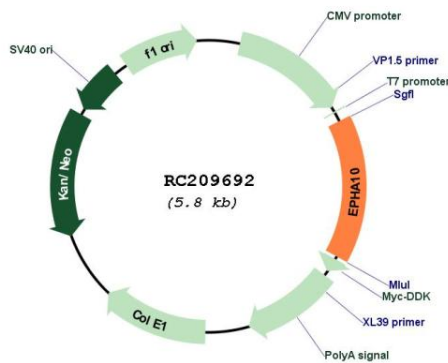
Cytogenetics: 1p34.3

Protein Families: Druggable Genome, Protein Kinase

MW: 32.1 kDa

Gene Summary: Ephrin receptors, the largest subfamily of receptor tyrosine kinases (RTKs), and their ephrin ligands are important mediators of cell-cell communication regulating cell attachment, shape, and mobility in neuronal and epithelial cells (Aasheim et al., 2005 [PubMed 15777695]). See MIM 179610 for additional background on Eph receptors and ephrins.[supplied by OMIM, Mar 2008]

Product images:



Circular map for RC209692