

## Product datasheet for RC209688

### Tau tubulin kinase 2 (TTBK2) (NM\_173500) Human Tagged ORF Clone

#### Product data:

Product Type:	Expression Plasmids
Product Name:	Tau tubulin kinase 2 (TTBK2) (NM_173500) Human Tagged ORF Clone
Tag:	Myc-DDK
Symbol:	Tau tubulin kinase 2
Synonyms:	SCA11; TTBK
Mammalian Cell Selection:	Neomycin
Vector:	pCMV6-Entry (PS100001)
E. coli Selection:	Kanamycin (25 ug/mL)
ORF Nucleotide Sequence:	>RC209688 representing NM_173500 Red=Cloning site Blue=ORF Green=Tags(s)

TTTTGTAATACGACTCACTATAGGGCGGCCGGAATTCGTCGACTGGATCCGGTACCGAGGAGATCTGCC  
GCC**CGATCGCC**

ATGAGTGGGGGAGGAGAGCAGCTGGATATCCTGAGTGTTGGAATCCTAGTGAAAGAAAGATGGAAAGTGT  
TGAGAAAGATTGGGGGTGGGGCTTTGGAGAAATTTACGATGCCTTGACATGCTCACCAGGAAAAATGT  
TGCACTGAAGGTGGAATCAGCTCAACAACCAAAACAAGTTCTGAAAATGGAAGTTGCTGTTTTGAAAAAG  
CTGCAAGGGAAAGACCATGTTTGTAGATTTATTGGCTGTGGGAGGAATGATCGATTCAACTATGTGGTCA  
TGCAGTTGCAGGGTCGGAATCTGGCAGATCTTCGCCGTAGCCAGTCCCGAGGCACATTCACCATTAGTAC  
CACTCTCCGGCTGGGTAGACAGATTTTGGAGTCTATTGAAAGCATTATTCTGTGGGATTCTTGCATCGA  
GACATCAAACCGTCGAACTTCGCTATGGGTGCTTTTCTAGTACATGTAGGAAATGTTACATGCTTGATT  
TTGGCTTGGCTCGACAATTTACCAATTCCTGTGGTGACGTGACACCACCTCGAGCTGTGGCAGGTTTTCG  
AGGGACAGTTCTTATGCATCAATCAACGCACATCGGAACAGGGAAATGGGAAGACATGATGACCTTTGG  
TCCTTATTCTACATGTTGGTGGAGTTTGTGGTTGGTCAGCTGCCCTGGAGAAAAATAAGGACAAGGAGC  
AAGTAGGCTCTATTAAGGAGAGATATGACCACAGGCTCATGTTGAAACATCTCCCTCCAGAATTCAGCAT  
CTTTCTAGACCATATCTCTTCTTTGGATTATTTTACAAAACCAGACTACCAGCTTCTTACATCCGTGTTT  
GACAATAGCATCAAGACTTTTGGAGTAATTGAGAGTGACCCTTTTGACTGGGAGAAGACTGGAAATGATG  
GCTCCCTAACAACCACCCTACTTCTACCACCCTCAGTTGCACACTCGCTTGACCCTGCTGCAATTGG  
AATTGCCAATGCTACTCCATCCCTGGAGACTTCTCGAGAAAAACAGATGAGGTATTTCCAGATGAA  
CAGCTTAGCGATGGAGAAAAATGGCATCCCTGTTGGTGTGTACCAGATAAATGCCTGGATCTCTGGGAC  
ACCCCGTCCCGAGGAGAAGGATGTTTGGGAAGAGATGGATGCCAACAACAAAGATAAAGCTTGGAAAT  
TTGTAAGGCTGCTACTGAAGAGGAGAACAGCCATGGCCAGGCAATGGTCTTCTCAATGCTCCAAGCCTT  
GGGTACCAATTCGTGTCGCTCAGAGATTACTCAGCCAGACAGAGATATCCACTGGTGCAGAAAGTTAC  
GTTCCATTACAGCTTTGAGCTGAAAAACGTCTGACCCTGGAGCCAAAGCCAGACACTGACAAGTTCTT  
TGAGACCTGCCTGGAGAAAAATGCAGAAAGATACCAGTGCAGGAAAAGAATCTATTCTCCCTGCTGCTG



[View online »](#)

CATAAGCCTTGCCTTCCTGCTGTGTCCCGTACTGACCACATCTGGCACTATGATGAAGAATATCTTCCAG  
ATGCCTCCAAGCCTGCTTCTGCCAACCCCTGAGCAGGCAGATGGTGGTGGCAGCAATGGATTTATAGC  
TGTTAACCTGAGCTCTTGAAGCAAGAAATGATTCCAAAGAATGGGTGATTGTGGACAAGGAGCAGGAC  
CTTCAGGATTTTAGGACAAATGAGGCTGTAGGACATAAAACAACCTGGAAGTCCTTCTGATGAGGAGCCTG  
AAGTACTTCAAGTCTGGAGGCATCACCTCAAGATGAAAAGCTCCAGTTAGTCCCTGGGCAGAAAATGA  
TCATTTAAAGAAGGAAACCTCAGGTGTGGTCTTAGCACTTTCTGCAGAGGGTCCCTACTGCTGCTTCA  
GAACAATATACAGATAGGCTGGAACCTCCAGCCTGGAGCTGCTAGTCAGTTTATTGCAGCAGCAGCCACAA  
GTCTAATGGAGGCGCAGGCAGAAGGACCCCTTACAGCGATTACAATTCTAGACCTTCTGTGGCATCTAC  
ACAGTCAACTTCAGGAAGCTTCTACTGTGGTCAAGCAGCCAGAGAAGAAAGATCTTCAGCCCATGGAGCCC  
ACTGTGGAACCTTACTCTCCAAGGGAAAACCTTCTGGCTTGGTGTGACAGAGGGTGAACCTCCTAGTG  
GAGGAAGCAGAACAGATTTGGGGCTTCAGATAGATCACATTGGTCATGACATGTTACCCAACATTAGAGA  
AAGTAACAAATCTCAAGACCTGGGACCAAAAAGAACTTCTGATCATAATAGACTGGTGTGAGAGAAATTT  
GAAAATCTCCCTGGGAAAACGAAGAGAAAAGCATCCTTTAGAGTCAGATAATGAAGATGAGAAGTTAA  
GTAGAGGGCAGCATTGTATTGAGATCTCCTCTCTCCAGGAGATTTGGTAATTGTGAAAAGGATCACTC  
AGCTACTACTGAACCTTGTGATGTGACAAAACACAGACTTTTAGTGTGGTGCCAAATCAAGACAAAAT  
AATGAGATAATGAAGCTTCTGACAGTTGGAACCTCAGAAAATTTCTTCCAGAGACATTGACCCACATGTTG  
AAGGTCAGATAGGCCAAGTGGCAGAAAATGCAAAAAAATAGATATCTAAGGATGATGACATCATGAGTGA  
AGACTTGGCAGGTCATCAAGGAGACCTCTACTTTTTTGACCAAGAGGGCAAGAGAGAGAAAAATCACC  
CCTAGAAATGGAGAACTATTTCAATTGTGTTTCAGAGAATGAACATGGTGGCCCAACCCGGAAGGATAGG  
TTAGGTCATCCTTTGTAAGTACACAGCCGAATCCCTGTTTTAGCACAAGAGATAGACTCAACTTTGGA  
ATCATCCTCTCCAGTTTCTGAAAAGAAAAGCTCCTCCAAAAGAAAAGCCTATCAGCCAGACCTAGTCAAG  
CTTCTGGTGGAAAAAGACAATTCAGTCCCTTCTGGCGACCTCTCAAGTGCCTCTGATAAATTGCTAG  
AGGAGAAACTAGCTACTGTTCTGCTCCCTTTTGTGAGGAGGAAGTCTCACTCCCTTTTCAAGACTGAC  
AGTAGATTCTCACCTGAGTAGGTCAGCTGAAGATAGCTTTCTGTACCCATCATCTCCAGTCTAGAAAAG  
AGCAAAATTCAGGCCAGTTTTCATGGTCAACACAGATCAGGTCAATAGCTCAACTTCGTCTCAGTTCT  
TTCTCGGCCACCACCAGGAAAGCCACCACGAGGCTGGAGTAGAAGCCAGGCTACGCAGATATAAAGT  
CCTAGGGAGTAGTAAGTCCGACTCAGACCTTTTCTCCGCTGGCCAAATTTCTTCAAAATGGATCTCAG  
AAACCCCGGAGCACTACTCAGTGAAGAGTCCAGGATCTCCTCACAATCCAAAACACCACCAAGAGTC  
CAGTTGTCCTCGCAGGAGTCCAGTGCCTCTCCTCGAAGCTCATCCTTGCTCGCACGTCTAGTTCCTC  
ACCATCTAGGGCTGGACGGCCCCACCATGACCAGAGGAGTTCGTCACATCTGGGAGAAAGCAAGTCA  
CCTCCAGCCACTCAGGATCTTCTCCTCCAGGAGGCTGCCAACAGGAGCATTGCAAACCCAGCAAGA  
ATGGCCTGAAAGGATCCGGCAGCCTCCACCACCACTCAGCCAGCACTAAAACCCCAAGGAAGAGTAA  
GCCAGCCAGTAACTCAGCAGA

ACGCGTACGCGGCCGCTCGAGCAGAACTCATCTCAGAAGAGGATCTGGCAGCAATGATATCCTGGATT  
ACAAGGATGACGACGATAAGGTTTAA

**Protein Sequence:** >RC209688 representing NM\_173500  
 Red=Cloning site Green=Tags(s)

```

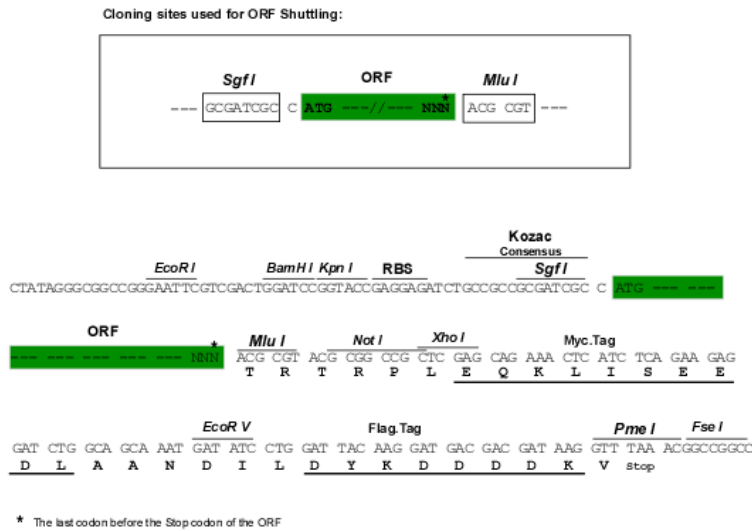
MSGGGEQLDILSVGILVKERWVLRKIGGGGFGEIYDALDMLTRENVALKVESAQPKQVLKMEVAVLKK
LQKGDHVCRFIGCGRNDRFNYYVMQLQGRNLADLRRSQSRGTFITSTTLRLGRQILESIESIHSVGLHR
DIKPSNFAMGRFPSTCRKCYMLDFGLARQFTNSCGDVRPPRAVAGFRGTVRYASINAHNRNEMGRHDDLW
SLFYMLVEFVVGQLPWRKIKDKEQVGSIKERYDHRMLKHLPEFSIFLDHISSLDYFTKPDYQLLTSVF
DNSIKTFGVIESDPFDWEKTGNDGSLTTTTSTTPQLHTRLTPAAIGIANATPIPGDLLRENTDEVFPDE
QLSDGENGIPVGVSPDKLPGSLGHPRPQEKDVWEEMDANKNKIKLGICKAATEEENSHGQANGLLNAPSL
GSPIRVRSEITQPDRDIPLVRKLRSIHSFELEKRLTLEPKPDTDKFLETCEKMQKDT SAGKESILPALL
HKPCVPAVSRTDHIWHYDEEYLPDASKPASANTPEQADGGGSGNGFIAVNLSSCKQEIDSKIEWVIDKEQD
LQDFRTNEAVGHKTTGSPSDEEPEVLQVLEASPQDEKLQGPWAENDHLKKTSGVVLALSAEGPPTAAS
EQYTDRLLELQPGAASQFIAATPTSLMEAQAEGPLTAITIPRPSVASTQSTSGSFHCGQQPEKDLQPMEP
TVELYSRENFSGLVVTEGEPSSGGSRDGLQIDHIGHDMLPNIRESNKSQDLGPKELPDHNRLLVREF
ENLPGETEESILLESDNEDEKLSRGQHCIEISSLPDGLVIVEKDHSATTEPLDVTKTQTFVVPNQDKN
NEIMKLLTVGTSEISSRDIDPHVEGQIGQVAEMQKNKISKDDIMSEDLPGHQGDLSTFLHQEGKREKIT
PRNGELFHCVSENEHGAPTRKDMVRSSFVTRHSRIPVLAQEIDSTLESSSPVSAKEKLLQKAYQPDLVK
LLVEKRQFKSFLGDLSSASDKLLEEKLATVPAPFCEEEVLPFSSRLTVDSHLSRSAEDSFLSPIISQSRK
SKIPRPVSWVNTDQVNSSTSSQFFPRPPGKPPTRPGVEARLRRYKVLGSSNSDSDLFSRLAQILQNGSQ
KPRSTTQCKSPGSPHNPKTPPKSPVPPRRSPSASPRSSSLPRTSSSSPSRAGRPHHDQRSSSPHLGRSKS
PPSHSGSSSSRRSCQEHCKPSKNGLKSGSLHHHSASTKTPQGSKPASKLSR
  
```

TRTRPLEQKLISEEDLAANDILDYKDDDDKV

**Chromatograms:** [https://cdn.origene.com/chromatograms/mg4141\\_h04.zip](https://cdn.origene.com/chromatograms/mg4141_h04.zip)

**Restriction Sites:** SgfI-MluI

**Cloning Scheme:**

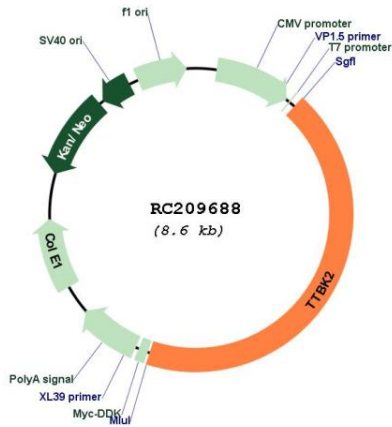


**ACCN:** NM\_173500

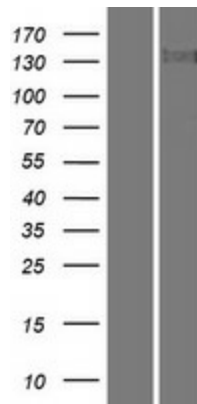
**ORF Size:** 3732 bp

<b>OTI Disclaimer:</b>	The molecular sequence of this clone aligns with the gene accession number as a point of reference only. However, individual transcript sequences of the same gene can differ through naturally occurring variations (e.g. polymorphisms), each with its own valid existence. This clone is substantially in agreement with the reference, but a complete review of all prevailing variants is recommended prior to use. <a href="#">More info</a>
<b>OTI Annotation:</b>	This clone was engineered to express the complete ORF with an expression tag. Expression varies depending on the nature of the gene.
<b>Components:</b>	The ORF clone is ion-exchange column purified and shipped in a 2D barcoded Matrix tube containing 10ug of transfection-ready, dried plasmid DNA (reconstitute with 100 ul of water).
<b>Reconstitution Method:</b>	<ol style="list-style-type: none"><li>1. Centrifuge at 5,000xg for 5min.</li><li>2. Carefully open the tube and add 100ul of sterile water to dissolve the DNA.</li><li>3. Close the tube and incubate for 10 minutes at room temperature.</li><li>4. Briefly vortex the tube and then do a quick spin (less than 5000xg) to concentrate the liquid at the bottom.</li><li>5. Store the suspended plasmid at -20°C. The DNA is stable for at least one year from date of shipping when stored at -20°C.</li></ol>
<b>Note:</b>	Plasmids are not sterile. For experiments where strict sterility is required, filtration with 0.22um filter is required.
<b>RefSeq:</b>	<a href="#">NM_173500.4</a>
<b>RefSeq Size:</b>	5613 bp
<b>RefSeq ORF:</b>	3735 bp
<b>Locus ID:</b>	146057
<b>UniProt ID:</b>	<a href="#">Q6IQ55</a>
<b>Cytogenetics:</b>	15q15.2
<b>Protein Families:</b>	Druggable Genome, Protein Kinase
<b>MW:</b>	137.2 kDa
<b>Gene Summary:</b>	This gene encodes a serine-threonine kinase that putatively phosphorylates tau and tubulin proteins. Mutations in this gene cause spinocerebellar ataxia type 11 (SCA11); a neurodegenerative disease characterized by progressive ataxia and atrophy of the cerebellum and brainstem. [provided by RefSeq, Aug 2009]

Product images:



Circular map for RC209688



Western blot validation of overexpression lysate (Cat# [LY406582]) using anti-DDK antibody (Cat# [TA50011-100]). Left: Cell lysates from untransfected HEK293T cells; Right: Cell lysates from HEK293T cells transfected with RC209688 using transfection reagent MegaTran 2.0 (Cat# [TT210002]).