

Product datasheet for **RC209687**

IL7R alpha (IL7R) (NM_002185) Human Tagged ORF Clone

Product data:

Product Type:	Expression Plasmids
Product Name:	IL7R alpha (IL7R) (NM_002185) Human Tagged ORF Clone
Tag:	Myc-DDK
Symbol:	IL7R alpha
Synonyms:	CD127; CDW127; IL-7R-alpha; IL7RA; ILRA
Mammalian Cell Selection:	Neomycin
Vector:	pCMV6-Entry (PS100001)
E. coli Selection:	Kanamycin (25 ug/mL)



[View online »](#)

ORF Nucleotide Sequence:

>RC209687 ORF sequence
 Red=Cloning site Blue=ORF Green=Tags(s)

TTTTGTAATACGACTCACTATAGGGCGGCCGGAATTCGTCGACTGGATCCGGTACCGAGGAGATCTGCC
 GCC**CGCATCGCC**

ATGACAATTCTAGGTACAACCTTTTGGCATGGTTTTTTCTTACTTCAAGTCGTTTCTGGAGAAAGTGGCT
 ATGCTCAAAATGGAGACTTGAAGATGCAGAACTGGATGACTACTCATTCTCATGCTATAGCCAGTTGGA
 AGTGAATGGATCGCAGCACTCACTGACCTGTGCTTTTGAGGACCCAGATGTCAACATACCAATCTGGAA
 TTTGAAATATGTGGGGCCCTCGTGGAGTAAAGTGCCTGAATTTTCAGGAACTACAAGAGATATATTTCA
 TCGAGACAAAATAATCTTACTGATTGGAAGAGCAATATATGTGTGAAGTTGGAGAAAAGAGTCTAAC
 CTGCAAAAAATAGACCTAACCCTATAGTTAAACCTGAGGCTCCTTTTGACCTGAGTGCATCTATCGG
 GAAGGAGCCAATGACTTTGTGGTGACATTAATACATCACACTTGCAAAAAGAAGTATGTAAGTTTAA
 TGCACGATGTAGCTTACCGCCAGGAAAAGGATGAAAACAATGGACGCATGTGAATTTATCCAGCACAAA
 ACTGACTCCTGCAGAGAAAGCTCCAACCGGCAGCAATGTATGAGATTAAGTTTCGATCCATCCCTGAT
 CACTATTTTAAAGGCTTCTGGAGTGAATGGAGTCCAAGTTATTACTTCAGAACTCCAGAGATCAATAATA
 GCTCAGGGGAGATGGATCCTATCTTACTAACCATCAGCATTGAGTTTTTCTGTGCTCTGTTGGT
 CATCTTGGCCTGTGTGTTATGGAAAAAAGGATTAAGCCTATCGTATGGCCAGTCTCCCGATCATAAG
 AAGACTCTGGAACATCTTTGTAAGAAACCAAGAAAAATTTAAATGTGAGTTTCAATCCTGAAAGTTTCC
 TGGACTGCCAGATTCATAGGGTGGATGACATTCAGCTAGAGTGAAGTGAAGGTTTCTGCAAGATAC
 GTTTCCTCAGCAACTAGAAGATCTGAGAAGCAGAGGCTTGGAGGGGATGTCAGAGCCCCAACTGCCCA
 TCTGAGGATGTAGTCATCACTCCAGAAAGCTTTGGAAGAGATTCATCCCTCACATGCCTGGCTGGGAATG
 TCAGTGCATGTGACGCCCTATTCTCTCCCTCCAGTCCCTAGACTGCAGGGAGAGTGGCAAGAATGG
 GCCTCATGTGTACCAGGACCTCCTGCTTAGCCTTGGGACTACAAACAGCACGCTGCCCTCCATTTTCT
 CTCCAATCTGGAATCCTGACATTGAACCCAGTTGCTCAGGGTCAGCCATTCTTACTTCCCTGGGATCAA
 ATCAAGAAGAAGCATATGTCACCATGTCCAGTCTTACCAAAAACCAG

ACGCGTACGCGGCCGCTCGAGCAGAACTCATCTCAGAAGAGGATCTGGCAGCAATGATATCCTGGATT
 ACAAGGATGACGACGATAAGGTTTAA

Protein Sequence:

>RC209687 protein sequence
 Red=Cloning site Green=Tags(s)

MTILGTTFGMVFSLQVVSAGESGYAQNGLDLEAELDDYSFSCYSQLEVNQSQHSLTCAFEDPDVNITNLE
 FEICGALVEVKCLNFRKLQEIYFIETKKFLLIGKSNICVKVGEKSLTCKKIDLTTIVKPEAPFDLSVIYR
 EGANDFVVFNTSHLQKKYVKVLMHDVAYRQEKDENKWHVNLSTKLTLQRKLQPAAMYIIVRSIPD
 HYFKGFWEWSPSYFRTPENNSGEMDPILLTISILSFFSVALLVILACVLWKKRIKPIVWPSLPDHP
 KTLLEHLCKKPRKNLNVSPNPFSLDCQIHRVDDIQARDEVEGFLQDTFPQQL EESEKQRLGGDVQSPNCP
 SEDVITPESFGRDSSLTCLAGNVSACDAPILSPSRSLDCRESGKNGPHVYQDLLLLSLGTTNSTLPPPF
 LQSGILTLNPVAQGQPILTSLGSNQEEAYVTMSSFYQNQ

TRTRPLEQKLISEEDLAANDILDYKDDDDKV

Chromatograms:

https://cdn.origene.com/chromatograms/mk6198_f06.zip

Restriction Sites:

Sgfl-Mlul

Cloning Scheme:


ACCN: NM_002185

ORF Size: 1377 bp

OTI Disclaimer: The molecular sequence of this clone aligns with the gene accession number as a point of reference only. However, individual transcript sequences of the same gene can differ through naturally occurring variations (e.g. polymorphisms), each with its own valid existence. This clone is substantially in agreement with the reference, but a complete review of all prevailing variants is recommended prior to use. [More info](#)

OTI Annotation: This clone was engineered to express the complete ORF with an expression tag. Expression varies depending on the nature of the gene.

Components: The ORF clone is ion-exchange column purified and shipped in a 2D barcoded Matrix tube containing 10ug of transfection-ready, dried plasmid DNA (reconstitute with 100 ul of water).

Reconstitution Method:

1. Centrifuge at 5,000xg for 5min.
2. Carefully open the tube and add 100ul of sterile water to dissolve the DNA.
3. Close the tube and incubate for 10 minutes at room temperature.
4. Briefly vortex the tube and then do a quick spin (less than 5000xg) to concentrate the liquid at the bottom.
5. Store the suspended plasmid at -20°C. The DNA is stable for at least one year from date of shipping when stored at -20°C.

Note: Plasmids are not sterile. For experiments where strict sterility is required, filtration with 0.22um filter is required.

RefSeq: [NM_002185.5](#)

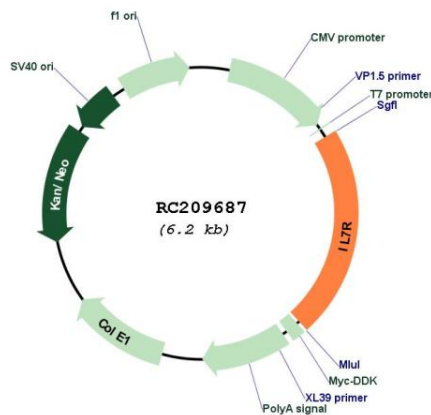
RefSeq Size: 4617 bp

RefSeq ORF: 1380 bp

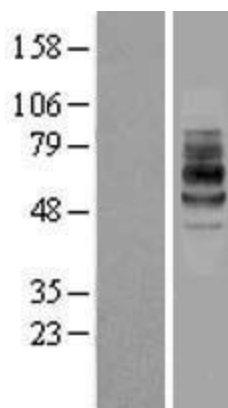
Locus ID: 3575

UniProt ID: [P16871](#)
Cytogenetics: 5p13.2
Protein Families: Druggable Genome, ES Cell Differentiation/IPS, Transmembrane
Protein Pathways: Cytokine-cytokine receptor interaction, Hematopoietic cell lineage, Jak-STAT signaling pathway, Primary immunodeficiency
MW: 51.6 kDa
Gene Summary: The protein encoded by this gene is a receptor for interleukin 7 (IL7). The function of this receptor requires the interleukin 2 receptor, gamma chain (IL2RG), which is a common gamma chain shared by the receptors of various cytokines, including interleukins 2, 4, 7, 9, and 15. This protein has been shown to play a critical role in V(D)J recombination during lymphocyte development. Defects in this gene may be associated with severe combined immunodeficiency (SCID). Alternatively spliced transcript variants have been found. [provided by RefSeq, Dec 2015]

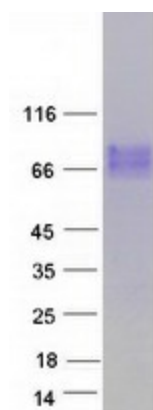
Product images:



Circular map for RC209687



Western blot validation of overexpression lysate (Cat# [LY400798]) using anti-DDK antibody (Cat# [TA50011-100]). Left: Cell lysates from untransfected HEK293T cells; Right: Cell lysates from HEK293T cells transfected with RC209687 using transfection reagent MegaTran 2.0 (Cat# [TT210002]).



Coomassie blue staining of purified IL7R protein (Cat# [TP309687]). The protein was produced from HEK293T cells transfected with IL7R cDNA clone (Cat# RC209687) using MegaTran 2.0 (Cat# [TT210002]).