

Product datasheet for RC209686

GPR4 (NM_005282) Human Tagged ORF Clone

Product data:

Product Type:	Expression Plasmids
Product Name:	GPR4 (NM_005282) Human Tagged ORF Clone
Tag:	Myc-DDK
Symbol:	GPR4
Synonyms:	GPR6C.I
Mammalian Cell Selection:	Neomycin
Vector:	pCMV6-Entry (PS100001)
E. coli Selection:	Kanamycin (25 ug/mL)
ORF Nucleotide Sequence:	>RC209686 ORF sequence Red=Cloning site Blue=ORF Green=Tags(s)

TTTTGTAATACGACTCACTATAGGGCGGCCGGAATTCGTCGACTGGATCCGGTACCGAGGAGATCTGCC
GCC**CGATCGCC**

ATGGGCAACCACAGTGGGAGGGCTGCCACGTGGACTCGCGCTGGACCACCTCTTTCGGCCATCCCTCT
ACATCTTTGTCATCGGCGTGGGGCTGCCACCAACTGCCTGGCTCTGTGGGCGCCTACCGCCAGGTGCA
ACAGCGCAACGAGCTGGGCGTCTACCTGATGAACCTCAGCATCGCCGACCTGCTGTACATCTGCACGCTG
CCGCTGTGGGTGGACTACTTCTGCACCACGACAAGTGGATCCACGGCCCCGGTCTGCAAGCTCTTTG
GGTTCATCTTCTACACCAATATCTACATCAGCATCGCCTTCTGTGCTGCATCTCGGTGGACCGCTACCT
GGCTGTGGCCACCCACTCCGCTTCGCCCGCTGCGTGCCTCAAGACCGCCGTGGCCGTGAGCTCCGTT
GTCTGGGCCACGGAGCTGGGCGCAACTCGGCGCCCTGTTCCATGACGAGCTCTTCGAGACCGCTACA
ACCACACCTTCTGCTTTGAGAAGTTCCCATGGAAGGCTGGTGGCTGGATGAACCTCTATCGGGTGT
CGTGGGCTTCTCTTCCCGTGGGCGCTCATGCTGCTGCTGCTACCGGGGCATCCTGCGGGCCGTGCGGGG
AGCGTGTCCACCGAGCGCCAGGAGAAGGCAAGATCAAGCGGCTGGCCCTCAGCCTCATCGCCATCGTGC
TGGTCTGCTTTGCGCCATCACGTGCTTGTGTGCCGAGCGCCATCCTGGGCGCCCTGGGA
CTGCGGCTTCGAGGAGCGCTCTTTCTGCATACCACAGCTCACTGGCTTTCACCAGCCTCAACTGTGTG
CGGACCCATCCTCTACTGCCTGGTCAACGAGGGCGCCCGCAGCGATGTGGCCAAGGCCCTGCACAACC
TGCTCCGCTTCTGGCCAGCGACAAGCCCCAGGAGATGGCCAATGCCTCGCTCACCTGGAGACCCCACT
CACCTCCAAGAGGAACAGCACAGCCAAAGCCATGACTGGCAGCTGGGCGGCCACTCCGCCCTCCAGGGG
GACCAGGTGCAGCTGAAGATGCTGCCGCCAGCACAA

ACGCGTACGCGGCCGCTCGAGCAGAACTCATCTCAGAAGAGGATCTGGCAGCAAATGATATCCTGGATT
ACAAGGATGACGACGATAAGGTTTAA



[View online »](#)

Protein Sequence: >RC209686 protein sequence
 Red=Cloning site Green=Tags(s)

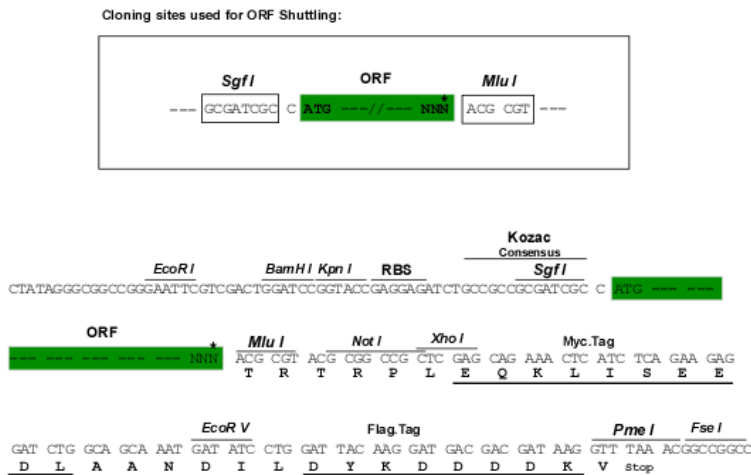
MGNHTWEGCHVDSRDHLPFPPSLYIFVIGVGLPTNCLALWAAAYRQVQRNELGVYLMNLSIADLLYICTL
 PLWVDYFLHHDNWIHGPGSCKLFGFIFYTNIYISIAFLCCISVDRYLAVAHPLRFARLRVCVTAVAVSSV
 VWATELGANSAPLFHDELFRDRYNHTFCFEKFPMEGWVWMMNL YRVFVGF LFPWALMLLSYRGILRAVRG
 SVSTERQEKAKIKRLALSLIAIVLVCFAPYHVLLLLSRSAIYLGRPWDCGFEERVF SAYHSSLAFTSLNCV
 ADPILYCLVNEGARSVDKALHNLLRFLASDKPQEMANASLTLETPLTSKRNSTAKAMTGSWAATPPSQG
 DQVQLKMLPPAQ

TRTRPLEQKLISEEDLAANDILDYKDDDDKV

Chromatograms: https://cdn.origene.com/chromatograms/mk6147_g01.zip

Restriction Sites: SgfI-MluI

Cloning Scheme:



* The last codon before the Stop codon of the ORF

ACCN: NM_005282

ORF Size: 1086 bp

OTI Disclaimer: The molecular sequence of this clone aligns with the gene accession number as a point of reference only. However, individual transcript sequences of the same gene can differ through naturally occurring variations (e.g. polymorphisms), each with its own valid existence. This clone is substantially in agreement with the reference, but a complete review of all prevailing variants is recommended prior to use. [More info](#)

OTI Annotation: This clone was engineered to express the complete ORF with an expression tag. Expression varies depending on the nature of the gene.

Components: The ORF clone is ion-exchange column purified and shipped in a 2D barcoded Matrix tube containing 10ug of transfection-ready, dried plasmid DNA (reconstitute with 100 ul of water).

Reconstitution Method:

1. Centrifuge at 5,000xg for 5min.
2. Carefully open the tube and add 100ul of sterile water to dissolve the DNA.
3. Close the tube and incubate for 10 minutes at room temperature.
4. Briefly vortex the tube and then do a quick spin (less than 5000xg) to concentrate the liquid at the bottom.
5. Store the suspended plasmid at -20°C. The DNA is stable for at least one year from date of shipping when stored at -20°C.

Note: Plasmids are not sterile. For experiments where strict sterility is required, filtration with 0.22um filter is required.

RefSeq: [NM_005282.3](#)

RefSeq Size: 3057 bp

RefSeq ORF: 1089 bp

Locus ID: 2828

UniProt ID: [P46093](#)

Cytogenetics: 19q13.32

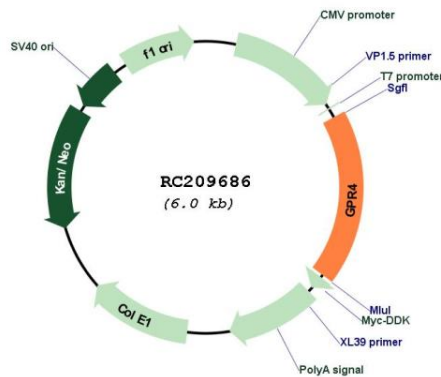
Domains: 7tm_1

Protein Families: Druggable Genome, GPCR, Transmembrane

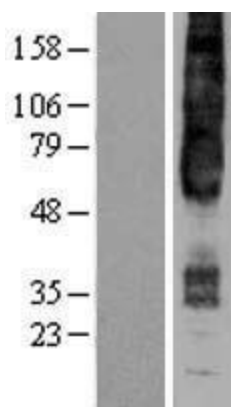
MW: 40.9 kDa

Gene Summary: Proton-sensing receptor coupled to several G-proteins, including G(s), G(13) and G(q)/G(11) proteins, leading to cAMP production.[UniProtKB/Swiss-Prot Function]

Product images:



Circular map for RC209686



Western blot validation of overexpression lysate (Cat# [LY401625]) using anti-DDK antibody (Cat# [TA50011-100]). Left: Cell lysates from untransfected HEK293T cells; Right: Cell lysates from HEK293T cells transfected with RC209686 using transfection reagent MegaTran 2.0 (Cat# [TT210002]).