

Product datasheet for **RC209683**

Grainyhead like protein 1 homolog (GRHL1) (NM_014552) Human Tagged ORF Clone

Product data:

Product Type:	Expression Plasmids
Product Name:	Grainyhead like protein 1 homolog (GRHL1) (NM_014552) Human Tagged ORF Clone
Tag:	Myc-DDK
Symbol:	GRHL1
Synonyms:	grainyhead-like 1 (Drosophila); LBP-32; LBP32; LBP protein 32; leader-binding protein 32; mammalian grainyhead; MGR; TFCP2L2; transcription factor CP2-like 2
Vector:	pCMV6-Entry (PS100001)
E. coli Selection:	Kanamycin (25 ug/mL)
Cell Selection:	Neomycin



[View online »](#)

ORF Nucleotide Sequence:

>RC209683 ORF sequence
 Red=Cloning site Blue=ORF Green=Tags(s)

TTTTGTAATACGACTCACTATAGGGCGGCCGGAATTCGTCGACTGGATCCGGTACCGAGGAGATCTGCC
 GCC**CGGATCGCC**

ATGACACAGGAGTACGACAACAAACGGCCAGTGTGGTTCTTCAGAATGAAGCACTTTATCCACAGCGGC
 GGTCTACACTAGTGAGGATGAGGCCTGGAATCCTTCCTGAAAAACCCTCACTGCAGCGACCAAAGC
 GATGATGAGCATCAATGGAGATGAAGACAGCGCCGCTGCCTGGCCCTGCTCTATGACTACTACAAGTT
 CCAAGAGAGAGAAGGTCAACAGCAAAGCCAGAGGTGGAGCACCCCTGAGCCAGATCACAGAAAAAGAA
 ACAGCATACCAATTGTGACAGAGCAGCCCTCATCTCTGCTGGAGAAAACAGAGTCAAGTACTGAAAA
 TGTGCCATTTAACATTGCTTCCCATGGCAACCAGCTGGGCATTGATAAGAGAGGCCATCTGACAGCT
 CCAGATACGACAGTCACTGTCTCCATAGCAACGATGCCTACCCACTCCATCAAGACAGAAACCCAGCCAC
 ATGGCTTCGCTGTGGGAATCCCCCAGCAGTGTATCATCTGAGCCCACTGAGCGGGTGGTGGTTTTCGA
 TCGGAATCTCAACTGACCAGTTCAGCTCTGGTCTCAAGCCCCAAATGCTCAAAGCGAACTCCAGAC
 TCGACCTTCTCAGAGACCTCAAGGAAGCGTTCAGGAGGTTTTCTTCCCTCGGATCTCAGTCTGCGGA
 TGCTGGCATGAATTCAGAGGACTATGTTTTGACAGTGTCTGGGAACAACCTTGAATATACCCTAGA
 AGCTTCAAATCACTTCGACAGAAGCCAGGAGACAGTACCATGACGTACCTGAACAAAGGCCAGTTCTAT
 CCCATCACCTGAAGGAGGTGAGCAGCAGTGAAGGAATCCATCATCCCATCAGCAAAGTTCGAAGTGTGA
 TCATGGTGGTTTTGCTGAAGACAAAAGCAGAGAAGATCAGTTAAGGCATTGGAAGTACTGGCACTCCCG
 GCAGCACACCGCTAAACAAAGATGCATTGACATAGCTGACTATAAAGAAAGCTTCAACACTATCAGTAAC
 GTCGAGGAGATTGCGTATAACGCCATTTCTTCCATGGGACATCAACGATGAAGCAAAGTTTTTCATCT
 CTGTGAAGTCTTAAGCACAGATTTCTCTTCCCAGAAGGAGTGAAGGGTTCCTTTAACATCAAAT
 TGATACCTATAGTTACAACAACCGCAGCAACAAGCCTGTGCACCGGGCTACTGCCAGATCAAGGCTTC
 TGTGACAAGGAGCTGAGCGGAAAAATCAGGGATGAAGAACGAAAGCAAAGCAAAGAAAAGTTTTCTGATG
 TAAAGTGCCACTGCTTCCCTCTCACAAGCAATGGATATCACAGTTTTCAAACCCTTATTGATCTCGA
 TACTCAGCCTGCTCTTCTTCTGACGTGCACTTTGCCAAGTGCAGCGGGGCACTCATGCTCTCC
 ATTGCCTCTGAAGAATTGGAGGGTGAAGGCTCTGTCTTGAAGGGGGCCGTACGGCACAGAAGTACT
 TTGCTGCTCCCTCTACCAAGCTGGCCGGATAGAAGAACAAAGAGAGTGTCTCTACGTTTCGAAA
 GGAGTCAGAAGAAGCTTTGATGCCCTGATGCTCAAACCCCATCTTTGAAGGGCTGATGAAGCTATC
 TCAGACAAATACGATGTTCCCATGACAAGATTGGGAAAATATCAAGAAGTGTAAAAGGGGATCTGG
 TGAACATGGACGACAACATTGTGAAGCATTACTCCAATGAGGACACCTCCAGCTGCAGATTGAAGAAGC
 CGGGGGTCTTACAAGCTCACCTGACGGAGATC

ACGCGTACGCGGCCGCTCGAGCAGAACTCATCTCAGAAGAGGATCTGGCAGCAAATGATATCCTGGATT
 ACAAGGATGACGACGATAAGGTTTAA

Protein Sequence:

>RC209683 protein sequence
 Red=Cloning site Green=Tags(s)

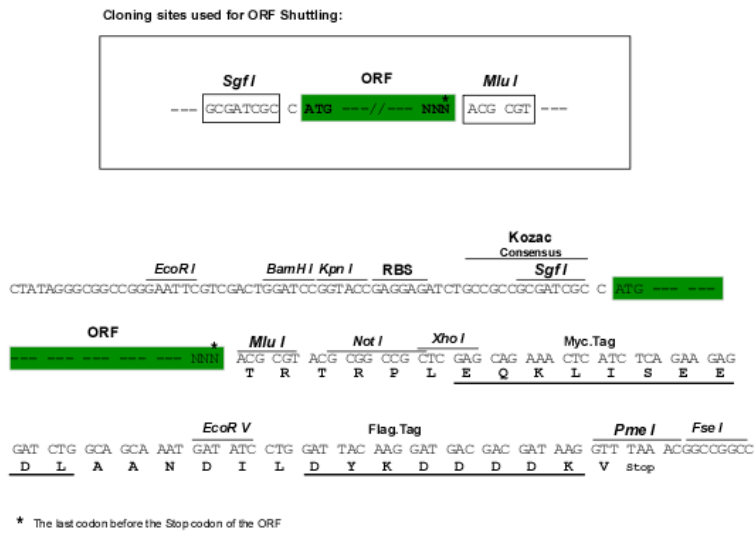
MTQEYDNKRPLV LQNEALYPQRRSYTSEDEAWKSFLNPLTAATKAMMSINGDEDSAAALGLLYDYKVP
 PRERRSSTAKPEVEHPEPDHRSKRNISPIVTEQPLISAGENRVQLKNVFNIVLPHGNQLGIDKRGHLTA
 PDDTTVTVSIATMPTHSIKTETQPHGFAVGIPPAVYHPEPTERVVVFDRNLNTDQFSSGAQAPNAQRRTPD
 STFSETFKQVQVFFPFDLRLRMPGMNSEDYVFDVSVGNNFYTLASLQKPGDSTMTYLNKGQFY
 PITLKEVSSSEGIHHPISKVRSVIMVVF AEDKSREDQLRHWKYWHSRQHTAKQRCIDIADYKESFNTISN
 VEEIAYNAISFTWDINDEAKVFI SVNCLSTDFSSQKGVKGLPLNIQIDTYSYNNRSNKPVHRAYCQIKVF
 CDKGAERKIRDEERKQSKRKVSDVKVPLLP SHKRM DITVFKPFI DLDTQPVLFI PDVHFANLQRGTHVLP
 IASEELEGEVSVLKRGPYGTEDDFAVPPSTKLARIEEPKRVLL YVRKESEEVFDALMLKTPSLKGLMEAI
 SDKYDVP HDKIGKIFKCKK GILVMDDNIVKHYSNEDTFQLQIEEAGGSYKLTLEI

TRTRPLEQKLISEEDLAANDILDYKDDDDKV

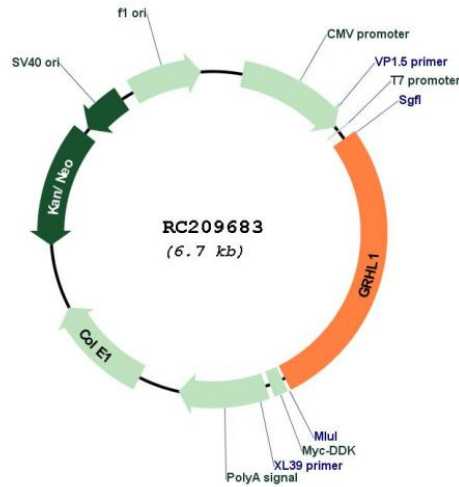
Chromatograms: https://cdn.origene.com/chromatograms/mk6198_f04.zip

Restriction Sites: SgfI-MluI

Cloning Scheme:



Plasmid Map:

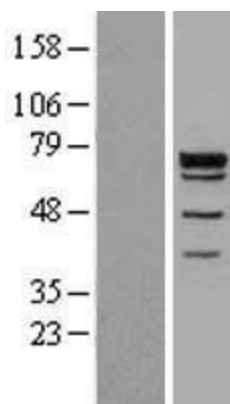


ACCN: NM_014552

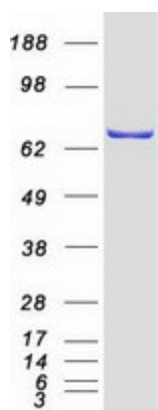
ORF Size: 1854 bp

OTI Disclaimer:	The molecular sequence of this clone aligns with the gene accession number as a point of reference only. However, individual transcript sequences of the same gene can differ through naturally occurring variations (e.g. polymorphisms), each with its own valid existence. This clone is substantially in agreement with the reference, but a complete review of all prevailing variants is recommended prior to use. More info
OTI Annotation:	This clone was engineered to express the complete ORF with an expression tag. Expression varies depending on the nature of the gene.
RefSeq:	NM_014552.2 , NP_055367.2
RefSeq Size:	3610 bp
RefSeq ORF:	1856 bp
Locus ID:	29841
Domains:	CP2
Protein Families:	Transcription Factors, Transmembrane
MW:	70.1 kDa
Gene Summary:	This gene encodes a member of the grainyhead family of transcription factors. The encoded protein can exist as a homodimer or can form heterodimers with sister-of-mammalian grainyhead or brother-of-mammalian grainyhead. This protein functions as a transcription factor during development. [provided by RefSeq, Jun 2009]

Product images:



Western blot validation of overexpression lysate (Cat# [LY432329]) using anti-DDK antibody (Cat# [TA50011-100]). Left: Cell lysates from untransfected HEK293T cells; Right: Cell lysates from HEK293T cells transfected with [RC229312] using transfection reagent MegaTran 2.0 (Cat# [TT210002]).



Coomassie blue staining of purified GRHL1 protein (Cat# [TP309683]). The protein was produced from HEK293T cells transfected with GRHL1 cDNA clone (Cat# RC209683) using MegaTran 2.0 (Cat# [TT210002]).