

## Product datasheet for RC209680

### IL23 (IL23A) (NM\_016584) Human Tagged ORF Clone

#### Product data:

**Product Type:** Expression Plasmids  
**Product Name:** IL23 (IL23A) (NM\_016584) Human Tagged ORF Clone  
**Tag:** Myc-DDK  
**Symbol:** IL23A  
**Synonyms:** IL-23; IL-23A; IL23P19; P19; SGRF  
**Vector:** pCMV6-Entry (PS100001)  
**E. coli Selection:** Kanamycin (25 ug/mL)  
**Cell Selection:** Neomycin  
**ORF Nucleotide Sequence:** >RC209680 ORF sequence  
Red=Cloning site Blue=ORF Green=Tags(s)

TTTTGTAATACGACTCACTATAGGGCGCCGGGAATTCGTCGACTGGATCCGGTACCGAGGAGATCTGCC  
GCC**CGATCGCC**

ATGCTGGGAGCAGAGCTGTAATGCTGCTGTTGCTGCTGCCCTGGACAGCTCAGGGCAGAGCTGTGCCTG  
GGGCAGCAGCCCTGCCTGGACTCAGTGCCAGCAGCTTTCACAGAAGCTCTGCACACTGGCTGGAGTGC  
ACATCCACTAGTGGGACACATGGATCTAAGAGAAGAGGGAGATGAAGAGACTACAATGATGTTCCCAT  
ATCCAGTGTGGAGATGGCTGTGACCCCCAAGACTCAGGGACAACAGTCAGTTCTGCTTGC AAAGGATCC  
ACCAGGTCTGATTTTTATGAGAAGCTGCTAGGATCGGATATTTTCACAGGGGAGCCTTCTCTGCTCCC  
TGATAGCCCTGTGGCCAGCTTCATGCCTCCCTACTGGGCCTCAGCCAACCTCCTGCAGCCTGAGGGTCA  
CACTGGGAGACTCAGCAGATGCCAAGCCTCAGTCCCAGCCAGCCATGGCAGCGTCTCCTTCTCCGTTCA  
AAATCCTTCGCAACCTCCAGGCCTTTGTGGCTGTAGCCGCCCGGGTCTTTGCCCATGGAGCAGCAACCT  
GAGTCCC

**ACGCGT**ACGCGGCCGCTCGAGCAGAACTCATCTCAGAAGAGGATCTGGCAGCAAATGATATCCTGGATT  
ACAAGGATGACGACGATAAGGTTTAA

**Protein Sequence:** >RC209680 protein sequence  
Red=Cloning site Green=Tags(s)

MLGSRVMLLLLLPWT AQGRAVPGGSSPAWTQCQQLS QKLCTLAWSAHPLVGHMDLREEGDEETTNDVPH  
IQCGDGDQPQLRDNSQFCLQR IHQGLIFYEKLLGSDIFTGEP SLLPDS PVGQLHASLLGLS QLLQPEGH  
HWETQQMPSLSPSQPWQRLLLRFKILRN LQAFVAVAAARVFAHGAATLSP

**TR**TRPLEQKLISEEDLAANDILDYKDDDDKV

**Chromatograms:** [https://cdn.origene.com/chromatograms/mk6142\\_d05.zip](https://cdn.origene.com/chromatograms/mk6142_d05.zip)



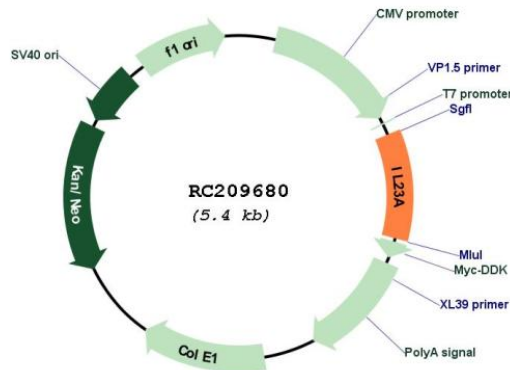
View online »

Restriction Sites: SgfI-MluI

Cloning Scheme:



Plasmid Map:



ACCN: NM\_016584

ORF Size: 567 bp

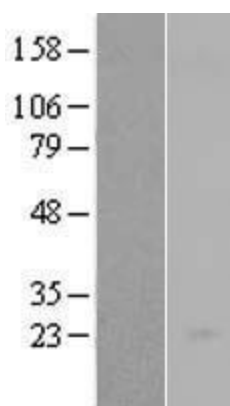
OTI Disclaimer: The molecular sequence of this clone aligns with the gene accession number as a point of reference only. However, individual transcript sequences of the same gene can differ through naturally occurring variations (e.g. polymorphisms), each with its own valid existence. This clone is substantially in agreement with the reference, but a complete review of all prevailing variants is recommended prior to use. [More info](#)

OTI Annotation: This clone was engineered to express the complete ORF with an expression tag. Expression varies depending on the nature of the gene.

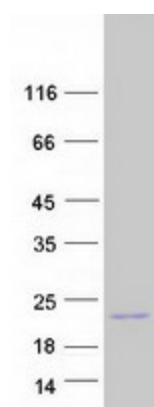
RefSeq: [NM\\_016584.1](#), [NM\\_016584.2](#), [NP\\_057668.1](#)

RefSeq Size:	1049 bp
RefSeq ORF:	570 bp
Locus ID:	51561
Protein Families:	Druggable Genome, Secreted Protein
Protein Pathways:	Cytokine-cytokine receptor interaction, Jak-STAT signaling pathway
MW:	20.8 kDa
Gene Summary:	This gene encodes a subunit of the heterodimeric cytokine interleukin 23 (IL23). IL23 is composed of this protein and the p40 subunit of interleukin 12 (IL12B). The receptor of IL23 is formed by the beta 1 subunit of IL12 (IL12RB1) and an IL23 specific subunit, IL23R. Both IL23 and IL12 can activate the transcription activator STAT4, and stimulate the production of interferon-gamma (IFNG). In contrast to IL12, which acts mainly on naive CD4(+) T cells, IL23 preferentially acts on memory CD4(+) T cells. [provided by RefSeq, Jul 2008]

### Product images:



Western blot validation of overexpression lysate (Cat# [LY402570]) using anti-DDK antibody (Cat# [TA50011-100]). Left: Cell lysates from untransfected HEK293T cells; Right: Cell lysates from HEK293T cells transfected with RC209680 using transfection reagent MegaTran 2.0 (Cat# [TT210002]).



Coomassie blue staining of purified IL23A protein (Cat# [TP309680]). The protein was produced from HEK293T cells transfected with IL23A cDNA clone (Cat# RC209680) using MegaTran 2.0 (Cat# [TT210002]).