

## Product datasheet for RC209676

### C5L2 (C5AR2) (NM\_018485) Human Tagged ORF Clone

#### Product data:

Product Type:	Expression Plasmids
Product Name:	C5L2 (C5AR2) (NM_018485) Human Tagged ORF Clone
Tag:	Myc-DDK
Symbol:	C5L2
Synonyms:	C5L2; GPF77; GPR77
Mammalian Cell Selection:	Neomycin
Vector:	pCMV6-Entry (PS100001)
E. coli Selection:	Kanamycin (25 ug/mL)
ORF Nucleotide Sequence:	>RC209676 ORF sequence Red=Cloning site Blue=ORF Green=Tags(s)

TTTTGTAATACGACTCACTATAGGGCGGCCGGAATTCGTCGACTGGATCCGGTACCGAGGAGATCTGCC  
GCCCGCATCGCC

ATGGGGAACGATTCTGTCTCAGCTACGAGTATGGGGATTACAGCGACCTCTCGGACCGCCCTGTGGACTGCC  
TGGATGGCGCCTGCCTGGCCATCGACCCGCTGCGCGTGGCCCCGCTCCCCTGTATGCCGCCATCTTCT  
GGTGGGGTGGCGGCAATGCCATGGTGGCCTGGGTGGCTGGGAAGGTGGCCCGCGAGGGTGGGTGCC  
ACCTGGTTGCTCCACCTGGCCGTGGCGGATTTGCTGTGCTGTTTGTCTCTGCCCATCCTGGCAGTGCCCA  
TTGCCCGTGGAGGCCACTGGCCGTATGGTGCAGTGGGCTGTGGGCGCTGCCCTCCATCATCCTGTCTGAC  
CATGTATGCCAGCGTCTGCTCCTGGCAGCTCTCAGTACCGACCTCTGCTTCTGGCTCTCGGGCCTGCC  
TGGTGGTCTACGGTTCAGCGGGCGTGGCGGGTGCAGGTGGCTGTGGGGCAGCCTGGACACTGGCCTTGC  
TGCTCACCGTGGCCCTCCGCCATCTACCGCCGGCTGCACCAGGAGCACTCCAGCCCGGCTGCAGTGTGT  
GGTGGACTACGGCGGCTCCTCCAGCACCAGAAATGCGGTGACTGCCATCCGGTTTCTTTTGGCTTCTGT  
GGGCCCTGGTGGCCGTGGTCACTGCCACAGTGGCCCTCTGTCTGGGAGCCCGACGCTGCCGGCCGC  
TGGGCACAGCCATTGTGGTGGGGTTTTTGTCTGCTGGGACCCCTACCACCTGCTGGGCTGGTGTCTCAC  
TGTGGCGGCCCGAACTCCGACTCCTGGCCAGGGCCCTGGGGCTGAACCCCTCATCGTGGGCTTGGC  
CTCGCTCACAGCTGCCTCAATCCATGCTTCTTCTGATTTTGGGAGGGCTCAACTCCGCGGCTCACTGC  
CAGCTGCCTGTCACTGGGCCCTGAGGGAGTCCAGGGCCAGGACGAAAGTGTGGACAGCAAGAAATCCAC  
CAGCCATGACCTGGTCTCGGAGATGGAGGTG

ACGCGTACGCGGCCGCTCGAGCAGAACTCATCTCAGAAGAGGATCTGGCAGCAATGATATCCTGGATT  
ACAAGGATGACGACGATAAGGTTTAA



[View online »](#)



**Reconstitution Method:**

1. Centrifuge at 5,000xg for 5min.
2. Carefully open the tube and add 100ul of sterile water to dissolve the DNA.
3. Close the tube and incubate for 10 minutes at room temperature.
4. Briefly vortex the tube and then do a quick spin (less than 5000xg) to concentrate the liquid at the bottom.
5. Store the suspended plasmid at -20°C. The DNA is stable for at least one year from date of shipping when stored at -20°C.

**RefSeq:** [NM\\_018485.3](#)

**RefSeq Size:** 1396 bp

**RefSeq ORF:** 1014 bp

**Locus ID:** 27202

**UniProt ID:** [Q9P296](#)

**Cytogenetics:** 19q13.32

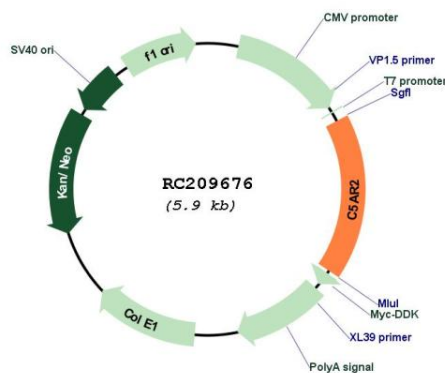
**Domains:** 7tm\_1

**Protein Families:** Druggable Genome, GPCR, Transmembrane

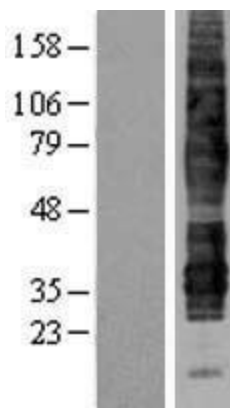
**MW:** 36.1 kDa

**Gene Summary:** This gene encodes a G-protein coupled receptor 1 family member involved in the complement system of the innate immune response. Unlike classical G-protein coupled receptors, the encoded protein does not associate with intracellular G-proteins. It may instead modulate signal transduction through the beta-arrestin pathway, and may alternatively act as a decoy receptor. This gene may be involved in coronary artery disease and in the pathogenesis of sepsis. Alternative splicing results in multiple transcript variants. [provided by RefSeq, Nov 2012]

### Product images:



Circular map for RC209676



Western blot validation of overexpression lysate (Cat# [LY402691]) using anti-DDK antibody (Cat# [TA50011-100]). Left: Cell lysates from untransfected HEK293T cells; Right: Cell lysates from HEK293T cells transfected with RC209676 using transfection reagent MegaTran 2.0 (Cat# [TT210002]).