

Product datasheet for **RC209675**

GPR75 (NM_006794) Human Tagged ORF Clone

Product data:

Product Type:	Expression Plasmids
Product Name:	GPR75 (NM_006794) Human Tagged ORF Clone
Tag:	Myc-DDK
Symbol:	GPR75
Synonyms:	GPRchr2; WI31133
Mammalian Cell Selection:	Neomycin
Vector:	pCMV6-Entry (PS100001)
E. coli Selection:	Kanamycin (25 ug/mL)



[View online »](#)

ORF Nucleotide Sequence:

>RC209675 ORF sequence
 Red=Cloning site Blue=ORF Green=Tags(s)

TTTTGTAATACGACTCACTATAGGGCGGCCGGGAATTCGTCGACTGGATCCGGTACCGAGGAGATCTGCC
 GCC**CGGATCGCC**

ATGAACTCAACAGGCCACCTTCAGGATGCCCCCAATGCCACCTCGCTCCATGTGCCTCACTCACAGGAAG
 GAAACAGCACCTCTCCAGGAGGGTCTTCAGGATCTCATCCACACAGCCACCTTGGTGACTGTACTTT
 TCTACTGGCGGCATCTTCTGCCTGGGTTCTATGGCAACTTCATTGTCTTCTTGTCTTCTTCGATCCA
 GCCTTCAGGAAATTCAGAACCACTTTGATTTTCATGATCCTGAACCTGTCTTCTGTGACCTCTTCATTT
 GTGGAGTGACAGCCCCATGTTACCTTTGTGTTATTCTTCAGCTCAGCCAGTAGTATCCCGGATGCTTT
 CTGCTTCACTTTCCATCTCACCAGTTCAGGCTTCATCATGTCTCTGAAGACAGTGGCAGTGATCGCC
 CTGCACCCGGTCCGGATGGTGTGGGAAACAGCCTAATCGCACGGCTCCTTTCCCTGCACCGTACTCC
 TCACCTGCTTCTGGGCCACCAGTTTACCCTGCCACCTGGCTACCTTGAACCAGCAAGTCCCA
 CCTCTGTCTTCCATGTCCAGTCTGATTGCTGGAAAAGGAAAGCCATTTGTCTCTATGTGGTGCAG
 TTCACCTTCTGTGTTGCTGTGGTCTGTCTCTTACATCATGATTGCTCAGACCCCTGCGGAAGAAGCTC
 AAGTCAGAAAGTGCCCCCTGTAATCACAGTCGATGCTTCCAGACCACAGCCTTTCATGGGGTCCCTGT
 GCAGGGAGGTGGAGATCCCATCCAGTGTCCATGCCGGCTCTGTATAGGAACCAGAATTACGACAAACTG
 CAGCACGTTCCAGACCCGTGGATATACCAAGAGTCCCAACCAACTGGTCACCCCTGCAGCAAGCCGACTCC
 AGCTCGTATCAGCCATCAACCTCTCCACTGCCAAGGATTCAAAGCCGTGGTCACCTGTGTGATCATTGT
 GCTGTCACTCTTACCAGTTTGAATTGTTGGATTACTCTTATATTTTTCAAGTCAGGATTAACCCCTT
 TTATATATCTCGGAACAGTGCAGGGCTGAGAAGGAAAGTGCTCTGGTGCCTCCAATACATAGCCCTGGG
 TTTTTCTGCTGCAAAACAAAGACTCGACTTCGAGCCATGGGAAAAGGGAACCTCGAAGTCAACAGAAAC
 AAATCCTCCCATCATGAAACAACTCTGCCTACATGTTATCTCCAAGCCACAGAAGAAATTTGTGGACC
 AGGCTTGTGGCCAAGTCATTCAAAGAAAGTATGGTGTGAGTCCCAAGATCTCTGTGGACATCAACACTG
 TGGTCAGAGCAGCTCGACCCCATCAACACTCGGATTGAACCTTACTACAGCATCTATAACAGCAGCCCT
 TCCCAGGAGGAGCAGCCCATGAACTTACAGCCAGTAACTCTTTGGATTGGCAATTCATATATTG
 CCATGCATTATCACACCACTAATGACTTAGTGCAGGAATATGACAGCACTTCAGCCAAGCAGATTCCAGT
 CCCCTCCGTT

ACGCGTACGCGGCCGCTCGAGCAGAAACTCATCTCAGAAGAGGATCTGGCAGCAAATGATATCCTGGATT
 ACAAGGATGACGACGATAAGGTTTAA

Protein Sequence:

>RC209675 protein sequence
 Red=Cloning site Green=Tags(s)

MNSTGHLQDAPNATSLHVPHSQEGNSTSLQEGLQDLIHTATLVCTFLLAVIFCLGSYGNFIVFLSFFDP
 AFRKFRTNDFMILNLSFCDLFICGVTAPMFTFVLFSSASSIPDAFCFTFHLTSSGFIIMSLKTVAVIA
 LHRLRMVLGKQPNRTASFPCTVLLTLLWATSFTPATLATLTKSKSHLCLPMSLIAGKGKAILSLYVVD
 FTFCVAVVSYSYIMIAQTLRKNAQVRKCPPVITVDASRPQPFMGVVPVQGGDPIQCAMPALYRNQNYDKL
 QHVQTRGYTKSPNQLVTPAASRLQLVSAINLSTAKDSKAVVTCVIVLSVLVCLPLGISLVQVVLSSNG
 SFILYQFELFGFTLIFFKSGLNPFYISRNSAGLRRKVLWCLQYIGLGFCKQKTRLRAMGKGNLEVNRN
 KSSHHTNSAYMLSPKPQKQKFDQACGPSHSKESMVSPKISAGHQHCGQSSSTPINTRIEPYYSIYNSSP
 SQEESSPCNLQPVNSFGFANSYIAMHYHTNDLVQEYDSTSAKQIPVPSV

TRTRPLEQKLISEEDLAANDILDYKDDDDKV

Chromatograms:

https://cdn.origene.com/chromatograms/mk6087_g06.zip

Restriction Sites:

Sgfl-Mlul

Cloning Scheme:

ACCN: NM_006794

ORF Size: 1620 bp

OTI Disclaimer: Due to the inherent nature of this plasmid, standard methods to replicate additional amounts of DNA in E. coli are highly likely to result in mutations and/or rearrangements. Therefore, OriGene does not guarantee the capability to replicate this plasmid DNA. Additional amounts of DNA can be purchased from OriGene with batch-specific, full-sequence verification at a reduced cost. Please contact our customer care team at custsupport@origene.com or by calling 301.340.3188 option 3 for pricing and delivery.

The molecular sequence of this clone aligns with the gene accession number as a point of reference only. However, individual transcript sequences of the same gene can differ through naturally occurring variations (e.g. polymorphisms), each with its own valid existence. This clone is substantially in agreement with the reference, but a complete review of all prevailing variants is recommended prior to use. [More info](#)

OTI Annotation: This clone was engineered to express the complete ORF with an expression tag. Expression varies depending on the nature of the gene.

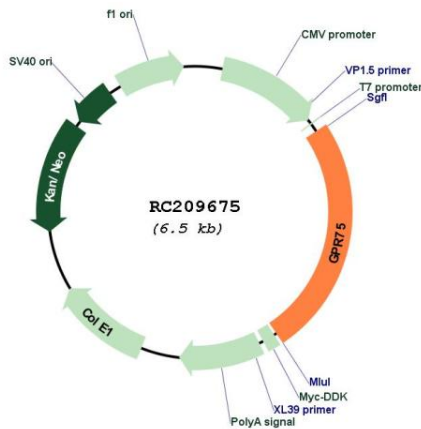
Components: The ORF clone is ion-exchange column purified and shipped in a 2D barcoded Matrix tube containing 10ug of transfection-ready, dried plasmid DNA (reconstitute with 100 ul of water).

- Reconstitution Method:**
1. Centrifuge at 5,000xg for 5min.
 2. Carefully open the tube and add 100ul of sterile water to dissolve the DNA.
 3. Close the tube and incubate for 10 minutes at room temperature.
 4. Briefly vortex the tube and then do a quick spin (less than 5000xg) to concentrate the liquid at the bottom.
 5. Store the suspended plasmid at -20°C. The DNA is stable for at least one year from date of shipping when stored at -20°C.

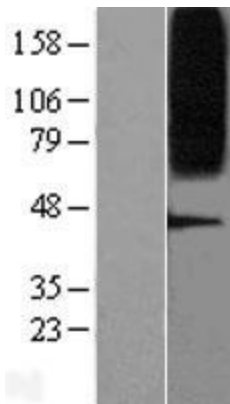
RefSeq: [NM_006794.4](#)

RefSeq Size:	2159 bp
RefSeq ORF:	1623 bp
Locus ID:	10936
UniProt ID:	<u>O95800</u>
Cytogenetics:	2p16.2
Domains:	7tm_1
Protein Families:	Druggable Genome, GPCR, Transmembrane
MW:	59.3 kDa
Gene Summary:	GPR75 is a member of the G protein-coupled receptor family. GPRs are cell surface receptors that activate guanine-nucleotide binding proteins upon the binding of a ligand.[supplied by OMIM, Jul 2002]

Product images:



Circular map for RC209675



Western blot validation of overexpression lysate (Cat# [LY416418]) using anti-DDK antibody (Cat# [TA50011-100]). Left: Cell lysates from untransfected HEK293T cells; Right: Cell lysates from HEK293T cells transfected with RC209675 using transfection reagent MegaTran 2.0 (Cat# [TT210002]).