

Product datasheet for **RC209674**

GPR83 (NM_016540) Human Tagged ORF Clone

Product data:

Product Type:	Expression Plasmids
Product Name:	GPR83 (NM_016540) Human Tagged ORF Clone
Tag:	Myc-DDK
Symbol:	GPR83
Synonyms:	GIR; GPR72
Mammalian Cell Selection:	Neomycin
Vector:	pCMV6-Entry (PS100001)
E. coli Selection:	Kanamycin (25 ug/mL)



[View online »](#)

ORF Nucleotide Sequence:

>RC209674 ORF sequence
 Red=Cloning site Blue=ORF Green=Tags(s)

TTTTGTAATACGACTCACTATAGGGCGGCCGGAATTCGTCGACTGGATCCGGTACCGAGGAGATCTGCC
 GCC**CGGATCGCC**

ATGGTCCCTCACCTCTTGCTGCTGTCTCCTCCCTTGGTGCAGCCACCGAGCCACGAGGGCCGGG
 CCGACGAGCAGAGCGGAGGCGCCCTGGCCGTGCCAATGCCTCGCACTTCTTCTTGGAACTA
 CACCTTCTCCGACTGGCAGAAGTTGTGGGAGGAGGCGTACGGCGCTGAGTCCCAGAACCCACGGT
 AAAGCCCTGCTCATTGTGGCTTACTCCTTCATCATTGTCTTCTCACTCTTGGCAACGCTCGTGTGTC
 ATGTCATCTTCAAGAACCAGCGAATGCACTCGGCCACCAGCCTTTCATCGTCAACCTGGCAGTTGCCGA
 CATAATGATCACGCTGCTCAACACCCCTTCACTTTGGTTCGCTTGTGAACAGCACATGGATATTTGGG
 AAGGGCATGTGCCATGTCAGCCGCTTGGCCAGTACTGCTCACTGCACGTCTCAGCACTGACACTGACAG
 CCATTGCGGTGGATCGCCACCAGGTCATCATGCACCCCTTGAACCCCGGATCTCAATCACAAAGGGTGT
 CATCTACATCGCTGCTCATCTGGACCATGGCTACGTTCTTTCACTCCACATGCTATCTGCCAGAAATTA
 TTTACCTTCAAATACAGTGAGGACATTGTGCGCTCCCTCTGCCTGCCAGACTTCCCTGAGCCAGCTGACC
 TCTTCTGGAAGTACCTGGACTTGGCCACCTTCATCCTGCTCTACATCCTGCCCTCCTCATCTCTGT
 GGCTACGCTCGTGTGGCAAGAACTGTGGCTGTGTAATATGATTGGCGATGTGACCACAGAGCAGTAC
 TTTGCCCTGCGGCGCAAAAAGAAGACCATCAAGATGTTGATGCTGGTGGTAGTCTCTTTGCCCTCT
 GCTGGTCCCCCTCAACTGCTACGTCCTCCTCTGTCCAGCAAGGTCATCCGCACCAACAATGCCCTCTA
 CTTTGCCTTCCACTGGTTTGGCATGAGCAGCACCTGCTATAACCCCTTCATATACTGCTGGCTGAACGAG
 AACTTCAGGATTGAGCTAAAGGCATTACTGAGCATGTGTCAAAGACCTCCAAGCCTCAGGAGGACAGGC
 CACCCTCCCAGTTCCTTCCCTTCCAGGTTGGCCTGGACAGAGAAGAATGATGGCCAGAGGGCCCCCTTGC
 CAATAACCTCCTGCCACCTCCCAACTCCAGTCTGGGAAGACAGACCTGTATCTGTGGAACCCATTGTG
 ACGATGAGT

ACGCGTACGCGGCCGCTCGAGCAGAACTCATCTCAGAAGAGGATCTGGCAGCAATGATATCCTGGATT
 ACAAGGATGACGACGATAAGGTTTAA

Protein Sequence:

>RC209674 protein sequence
 Red=Cloning site Green=Tags(s)

MVPHLLLLLCLLPLVRATEPHEGRADEQSAEALAVPNASHFFSWNNYTFSDWQNFVGRRRYGAESQNPTV
 KALLIVAYSFIIIVFSLFGNVLVCHVIFKNQRMHSATSLFIVNLAVADIMITLLNTPFTLVRVFNSTWIFG
 KGMCHVSRFAQYCSLHVSALTLTAIAVDRHQVIMHPLKPRISITKGVIIYIAVIWTMATFFSLPHAICQKL
 FTFKYSIEDIVRSLCLPDFPEPADLFWKYLDLTFILLYILPLLIISVAYARVAKKLWLCNMIGDVTTEQY
 FALRRKKKTIKMLMLVVVLFALCWPLNCYVLLLSKVIRTNNALYFAHWFAMSSTCYNPFIYCWLNE
 NFRIELKALLSMCQRPPKQEDRPPSPVPSFRVAWTEKNDGQRAPLANNLLPTSQQLQSGKTDLSSVEPIV
 TMS

TRTRPLEQKLISEEDLAANDILDYKDDDDKV

Chromatograms:

https://cdn.origene.com/chromatograms/mk6147_g09.zip

Restriction Sites:

Sgfl-Mlul

Cloning Scheme:


ACCN: NM_016540

ORF Size: 1269 bp

OTI Disclaimer: The molecular sequence of this clone aligns with the gene accession number as a point of reference only. However, individual transcript sequences of the same gene can differ through naturally occurring variations (e.g. polymorphisms), each with its own valid existence. This clone is substantially in agreement with the reference, but a complete review of all prevailing variants is recommended prior to use. [More info](#)

OTI Annotation: This clone was engineered to express the complete ORF with an expression tag. Expression varies depending on the nature of the gene.

Components: The ORF clone is ion-exchange column purified and shipped in a 2D barcoded Matrix tube containing 10ug of transfection-ready, dried plasmid DNA (reconstitute with 100 ul of water).

Reconstitution Method:

1. Centrifuge at 5,000xg for 5min.
2. Carefully open the tube and add 100ul of sterile water to dissolve the DNA.
3. Close the tube and incubate for 10 minutes at room temperature.
4. Briefly vortex the tube and then do a quick spin (less than 5000xg) to concentrate the liquid at the bottom.
5. Store the suspended plasmid at -20°C. The DNA is stable for at least one year from date of shipping when stored at -20°C.

RefSeq: [NM_016540.4](#)

RefSeq Size: 4300 bp

RefSeq ORF: 1272 bp

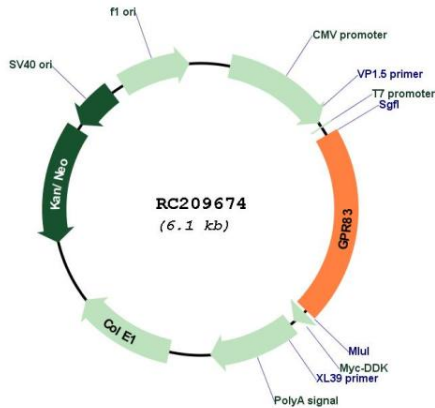
Locus ID: 10888

UniProt ID: [Q9NYM4](#)

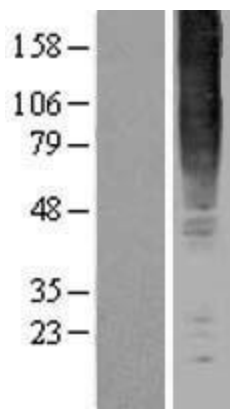
Cytogenetics: 11q21

Protein Families: Druggable Genome, GPCR, Transmembrane
Protein Pathways: Neuroactive ligand-receptor interaction
MW: 48.3 kDa
Gene Summary: Orphan receptor. Could be a neuropeptide Y receptor.[UniProtKB/Swiss-Prot Function]

Product images:



Circular map for RC209674



Western blot validation of overexpression lysate (Cat# [LY402564]) using anti-DDK antibody (Cat# [TA50011-100]). Left: Cell lysates from untransfected HEK293T cells; Right: Cell lysates from HEK293T cells transfected with RC209674 using transfection reagent MegaTran 2.0 (Cat# [TT210002]).