

Product datasheet for **RC209672**

GPR61 (NM_031936) Human Tagged ORF Clone

Product data:

Product Type:	Expression Plasmids
Product Name:	GPR61 (NM_031936) Human Tagged ORF Clone
Tag:	Myc-DDK
Symbol:	GPR61
Synonyms:	BALGR; GPCR3
Mammalian Cell Selection:	Neomycin
Vector:	pCMV6-Entry (PS100001)
E. coli Selection:	Kanamycin (25 ug/mL)



[View online »](#)

ORF Nucleotide Sequence:

>RC209672 ORF sequence
 Red=Cloning site Blue=ORF Green=Tags(s)

TTTTGTAATACGACTCACTATAGGGCGGCCGGAATTCGTCGACTGGATCCGGTACCGAGGAGATCTGCC
 GCC**CGATCGCC**

ATGGAGTCTCACCCATCCCCAGTCATCAGGGAAGTCTTCCACTTTGGGAGGGTCCCTCAAACCCAG
 GTCCTCTACTGCCAGTGGGGTCCCGAGGTGGGGCTACGGGATGTTGCTTCGGAATCTGTGCCCTCTT
 TTCATGCTCCTGCTGGACTTGACTGCTGTGGCTGGCAATGCCGCTGTGATGGCCGTGATCGCCAAGACG
 CCTGCCCTCCGAAAATTTGCTTCGCTTCCACCTCTGCCTGGTGGACCTGCTGGCTGCCCTGACCTCA
 TGCCCTGGCCATGCTCTCCAGCTCTGCCCTCTTTGACCAGCCCTCTTTGGGAGGTGGCTGCCGCT
 CTACTTGTTCGAGCGTGTGCTTTGTCAGCCTGGCCATCCTCTCGGTGTCAGCCATCAATGTGGAGCGC
 TACTATTACGTAGTCCACCCATGCGCTACGAGGTGCGCATGACGCTGGGGCTGGTGGCCTCTGTGCTGG
 TGGGTGTGTGGTGAAGGCTTGGCCATGGCTTCTGTGCCAGTGTGGGAAGGTCTCCTGGGAGGAAGG
 AGCTCCAGTGTCCCCAGGCTGTTCACTCCAGTGGAGCCACAGTGCCTACTGCCAGCTTTTTGTGGTG
 GCTTTGCTGTCTTTACTTTCTGTTGCCCTGCTCCTCATACTTGTGGTCTACTGCAGCATGTTCCGAG
 TGGCCCGCTGGCTGCCATGCAGCACGGGCCGCTGCCACGTGGATGGAGACACCCCGGCAACGCTCCGA
 ATCTCTCAGCAGCCGCTCCACGATGGTCACCAGCTCGGGGGCCCCCAGACCACCCACACCGGACGTTT
 GGGGGAGGGAAAGCAGCAGTGGTTCCTCGGCTGTGGGGGACAGTTCCTGCTCTGTTGGTTGCCCTACT
 TCTCTTTCCACCTCTATGTTGCCTGAGTGTCTAGCCATTCAACTGGGAGGTGGAGAGTGTGGTCCAC
 CTGGATTGGCTACTTTTGCTTCACTTCCAACCTTTCTTCTATGGATGTCTAACCGGCAGATCCGGGGG
 GAGCTCAGCAAGCAGTTTGTCTGCTTCTCAAGCCAGCTCCAGAGAAGGAGCTGAGGCTGCCTAGCCGGG
 AGGGCTCATTGAGGAGAACTTCTGCAGTTCCTCAGGGGACTGGCTGTCTTCTGAGTCTGGGTTTC
 CCGACCCTACCCAGCCCAAGCAGGAGCCACCTGCTGTTGACTTTCGAATCCCAGGCCAGATAGCTGAG
 GAGACCTCTGAGTTCCTGGAGCAGCAACTCACCAGCGACATCATCATGTGACAGCTACCTCCGTCCTG
 CCGCCTACCCCGGCTGGAGTCA

ACGCGTACGCGGCCGCTCGAGCAGAACTCATCTCAGAAGAGGATCTGGCAGCAAATGATATCCTGGATT
 ACAAGGATGACGACGATAAGGTTTAA

Protein Sequence:

>RC209672 protein sequence
 Red=Cloning site Green=Tags(s)

MESSPIPQSSGNSSTLGRVPQTPGPSTASGVPEVGLRDVASESVALFFMLLLDLTAVAGNAAMVAIAKT
 PALRKFFVVFHLCLVDLLAALTLMLPLMLSSSALFDHALFGEVACRLYLFLSVCFVSLAILSVSAINVER
 YYYVHVPMRYEVRMTLGLVASVLVGWVKALAMASVPLGRVSWEEGAPSVPPGCSLQWSHSAYCQLFVV
 VFAVLYFLLPLLLILVYCSMFRVARVAAMQHGPLPTWMETPRQRSELSRSTMTVSSGAPQTTPHRTF
 GGGKAAVVLLAVGGQFLLCWLPHYFSFHLVVALSAQPISTGQVESVVTWIGYFCFTSNPFFYGCLNRQIRG
 ELSKQFVCFKPAPEKELRLPSREGSIEENFLQFLQGTGCPSESWVRPLPSPKQEPVAVDFRIPGQIAE
 ETSEFLEQLTSDIIMSDSYLRPAASPRLES

TRTRPLEQKLISEEDLAANDILDYKDDDDKV

Chromatograms:

https://cdn.origene.com/chromatograms/mk6545_b09.zip

Restriction Sites:

Sgfl-Mlul

Cloning Scheme:


ACCN: NM_031936

ORF Size: 1353 bp

OTI Disclaimer: Due to the inherent nature of this plasmid, standard methods to replicate additional amounts of DNA in E. coli are highly likely to result in mutations and/or rearrangements. Therefore, OriGene does not guarantee the capability to replicate this plasmid DNA. Additional amounts of DNA can be purchased from OriGene with batch-specific, full-sequence verification at a reduced cost. Please contact our customer care team at custsupport@origene.com or by calling 301.340.3188 option 3 for pricing and delivery.

The molecular sequence of this clone aligns with the gene accession number as a point of reference only. However, individual transcript sequences of the same gene can differ through naturally occurring variations (e.g. polymorphisms), each with its own valid existence. This clone is substantially in agreement with the reference, but a complete review of all prevailing variants is recommended prior to use. [More info](#)

OTI Annotation: This clone was engineered to express the complete ORF with an expression tag. Expression varies depending on the nature of the gene.

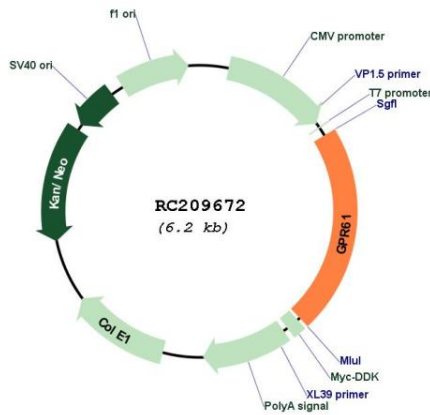
Components: The ORF clone is ion-exchange column purified and shipped in a 2D barcoded Matrix tube containing 10ug of transfection-ready, dried plasmid DNA (reconstitute with 100 ul of water).

- Reconstitution Method:**
1. Centrifuge at 5,000xg for 5min.
 2. Carefully open the tube and add 100ul of sterile water to dissolve the DNA.
 3. Close the tube and incubate for 10 minutes at room temperature.
 4. Briefly vortex the tube and then do a quick spin (less than 5000xg) to concentrate the liquid at the bottom.
 5. Store the suspended plasmid at -20°C. The DNA is stable for at least one year from date of shipping when stored at -20°C.

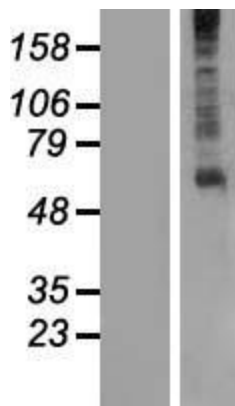
RefSeq: [NM_031936.5](#)
RefSeq Size: 2823 bp
RefSeq ORF: 1356 bp
Locus ID: 83873
UniProt ID: [Q9BZJ8](#)
Cytogenetics: 1p13.3
Protein Families: Druggable Genome, GPCR, Transmembrane
MW: 49.3 kDa

Gene Summary: This gene belongs to the G-protein coupled receptor 1 family. G protein-coupled receptors contain 7 transmembrane domains and transduce extracellular signals through heterotrimeric G proteins. The protein encoded by this gene is most closely related to biogenic amine receptors. [provided by RefSeq, Jul 2008]

Product images:



Circular map for RC209672



Western blot validation of overexpression lysate (Cat# [LY410420]) using anti-DDK antibody (Cat# [TA50011-100]). Left: Cell lysates from untransfected HEK293T cells; Right: Cell lysates from HEK293T cells transfected with RC209672 using transfection reagent MegaTran 2.0 (Cat# [TT210002]).