

Product datasheet for RC209659

RHBDD2 (NM_001040456) Human Tagged ORF Clone

Product data:

Product Type:	Expression Plasmids
Product Name:	RHBDD2 (NM_001040456) Human Tagged ORF Clone
Tag:	Myc-DDK
Symbol:	RHBDD2
Synonyms:	NPD007; RHBDL7
Mammalian Cell Selection:	Neomycin
Vector:	pCMV6-Entry (PS100001)
E. coli Selection:	Kanamycin (25 ug/mL)
ORF Nucleotide Sequence:	>RC209659 ORF sequence Red=Cloning site Blue=ORF Green=Tags(s)

TTTTGTAATACGACTCACTATAGGGCGGCCGGAATTCGTCGACTGGATCCGGTACCGAGGAGATCTGCC
GCC**CGATCGCC**

ATGGCGGCTCGGGGCCGGGTGTCGCAGCTGGTCTTGTGTCCCGAGGTGCCATCCGCCACCTTCTTCA
CTGCGTCTCTCGTCTGGTTCCGGGCTCGCTGTTCTGCTGCAGCAGCCCTGGCGCCCTCGG
CCTCACGCTGAAGTCGAGGCCCTTCGCAACTGGCAAGTTTACAGGCTGGTAACCTACATCTTTGTCTAC
GAGAATCCCATCTCCCTGCCCTGCGGCGTATCATCATCTGGCGCTTTGCTGGCAATTCGAGAGAACC
TGGGCACCGTCCGCCACTGCTTCTCACCGTGATCTTCGCCATCTCTCCGCTATCATCTTCTGTCATT
CGAGGCTGTGTCATCACTGTCAAAGCTGGGGAAAGTGGAGGATGCCAGAGGTTTACCCCAAGTGGCCTT
GCCATGCTGGGAGTCAACACCGTCCGTTCTCGGATGAGGCGGGCCCTGGTGTGGCATGGTTGTGCCCT
CAGTCTGGTTCGCTGGCTCCTGCTGGGTGCCTCGTGGCTCATTCCCGAGACCTCTTTCCTCAGTAATGT
CTGCGGGCTGTCCATCGGGCTGGCTATGGCTCACCTACTGCTATTCCATCGACCTCTCAGAGCGAGTG
GCGCTGAAGCTCGATCAGACCTTCCCTTCAGCCTGATGAGGAGGATATCCGTGTTCAAGTACGTCTCAG
GGTCTTCAGCCGAGAGGAGGGCAGCCAGAGCCGAACTGAACCCGGTGCCTGGCTCCTACCCACACA
GAGCTGCCACCTCACCTGTCCCAAGCACCTGTGTCCAGACGCAGCACGCCAGTGGTCAGAAGCTG
GCCTCTGGCCCTCCTGCACCCCGGGCAGTGGCCACCTTGCCTCCGTACCAGCTGCCCTCCGGCCTGT
GCTATGTGAGAACCCTTTGGTCCAAACCCACCTCCTCCAGTGTCTACCCAGCTTCTGCGGGCACCTC
CCTGGGCATCCAGCCCCACGCTGTGAACAGCCCTGGCACGGTGTATTCTGGGCTTGGGCACACCA
GGGGCTGCAGGCTCAAGGAGTCTCCAGGTTCCCATGCCC

ACGCGTACGCGGCCGCTCGAGCAGAACTCATCTCAGAAGAGGATCTGGCAGCAATGATATCCTGGATT
ACAAGGATGACGACGATAAGGTTAA



[View online »](#)

Protein Sequence: >RC209659 protein sequence
Red=Cloning site Green=Tags(s)

MAASGPGCRSWCLCPEVPSATFFTALLSLLVSGPRLFLLQQPLAPSGTLKSEALRNWQVYRLVTYIFVY
 ENPISLPCGAI I IWRFAGNFERTVGTVRHCFFTVIFAIFSAIIFLSFEAVSSLSKLGVEDARGFTPVAF
 AMLGVTTVRSRMRRLVFGMVVPSVLVPWLLLGASWLIPQTSFLSNVCGLSIGLAYGLTYCYSIDLSEV
 ALKLDQTFPFSLMRRISVFKYVSGSSAERRAAQSRKLNVPVPGSYPTQSCHPHLSPSHPVSQTQHASGQKL
 ASWPSCTPGHMPTLPPYQPASGLCYVQNHFGPNPTSSSVYPASAGTSLGIQPPTPVNSPGTVYSGALGTP
 GAAGSKESSRVPMP

TRTRPLEQKLISEEDLAANDILDYKDDDDKV

Chromatograms: https://cdn.origene.com/chromatograms/mk6556_g03.zip

Restriction Sites: SgfI-MluI

Cloning Scheme:



* The last codon before the Stop codon of the ORF

ACCN: NM_001040456

ORF Size: 1092 bp

OTI Disclaimer: The molecular sequence of this clone aligns with the gene accession number as a point of reference only. However, individual transcript sequences of the same gene can differ through naturally occurring variations (e.g. polymorphisms), each with its own valid existence. This clone is substantially in agreement with the reference, but a complete review of all prevailing variants is recommended prior to use. [More info](#)

OTI Annotation: This clone was engineered to express the complete ORF with an expression tag. Expression varies depending on the nature of the gene.

Components: The ORF clone is ion-exchange column purified and shipped in a 2D barcoded Matrix tube containing 10ug of transfection-ready, dried plasmid DNA (reconstitute with 100 ul of water).

Reconstitution Method:

1. Centrifuge at 5,000xg for 5min.
2. Carefully open the tube and add 100ul of sterile water to dissolve the DNA.
3. Close the tube and incubate for 10 minutes at room temperature.
4. Briefly vortex the tube and then do a quick spin (less than 5000xg) to concentrate the liquid at the bottom.
5. Store the suspended plasmid at -20°C. The DNA is stable for at least one year from date of shipping when stored at -20°C.

RefSeq: [NM_001040456.3](#)

RefSeq Size: 1756 bp

RefSeq ORF: 1095 bp

Locus ID: 57414

UniProt ID: [Q6NTF9](#)

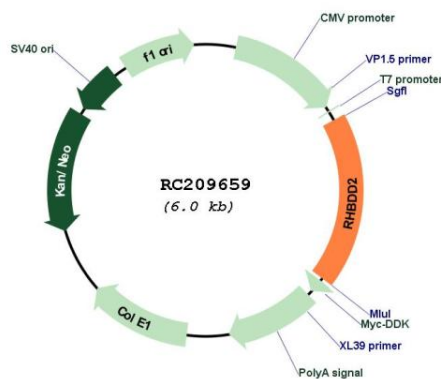
Cytogenetics: 7q11.23

Protein Families: Transmembrane

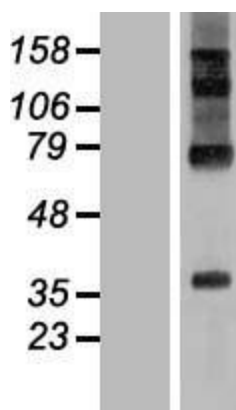
MW: 39.2 kDa

Gene Summary: The protein encoded by this gene is a member of the rhomboid family of membrane-bound proteases and is overexpressed in some breast cancers. Members of this family are involved in intramembrane proteolysis. In mouse, the orthologous protein associates with the Golgi body. [provided by RefSeq, Sep 2016]

Product images:



Circular map for RC209659



Western blot validation of overexpression lysate (Cat# [LY421772]) using anti-DDK antibody (Cat# [TA50011-100]). Left: Cell lysates from untransfected HEK293T cells; Right: Cell lysates from HEK293T cells transfected with RC209659 using transfection reagent MegaTran 2.0 (Cat# [TT210002]).