

Product datasheet for **RC209658**

ATL3 (NM_015459) Human Tagged ORF Clone

Product data:

Product Type:	Expression Plasmids
Product Name:	ATL3 (NM_015459) Human Tagged ORF Clone
Tag:	Myc-DDK
Symbol:	ATL3
Synonyms:	HSN1F
Mammalian Cell Selection:	Neomycin
Vector:	pCMV6-Entry (PS100001)
E. coli Selection:	Kanamycin (25 ug/mL)



[View online »](#)

ORF Nucleotide Sequence:

>RC209658 representing NM_015459
 Red=Cloning site Blue=ORF Green=Tags(s)

TTTTGTAATACGACTCACTATAGGGCGGCCGGGAATTCGTCGACTGGATCCGGTACCGAGGAGATCTGCC
 GCC**CGCATCGCC**

ATGTTGTCCCCTCAGCGAGTGGCAGCAGCTGCCTCAAGAGGAGCAGATGATGCCATGGAGAGCAGCAAGC
 CTGGTCCAGTGCAGGTTGTTTTGGTTTCAGAAAGATCAACATTCCTTTGAGCTAGATGAGAAAGCCTTGGC
 CAGCATCCTCTTGCAGGACCACATCCGAGATCTTGATGTGGTGGTGGTTTCAGTGCTGGTGCCTCCGA
 AAGGGCAAGTCTTCATTCTGGATTTTATGCTACGATACTTATATTCTCAGAAGGAAAGTGGCCATTCAA
 ATTGGTTGGGTGACCCAGAAGAACCCTAACAGGATTTTCTGGAGAGGGGGATCTGATCCAGAAACCAC
 TGGGATCAAATCTGGAGTGAAGTTTTCACTGTGGAGAAGCCAGGTGGGAAGAAGTTGCAGTTGTTCTG
 ATGGATACCCAGGGGCATTTGACAGCCAGTCAACTGTGAAAGACTGTGCTACCATCTTTGCTCTAAGCA
 CTATGACTAGTTCTGTTCAAGTTATAATTTATCTCAGAACATCAAGAAGATGATCTTCAACAGCTGCA
 GCTCTTACAGAATACGGTCGTCTGGCAATGGATGAAATTTTCCAAAAGCCTTTCCAGACTGATGTTT
 TTGGTTAGAGATTGGAGTTTCCCTTATGAATATAGCTATGGACTCCAAGGAGGAATGGCATTGTTGGATA
 AGCGTTTACAGGTGAAGGAACATCAACATGAAGAAATTCAGAATGTTTCCAAATCACATTCACATCATGTTT
 CTCCGATGTCACCTGCTTCTCTTACCACATCCAGGACTCCAGGTGGCCACAAGCCCTGACTTTGATGGG
 AAATTAAGATATTGCTGGTGAATTCAAAGAGCAGTTACAGGACTGATACCGTATGTATTAACCCAT
 CTAAGTTAATGAAAAGGAGATCAATGGCTCAAAGGTACCTGTCCGGGACTACTGGAGTATTTAAGGC
 ATATATTAATTTATCAAGGAGAAGATCTGCCTCACCCAAAGTCCATGCTTCAGCCACTGCTGAAGCC
 AACAACTTAGCAGCTGCAGCCTCTGCCAAGGACATTTATTATAACAACATGGAAGAGGTTTGTGGGGGAG
 AGAAACCTTATTTGTCTCCAGACATTTAGAGGAGAAGCACTGTGAATTCAAACAACCTTGTCTGGACCA
 TTTTAAGAAGACCAAGAAGATGGGTGGGAAGATTTTTCAGCTTTCGTTACCAGCAGGAGCTGGAGGAGGAA
 ATCAAGGAATTATATGAGAACTTCTGCAAGCACAAATGGTAGCAAGAACGCTTTCAGCACCTTCCGAACCC
 CTGCAGTGTGTTACGGGCATTGTAGCTTTGTACATAGCCTCAGGCCTCACTGGCTTATAGGTTCTGA
 GGTTGTAGCCAGTTGTTCAACTGTATGGTTGGACTACTGTTAATAGCACTCCTCACCTGGGGCTACATC
 AGGTATTCTGGTCAATATCGTGAGCTGGGCGGAGCTATTGATTTTGGTCCGCATATGTGTTGGAGCAGG
 CTCTTCTCATATCGTAATCCACTCAGGCCACTGTGAGGGATGCAGTTGTTGGAAGACCATCCATGGA
 TAAAAAGCTCAA

ACGCGTACGCGGCCGCTCGAGCAGAAACTCATCTCAGAAGAGGATCTGGCAGCAAATGATATCCTGGATT
 ACAAGGATGACGACGATAAGGTTTAA

Protein Sequence:

>RC209658 representing NM_015459
 Red=Cloning site Green=Tags(s)

MLSPQRVAAAASRGADDAMESSKPGPVQVVLVQKDQHSFELDEKALASILLQDHIRDLVVVSVAGAFR
 KGKSFILDFMLRYLSQKESGHSNWLGDPEEPLTGF SWRGGSDPETTGIQIWSEVFTVEKPGGKAVVVL
 MDTQGFDSQSTVKDCATIFALSTMTSSVQIYNLSQNIQEDDLQQLQFTEYGRLAMDEIFQKPFQTLMF
 LVRDWSFPYEYSYGLQGGMAFLDKRLQVKEHQHEEQNVRNHIHSCFSDVTCFLLPHPLQVATSPDFDG
 KLKDIAGEFKEQLQALIPYVLNPSKLMKEINGSKVTGRLLLEYFKAYIKIYQGEDLPHPKSMLQATAEA
 NNLAASAKDIYNNMEEVCGGKPYLSPDILEEKHCFKQLALDHFKTKKMGKDFSFYRQQELEEE
 IKELYENFCKHNGSKNVFSTFRTPAVLFTGIVALYIASGLTGFIGLEVVAQLFNCMVGLLLIALLTWGYI
 RYSGQYRELGAIDFGAAYVLEQASSHIGNSTQATVRDAVVGRPSMDKKAQ

TRTRPLEQKLISEEDLAANDILDYKDDDDKV

Chromatograms:

https://cdn.origene.com/chromatograms/mg3381_c12.zip

Restriction Sites:

Sgfl-Mlul

Cloning Scheme:

Cloning sites used for ORF Shutting:



* The last codon before the Stop codon of the ORF

ACCN: NM_015459

ORF Size: 1623 bp

OTI Disclaimer: The molecular sequence of this clone aligns with the gene accession number as a point of reference only. However, individual transcript sequences of the same gene can differ through naturally occurring variations (e.g. polymorphisms), each with its own valid existence. This clone is substantially in agreement with the reference, but a complete review of all prevailing variants is recommended prior to use. [More info](#)

OTI Annotation: This clone was engineered to express the complete ORF with an expression tag. Expression varies depending on the nature of the gene.

Components: The ORF clone is ion-exchange column purified and shipped in a 2D barcoded Matrix tube containing 10ug of transfection-ready, dried plasmid DNA (reconstitute with 100 ul of water).

Reconstitution Method:

1. Centrifuge at 5,000xg for 5min.
2. Carefully open the tube and add 100ul of sterile water to dissolve the DNA.
3. Close the tube and incubate for 10 minutes at room temperature.
4. Briefly vortex the tube and then do a quick spin (less than 5000xg) to concentrate the liquid at the bottom.
5. Store the suspended plasmid at -20°C. The DNA is stable for at least one year from date of shipping when stored at -20°C.

RefSeq: [NM_015459.5](#)
RefSeq Size: 2256 bp

RefSeq ORF: 1626 bp

Locus ID: 25923

UniProt ID: [Q6DD88](#)

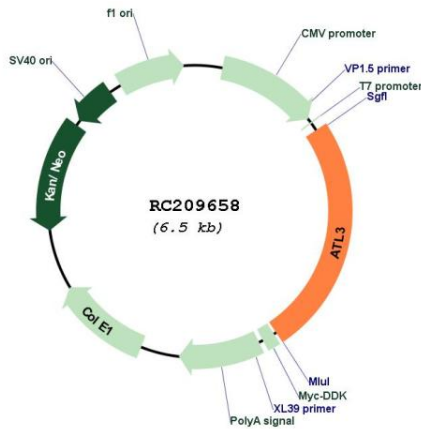
Cytogenetics: 11q13.1

Protein Families: Transmembrane

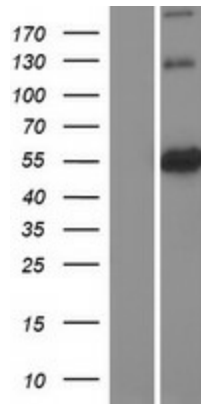
MW: 60.4 kDa

Gene Summary: This gene encodes a member of a family of dynamin-like, integral membrane GTPases. The encoded protein is required for the proper formation of the network of interconnected tubules of the endoplasmic reticulum. Mutations in this gene may be associated with hereditary sensory neuropathy type IF. Alternatively spliced transcript variants that encode distinct isoforms have been described. [provided by RefSeq, Feb 2014]

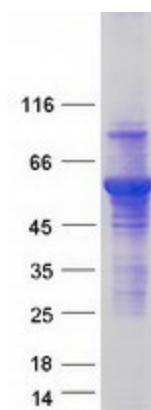
Product images:



Circular map for RC209658



Western blot validation of overexpression lysate (Cat# [LY414531]) using anti-DDK antibody (Cat# [TA50011-100]). Left: Cell lysates from untransfected HEK293T cells; Right: Cell lysates from HEK293T cells transfected with RC209658 using transfection reagent MegaTran 2.0 (Cat# [TT210002]).



Coomassie blue staining of purified ATL3 protein (Cat# [TP309658]). The protein was produced from HEK293T cells transfected with ATL3 cDNA clone (Cat# RC209658) using MegaTran 2.0 (Cat# [TT210002]).