

Product datasheet for RC209657

SEMA5B (NM_001031702) Human Tagged ORF Clone

Product data:

Product Type:	Expression Plasmids
Product Name:	SEMA5B (NM_001031702) Human Tagged ORF Clone
Tag:	Myc-DDK
Symbol:	SEMA5B
Synonyms:	SEMAG; SemG
Mammalian Cell Selection:	Neomycin
Vector:	pCMV6-Entry (PS100001)
E. coli Selection:	Kanamycin (25 ug/mL)
ORF Nucleotide Sequence:	>RC209657 representing NM_001031702 Red=Cloning site Blue=ORF Green=Tags(s)

TTTTGTAATACGACTCACTATAGGGCGGCCGGAATTCGTCGACTGGATCCGGTACCGAGGAGATCTGCC
GCC**CGATCGCC**

ATGCCCTGTGGCTTCAGTCCGTCTCCTGTTGCCACCACCTCGTCCCTGGGCCGCTGATACCCAGCCC
AACAGCTAAGGTGTGGATGGACAGTAGGGGGCTGGCTTCTCACTGGTCAGGGGCTTCTCCCTGTCT
GCCTCCCGGAGCTAGGACTGCAGAGGGCCTATCATGGTCTTGCAGGCCCTGGCTGTCTCGCTGTTG
CTGCCAGCCTCACACTGCTGGTGTCCACCTCTCCAGCTCCAGGATGTCTCCAGTGAAGCCAGCAGTG
AGCAGCAGCTGTGCGCCCTTAGCAAGCACCCACCGTGGCCTTTGAAGACCTGCAGCCGTGGGTCTCTAA
CTTCACCTACCCTGGAGCCCGGATTTCTCCAGCTGGCTTTGGACCCCTCCGGGAACAGCTCATCGTG
GGAGCCAGGAACCTCTTCACTCAGCTCAGCCTTGCCAATGTCTCTTCTTTCAGGCCACAGAGTGGCCCT
CCAGTGAGGACACGCGCCGCTCCTGCCAAAGCAAAGGGAAGACTGAGGAGGAGTGTGAGAACTACGTGCG
AGTCTGATCGTCGCGGCCGGAAGGTGTTATGTGTGGAACCAATGCCTTTTCCCCATGTGCACCAGC
AGACAGGTGGGAACTCAGCCGACTATTGAGAAGATCAATGGTGTGGCCCGCTGCCCTATGACCCAC
GCCACAACCTCCACAGCTGCATCTCTCCAGGGGAGCTCTATGCAGCCACGGTATCGACTTCTCAGG
TCGGGACCCTGCCATCTACCGCAGCCTGGGCAGTGGGCCACCGCTTCGCACTGCCAATAAAGTCCAAG
TGGCTTAATGAGCCAACTTCGTGGCAGCCTATGATATTGGGCTGTTTGCATACTTCTTCCGCGGAGA
ACGCAGTGGAGCACGACTGTGGACGCACCGTGTACTCTCGCGTGGCCCGGTGTGCAAGAATGACGTGGG
GGGCCGATTCTGCTGGAGGACACATGGACCACATTCATGAAGGCCCGGCTCAACTGCTCCCGCCGGGC
GAGGTCCCTTCTACTATAACGAGCTGCAGAGTGCCTTCACTTGCCGGAGCAGGACCTCATCTATGGAG
TTTTACAACCAACGTAACAGCATTGCGGCTTCTGCTGTCTGCGCCTTCAACCTCAGTGTATCTCCCA
GGCTTTCAATGGCCATTTGCTACCAGGAGAACCCAGGGCTGCCTGGCTCCCATAGCCAACCCATC
CCCAATTTCCAGTGTGGACCCTGCCTGAGACCGGTCCCAACGAGAACCTGACGGAGCGCAGCCTGCAGG
ACGCGCAGCGCTTCTCCTGATGAGCGAGCGCTGCAGCCGTGACACCCGAGCCCTGTGTACCCAGGA
CAGCGTGGCTTCTCACCTCGTGGTGGACCTGGTGCAGGCTAAAGACAGCCTTACCATGTACTCTAC



[View online »](#)

ATTGGCACCGAGTCGGGCACCATCCTGAAGGCGCTGTCCACGGCGAGCCGACGCCTCCACGGCTGCTACC
TGGAGGAGCTGCACGTGCTGCCCGGGCGCCGCGAGCCCTGCGCAGCCTGCGCATCCTGCACAGCGC
CCGCGCGCTCTTCGTGGGGCTGAGAGACGGCGTCTGCGGGTCCCACTGGAGAGGTGCGCCGCTACCGC
AGCCAGGGGGCATGCCTGGGGGCCCGGGACCCGTAAGTGTGGTGGGACGGGAAGCAGCAACGTTGCAGCA
CACTCGAGGACAGCTCCAACATGAGCCTCTGGACCCAGAACATCACCCGCTGTCTGTGCGGAATGTGAC
ACGGGATGGGGGCTTCGGCCCATGGTCACCATGGCAACCATGTGAGCACTTGGATGGGGACAACCTCAGGC
CTTTGCCGTGTGCGAGCTCGATCCTGTGATTCCCCTCGACCCCGCTGTGGGGGCTTGCATGCTGGGGC
CAGCCATCCACATCGCCAACTGCTCCAGGAATGGGGCGTGGACCCGTTGTCATCGTGGGCGCTGTGAG
CACGTCTGTGGCATCGCTTCCAGTCCGCCAGCGAAGTTGCAGCAACCTGCTCCCGCCACGGGGC
CGCATCTGCGTGGGAAGAGCCGGGAGGAACGGTTCTGTAATGAGAACACGCCTTGCCCGGTGCCATCT
TCTGGGCTTCTGGGGCTCCTGGAGCAAGTGCAGCAGCAACTGTGGAGGGGGCATGCAGTCGCGCGCTG
GGCCTGCGAGAACGGCAACTCCTGCCTGGGCTGCGGCGTGGAGTTCAAGACGTGCAACCCCGAGGGCTG
CCCGAAGTGGCGCAACACCCCTGGACGCCGTGGTGCCTGAACTGACGCAGGGCGGGGCACGGC
AGGAGCAGCGGTTCCGCTTACCTGCCGCGCGCCCTTGCAGACCCGCACGGCCTGCAGTTCCGCGAGG
AAGGACCAGACGAGGACCTGTCCGCGGACGGCTCCGGTCTCTGCGACCCGACGCCCTGGTGGAGGAC
CTCTGCGCAGCGGGAGCACCTCCCGCACACGGTGGAGCGGGGCTGGGCGCCCTGGGGCCGTTGTCGT
CCTGCTCCCGGACTGCGAGCTGGGCTTCCGCGTCCGCAAGAGAAGTGCACAAACCCGGAGCCCGCAA
CGGGGGCTGCCCTGCGTGGGCGATGCTGCCGAGTACCAGGACTGCAACCCCGAGGCTTGCCAGTTCCG
GGTGTCTGGTCTGCTGGACCTCATGGTCTCCATGCTCAGCTTCTGTGGTGGGGTCACTATCAACGCA
CCCGTTCTGCACCAGCCCCGACCCCTCCCGAGGTGAGGACATCTGTCTCGGGTGCACACGGAGGAGGC
ACTATGTGCCACACAGGCTGCCAGAAGGCTGGTCCGCTGGTCTGAGTGGAGTAAGTGCACGACGAC
GGAGCCCAGAGCCGAAGCCGGCACTGTGAGGAGTCTCCAGGGTCCAGCGCTGTGCTGGAACAGCA
GCCAGAGCCGCCCCGCCCCACAGCGAGATTCCCGTCACTCCAGCCTCCAGCATGGAGGAGGCCAC
CGGCTGTGAGGGTTCAATCTCATCCACTTGGTGGCCACGGGCATCTCTGCTTCTGGGCTCTGGGCTC
CTGACCCTAGCAGTGTACCTGTCTTCCAGCACTGCCAGCGTCAGTCCCAGGAGTCCACACTGGTCCATC
CTGCCACCCCAACCATTTGCACTACAAGGGCGGAGGCACCCGAAGAATGAAAAGTACACCCATGGA
ATTCAAGACCCTGAACAAGAATAACTTGATCCCTGATGACAGAGCCAATTCTACCCATTGCAGCAGACC
AATGTGTACAGACTACTACTACCAAGCCCCCTGAACAACACAGCTTCCGGCCCGAGGCCTCACCTG
GACAACGGTGTCTCCCAACAGC

ACGCGTACGCGGCCGCTCGAGCAGAACTCATCTCAGAAGAGGATCTGGCAGCAAATGATATCCTGGATT
ACAAGGATGACGACGATAAGGTTTAA

Protein Sequence: >RC209657 representing NM_001031702
Red=Cloning site Green=Tags(s)

MPCGFSPSPVAHHLVPGPPDTPAQQLRGWTVGGWLLSLVRGLLPCLPPGARTAEGPIMVLAGPLAVSLL
 LPSLTLLVSHLSSSQDVSSEPSSEQQCALSKHPTVAFEDLQPWSNFTYPGARDFSQLALDPSGNQLIV
 GARNYLFRLSLANVSLAQATEWASSEDTRRSCQSKGKTEEECQNYVRVLI VAGRKVFMCGTNAFSPMCTS
 RQVGNLSRTIEKINGVARCPYDPRHNSTAVISSQGELYAATVIDFSGRDPAIYRSLGSGPPLRTAQYNSK
 WLNPNFVAAYDIGLFAYFFLRENAVEHDCGRTVYSRVARVCKNDVGGFRFLEDTWTTFMKARLNCSRPG
 EVPFYNELQSAFHLPEQDLIYGVFTTNVNSIAASAVCAFNLSAISQAFNGPFRYQENPRAAWLPIANPI
 PNFQCGTLPETGPNENLTERSLQDAQRLFLMSEAVQPVTPPCVTQDSVRFSHLVVDLVQAKDTLYHVLV
 IGTESGTLKALSTASRSLHGYLEELHVLPPGRREPLRSLRILHSARALFVGLRDGVLVPLERCAAYR
 SQGACLGARDPYCGWDGKQRCSTLEDSSNMSLWTQINITACPVNRVTRDGGFGPWSWPQCEHLGDNSG
 SCLCRARSCDSPRRCGLDCLGPAIHIANCSRNGAWTPWSSWALCSTSCGIGFQVRQRSCSNPAPRHGG
 RICVKGSRERFCNENTPCVPPIFWASWGSWSKCSSNCGGMQSRRRACENGNSCLGCGVEFKTCNPEGC
 PEVRRNTPWTPWLPVNVTOGGARQEQRFRFTCRAPLADPHGLQFGRRRTETRTCPADGSGSCD DALVED
 LLRSGSTSPHTVSGGWAAWGPWSSCSRDCELGFRVRKRTC TNPEPRNGGLPCVGDAAEYQDCNPQACPVR
 GAWSCWTSWSPCSASC GGHYQRTRCTSPAPSPGEDI CLGLHTEALCATQACPEGWSPSEWSKCTDD
 GAQSRSRHCEELLPGSSACAGNSSQSRPCPYSEIPVILPASSMEEATGCAGFNL IHLVATGISFLGSL
 LTLAVYLSQCQCQRQSQESTLVHPATPNHLHYKGGGTPKNEKYTPMEFKTLNKNLIPDDRANFYPLQQT
 NVYTTTYPSPLNKHSFRPEASPGQRCFPNS

TRTRPLEQKLISEEDLAANDILDYKDDDDKV

Chromatograms: https://cdn.origene.com/chromatograms/mg4103_e05.zip

Restriction Sites: SgfI-MluI

Cloning Scheme:

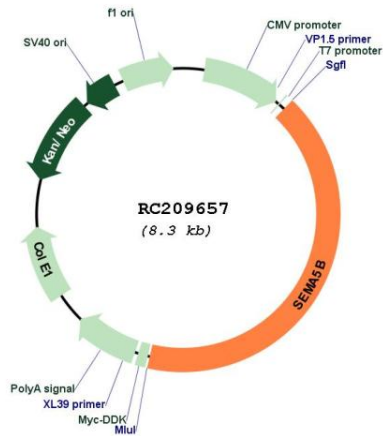


ACCN: NM_001031702

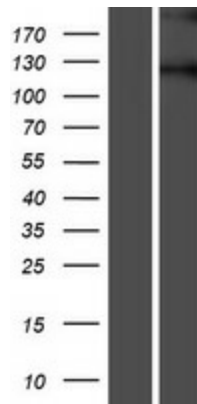
ORF Size: 3453 bp

OTI Disclaimer:	The molecular sequence of this clone aligns with the gene accession number as a point of reference only. However, individual transcript sequences of the same gene can differ through naturally occurring variations (e.g. polymorphisms), each with its own valid existence. This clone is substantially in agreement with the reference, but a complete review of all prevailing variants is recommended prior to use. More info
OTI Annotation:	This clone was engineered to express the complete ORF with an expression tag. Expression varies depending on the nature of the gene.
Components:	The ORF clone is ion-exchange column purified and shipped in a 2D barcoded Matrix tube containing 10ug of transfection-ready, dried plasmid DNA (reconstitute with 100 ul of water).
Reconstitution Method:	<ol style="list-style-type: none">1. Centrifuge at 5,000xg for 5min.2. Carefully open the tube and add 100ul of sterile water to dissolve the DNA.3. Close the tube and incubate for 10 minutes at room temperature.4. Briefly vortex the tube and then do a quick spin (less than 5000xg) to concentrate the liquid at the bottom.5. Store the suspended plasmid at -20°C. The DNA is stable for at least one year from date of shipping when stored at -20°C.
RefSeq:	NM_001031702.1 , NP_001026872.1
RefSeq Size:	4737 bp
RefSeq ORF:	3456 bp
Locus ID:	54437
UniProt ID:	Q9P283
Cytogenetics:	3q21.1
Protein Families:	Transmembrane
Protein Pathways:	Axon guidance
MW:	125.7 kDa
Gene Summary:	This gene encodes a member of the semaphorin protein family which regulates axon growth during development of the nervous system. The encoded protein has a characteristic Sema domain near the N-terminus, through which semaphorins bind to plexin, and five thrombospondin type 1 repeats in the C-terminal region of the protein. The protein product may be cleaved and exist as a secreted molecule (PMID: 19463192). Multiple transcript variants encoding different isoforms have been found for this gene. [provided by RefSeq, Jan 2012]

Product images:



Circular map for RC209657



Western blot validation of overexpression lysate (Cat# [LY422156]) using anti-DDK antibody (Cat# [TA50011-100]). Left: Cell lysates from untransfected HEK293T cells; Right: Cell lysates from HEK293T cells transfected with RC209657 using transfection reagent MegaTran 2.0 (Cat# [TT210002]).