

## Product datasheet for **RC209640**

### **RAB11FIP1 (NM\_025151) Human Tagged ORF Clone**

#### **Product data:**

Product Type:	Expression Plasmids
Product Name:	RAB11FIP1 (NM_025151) Human Tagged ORF Clone
Tag:	Myc-DDK
Symbol:	RAB11FIP1
Synonyms:	NOEL1A; rab11-FIP1; RCP
Mammalian Cell Selection:	Neomycin
Vector:	pCMV6-Entry (PS100001)
E. coli Selection:	Kanamycin (25 ug/mL)



[View online »](#)

ORF Nucleotide  
Sequence:

>RC209640 ORF sequence  
Red=Cloning site Blue=ORF Green=Tags(s)

TTTTGTAATACGACTCACTATAGGGCGGCCGGGAATTCGTCGACTGGATCCGGTACCGAGGAGATCTGCC  
GCC**CGGATCGCC**

ATGTCCCTAATGGTCTCGGCTGGCCGGGGCCTGGGGCCGTGTGGTCCCCAACCCACGTGCAGGTGACGG  
TGCTGCAGGCGCGGGCCCTGCGGGCCAAGGGCCCCGGGGCACGAGCGACGCGTACGCGGTGATCCAGGT  
GGCAAGGAGAAGTACGCCACCTCCGTGTGCGAGCGCAGCCTGGCGCGCCCGTGTGGCGGAGGAGGCC  
ACCTTCGAGCTGCCATCGCTGCTCCTCCGACCCGCGGCCGCCACCCTGCAGCTCACCGTCTGC  
ACCGCGCGCTGCTCGGCCCGACAAGTTCTGGCCGCGCCGAGGTGGACCTGCGGGATCTGCACCCGCA  
CCAGGGCCCGAGGAAGACGCAGTGGTATAAGTTGAAATCCAAACCAGGAAAGAAGACAAGGAGCGAGGA  
GAAATTGAGGTTGACATCCAGTTTATGAGAAACAACATGACTGCCAGCATGTTTGACCTTCTATGAAAG  
ACAAGTCTCGAATCCATTTGAAAGCTGAAGGACAAGATCAAGGGGAAGAATAAGGACAGTGGGTGAGA  
CACCGCCTCCGCCATCATCCCTAGCACGACACCTTCGGTCGACAGTGATGATGAGTCTGTGGTTAAAGAC  
AAGAAAAAGAAATCAAAGATCAAGACCTTACTTTCCAAGTCAAATTTGCAGAAGACGCCTCTTCCAGT  
CCATGTCTGTCTGCCGACTTCAAAGCCAGAAAAAGTGTGCTTTCGTCGCCGAGACTTTCAGTCCCAGTG  
GGATGAAGATGACAATGAGGATGAGTCCTCCTCGGCCTCGGATGTCATGTCTCACAAAGAGAACAGCGAGT  
ACGGATCTTAAGCAACTGAACCAGGTCAACTTTACCTTCCCAAGAAGGAAGGACTTTCCTTTCTTGGTG  
GCCTTCGGTCTAAGAATGATGTCCTTTCCCGCTCTAATGTCTGCATCAATGGGAACCATGTTTACCTGGA  
GCAGCCAGAAGCCAAGGGTGAGATCAAGGATAGCAGCCCGTCTCCTCCCATCCCCAAGGGCTTCTAGA  
AAGAAGCATTGTTCTCTTCTACAGAGAACCTGGCGGCTGGGTCTTGAAGGAGCCTGCTGAAGGAGGTG  
GGCTGTCTTGACAGGCAGCTCTCCGAATCTTCCACCAAGGACTCCTTGAAGTCTATGACCTGCCGTC  
CTACCGACTGCCCACTGGTCACTGGGACCTCAGGGAAAACATGGCCCCGCAAACCTCAGAGGCCACA  
AAAGAAGCTAAGGAGAGCAAGAAGCCAGAGAGCAGGAGGTCTCTTTGCTGTCTCTGATGACGGGAAGA  
AGGATGTGGCTAAGGGCAGTGAAGGTGAAAACCTCTCACGGTCCCAGGGAGGGAGAAGGAAGGCATGCT  
GATGGGGTTAAGCCGGGGAGGACGCATCGGGCCCTGCTGAAGACCTTGTGAGAAGATCTGAGAAAGAT  
ACTGCAGCTGTTGTCTCCAGACAGGGCAGCTCCCTGAACCTCTTGAAGATGTGCAGATCACAGAACCAG  
AAGCTGAGCCAGAGTCCAAGTCTGAACCGAGACCTCCAATTTCTCTCCGAGGGCTCCCCAGACCAGAGC  
TGTC AAGCCCCGACTTCATCCTGTGAAGCCAATGAATGCAATGGCCACCAAGGTTGCTAACTGCAGCTTG  
GGAAGTCCACCATCATCAGTGAGAACTTGAACAATGAGGTGATGATGAAGAAATACAGCCCTCGGACC  
CTGCATTTGCATATGCGCAGCTGACCCACGATGAGCTGATTCAGCTGGTCTCAAACAGAAAGGAAACGAT  
AAGCAAGAAGGAGTTCAGGTCCGCGAGCTGGAAGACTACATTGACAACCTGCTTGTGACGGTTCATGGAA  
GAAACCCCAATATCCTCCGCATCCCGACTCAGGTTGGCAAAAAAGCAGGAAAGATG

AG**CGGACCG**ACGCGTACGCGGCCGCTCGAGCAGAAACTCATCTCAGAAGAGGATCTGGCAGCAAATGATATCC  
TGGATTACAAGGATGACGACGATAAGGTTTAA

**Protein Sequence:** >RC209640 protein sequence  
Red=Cloning site Green=Tags(s)

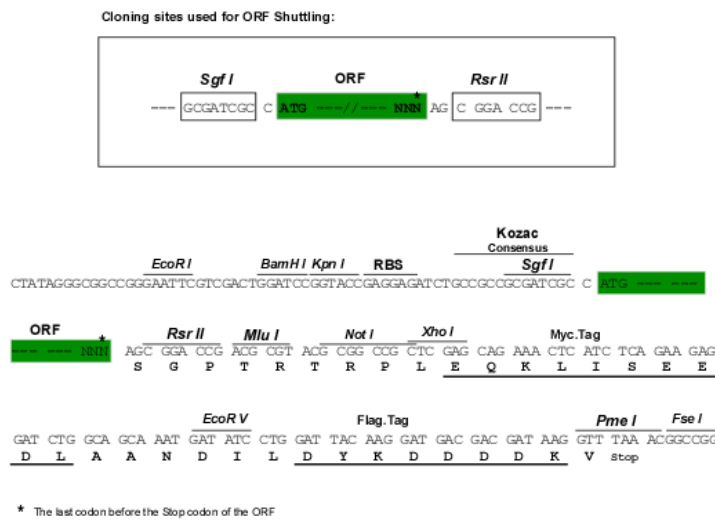
```
MSLMVSAGRGLGAVWSPTHVQVTVLQARGLRAKGGTSDAYAVIQVGKEKYATSVSERSLGAPVWREEA
TFELPSLLSSGPAATAATLQLTVLHRALLGLDKFLGRAEVDLRDLHRDQRRKTQWYKLSKPKGKDKERG
EIEVDIQFMRNNMTASMFDL SMKDKSRNPFGLKDKIKGKNKDSGSDTASAIIPSTTPSVDSDDES SVVKD
KKKKSKIKTLLSKSNLQKTPLSQMSVLPTSKPEKVLRLRPGDFQSQWDEDDNEDESSASDVM SHKRTAS
TDLKQLNQVNF TLPKKEGLSFLGGLRSKNDVLSRSNVCINGNHVYLEQPEAKGEIKDSSPSSSPKGF
RKKHLFSSTENLAAGSWKEPAEGGLSSDRQLSESSTKDSLKSM TLP SYRPA PLVSGDLRENMAPANSEAT
KEAKESKKPESRRSSLLSLMTGKKDVAKGSEGENPLTVPGREKEGMLMGV KPGEDASGPAEDLVRSEKD
TAAVSRQGSSSLNLFEDVQITEPEAEPEKSEPRPPISSPRAPQTRAVK PRLHPVKPMNAMATKVANCSL
GTATII SENLNNEVMMKKYSPSDPAFAYAQLTHDELIQLVLKQKETISKKEFQVRELEDYIDNLLVRVME
ETPNILRIPTQVGKKAGKM
```

SGPTRTRPLEQKLISEEDLAANDILDYKDDDDKV

**Chromatograms:** [https://cdn.origene.com/chromatograms/mk6618\\_h02.zip](https://cdn.origene.com/chromatograms/mk6618_h02.zip)

**Restriction Sites:** SgfI-RsrII

**Cloning Scheme:**



**ACCN:** NM\_025151

**ORF Size:** 1947 bp

**OTI Disclaimer:** The molecular sequence of this clone aligns with the gene accession number as a point of reference only. However, individual transcript sequences of the same gene can differ through naturally occurring variations (e.g. polymorphisms), each with its own valid existence. This clone is substantially in agreement with the reference, but a complete review of all prevailing variants is recommended prior to use. [More info](#)

**OTI Annotation:** This clone was engineered to express the complete ORF with an expression tag. Expression varies depending on the nature of the gene.

**Components:** The ORF clone is ion-exchange column purified and shipped in a 2D barcoded Matrix tube containing 10ug of transfection-ready, dried plasmid DNA (reconstitute with 100 ul of water).

**Reconstitution Method:**

1. Centrifuge at 5,000xg for 5min.
2. Carefully open the tube and add 100ul of sterile water to dissolve the DNA.
3. Close the tube and incubate for 10 minutes at room temperature.
4. Briefly vortex the tube and then do a quick spin (less than 5000xg) to concentrate the liquid at the bottom.
5. Store the suspended plasmid at -20°C. The DNA is stable for at least one year from date of shipping when stored at -20°C.

**RefSeq:** [NM\\_025151.5](#)

**RefSeq Size:** 5954 bp

**RefSeq ORF:** 1950 bp

**Locus ID:** 80223

**UniProt ID:** [Q6WKZ4](#)

**Cytogenetics:** 8p11.23

**Domains:** C2

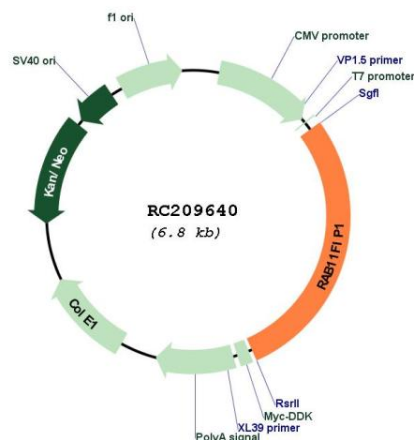
**Protein Families:** Druggable Genome

**Protein Pathways:** Endocytosis

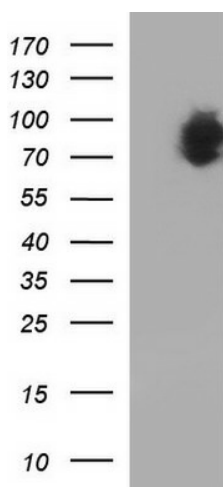
**MW:** 71 kDa

**Gene Summary:** This gene encodes one of the Rab11-family interacting proteins (Rab11-FIPs), which play a role in the Rab-11 mediated recycling of vesicles. The encoded protein may be involved in endocytic sorting, trafficking of proteins including integrin subunits and epidermal growth factor receptor (EGFR), and transport between the recycling endosome and the trans-Golgi network. Alternative splicing results in multiple transcript variants. A pseudogene is described on the X chromosome. [provided by RefSeq, Dec 2013]

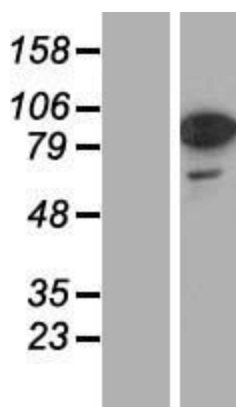
## Product images:



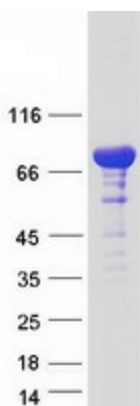
Circular map for RC209640



HEK293T cells were transfected with the pCMV6-ENTRY control (Cat# [PS100001], Left lane) or pCMV6-ENTRY RAB11FIP1 (Cat# RC209640, Right lane) cDNA for 48 hrs and lysed. Equivalent amounts of cell lysates (5 ug per lane) were separated by SDS-PAGE and immunoblotted with anti-RA(Cat# [TA590445]). Positive lysates [LY410868] (100ug) and [LC410868] (20ug) can be purchased separately from OriGene.



Western blot validation of overexpression lysate (Cat# [LY410868]) using anti-DDK antibody (Cat# [TA50011-100]). Left: Cell lysates from untransfected HEK293T cells; Right: Cell lysates from HEK293T cells transfected with RC209640 using transfection reagent MegaTran 2.0 (Cat# [TT210002]).



Coomassie blue staining of purified RAB11FIP1 protein (Cat# [TP309640]). The protein was produced from HEK293T cells transfected with RAB11FIP1 cDNA clone (Cat# RC209640) using MegaTran 2.0 (Cat# [TT210002]).