

## Product datasheet for **RC209639**

### AMFR (NM\_001144) Human Tagged ORF Clone

#### Product data:

Product Type:	Expression Plasmids
Product Name:	AMFR (NM_001144) Human Tagged ORF Clone
Tag:	Myc-DDK
Symbol:	AMFR
Synonyms:	GP78; RNF45
Mammalian Cell Selection:	Neomycin
Vector:	pCMV6-Entry (PS100001)
E. coli Selection:	Kanamycin (25 ug/mL)



[View online »](#)

**ORF Nucleotide  
Sequence:**

>RC209639 ORF sequence  
 Red=Cloning site Blue=ORF Green=Tags(s)

TTTTGTAATACGACTCACTATAGGGCGGCCGGAATTCGTCGACTGGATCCGGTACCGAGGAGATCTGCC  
 GCC**CGGATCGCC**

ATGCCGCTGCTTCTCCTCGAGCGCTTCCCCTGGCCAGCCTCCGCACCTACACGGGCCTCAGCGCCTGG  
 CCCTGCTGGGCACCATCATCAGCGCCTACCGCGCGCTCAGCCAGCCCAGGCCGGCCCCGGCGAGCCGGA  
 CCAGCTAACGGCCTCGCTGCAGCCTGAGCCGCCGGCGCCCGCCGGCCGAGCGCCGGGGACCCCGGCC  
 CGCGATGTGGCCAGTACCTGCTCTCAGACAGCCTCTTCGTGTGGTTCTAGTAAATACCGCTTGTGTG  
 TTTTGATGTTGGTGGCTAAGCTCATCCAGTGATTGTGTTTGGCCCTTTCGAGTGAGTGAGAGACAGCA  
 TCTCAAAGACAAATTTTGGAAATTTATTTTCTACAAGTTCATTTTCATCTTTGGTGTGCTGAATGCCAG  
 ACAGTGAAGAGGTGGTCATGTGGTGCCTCTGGTTTCCCGGACTGTCTTCTGCACCTGATGGTTCAGC  
 TCTGCAAGGATCGATTTGAATATCTTCCCTTCTCGCCACCACGCCGATGAGCAGCCACGGTCGAGTCT  
 GTCCTGTGGTGGCCATGCTGCTTTCCTGCTGTGGACTGGCGCCGTCTGCTCCATCACCGGCTACACC  
 CACGGAATGCACACCTTGGCTTTCATGGCTGCAGAGTCTTCTTGTGACAGTGAGGACTGCTCATGTGA  
 TTTTACGATACGTAATTCACCTCTGGGACCTCAACCACGAAGGGACGTGGGAAGGAAAGGGACGTATGT  
 CTATTACACAGACTTTGTGATGGAGCTCACTCTCCTGTCCCTGGACCTCATGCACCATATTCACATGTTG  
 TTATTTGGCAACATCTGGTTATCCATGGCCAGCCTGGTCATCTTTATGCAGCTGCGTTACCTGTTTCATG  
 AGGTGCAACGTCGAATTCGTGCGCACAAGAACTATCTACGTGTGGTTGAAAACATGGAGGCCAGGTTTGC  
 AGTTGCAACTCCAGAGGAGCTGGCTGTCAACAATGACGACTGTGCCATCTGTTGGGACTCCATGCAGGCT  
 GCGCGGAAACTGCCCTGTGGACATCTTTCCACAACCTCTGCTTCGTTCCCTGGCTAGAACAAGACACCT  
 CCTGTCCAACATGCAGAATGCTCTTAATATTGCCGACAATAATCGTGTGAGGGAAGAACATCAAGGAGA  
 GAACTTGGATGAGAATTTGGTTCCCTGTAGCAGCAGCCGAAGGGAGACCTCGCTTAAACCAACACAATCAC  
 TTCTTCCATTTGATGGGTCTCGGATTGCGAGCTGGCTGCCGAGTTTTTTCGGTTGAAGTGATGCACACCA  
 CCAACATCTTGGCATTACGCAGGCCAGCAACTCCCAGCTCAATGCAATGGCTCATCAGATTCAAGAGAT  
 GTTTCCCAGGTTCCATACCATCTGGTACTGCAGGACCTCCAGCTGACACGCTCAGTTGAAATAACAACA  
 GACAATATTTAGAAGGACGGATTCAAGTACCTTTTCTACACAGCGGTGAGATAGCATCAGACCTGCAT  
 TGAACAGTCTGTGAAAGGCCAAGCAGTGACCAGGAAGAGGGAGAACTTCTGCTCAGACCGAGCGTGT  
 GCCACTGGACCTCAGTCTCGCTGGAGGAGACGCTGGACTTCGGCGAGGTGGAAGTGGAGCCCAGTGAG  
 GTGGAAGACTTCGAGGCTCGTGGGAGCCGCTTCTCCAAGTCTGCTGATGAGAGACAGCGCATGCTGGTGC  
 AGCGTAAGGACGAACTCCTCCAGCAAGCTCGCAAACGTTTCTTGAACAAAAGTTCTGAAGATGATGCGGC  
 CTCAGAGAGCTTCTCCCTCGGAAGGTGCGTCTCTGACCCCGTGACCCTGCGTGAAGGATGCTGGCT  
 GCCCGCGGAACGGAGGCTTCAGAAGCAGCAGACCTCC

**ACGCGT**ACGCGGCCGCTCGAGCAGAAACTCATCTCAGAAGAGGATCTGGCAGCAAATGATATCCTGGATT  
 ACAAGGATGACGACGATAAGGTTTAA

**Protein Sequence:** >RC209639 protein sequence  
Red=Cloning site Green=Tags(s)

MPLLFLERFPWPSLRTYGLSGLALLGTIISAYRALSQPEAGPGEPDQLTASLQPEPPAPARPSAGGPRA  
RDVAQYLLSDSLFVWVLTACCVLMLVAKLIQCVFGLRVSERQHLKDKFWNFIFYKFFIFVGLNVQ  
TVEEVVMWCLWFAGLVFLHLMVQLCKDRFEYLSFSPTTPMSSHGRVLSLLVAMLLSCCGLAAVCSITGYT  
HGMHTLAFMAAESLLVTVRTAHVILRYVIHLWDLNHEGTWEGKGYVYYTDFVMELTLLSLDLMHIIHML  
LFGNIWLSMASLVIFMQLRYLFHEVQRRIRRHKNYLRVVGNMEARFAVATPEELAVNNDCAICWDSMQA  
ARKLPCGHLFHNSCLRSWLEQDTSCPTCRMSLNIADNNRVREEHQGENLDENLVPVAAAEGRPRLNQHNH  
FFHFDGSRIASWLPFSVEVMHTNILGITQASNSQLNAMAHQIQEMFPQVPYHLVLQDLQLTRSVEITT  
DNILEGRIQVPPFTQRSISRPNLSPVERPSSDQEEGETSAQTERVPLDLSPRLEETLDFGEVEVEPSE  
VEDFEARGSRFSKADERQRMVQRKDELLQARKRFLNKSSEDDAASESFLPSEGASSDPVTLRRRMLA  
AAAERRLQKQQTs

TRTRPLEQKLISEEDLAANDILDYKDDDDKV

**Chromatograms:** [https://cdn.origene.com/chromatograms/mk6776\\_f05.zip](https://cdn.origene.com/chromatograms/mk6776_f05.zip)

**Restriction Sites:** Sgfl-MluI

**Cloning Scheme:**



**ACCN:** NM\_001144

**ORF Size:** 1929 bp

**OTI Disclaimer:** Due to the inherent nature of this plasmid, standard methods to replicate additional amounts of DNA in E. coli are highly likely to result in mutations and/or rearrangements. Therefore, OriGene does not guarantee the capability to replicate this plasmid DNA. Additional amounts of DNA can be purchased from OriGene with batch-specific, full-sequence verification at a reduced cost. Please contact our customer care team at [custsupport@origene.com](mailto:custsupport@origene.com) or by calling 301.340.3188 option 3 for pricing and delivery.

The molecular sequence of this clone aligns with the gene accession number as a point of reference only. However, individual transcript sequences of the same gene can differ through naturally occurring variations (e.g. polymorphisms), each with its own valid existence. This clone is substantially in agreement with the reference, but a complete review of all prevailing variants is recommended prior to use. [More info](#)

**OTI Annotation:** This clone was engineered to express the complete ORF with an expression tag. Expression varies depending on the nature of the gene.

**Components:** The ORF clone is ion-exchange column purified and shipped in a 2D barcoded Matrix tube containing 10ug of transfection-ready, dried plasmid DNA (reconstitute with 100 ul of water).

**Reconstitution Method:**

1. Centrifuge at 5,000xg for 5min.
2. Carefully open the tube and add 100ul of sterile water to dissolve the DNA.
3. Close the tube and incubate for 10 minutes at room temperature.
4. Briefly vortex the tube and then do a quick spin (less than 5000xg) to concentrate the liquid at the bottom.
5. Store the suspended plasmid at -20°C. The DNA is stable for at least one year from date of shipping when stored at -20°C.

**Note:** Plasmids are not sterile. For experiments where strict sterility is required, filtration with 0.22um filter is required.

**RefSeq:** [NM\\_001144.6](#)

**RefSeq Size:** 3631 bp

**RefSeq ORF:** 1932 bp

**Locus ID:** 267

**UniProt ID:** [Q9UKV5](#)

**Cytogenetics:** 16q13

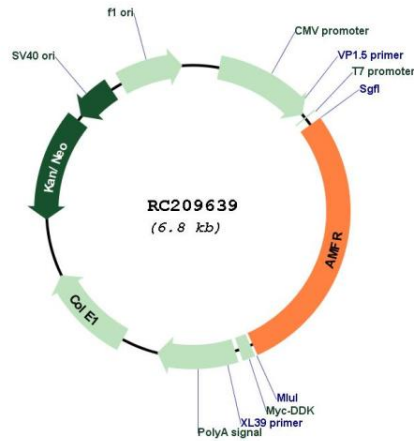
**Domains:** RING, CUE

**Protein Families:** Druggable Genome, Transmembrane

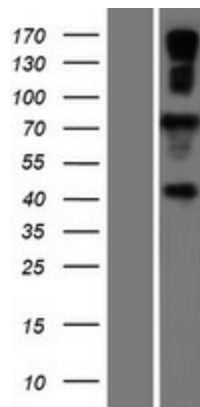
**MW:** 73 kDa

**Gene Summary:**

This locus encodes a glycosylated transmembrane receptor. Its ligand, autocrine motility factor, is a tumor motility-stimulating protein secreted by tumor cells. The encoded receptor is also a member of the E3 ubiquitin ligase family of proteins. It catalyzes ubiquitination and endoplasmic reticulum-associated degradation of specific proteins. [provided by RefSeq, Feb 2012]

**Product images:**


Circular map for RC209639



Western blot validation of overexpression lysate (Cat# [LY420107]) using anti-DDK antibody (Cat# [TA50011-100]). Left: Cell lysates from untransfected HEK293T cells; Right: Cell lysates from HEK293T cells transfected with RC209639 using transfection reagent MegaTran 2.0 (Cat# [TT210002]).