

Product datasheet for **RC209638**

COMMD4 (NM_017828) Human Tagged ORF Clone

Product data:

Product Type: Expression Plasmids
Product Name: COMMD4 (NM_017828) Human Tagged ORF Clone
Tag: Myc-DDK
Symbol: COMMD4
Mammalian Cell Selection: Neomycin
Vector: pCMV6-Entry (PS100001)
E. coli Selection: Kanamycin (25 ug/mL)
ORF Nucleotide Sequence: >RC209638 representing NM_017828
Red=Cloning site Blue=ORF Green=Tags(s)

TTTTGTAATACGACTCACTATAGGGCGGCCGGAATTCGTCGACTGGATCCGGTACCGAGGAGATCTGCC
GCC**CGATCGCC**

ATGAGGTTCCGGTCTGTGGTGATCTGGACTGTCCCGACTGGTCTGGCAGAAATCAGCAGCTGGCCA
AGATGTCTCTGTGAAGTTGCGGCTGCTCTGCAGCCAGGTAATAAGGAGCTGCTGGGACAGGGGATTGA
TTATGAGAAGATCCTGAAGCTCACGGCTGACGCCAAGTTGAGTCAGCGCATGTGAAGGCCACAGTGGCA
GTGCTGAGTTTCATCCTCTCCAGTGCAGCCAAAGCACAGTGTGATGGCGAATCCTGTCCAGTGAACCTC
AGCAGCTGGGGTGCCTAAAGAGCACGCGCCAGCCTGTGCCGCTGTTATGAGGAGAAGCAAAGCCCTT
GCAGAAGCACTTGCAGGCTGCAGCCTACGCATGAATAGGTTGGCAGGTGTGGGCTGGCGGTGGACTAC
ACCCTGAGCTCCAGCCTGCTGCAATCCGTGGAAGAGCCATGGTGACCTGCGGCTGGAGGTGGCAGCTG
CCCCAGGGACCCAGCCAGCCTGTTGCCATGTCCCTCTCAGCAGACAAGTTCAGGTCCTCTGGCAGA
ACTGAAGCAGGCCAGACCCTGATGAGCTCCCTGGGC

ACGCGTACGCGGCCGCTCGAGCAGAACTCATCTCAGAAGAGGATCTGGCAGCAATGATATCCTGGATT
ACAAGGATGACGACGATAAGGTTTAA

Protein Sequence: >RC209638 representing NM_017828
Red=Cloning site Green=Tags(s)

MRFRFCGLDCPDWVLAIEISTLAKMSSVKLRLLCSQVLKELLGQGIDYEKILKLTADAKFESGDVKATVA
VLSFILSSAAKHSVDGESLSSELQQLGLPKEHAASLRCRYEEKQSPLQKHLRVCSLRMNLAVGWRVDY
TLSSLLQSVVEEPMVHLRLEVAAPGTPAQPVAMSLSADKFQVLLAELKQAQTLMSLGL

TRTRPLEQKLISEEDLAANDILDYKDDDDKV

Chromatograms: https://cdn.origene.com/chromatograms/mg3411_b08.zip



[View online »](#)

Restriction Sites: SgfI-MluI

Cloning Scheme:



ACCN: NM_017828

ORF Size: 597 bp

OTI Disclaimer: The molecular sequence of this clone aligns with the gene accession number as a point of reference only. However, individual transcript sequences of the same gene can differ through naturally occurring variations (e.g. polymorphisms), each with its own valid existence. This clone is substantially in agreement with the reference, but a complete review of all prevailing variants is recommended prior to use. [More info](#)

OTI Annotation: This clone was engineered to express the complete ORF with an expression tag. Expression varies depending on the nature of the gene.

Components: The ORF clone is ion-exchange column purified and shipped in a 2D barcoded Matrix tube containing 10ug of transfection-ready, dried plasmid DNA (reconstitute with 100 ul of water).

- Reconstitution Method:
1. Centrifuge at 5,000xg for 5min.
 2. Carefully open the tube and add 100ul of sterile water to dissolve the DNA.
 3. Close the tube and incubate for 10 minutes at room temperature.
 4. Briefly vortex the tube and then do a quick spin (less than 5000xg) to concentrate the liquid at the bottom.
 5. Store the suspended plasmid at -20°C. The DNA is stable for at least one year from date of shipping when stored at -20°C.

RefSeq: [NM_017828.5](#)

RefSeq Size: 1948 bp

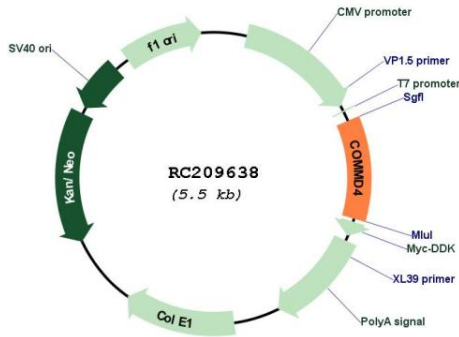
RefSeq ORF: 600 bp

Locus ID: 54939

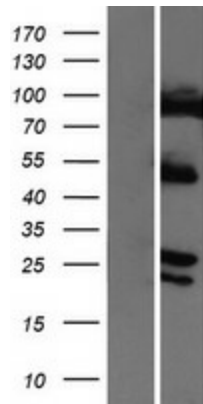
UniProt ID: [Q9H0A8](#)

Cytogenetics: 15q24.2
MW: 21.6 kDa
Gene Summary: May modulate activity of cullin-RING E3 ubiquitin ligase (CRL) complexes (PubMed:21778237). Down-regulates activation of NF-kappa-B.[UniProtKB/Swiss-Prot Function]

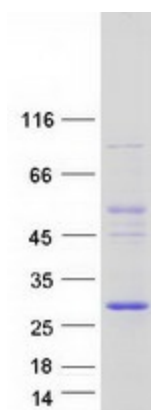
Product images:



Circular map for RC209638



Western blot validation of overexpression lysate (Cat# [LY413513]) using anti-DDK antibody (Cat# [TA50011-100]). Left: Cell lysates from untransfected HEK293T cells; Right: Cell lysates from HEK293T cells transfected with RC209638 using transfection reagent MegaTran 2.0 (Cat# [TT210002]).



Coomassie blue staining of purified COMMD4 protein (Cat# [TP309638]). The protein was produced from HEK293T cells transfected with COMMD4 cDNA clone (Cat# RC209638) using MegaTran 2.0 (Cat# [TT210002]).