

Product datasheet for **RC209637**

Hsp20 (HSPB6) (NM_144617) Human Tagged ORF Clone

Product data:

Product Type: Expression Plasmids
Product Name: Hsp20 (HSPB6) (NM_144617) Human Tagged ORF Clone
Tag: Myc-DDK
Symbol: Hsp20
Synonyms: HEL55; Hsp20; PPP1R91
Mammalian Cell Selection: Neomycin
Vector: pCMV6-Entry (PS100001)
E. coli Selection: Kanamycin (25 ug/mL)
ORF Nucleotide Sequence: >RC209637 ORF sequence
Red=Cloning site Blue=ORF Green=Tags(s)

TTTTGTAATACGACTCACTATAGGGCGGCCGGAATTCGTCGACTGGATCCGGTACCGAGGAGATCTGCC
GCC**CGATCGCC**

ATGGAGATCCCTGTGCCTGTGCAGCCGTCTTGCTGCGCCGCGCCTCGGCCCGTTGCTCGGACTTTCGG
CGCCCGGACGCCTCTTTGACCAGCGCTTCGCGGAGGGGCTGTGGAGGCCGAGCTGGCTGCGCTCTGCC
CACCACGCTCGCCCTACTACCTGCGCGCACCCAGCGTGGCGCTGCCCGTCCCGAGGTGCCGACGGAC
CCCGGCCACTTTTCGGTGTCTAGACGTGAAGCACTTCTCGCCGAGGAAATTGCTGTCAAGGTGGTGG
GCGAACACGTGGAGGTGCACGCGCGCCACGAGGAGCGCCCGGATGAGCACGGATTCGTGCGCGCGGAGTT
CCACCGTCTGACCGCTGCCCGCTGGCGTGGATCCGGCTGCCGTGACGTCGCGCTGTCCCGGAGGGC
GTCTGTCCATCCAGGCCGACAGCGTCGGCCAGGCCACCAGCCAGCCGAGCCAAG

ACGCGTACGCGGCCGCTCGAGCAGAACTCATCTCAGAAGAGGATCTGGCAGCAAATGATATCCTGGATT
ACAAGGATGACGACGATAAGGTTTAA

Protein Sequence: >RC209637 protein sequence
Red=Cloning site Green=Tags(s)
MEIPVPVQPSWLRRASAPLLGLSAPGRLFDQRFGEGLLEAELAALCPTTLAPYYLRAPSVALPVAQVPTD
PGHFSVLLDVKHFSPPEIAVKVVEGHEVHARHEERPDEHGFVAREFHRRYRLLPPGVDPAAVTSALSPEG
VLSIQAAPASAQAPPPAAAK

TRTRPLEQKLISEEDLAANDILDYKDDDDKV

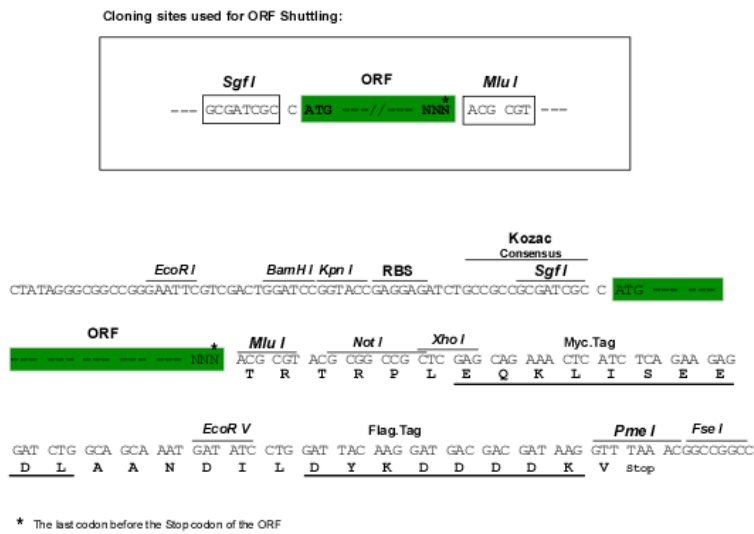
Chromatograms: https://cdn.origene.com/chromatograms/mk6085_f10.zip



[View online »](#)

Restriction Sites: SgfI-MluI

Cloning Scheme:



ACCN: NM_144617

ORF Size: 480 bp

OTI Disclaimer: The molecular sequence of this clone aligns with the gene accession number as a point of reference only. However, individual transcript sequences of the same gene can differ through naturally occurring variations (e.g. polymorphisms), each with its own valid existence. This clone is substantially in agreement with the reference, but a complete review of all prevailing variants is recommended prior to use. [More info](#)

OTI Annotation: This clone was engineered to express the complete ORF with an expression tag. Expression varies depending on the nature of the gene.

Components: The ORF clone is ion-exchange column purified and shipped in a 2D barcoded Matrix tube containing 10ug of transfection-ready, dried plasmid DNA (reconstitute with 100 ul of water).

Reconstitution Method:

1. Centrifuge at 5,000xg for 5min.
2. Carefully open the tube and add 100ul of sterile water to dissolve the DNA.
3. Close the tube and incubate for 10 minutes at room temperature.
4. Briefly vortex the tube and then do a quick spin (less than 5000xg) to concentrate the liquid at the bottom.
5. Store the suspended plasmid at -20°C. The DNA is stable for at least one year from date of shipping when stored at -20°C.

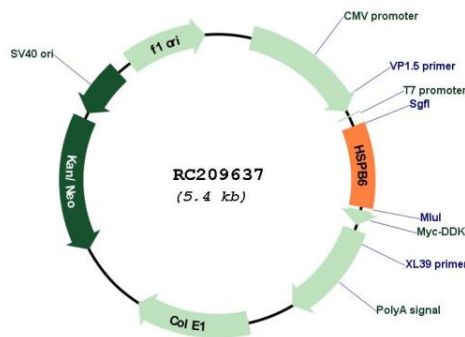
RefSeq: [NM_144617.3](#)

RefSeq Size: 1480 bp

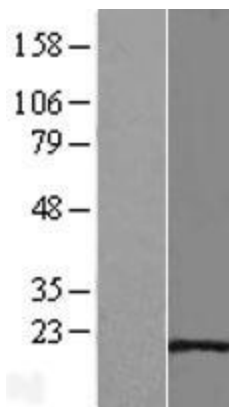
RefSeq ORF: 483 bp

Locus ID: 126393

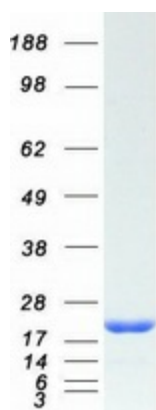
UniProt ID: [O14558](#)
Cytogenetics: 19q13.12
Domains: HSP20
MW: 17.2 kDa
Gene Summary: This locus encodes a heat shock protein. The encoded protein likely plays a role in smooth muscle relaxation. [provided by RefSeq, Jan 2012]

Product images:


Circular map for RC209637



Western blot validation of overexpression lysate (Cat# [LY408252]) using anti-DDK antibody (Cat# [TA50011-100]). Left: Cell lysates from untransfected HEK293T cells; Right: Cell lysates from HEK293T cells transfected with RC209637 using transfection reagent MegaTran 2.0 (Cat# [TT210002]).



Coomassie blue staining of purified HSPB6 protein (Cat# [TP309637]). The protein was produced from HEK293T cells transfected with HSPB6 cDNA clone (Cat# RC209637) using MegaTran 2.0 (Cat# [TT210002]).