

Product datasheet for RC209629

ARHGAP27 (NM_174919) Human Tagged ORF Clone

Product data:

Product Type:	Expression Plasmids
Product Name:	ARHGAP27 (NM_174919) Human Tagged ORF Clone
Tag:	Myc-DDK
Symbol:	ARHGAP27
Synonyms:	CAMGAP1; PP905; SH3D20; SH3P20
Mammalian Cell Selection:	Neomycin
Vector:	pCMV6-Entry (PS100001)
E. coli Selection:	Kanamycin (25 ug/mL)
ORF Nucleotide Sequence:	>RC209629 representing NM_174919 Red=Cloning site Blue=ORF Green=Tags(s)

TTTTGTAATACGACTCACTATAGGGCGGCCGGAATTCGTGCGACTGGATCCGGTACCGAGGAGATCTGCC
GCC**CGCATCGC**

ATGGCGGCGGACGTGGTGGGGACGTGTACGTGCTGGTGGAGCACCCCTTCGAGTACACCGGCAAGGACG
GGCGCCGCGTGGCCATCCGGCCGAATGAGCGCTACCGGCTGCTGCGGCGCAGCACCGAGCACTGGTGGCA
CGTGGCGCGTGAGCCCGGCGGCCCTTCTACCTGCCTGCGCAGTACGTGCGGAGCTGCCCGCGCTG
GGCAACCCTGCCCGCGCGCCGAGGTCACCCACCGAGCCCCGCGGCCCTGAGCCGCTCGCCTACG
ACTACCGTGTGTGAGCGCGGCGGACCGCGGCCCGGACCGGCGCCCCGAGGAGTCCGGAGGCCGAGC
CAGCTCCCTGTGCGGCCCTGCGCAACGCGGCGCCGCGACCCAGCGCAGCAGCCTGGCGCCCGGCCTGCCA
GCCTGCCTGTACCTGCGGCCCGCGGCGCCGTCGCGGCCCGCGCAGTCCCTGAACGACCTGGCCTGCGCCG
CCGTCTCGCTCCCGCCGGCCTCCTAGGAAGCAGCGGCAGCTTCAAGGCCTGCAGCGTGGCGGGCTCCTG
GGTGTGCCCGGCGCTCTGGCGCGCAGCGACTCAGAGAACGTCTACGAGGTATCCAGGACTTGCACGTC
CCGCCCGGAGGAGCGCAGAGCAGGTACCTCCCCGGGCGCTGGGCGCGGAGGCGGGTGGCGCGCTA
GGGACCGCGCCCGCAGGACCGGGGCGCAAGGAGACCCGCTCCGCTCAGCGTCGGGCACGACGCCACCC
TCTGTCCGAAGACTTCGGA

ACGCGTACGCGGCCGCTCGAGCAGAACTCATCTCAGAAGAGGATCTGGCAGCAAATGATATCCTGGATT
ACAAGGATGACGACGATAAGGTTTAA



[View online »](#)

Protein Sequence: >RC209629 representing NM_174919
Red=Cloning site Green=Tags(s)

MAADVVGDVYVLVEHPFEYTGKDGRRVAIRPNERYRLLRRSTEHWWHRREPGRPFYLPAAQYVRELPAL
 GNPAAPPGPHPSAAPELAYDYRFVSAATAGPDGAPEESGGRASSLCGPAQRGAATQRSSLAPGLP
 ACLYLPAAPVRPAQSLNDLACAAVSPPAGLLGSSGSFKACSVAGSWVCPRLARSDSENVYEVIQDLHV
 PPPEESAEQVPPRALGRGGWRARDRARTTEPRKTRSAQRRARRPPLSEDFG

TRTRPLEQKLISEEDLAANDILDYKDDDDKV

Chromatograms: https://cdn.origene.com/chromatograms/mk8114_b02.zip

Restriction Sites: SgfI-MluI

Cloning Scheme:



ACCN: NM_174919

ORF Size: 789 bp

OTI Disclaimer: The molecular sequence of this clone aligns with the gene accession number as a point of reference only. However, individual transcript sequences of the same gene can differ through naturally occurring variations (e.g. polymorphisms), each with its own valid existence. This clone is substantially in agreement with the reference, but a complete review of all prevailing variants is recommended prior to use. [More info](#)

OTI Annotation: This clone was engineered to express the complete ORF with an expression tag. Expression varies depending on the nature of the gene.

Components: The ORF clone is ion-exchange column purified and shipped in a 2D barcoded Matrix tube containing 10ug of transfection-ready, dried plasmid DNA (reconstitute with 100 ul of water).

Reconstitution Method:

1. Centrifuge at 5,000xg for 5min.
2. Carefully open the tube and add 100ul of sterile water to dissolve the DNA.
3. Close the tube and incubate for 10 minutes at room temperature.
4. Briefly vortex the tube and then do a quick spin (less than 5000xg) to concentrate the liquid at the bottom.
5. Store the suspended plasmid at -20°C. The DNA is stable for at least one year from date of shipping when stored at -20°C.

RefSeq: [NM_174919.3](#), [NP_777579.2](#)

RefSeq Size: 1394 bp

RefSeq ORF: 792 bp

Locus ID: 201176

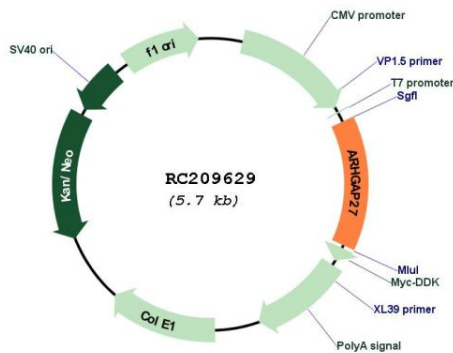
UniProt ID: [Q6ZUM4](#)

Cytogenetics: 17q21.31

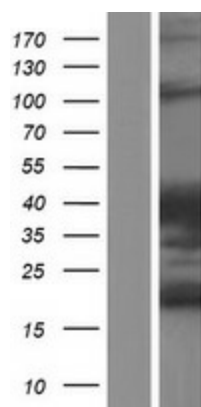
MW: 28.2 kDa

Gene Summary: This gene encodes a member of a large family of proteins that activate Rho-type guanosine triphosphate (GTP) metabolizing enzymes. The encoded protein may play a role in clathrin-mediated endocytosis. Alternatively spliced transcript variants encoding multiple isoforms have been observed for this gene. [provided by RefSeq, Aug 2013]

Product images:



Circular map for RC209629



Western blot validation of overexpression lysate (Cat# [LY406401]) using anti-DDK antibody (Cat# [TA50011-100]). Left: Cell lysates from untransfected HEK293T cells; Right: Cell lysates from HEK293T cells transfected with RC209629 using transfection reagent MegaTran 2.0 (Cat# [TT210002]).