

Product datasheet for RC209626

CIAPIN1 (NM_020313) Human Tagged ORF Clone

Product data:

Product Type:	Expression Plasmids
Product Name:	CIAPIN1 (NM_020313) Human Tagged ORF Clone
Tag:	Myc-DDK
Symbol:	CIAPIN1
Synonyms:	Anamorsin; CIAE2; DRE2; PRO0915
Mammalian Cell Selection:	Neomycin
Vector:	pCMV6-Entry (PS100001)
E. coli Selection:	Kanamycin (25 ug/mL)
ORF Nucleotide Sequence:	>RC209626 ORF sequence Red=Cloning site Blue=ORF Green=Tags(s)

TTTTGTAATACGACTCACTATAGGGCGGCCGGAATTCGTCGACTGGATCCGGTACCGAGGAGATCTGCC
GCC**CGATCGC**C

ATGGCAGATTTTGGGATCTCTGCTGGCCAGTTTGTGGCAGTGGTCTGGGATAAGTCATCCCCAGTGGAGG
CTCTGAAAGGTCTGGTGGATAAGCTTCAAGCGTTAACCGGCAATGAGGGCCGCTGTCTGTGAAAAACAT
CAAGCAGCTGTTGCAATCTGCCACAAAGAATCCAGCTTTGACATTATTTGTGAGGTTAGTCCCAGGA
AGCACCCTCTGCACAGTCTGAGATTTGGCTGAAATCGCCCGATCCTTCGGCCTGGTGGATGTCTTT
TTCTGAAGGAGCCAGTAGAGACAGCTGTAGATAACAATAGCAAAGTGAAGACAGCATCTAAGCTGTGTT
AGCCCTGACTCTTTCTGGTCTTTGTGGAAGTGAAAGAGCTGCAGCGGGAGCCCTAACCCCTGAGGAAGTA
CAGTCTGTTTCGAGAACACCTTGGTCATGAAAGTGACAACCTGCTGTTTGTTCAGATCACAGGCAAAAAAC
CAAACCTTTGAAGTGGGTTCTTCTAGGCAGCTTAAGCTTTCCATCACCAAGAAGTCTTCTCCTTCAGTGAA
ACCTGCTGTGGACCCTGCTGCTGCCAAGCTGTGGACCCTCTCAGCCAACGATATGGAGGACGACAGCATG
GATCTCATTGACTCAGATGAGCTGCTGGATCCAGAAGATTTGAAGAAGCCAGATCCAGCTTCCCTGCGGG
CTGCTTCTGTGGGAAGGAAAAAGAGGAAGGCTGTAAGAAGTGCACCTGTGGCCTTGCCGAAGAAGT
GGAAAAAGAGAAGTCAAGGGAACAGATGAGCTCCCAACCAAGTCAGCTTGTGAAACTGCTACCTGGGC
GATGCCCTCCGCTGTGCCAGCTGCCCTACCTTGGGATGCCAGCCTTCAAACCTGGGAAAAAGGTGCTTC
TGAGTGATAGCAATCTTCATGATGCC

ACGCGTACGCGGCCGCTCGAGCAGAAACTCATCTCAGAAGAGGATCTGGCAGCAAATGATATCCTGGATT
ACAAGGATGACGACGATAAGGTTTAA



[View online »](#)

Protein Sequence: >RC209626 protein sequence
Red=Cloning site Green=Tags(s)

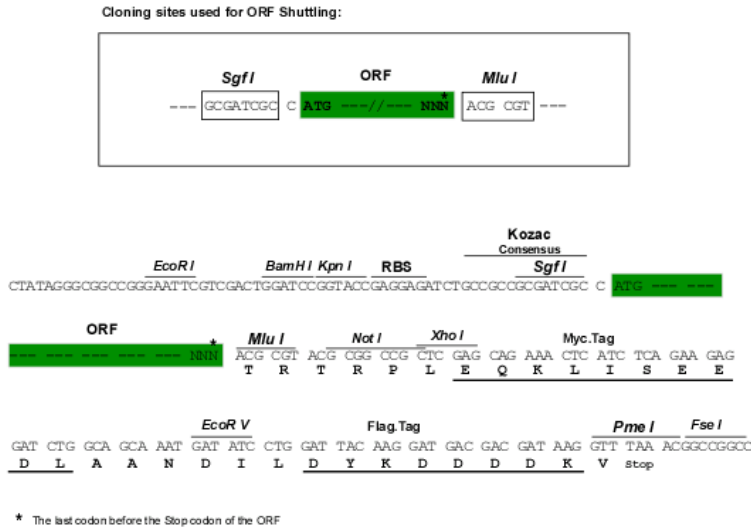
MADFGISAGQFVAVVWDKSSPVEALKGLVDKLQALTGNEGRVSVENIKQLLQSAHKESSFDIILSGLVPG
 STTLHSAEILAEIARILRPGGCLFLKEPVETAVDNNKVKTASKLCSALTL SGLVEVKELQREPLTPEEV
 QSVREHLGHESDNLFLVQITGKKPNFEVGSRRQLKLSITKKSSPSVKPAVDPAAAKLWTL SANDMEDDSM
 DLIDSDELLDPEDLKKPDPASLRAASCGEKGRKACKNCTCGLAELEKEKSREQMSSQPKSACGNCYL
 G DAFRCASCOPYLGMPAFKPGKVLVLLSDSNLHDA

TRTRPLEQKLISEEDLAANDILDYKDDDDKV

Chromatograms: https://cdn.origene.com/chromatograms/mk6366_f10.zip

Restriction Sites: SgfI-MluI

Cloning Scheme:



ACCN: NM_020313

ORF Size: 936 bp

OTI Disclaimer: The molecular sequence of this clone aligns with the gene accession number as a point of reference only. However, individual transcript sequences of the same gene can differ through naturally occurring variations (e.g. polymorphisms), each with its own valid existence. This clone is substantially in agreement with the reference, but a complete review of all prevailing variants is recommended prior to use. [More info](#)

OTI Annotation: This clone was engineered to express the complete ORF with an expression tag. Expression varies depending on the nature of the gene.

Components: The ORF clone is ion-exchange column purified and shipped in a 2D barcoded Matrix tube containing 10ug of transfection-ready, dried plasmid DNA (reconstitute with 100 ul of water).

Reconstitution Method:

1. Centrifuge at 5,000xg for 5min.
2. Carefully open the tube and add 100ul of sterile water to dissolve the DNA.
3. Close the tube and incubate for 10 minutes at room temperature.
4. Briefly vortex the tube and then do a quick spin (less than 5000xg) to concentrate the liquid at the bottom.
5. Store the suspended plasmid at -20°C. The DNA is stable for at least one year from date of shipping when stored at -20°C.

RefSeq: [NM_020313.4](#)

RefSeq Size: 2106 bp

RefSeq ORF: 939 bp

Locus ID: 57019

UniProt ID: [Q6FI81](#)

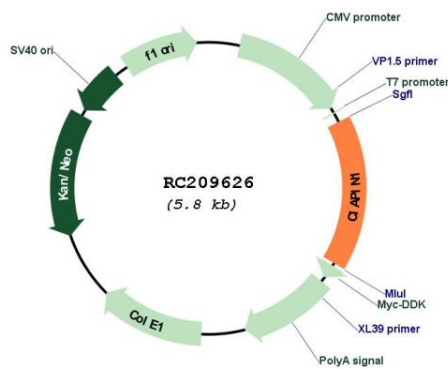
Cytogenetics: 16q21

Domains: DUF689

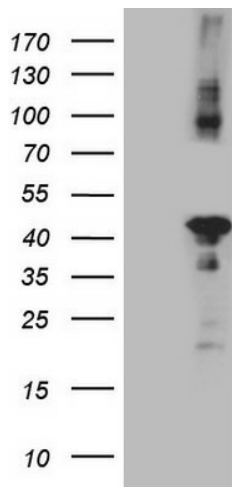
MW: 33.6 kDa

Gene Summary: CIAPIN1 is a cytokine-induced inhibitor of apoptosis with no relation to apoptosis regulatory molecules of the BCL2 (MIM 151430) or CASP (see MIM 147678) families. Expression of CIAPIN1 is dependent on growth factor stimulation (Shibayama et al., 2004 [PubMed 14970183]).[supplied by OMIM, Mar 2008]

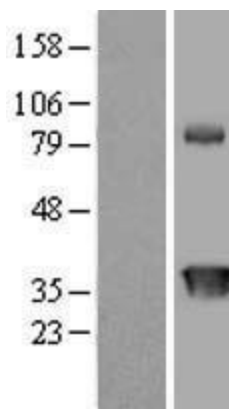
Product images:



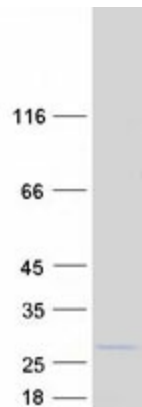
Circular map for RC209626



HEK293T cells were transfected with the pCMV6-ENTRY control (Cat# [PS100001], Left lane) or pCMV6-ENTRY CIAPIN1 (Cat# RC209626, Right lane) cDNA for 48 hrs and lysed. Equivalent amounts of cell lysates (5 ug per lane) were separated by SDS-PAGE and immunoblotted with anti-CIAPIN1 (Cat# [TA808812])(1:2000). Positive lysates [LY412554] (100ug) and [LC412554] (20ug) can be purchased separately from OriGene.



Western blot validation of overexpression lysate (Cat# [LY412554]) using anti-DDK antibody (Cat# [TA50011-100]). Left: Cell lysates from untransfected HEK293T cells; Right: Cell lysates from HEK293T cells transfected with RC209626 using transfection reagent MegaTran 2.0 (Cat# [TT210002]).



Coomassie blue staining of purified CIAPIN1 protein (Cat# [TP309626]). The protein was produced from HEK293T cells transfected with CIAPIN1 cDNA clone (Cat# RC209626) using MegaTran 2.0 (Cat# [TT210002]).