

Product datasheet for RC209624

FBXL22 (NM_203373) Human Tagged ORF Clone

Product data:

Product Type:	Expression Plasmids
Product Name:	FBXL22 (NM_203373) Human Tagged ORF Clone
Tag:	Myc-DDK
Symbol:	FBXL22
Synonyms:	Fbl22
Mammalian Cell Selection:	Neomycin
Vector:	pCMV6-Entry (PS100001)
E. coli Selection:	Kanamycin (25 ug/mL)
ORF Nucleotide Sequence:	>RC209624 ORF sequence Red=Cloning site Blue=ORF Green=Tags(s)

TTTTGTAATACGACTCACTATAGGGCGCCGGGAATTCGTCGACTGGATCCGGTACCGAGGAGATCTGCC
GCC**CGATCGCC**

ATGCACATAACCCAGCTCAACCGGGAGTGCCTGCTGCACCTCTTCTCCTCCTAGACAAGGACAGCAGGA
AGAGCCTTGCCAGGACCTGCTCCAGCTCCACGACGTGTTTGAGGACCCCGCACTCTGGTCCCTGCTGCA
CTTCCGTTCCCTCACTGAACTCCAGAAGGACAATTCTCCTGGGCCCGCACTCCGCAGCCTCTCCATC
TGCTGGCACTCCAGCCGCTGCAGGTGTGACGATTGAGGACTGGCTCAAGAGTGCCTTCCAGAGAAGCA
TCTGCAGCCGGCACGAGACCTGGTCAATGATTTCTCCTCCGGGTGTGCGACAGGCTTTCTGCTGTGCG
CTCCCCACGGAGGCGGGAGGCGCCTGCACCGTCTCGGGGACTCCGATCGCCGTTGGACCGAAATCACCT
CGGTGGGAGGACCTGACCACTCGGAGTTCGCCGACTTGCCTCGGGGTGACGGGGGCCAGGGTCCCG
CGCGCAGGGGTCTGGGAGCCTCCGGGCGGAGCGACCCAGCGAGACCCCGCCGGCTCCCGGAGTGTCTG
GGGACCGCACCTCCAGGAGCCCCGGTGGTGTCTCGGTGAAGCAGGAGGAGGGGAAGCAGGGGCGCAGC
GGCAGAAGGAGCCACCGAGCCGCTCCTCCTTGGCGTTTGGCCGCACGCGCTGTCGCCGCCACCTTTC
CTGGGCGGATGCGTTCCCGCAG

ACGCGTACGCGGCCGCTCGAGCAGAACTCATCTCAGAAGAGGATCTGGCAGCAAATGATATCCTGGATT
ACAAGGATGACGACGATAAGGTTTAA



[View online »](#)

Protein Sequence: >RC209624 protein sequence
 Red=Cloning site Green=Tags(s)

MHITQLNRECLLHLFSFLDKDSRSLARTCSQLHDVFDPALWLLHFRSLTELQKDNFLLGPLRSLSI
 CWHSSRVQVCSIEDWLKSAFQRSICSRHESLVNDFLLRVCDRLSAVRSPPRRREAPAPSSGTPIAVGPKSP
 RWGGPDHSEFADLRSGVTGAAAAARRGLGSLRAERPSETPPAPGVSWGPPPPGAPVVISVKQEEGKQGR
 GRRSHRAAPPCGFARTRVCPPTFPGADAFPQ

TRTRPLEQKLISEEDLAANDILDYKDDDDKV

Chromatograms: https://cdn.origene.com/chromatograms/mk6366_d10.zip

Restriction Sites: SgfI-MluI

Cloning Scheme:

Cloning sites used for ORF Shuttling:



* The last codon before the Stop codon of the ORF

ACCN: NM_203373

ORF Size: 723 bp

OTI Disclaimer: The molecular sequence of this clone aligns with the gene accession number as a point of reference only. However, individual transcript sequences of the same gene can differ through naturally occurring variations (e.g. polymorphisms), each with its own valid existence. This clone is substantially in agreement with the reference, but a complete review of all prevailing variants is recommended prior to use. [More info](#)

OTI Annotation: This clone was engineered to express the complete ORF with an expression tag. Expression varies depending on the nature of the gene.

Components: The ORF clone is ion-exchange column purified and shipped in a 2D barcoded Matrix tube containing 10ug of transfection-ready, dried plasmid DNA (reconstitute with 100 ul of water).

Reconstitution Method:

1. Centrifuge at 5,000xg for 5min.
2. Carefully open the tube and add 100ul of sterile water to dissolve the DNA.
3. Close the tube and incubate for 10 minutes at room temperature.
4. Briefly vortex the tube and then do a quick spin (less than 5000xg) to concentrate the liquid at the bottom.
5. Store the suspended plasmid at -20°C. The DNA is stable for at least one year from date of shipping when stored at -20°C.

RefSeq: [NM_203373.1](#), [NP_976307.1](#)

RefSeq Size: 1570 bp

RefSeq ORF: 744 bp

Locus ID: 283807

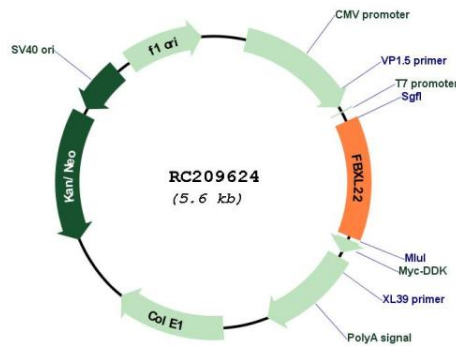
UniProt ID: [Q6P050](#)

Cytogenetics: 15q22.31

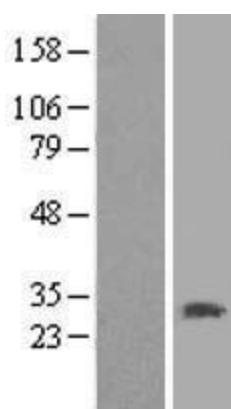
MW: 26.5 kDa

Gene Summary: This gene encodes a member of the F-box protein family. This F-box protein interacts with S-phase kinase-associated protein 1A and cullin in order to form SCF complexes which function as ubiquitin ligases.[provided by RefSeq, Sep 2010]

Product images:



Circular map for RC209624



Western blot validation of overexpression lysate (Cat# [LY404315]) using anti-DDK antibody (Cat# [TA50011-100]). Left: Cell lysates from untransfected HEK293T cells; Right: Cell lysates from HEK293T cells transfected with RC209624 using transfection reagent MegaTran 2.0 (Cat# [TT210002]).