

Product datasheet for **RC209620**

MDMX (MDM4) (NM_002393) Human Tagged ORF Clone

Product data:

Product Type:	Expression Plasmids
Product Name:	MDMX (MDM4) (NM_002393) Human Tagged ORF Clone
Tag:	Myc-DDK
Symbol:	MDMX
Synonyms:	BMFS6; HDMX; MDMX; MRP1
Mammalian Cell Selection:	Neomycin
Vector:	pCMV6-Entry (PS100001)
E. coli Selection:	Kanamycin (25 ug/mL)



[View online »](#)

ORF Nucleotide Sequence:

>RC209620 representing NM_002393
 Red=Cloning site Blue=ORF Green=Tags(s)

TTTTGTAATACGACTCACTATAGGGCGGCCGGAATTCGTCGACTGGATCCGGTACCGAGGAGATCTGCC
 GCC**GCGATCGCC**

ATGACATCATTTTCCACCTCTGCTCAGTGTCAACATCTGACAGTCTTGCAGGATCTCTCTGGACAAA
 TCAATCAGGTACGACAAAACCTGCCGCTTTTGAAGATTTGCATGCAGCAGGTGCCAAGGTGAAATGTT
 CACTGTTAAAGAGGTCATGCACTATTTAGGTGAGTACATAATGGTGAAGCAACTTTATGATCAGCAGGAG
 CAGCATATGGTATATTGTGGTGGAGATCTTTGGGAGAACTACTGGGACGTGAGACTTCTCCGTGAAAG
 ACCCAAGCCCTCTATGATATGCTAAGAAAGAATCTTGTCACTTTAGCCACTGCTACTACAGATGCTGC
 TCAGACTCTCGCTCTCGCACAGGATCACAGTATGGATATCCAAGTCAAGACCAACTGAAGCAAAGTGCA
 GAGGAAAGTTCCTCCAGAAAAAGAACTACAGAAGACGATATCCACACTGCCTACCTCAGAGCATA
 AATGCATACATTCTAGAGAAGATGAAGACTTAATTGAAAATTTAGCCCAAGATGAAACATCTAGGCTGGA
 CCTTGGATTTGAGGAGTGGGATGTAGCTGGCCTGCCTTGGTGGTTTTTAGGAACTTGAGAAGCAACTAT
 ACACCTAGAAGTAATGGCTCAACTGATTTACAGACAAATCAGGATGTGGTACTGCCATTGTTTCAGATA
 CTACAGATGACTTGTGGTTTTGAATGAGTCAGTATCAGAGCAGTTAGGTGTTGGAATAAAAAGTTGAAGC
 TGCTGATACTGAACAAACAAGTGAAGAAGTAGGAAAAGTAAAGTGACAAAAAGGTGATTGAAGTGGAAAA
 AATGATGACCTGGAGGACTCTAAGTCTTAAGTATGATACCGATGTAGAGGTTACCTCTGAGGATGAGT
 GGCAGTGTACTGAATGCAAGAAATTTAACTCTCCAAGCAAGAGGACTGTTTTCGTTGTTGGCCTTGAG
 GAAGGATTGGTATTCAGATTGTTCAAAGTTAACCCATTCTCTCCACGTCTGATCACTGCCATACCT
 GAAAAGGAAAAATGAAGGAAATGATGTCCCTGATTGTGCGAAGAACCATTTCCGCTCCTGTCGTTAGACCTA
 AAGATGCGTATATAAAGAAAGAAAACTCAAACCTTTTGGATCCCTGCAACTCAGTGAATCTTGGATTT
 GGCTCACAGTTCTGAAAGCCAAGAGACCATCTCAAGCATGGGAGAACAGTTAGATAACCTTTCTGAACAG
 AGAACAGATACAGAAAACATGGAGGATTGCCAGAACTCTTTGAAGCCATGTAGCTTATGTGAGAAAAGAC
 CACGAGACGGGAACATTATTCATGGAAGGACGGGCCATCTGTCACTTGTTCCTGTCGACAGAAAGACT
 AAAGAAGGCTGGGGCTTCATGCCCTATTTGCAAGAAAGAGATTACAGCTGGTTATTAAGGTTTTTATAGCA

ACGCGTACGCGGCCGCTCGAGCAGAAACTCATCTCAGAAGAGGATCTGGCAGCAATGATATCCTGGATT
 ACAAGGATGACGACGATAAGGTTTAA

Protein Sequence:

>RC209620 representing NM_002393
 Red=Cloning site Green=Tags(s)

MTSFSTSAQCSTSDSACRISPGQINQVRPKLPLKILHAAGAQQEMFTVKEVMHYLGQYIMVKQLYDQQE
 QHMVYCGDLLGELLGRQSFVSKDPSPLYDMLRKNLVLATATDAAQTLALAQDHSMDIPSQDLKQSA
 EESSTSRKRTTEDDIPTLPTSEHKCIHSREDEDLIENLAQDETSRLDLGFEEDVAGLPWWFLGNLRSNY
 TPRSNGSTDLQTNQDVGTAIVSDDTDDLWFLNESVSEQLGVGIKVEAADTEQTSEEVGKVSDDKVIKVEVK
 NDDLEDSKSLSDTDVEVTSEDEWQCTECKKFNSPSKRYCFRCWALRKDWYSDCSKLTSLSTSDITAIP
 EKENEENGVDPDCRRTISAPVVRPKDAYIKKENSFLDPCNSVEFLDLAHSSESQETISSMGEQLDNLSEQ
 RTDTENMEDCQNLKPCSLCEKRPRDGNIIHGRTGHLVTCFHCARRLKKAGASCPICKKEIQLVIKVFIA

TRTRPLEQKLISEEDLAANDILDYKDDDDKV

Chromatograms:

https://cdn.origene.com/chromatograms/mg2522_g01.zip

Restriction Sites:

Sgfl-Mlul

Cloning Scheme:

ACCN: NM_002393

ORF Size: 1470 bp

OTI Disclaimer: Due to the inherent nature of this plasmid, standard methods to replicate additional amounts of DNA in E. coli are highly likely to result in mutations and/or rearrangements. Therefore, OriGene does not guarantee the capability to replicate this plasmid DNA. Additional amounts of DNA can be purchased from OriGene with batch-specific, full-sequence verification at a reduced cost. Please contact our customer care team at custsupport@origene.com or by calling 301.340.3188 option 3 for pricing and delivery.

The molecular sequence of this clone aligns with the gene accession number as a point of reference only. However, individual transcript sequences of the same gene can differ through naturally occurring variations (e.g. polymorphisms), each with its own valid existence. This clone is substantially in agreement with the reference, but a complete review of all prevailing variants is recommended prior to use. [More info](#)

OTI Annotation: This clone was engineered to express the complete ORF with an expression tag. Expression varies depending on the nature of the gene.

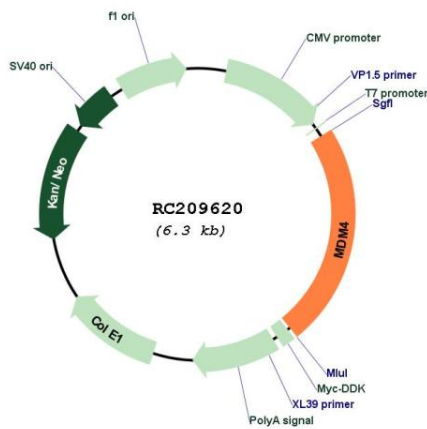
Components: The ORF clone is ion-exchange column purified and shipped in a 2D barcoded Matrix tube containing 10ug of transfection-ready, dried plasmid DNA (reconstitute with 100 ul of water).

- Reconstitution Method:**
1. Centrifuge at 5,000xg for 5min.
 2. Carefully open the tube and add 100ul of sterile water to dissolve the DNA.
 3. Close the tube and incubate for 10 minutes at room temperature.
 4. Briefly vortex the tube and then do a quick spin (less than 5000xg) to concentrate the liquid at the bottom.
 5. Store the suspended plasmid at -20°C. The DNA is stable for at least one year from date of shipping when stored at -20°C.

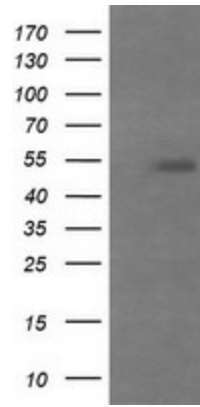
RefSeq:	NM_002393.5
RefSeq Size:	2554 bp
RefSeq ORF:	1473 bp
Locus ID:	4194
UniProt ID:	O15151
Cytogenetics:	1q32.1
Domains:	SWIB
Protein Families:	Druggable Genome, Transcription Factors
Protein Pathways:	p53 signaling pathway
MW:	54.7 kDa

Gene Summary: This gene encodes a nuclear protein that contains a p53 binding domain at the N-terminus and a RING finger domain at the C-terminus, and shows structural similarity to p53-binding protein MDM2. Both proteins bind the p53 tumor suppressor protein and inhibit its activity, and have been shown to be overexpressed in a variety of human cancers. However, unlike MDM2 which degrades p53, this protein inhibits p53 by binding its transcriptional activation domain. This protein also interacts with MDM2 protein via the RING finger domain, and inhibits the latter's degradation. So this protein can reverse MDM2-targeted degradation of p53, while maintaining suppression of p53 transactivation and apoptotic functions. Alternatively spliced transcript variants encoding different isoforms have been noted for this gene. [provided by RefSeq, Feb 2011]

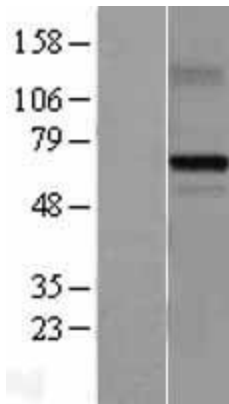
Product images:



Circular map for RC209620



HEK293T cells were transfected with the pCMV6-ENTRY control (Cat# [PS100001], Left lane) or pCMV6-ENTRY MDM4 (Cat# RC209620, Right lane) cDNA for 48 hrs and lysed. Equivalent amounts of cell lysates (5 ug per lane) were separated by SDS-PAGE and immunoblotted with anti-MDM4 (Cat# [TA505706]). Positive lysates [LY400856] (100ug) and [LC400856] (20ug) can be purchased separately from OriGene.



Western blot validation of overexpression lysate (Cat# [LY400856]) using anti-DDK antibody (Cat# [TA50011-100]). Left: Cell lysates from untransfected HEK293T cells; Right: Cell lysates from HEK293T cells transfected with RC209620 using transfection reagent MegaTran 2.0 (Cat# [TT210002]).