

Product datasheet for **RC209617**

DZIP3 (NM_014648) Human Tagged ORF Clone

Product data:

Product Type:	Expression Plasmids
Product Name:	DZIP3 (NM_014648) Human Tagged ORF Clone
Tag:	Myc-DDK
Symbol:	DZIP3
Synonyms:	hRUL138; PPP1R66; UURF2
Mammalian Cell Selection:	Neomycin
Vector:	pCMV6-Entry (PS100001)
E. coli Selection:	Kanamycin (25 ug/mL)
ORF Nucleotide Sequence:	>RC209617 representing NM_014648 Red=Cloning site Blue=ORF Green=Tags(s)

TTTTGTAATACGACTCACTATAGGGCGGCCGGAATTCGTCGACTGGATCCGGTACCGAGGAGATCTGCC
GCC**CGATCGCC**

ATGGATTCTCTACCAGATGAATTTTTGTGAGGCATCCTGCTGTGGAGGATCAGAGGAAGGAAGAACTG
AGAATAAGCTAGAAAAATCATCTGGTCAACTGAACAAACAGGAAAATGACATACCTACTGATCTTGTCCTC
TGTTAACCTACTATTAGAAGTGAAGAAGTTATTAATGCAATTAATACTCTACCAAAAGGTGGTTCCT
CACATTAAGAAGTCTTACAAGAAGATTTTCTTCCAACTATGCAGAGAGAAGTTCAGCTAACAGCC
AGAATGGTGAGGAAATTGTTCTGCTTTGACTTTACGTTTCTTGATTACACAGCTAGAAGCAGCACTTAG
GAACATTCAGCTGGCAATTATACCGCACACCAGATTAATATTGGTTATTATTTGACACTGTTTTTA
TATGGAGTAGCACTCACTGAAAGAGGAAAGAAAGAGGATTATACAGAAGCTGAGAATAAATTTCTGGTGA
TGAAGATGATGATCCAAGAAAATGAAATTTGTGAAAATTTATGTCTTTAGTTTATTTTGGACGTGGTTT
ACTGCGATGTGCTCAAAAGAGATATAATGGAGGACTGCTAGAATTTCAAAAAGCTTACAAGAAATTGGA
GACAAAATGACCATTGGTTTGACATAGATCCTACAGAAGATGAAGATTTACCTACAACCTTTAAAGATC
TTCTTAATAATTTTATCAAGACAACCTGAAAGCAATATAATGAAGCAGACGATTTGTAGTTACCTAGATTG
TGAACGATCTTGTGAAGCTGACATTTTGAAGAACCAGTTATAAGGGATTTTTTCAGTTAATGTGCAGT
AAAAGTTGCTGTGTTTATTTCCATAAAAATTTGCTGGAAAAGTTCAAGAATTTAAAGTATCCAGGTGAAA
ATGATCAGAGTTTTAGTGGGAAAAAATGTTTGAAGGAAGGATGTACAGGTGACATGGTAAGGATGCTGCA
ATGTGATGTACCTGGAATTGTTAAAATTTGTTTGAAGTTGTGAGAAAAGGATGAATATATACCATTGAA
AATTTAGGAGCAAGTTATAGAAAGTTGATATCTCTGAAAATAACTGATACTGATATAAGACCGAAGATCA
GTTTAAAATTTAATACAAAAGATGAAATGCCTATCTTCAAGCTTGATTATAAATTTTCTATCATCTGCT
TCATATAATTATTATTCTGGTACTGACATTGTTGACAAAATTTTGTGAGGCTATGCCACCTCCTCTT
TTGAAAAAAGAGCTTCTTATACACAAGAATGTGCTGGAATCCTACTACAACCATCTTTGGACCAATCATC
CTTTGGGTGGATCATGGCATCTGCTTATCCTCCTAACAAGGAGTTACCGCAATCCAACAGTTTGACTT
ATGCCCTCTGTAGCTCTATAAAACATTTAAATGTGTTCCCTGCACCAAAAAAGGATGGAATATGAA



[View online >](#)

CCGCCATCTTCTGACATCTCTAAATCTGCAGACATCCTGAGACTGTGCAAATACAGGGATATCCTCCTTA
GTGAGATTTTGATGAATGGTCTCACTGAGTCACAGTTCATTTCAATTTGGAAAAAGTTTCAGATATTCT
TCTGCGCCTTGGGATGATGCAAGAGGATATTGACAAAGTGAAGGAGAATCCCATTGAGAATATCTCCCTT
GATTACCATCAGCTATCTGTCTACCTAGGCATACCAGTACCAGAAATCATACAGAGGATGTTATCCTGCT
ATCAACAAGGAATTGCTCTACAGTCAATAACAGGCAGTCAGCGTATTGAAATAGAAGAGTTACAGAATGA
GGAAGAAGAACTAAGTCCACCTCTCATGGAGTACAATATAAATGTGAAATCACACCCTGAGATACAGTTT
GCAGAAATTAATAAAGATGGGACCTCAATACCCAGTGAATCTTCAACAGAATCTTTAAAGATCTCCAGG
AAGTTAAGAGTAAACAAAAGGAAAAAGAAGAACTAAGAATAAAAAAGAATAAAGACTCAAAAAGAAGACCA
AGTCCCATATGTGGTAGAAAAGGAAGAGCAGTTGAGGAAAAGAACAAGCAAATCCACACTCAGTCAGTAGA
CTTATAAAAGATGATGCAAGTGATGTTCAAGAGGATTCTGCAATGGAAGACAAGTTCTATAGCCTGGATG
AATTGCATATTCTGGACATGATAGAGCAGGGCTCAGCTGGCAAAGTAACTACAGACTATGGAGAACTGA
AAAGGAAAGGCTTGTCTGCTCAAAGGCAGCTTTATAAATTGCACTATCAGTGTGAAGATTTCAAAGACAG
TTGAGAACAGTGACTTTTCGGTGGCAAGAAAACCAAATGCAGATTAAGAAAGAAAGACAAAATTATCGCAT
CTCTTAATCAACAAGTTGCTTTTGGAAATCAATAAGGTTTCCAAATACAGCGTCAATCCATGCTAAAGA
TAATGAAATCAAGAACCTTAAAGAGCAACTTTCTATGAAAAGATCTCAGTGGGAAATGAAAAACATAAT
CTGGAAGCACAATGAAAACATACGTAAGCAAACCTGAACGCAGAACTAGCAGAGCTTTAACAGCCGAGG
TGATTTTCTTACAGTGTCTGAGGATTTTGGTTTCTTCTAGAGCAGACTGAAAAGGATGTCTCAA
TCAGCTTGCCAGGGTGACTCACATGGCAGCAAGCAACCTAGAATCACTTCAATTAAGGCTGCGGTAGAC
AGTTGGAATGCCATTGTGGCAGATGTTAGAAAACAAGATTGCATTCCTCAGGACACAGTACAATGAACAAA
TAAACAAAGTCAAGCAAGGATTTGCCTTGAGTACCTTGCCTCCAGTCCAGCTTCTCCTCCACCACCCAG
TCCTGAGATACTGATGCAGCAGTTCTTAGGAAGACCCCTTGTGAAAGAATCTTTCTTTAGACCCATACTT
ACTGTTCTCAAATGCCTGCAGTTTCCCAGGAGTCGTCTCTGCAACTGGCCAACCTAGAGCCCCCTGA
TGACTGGCATAGCCTGGGCTCTGCCAGCGCCTGTGGGAGACGCTGTGCCTCCCAGTGCAGGTCTGCGGAG
TGATCCCTCCATCATGAATTGGGAGAGAATTACAGACAGGCTGAAAACCTGCCTTTCCACAGCAAACCAGA
AAGGAACTTACAGATTTCTTACGAAAATTGAAGGATGCTTATGGAATACTTGTCTGAACTGACATTTG
ATGAAATGTTTGAAGATTTCCAGTTTATTGACCCAAAAAGTCTCAGAGTCAAGGAAAAATCAGTGTG
AAATGTTAATTGTGTTTACCTAGTCATTCTCCATCACAGCCTGATGCTGCCAGCCCCAAAAACCAGCC
TGGAGGCCACTCACTTACAGGGTCTGCCACATGGGAAGGAGCCAGTAATCCAGATGAGGAAGAGGAAG
AAGAAGAGCCTTGTGTGATCTGTCATGAGAATCTGTCTCCAGAAAATCTTTCAGTTTTGCCTTGCCTCA
CAAATTCATGCTCAGTGCATTAGACCATGTTGATGCAACAGGGGACATGTCCAACGTGCAGACTCCAC
GTTTTGCTACCAGAAGAATCCCTGGTCAACCCAGCCGGCAGTTGCCAAGATC

ACGCGTACGCGGCGCTCGAGCAGAACTCATCTCAGAAGAGGATCTGGCAGCAAATGATATCCTGGATT
ACAAGGATGACGACGATAAGGTTTAA

Protein Sequence: >RC209617 representing NM_014648
 Red=Cloning site Green=Tags(s)

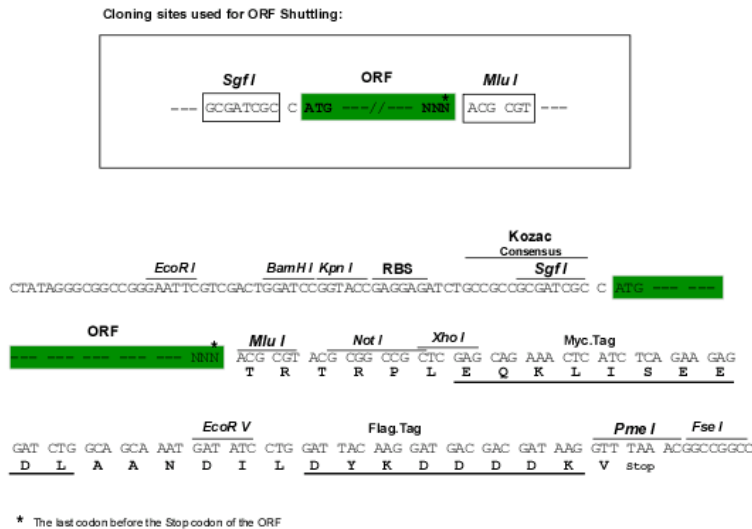
MDSL PDEFFVRHPAVEDQRKEETENKLEKSSGQLNKQENDIPTDLV P V N L L L E V K K L L N A I N T L P K G V V P
 H I K K F L Q E D F S F Q T M Q R E V A A N S Q N G E E I V P A L T L R F L I T Q L E A A L R N I Q A G N Y T A H Q I N I G Y Y L T L L F L
 Y G V A L T E R G K K E D Y T E A E N K F L V M K M M I Q E N E I C E N F M S L V Y F G R G L L R C A Q K R Y N G L L E F H K S L Q E I G
 D K N D H W F D I D P T E D E D L P T T F K D L L N N F I K T T E S N I M K Q T I C S Y L D C E R S C E A D I L K N T S Y K G F F L M C S
 K S C C V Y F H K I C W K K F K N L K Y P G E N D Q S F S G K K C L K E G C T G D M V R M L Q C D V P G I V K I L F E V V R K D E Y I T I E
 N L G A S Y R K L I S L K I T D T D I R P K I S L K F N T K D E M P I F K L D Y N Y F Y H L L H I I I S G T D I V R Q I F D E A M P P P L
 L K K E L L I H K N V L E S Y N H L W T N H P L G G S W H L L Y P P N K E L P Q S K Q F D L C L L L A L I K H L N V F P A P K K G W N M E
 P P S S D I S K S A D I L R L C K Y R D I L L S E I L M N G L T E S Q F N S I W K K V S D I L L R L G M M Q E D I D K V K E N P I E N I S L
 D Y H Q L S V Y L G I P V P E I I Q R M L S C Y Q Q G I A L Q S I T G S Q R I E I E E L Q N E E E E L S P P L M E Y N I N V K S H P E I Q F
 A E I N K D G T S I P S E S T E S L K D L Q E V K S Q R K K K K T K N K N K D S K E D Q V P Y V V E K E E Q L R K E Q A N P H S V S R
 L I K D D A S D V Q E D S A M E D K F Y S L D E L H I L D M I E Q G S A G K V T T D Y G E T E K E R L A R Q R Q L Y K L H Y Q C E D F K R Q
 L R T V T F R W Q E N Q M Q I K K K D K I I A S L N Q Q V A F G I N K V S K L Q R Q I H A K D N E I K N L K E Q L S M K R S Q W E M E K H N
 L E S T M K T Y V S K L N A E T S R A L T A E V Y F L Q C R R D F G L L H L E Q T E K E C L N Q L A R V T H M A A S N L E S L Q L K A A V D
 S W N A I V A D V R N K I A F L R T Q Y N E Q I N K V K Q G F A L S T L P P V Q L P P P P S P E I L M Q Q F L G R P L V K E S F F R P I L
 T V P Q M P A V C P G V S A T G Q P R A P L M T G I A W A L P A P V G D A V P P S A G L R S D P S I M N W E R I T D R L K T A F P Q Q T R
 K E L T D F L R K L K D A Y G K S L S E L T F D E I V C K I S Q F I D P K K S Q S Q G K S V S N V N C V S P S H S P S Q P D A A Q P P K P A
 W R P L T S Q G P A T W E G A S N P D E E E E E E P C V I C H E N L S P E N L S V L P C A H K F H A Q C I R P W L M Q Q G T C P T C R L H
 V L L P E E F P G H P S R Q L P K I

TRTRPLEQKLISEEDLAANDILDYKDDDDKV

Chromatograms: https://cdn.origene.com/chromatograms/mg2877_a03.zip

Restriction Sites: SgfI-MluI

Cloning Scheme:

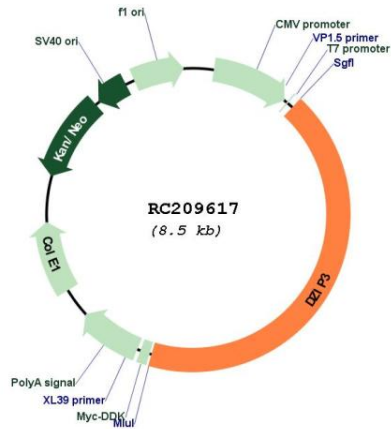


ACCN: NM_014648

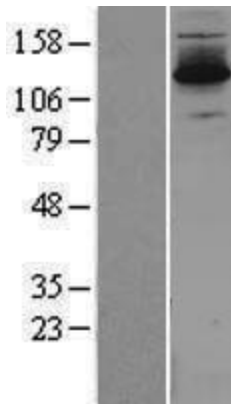
ORF Size: 3624 bp

OTI Disclaimer:	The molecular sequence of this clone aligns with the gene accession number as a point of reference only. However, individual transcript sequences of the same gene can differ through naturally occurring variations (e.g. polymorphisms), each with its own valid existence. This clone is substantially in agreement with the reference, but a complete review of all prevailing variants is recommended prior to use. More info
OTI Annotation:	This clone was engineered to express the complete ORF with an expression tag. Expression varies depending on the nature of the gene.
Components:	The ORF clone is ion-exchange column purified and shipped in a 2D barcoded Matrix tube containing 10ug of transfection-ready, dried plasmid DNA (reconstitute with 100 ul of water).
Reconstitution Method:	<ol style="list-style-type: none"> 1. Centrifuge at 5,000xg for 5min. 2. Carefully open the tube and add 100ul of sterile water to dissolve the DNA. 3. Close the tube and incubate for 10 minutes at room temperature. 4. Briefly vortex the tube and then do a quick spin (less than 5000xg) to concentrate the liquid at the bottom. 5. Store the suspended plasmid at -20°C. The DNA is stable for at least one year from date of shipping when stored at -20°C.
RefSeq:	NM_014648.3
RefSeq Size:	5319 bp
RefSeq ORF:	3627 bp
Locus ID:	9666
UniProt ID:	Q86Y13
Cytogenetics:	3q13.13
Domains:	RING
Protein Families:	Druggable Genome
MW:	138.4 kDa
Gene Summary:	E3 Ubiquitin ligase proteins mediate ubiquitination and subsequent proteasomal degradation of target proteins. E3 ubiquitin ligases accept ubiquitin from an E2 ubiquitin-conjugating enzyme in the form of a thioester and then directly transfers the ubiquitin to targeted substrates. Able to specifically bind RNA.[UniProtKB/Swiss-Prot Function]

Product images:



Circular map for RC209617



Western blot validation of overexpression lysate (Cat# [LY415137]) using anti-DDK antibody (Cat# [TA50011-100]). Left: Cell lysates from untransfected HEK293T cells; Right: Cell lysates from HEK293T cells transfected with RC209617 using transfection reagent MegaTran 2.0 (Cat# [TT210002]).