

Product datasheet for RC209615

REEP1 (NM_022912) Human Tagged ORF Clone

Product data:

Product Type: Expression Plasmids
Product Name: REEP1 (NM_022912) Human Tagged ORF Clone
Tag: Myc-DDK
Symbol: REEP1
Synonyms: C2orf23; HMN5B; SPG31; Yip2a
Mammalian Cell Selection: Neomycin
Vector: pCMV6-Entry (PS100001)
E. coli Selection: Kanamycin (25 ug/mL)
ORF Nucleotide Sequence: >RC209615 ORF sequence
 Red=Cloning site Blue=ORF Green=Tags(s)

TTTTGTAATACGACTCACTATAGGGCGGCCGGAATTCGTCGACTGGATCCGGTACCGAGGAGATCTGCC
GCC**CGATCGCC**

ATGGTGCATGGATCATCTCCAGGCTGGTGGTCTTATATTTGGCACCCTTTACCCTGCGTATTATTCCT
ACAAGGCTGTGAAATCAAAGGACATTAAGGAATATGTCAAATGGATGATGACTGGATTATTTGCACT
TTTCACCACAGCAGACATTACAGACATCTTCCTTTGTTGGTTTCCATTCTATTATGAACTAAAAATA
GCATTTGTAGCCTGGCTGCTGTCTCCCTACACAAAAGGCTCCAGCCTCCTGTACAGGAAGTTTGTACATC
CCACACTATCTTCAAAGAAAAGGAAATCGATGATTGTCTGGTCCAAGCAAAGACCGAAGTTACGATGC
CCTTGTGCACTTCGGGAAGCGGGGCTTGAACGTGGCCGCCACAGCGGCTGTGATGGCTGCTTCAAAGGGA
CAGGGTGCCTTATCGGAGAGACTGCGGAGCTTCAGCATGCAGGACCTCACCACCATCAGGGGAGACGGCG
CCCCTGCTCCCTCGGGCCCCCACCACCGGGTCTGGGCGGGCCAGCGGCAAACCGGCCAGCCTAAGAT
GTCCAGGAGTGCTTCTGAGAGCGCTAGCAGCTCAGGCACCGCC

ACGCGTACGCGGCCGCTCGAGCAGAACTCATCTCAGAAGAGGATCTGGCAGCAAATGATATCCTGGATT
ACAAGGATGACGACGATAAGGTTTAA

Protein Sequence: >RC209615 protein sequence
 Red=Cloning site Green=Tags(s)

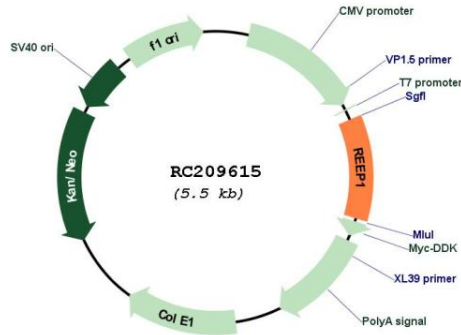
MVSWIISRLVVLIFGTLYPAYYSYKAVKSKDIKEYVKWMMYWIIFALFTTAETFTDIFLCWFPFYELKI
AFVAWLLSPYTKGSSLLYRKVFHPTLSSKEKEIDDCLVQAKDRSYDALVHFGKRGLNVAATAAVMAASKG
QGALSERLRSFSMQDLTTRGDGAPAPSGPPPPGSGRASGKHGQPKMSRSASESASSSGTA

TRTRPLEQKLISEEDLAANDILDYKDDDDKV

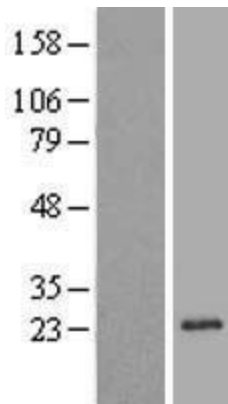


RefSeq ORF:	606 bp
Locus ID:	65055
UniProt ID:	Q9H902
Cytogenetics:	2p11.2
Domains:	TB2_DP1_HVA22
Protein Families:	Druggable Genome, Transmembrane
MW:	22.3 kDa
Gene Summary:	This gene encodes a mitochondrial protein that functions to enhance the cell surface expression of odorant receptors. Mutations in this gene cause spastic paraplegia autosomal dominant type 31, a neurodegenerative disorder. Alternative splicing results in multiple transcript variants. [provided by RefSeq, Sep 2009]

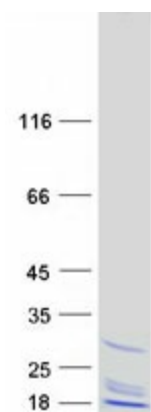
Product images:



Circular map for RC209615



Western blot validation of overexpression lysate (Cat# [LY411461]) using anti-DDK antibody (Cat# [TA50011-100]). Left: Cell lysates from untransfected HEK293T cells; Right: Cell lysates from HEK293T cells transfected with RC209615 using transfection reagent MegaTran 2.0 (Cat# [TT210002]).



Coomassie blue staining of purified REEP1 protein (Cat# [TP309615]). The protein was produced from HEK293T cells transfected with REEP1 cDNA clone (Cat# RC209615) using MegaTran 2.0 (Cat# [TT210002]).