

## Product datasheet for **RC209611**

### **FBXO24 (NM\_033506) Human Tagged ORF Clone**

#### **Product data:**

Product Type:	Expression Plasmids
Product Name:	FBXO24 (NM_033506) Human Tagged ORF Clone
Tag:	Myc-DDK
Symbol:	FBXO24
Synonyms:	FBX24
Mammalian Cell Selection:	Neomycin
Vector:	pCMV6-Entry (PS100001)
E. coli Selection:	Kanamycin (25 ug/mL)



[View online »](#)

**ORF Nucleotide Sequence:**

>RC209611 representing NM\_033506  
 Red=Cloning site Blue=ORF Green=Tags(s)

TTTTGTAATACGACTCACTATAGGGCGGCCGGGAATTCGTCGACTGGATCCGGTACCGAGGAGATCTGCC  
 GCC**CGGATCGCC**

ATGGGCGAGAAGGCGGTCCCTTTGCTAAGGAGGAGGCGGGTGAAGAGAAGCTGCCCTTCTGTGGCTCGG  
 AGCTTGGGGTTGAAGAGAAGAGGGGAAAGGAAATCCGATTTCCATCCAGTTGTTCCCCCAGAGCTGGT  
 GGAGCATATCATCTCATTCTCCAGTCAGAGACCTTGTGCCCCTCGGCCAGACCTGCCGCTACTTCCAC  
 GAAGTGTGCGATGGGGAAGGCGTGTGGAGAGCATCTGTCGAGACTCAGTCCGCGCCTCCAAGATCAGG  
 GTTCTGGAGTCCGGCCCTGGAAGAGAGCTGCCATTCTGAACTACACGAAGGGCCTGTATTTCCAGGCATT  
 TGGAGGCCCGCCGATGTCTCAGCAAGAGCGTGGCCCCCTTGTAGCCACGGCTACCGCCGCTTCTTG  
 CCCACCAAGGATCAGTCTTCTTCTGACTACGTGGGGACCCTTCTTCTCAAAAATGCCCTGGTCT  
 CCACCCTCGGCCAGATGCAGTGAAGCGGGCCTGTCGCTATGTTGTGTTGTGCTGAGGCAAGGATTT  
 TGCTCGGACCAAGGTGTGACACAGTTTACCGTAAATACCTCTACGTCTTGCCACTCGGAGCCGACG  
 GAAGTGGTGGGTACCACCAGCAGCCGGGCTGTGACTGTGTTGAGGTCTATCTGCAGTCTAGTGGGCAGC  
 GGGTCTTCAAGATGACATTCCACCACTCAATGACCTTCAAGCAGATCGTCTGGTGGTCAAGGACCCA  
 GCGGGCTACTGCTCCTCACAGAGGAAGGAAAGATCTACTCTTTGGTAGTGAATGAGACCCAGCTTGAC  
 CAGCCACGCTCCTACACGGTTCAGCTGGCCCTGAGGAAGGTGTCCCACTACCTGCCTCACCTGCGGTG  
 CCTGCATGACTTCCAACCAGAGCAGCACCTCTACGTCACAGACCAGGGGGAGTGTATTTGAGGTGCA  
 TACCCAGGGGTATCGCGATCTTTGGGACCCTTCAAGCCTTGACCCCTGGACCAGCAGATGCCG  
 CTTGCTCTCACTGCCTGCCAAGATCCTATTCTGTGCTTGGCTACAACCACCTTGGCCTGGTGGAT  
 AATTTGGCCGAATCTTTCATGCAAGGAAATAACAGATACGGGAGCTAGGAACAGGGGACAAAATGGACCG  
 AGGGGAACCCACACAGGTTTGTACCTGCAGCGGCCATCACCTGTGGTGGCCCTCAACCACTCCCTG  
 GTGCTGAGCCAGAGCTCAGAGTTCAGCAAGGAGCTGCTGGGCTGCGGCTGTGGGCTGGGGCCGCTCC  
 CAGGCTGGCCCAAGGGGAGTGCCTCCTTCTGCAAGCTCCAAGTCAAGTCCCTCTGTGTGCTGTGCCCT  
 CTGTGCCACCAGGGAGTGCCTATACATCTGTCCAGCCAGCATTGAGCAGCAGCCCCCTATCGCCAC  
 CTGCCAGCCAGCAGGGTGGTGGGACTCCTGAGCCAGCCTGGGGCCAGAGCACCCAGGACCCCGGG  
 GGATGGCCAGGCTGCGAGGAGTACCTCAGCCAGATCCACAGTTGCCAAACGTTGCAGGACCGCACGGA  
 GAAGATGAAGGAGATCGTAGGTGGATGCCCTGATGGCCGCACAGAAGGACTTCTCTGGGAGGCCCTG  
 GACATGCTGCAGAGGGCTGAAGGAGGCGGGGTGGTGTAGGGCCCCAGCCCTGAGACC

**ACGCGT**ACGCGGCCGCTCGAGCAGAAACTCATCTCAGAAGAGGATCTGGCAGCAAATGATATCCTGGATT  
 ACAAGGATGACGACGATAAGGTTTAA

**Protein Sequence:**

>RC209611 representing NM\_033506  
 Red=Cloning site Green=Tags(s)

MGEKAVPLRRRRVVRKSCPCSELGVEEKRKGKGNPISIQLFPPPELVEHIIISFLPVRDLVALGQTCRYFH  
 EVCDGEGVWRRICRRLSPRLQDQSGVVRPWKRAAILNYTKGLYFQAFGGRRRCLSKSVAPLLAHGYRRFL  
 PTKDHVFILDYVGTLLFLLKNALVSTLGMQWKRACRYVVLCRGAKDFASDPRCDTVYRKYLYVLATREPQ  
 EVVGTSSRACDCVEVYLQSSGQVFKMTFHHSMTFKQIVLVGQETQRALLLLEEGKIYSLVNETQLD  
 QPRSYTVQLALRKVSHYLPFLRVACMTSNQSSLYVTDQGGVYFEVHTPGVYRDLFGTLQAFDPLDQMP  
 LALSLPAKILFCALGYNHLGLVDEFGRIFMQNNRYQLGTGDKMDRGEPTQVCYLQRPITLWCGLNHSL  
 VLSQSSEFSKELLGCGCAGGRLPGWPKGSASFVKLVKVPKLCALCATRECLYILSSHDIHQHAPYRH  
 LPASRVVGTPEPSLGRAPQDPGMAQACEEYLSQIHSCQTLQDRTEKMKIEIVGWMPMAAQKDFWEAL  
 DMLQRAEGGGGGVPPAPET

**TR**TRPLEQKLISEEDLAANDILDYKDDDDKV

**Chromatograms:**

[https://cdn.origene.com/chromatograms/mg4900\\_g09.zip](https://cdn.origene.com/chromatograms/mg4900_g09.zip)

**Restriction Sites:**

Sgfl-Mlul

**Cloning Scheme:**


**ACCN:** NM\_033506

**ORF Size:** 1740 bp

**OTI Disclaimer:** The molecular sequence of this clone aligns with the gene accession number as a point of reference only. However, individual transcript sequences of the same gene can differ through naturally occurring variations (e.g. polymorphisms), each with its own valid existence. This clone is substantially in agreement with the reference, but a complete review of all prevailing variants is recommended prior to use. [More info](#)

**OTI Annotation:** This clone was engineered to express the complete ORF with an expression tag. Expression varies depending on the nature of the gene.

**Components:** The ORF clone is ion-exchange column purified and shipped in a 2D barcoded Matrix tube containing 10ug of transfection-ready, dried plasmid DNA (reconstitute with 100 ul of water).

- Reconstitution Method:**
1. Centrifuge at 5,000xg for 5min.
  2. Carefully open the tube and add 100ul of sterile water to dissolve the DNA.
  3. Close the tube and incubate for 10 minutes at room temperature.
  4. Briefly vortex the tube and then do a quick spin (less than 5000xg) to concentrate the liquid at the bottom.
  5. Store the suspended plasmid at -20°C. The DNA is stable for at least one year from date of shipping when stored at -20°C.

**RefSeq:** [NM\\_033506.3](#)

**RefSeq Size:** 2292 bp

**RefSeq ORF:** 1743 bp

**Locus ID:** 26261

**UniProt ID:** [O75426](#)

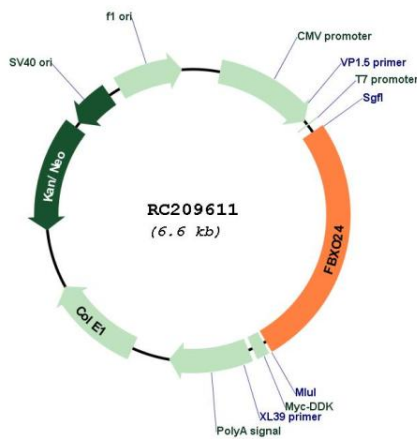
**Cytogenetics:** 7q22.1

**Protein Families:** Druggable Genome

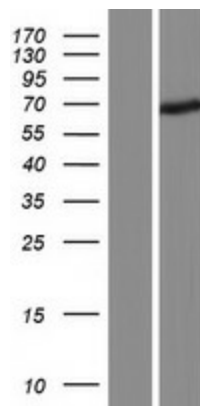
**MW:** 64.7 kDa

**Gene Summary:** This gene encodes a member of the F-box protein family which is characterized by an approximately 40 amino acid motif, the F-box. The F-box proteins constitute one of the four subunits of the ubiquitin protein ligase complex called SCFs (SKP1-cullin-F-box), which function in phosphorylation-dependent ubiquitination. The F-box proteins are divided into 3 classes: Fbws containing WD-40 domains, Fbls containing leucine-rich repeats, and Fbxs containing either different protein-protein interaction modules or no recognizable motifs. The protein encoded by this gene belongs to the Fbxs class. Multiple transcript variants encoding different isoforms have been found for this gene. [provided by RefSeq, Jul 2009]

**Product images:**



Circular map for RC209611



Western blot validation of overexpression lysate (Cat# [LY409538]) using anti-DDK antibody (Cat# [TA50011-100]). Left: Cell lysates from untransfected HEK293T cells; Right: Cell lysates from HEK293T cells transfected with RC209611 using transfection reagent MegaTran 2.0 (Cat# [TT210002]).