

Product datasheet for **RC209610**

MRGX3 (MRGPRX3) (NM_054031) Human Tagged ORF Clone

Product data:

Product Type:	Expression Plasmids
Product Name:	MRGX3 (MRGPRX3) (NM_054031) Human Tagged ORF Clone
Tag:	Myc-DDK
Symbol:	MRGX3
Synonyms:	GPCR; MRGX3; SNSR1; SNSR2
Mammalian Cell Selection:	Neomycin
Vector:	pCMV6-Entry (PS100001)
E. coli Selection:	Kanamycin (25 ug/mL)
ORF Nucleotide Sequence:	>RC209610 ORF sequence Red=Cloning site Blue=ORF Green=Tags(s)

TTTTGTAATACGACTCACTATAGGGCGGCCGGAATTCGTCGACTGGATCCGGTACCGAGGAGATCTGCC
GCC**CGATCGCC**

ATGGATCAACCATCCCAGTCTTGGGTACAGAAGTACACCAATCAACGGACGTGAGGAGACTCCTTGCT
ACAAGCAGACCCTGAGCTTACGGGGCTGACGTGCATCGTTTCCCTTGTGCGCTGACAGGAAACGCGGT
TGTGCTCTGGCTCCTGGGCTGCCGATGCGCAGGAACGCTGTCTCCATCTACATCCTCAACCTGGTCGCG
GCCGACTTCTCTTCTTAGCGCCACATTATACGTTCCGGTTACGCCTCATCAATATCCGCCATCCCA
TCTCCAAAATCCTCAGTCTGTGATGACCTTCCCTACTTTATAGCCTAAGCATGCTGAGCGCCATCAG
CACCGAGCGCTGCCTGTCCATCCTGTGGCCATCTGGTACCAGTCCCGCCGCCAGATACCTGTATCG
GTCATGTGTGCTGCTCTGGGCCCTGTCCCTGCTGCGGAGTATCCTGGAGTGGATGTTCTGTGACTTCC
TGTTTAGTGGTGTGATTCTGTTTGGTGTGAAACGTGAGATTTTATTACAATCGCGTGGCTGGTTTTTTT
ATGTGTGGTTCTGTGGGTCCAGCCTGGTCTGCTGGTCCAGGATTTCTGTGGATCCCGGAAGATGCCG
CTGACCAGGCTGTACGTGACCATCCTCACAGTGTGGTCTTCCCTCTGTGGCCTGCCCTTTGGCA
TTCAGTGGGCCCTGTTTCCAGGATCCACTGGATTGAAAGTCTATTTTGTGATGTGCATCTAGTTTC
CATTTTCTGTCCGCTCTTAACAGCAGTGCCAACCCATCATTTACTTCTTGTGGGCTCCTTTAGGCAG
CGTCAAAATAGGCAGAACCTGAAGCTGGTCTCCAGAGGGCTCTGAGGACACGCCTGAGGTGGATGAAG
GTGGAGGCGAGCTTCTCAGGAAACCTGGAGCTGTCCGGAAGCAGATTGGAGCAG

ACGCGTACGCGGCCGCTCGAGCAGAAACTCATCTCAGAAGAGGATCTGGCAGCAAATGATATCCTGGATT
ACAAGGATGACGACGATAAGGTTTAA



[View online »](#)

Protein Sequence: >RC209610 protein sequence
Red=Cloning site Green=Tags(s)

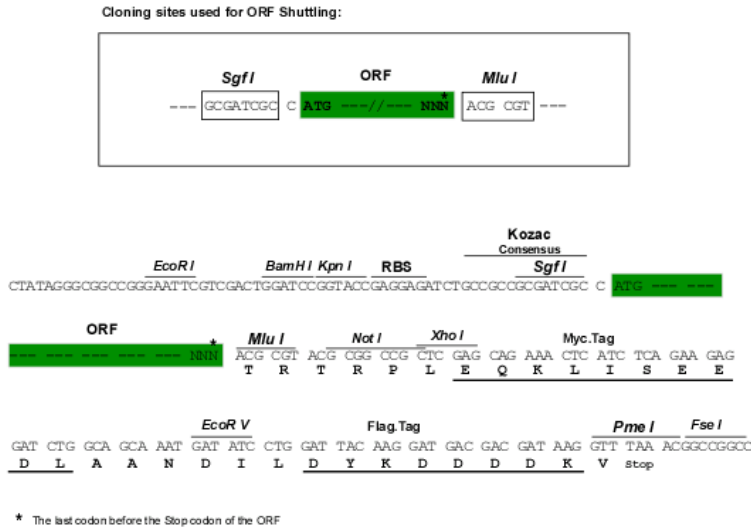
MDSTIPVLGTELTPIINGREETPCYKQTLSTFTGLTCIVSLVALTGNAVVLWLLGCRMRRNAVSIYILNLVA
 ADFLFLSGHIIRSPLRLINIRHPISKILSPVMTFPYFIGLSMLSAISTERCLSILWPIWYHCRPRYLSS
 VMCVLLWALSLLRSILEWMFCDFLFSGADSVWCETSDFITIAWLVFLCVLVCSSLLVLRILCGSRKMP
 LTRLVYVITLLTVLVFLLCGLPFGIQWALFSRIHLDWKVLFCHVHLVSIFLSALNSSANPIIYFFVGSFRQ
 RQNRQNLKLVLQRALQDTPEVDEGGQLPQETLELSGSRLEQ

TRTRPLEQKLISEEDLAANDILDYKDDDDKV

Chromatograms: https://cdn.origene.com/chromatograms/mk6005_f08.zip

Restriction Sites: SgfI-MluI

Cloning Scheme:



ACCN: NM_054031

ORF Size: 966 bp

OTI Disclaimer: The molecular sequence of this clone aligns with the gene accession number as a point of reference only. However, individual transcript sequences of the same gene can differ through naturally occurring variations (e.g. polymorphisms), each with its own valid existence. This clone is substantially in agreement with the reference, but a complete review of all prevailing variants is recommended prior to use. [More info](#)

OTI Annotation: This clone was engineered to express the complete ORF with an expression tag. Expression varies depending on the nature of the gene.

Components: The ORF clone is ion-exchange column purified and shipped in a 2D barcoded Matrix tube containing 10ug of transfection-ready, dried plasmid DNA (reconstitute with 100 ul of water).

Reconstitution Method:

1. Centrifuge at 5,000xg for 5min.
2. Carefully open the tube and add 100ul of sterile water to dissolve the DNA.
3. Close the tube and incubate for 10 minutes at room temperature.
4. Briefly vortex the tube and then do a quick spin (less than 5000xg) to concentrate the liquid at the bottom.
5. Store the suspended plasmid at -20°C. The DNA is stable for at least one year from date of shipping when stored at -20°C.

RefSeq: [NM_054031.2](#), [NP_473372.2](#)

RefSeq Size: 1660 bp

RefSeq ORF: 969 bp

Locus ID: 117195

UniProt ID: [Q96LB0](#)

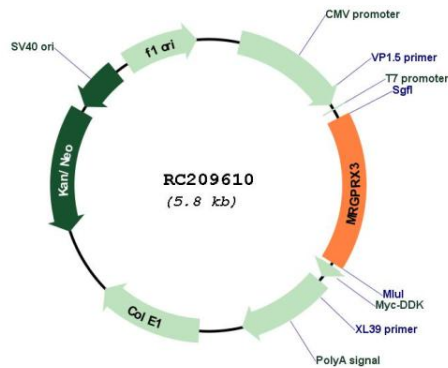
Cytogenetics: 11p15.1

Protein Families: Druggable Genome, GPCR, Transmembrane

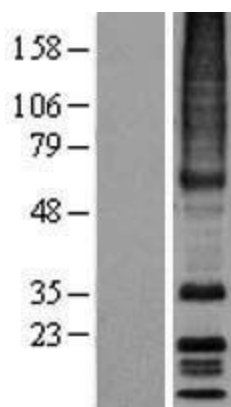
MW: 36.5 kDa

Gene Summary: This gene encodes a member of the mas-related/sensory neuron specific subfamily of G protein coupled receptors. The encoded protein may be involved in sensory neuron regulation and in the modulation of pain. [provided by RefSeq, Oct 2009]

Product images:



Circular map for RC209610



Western blot validation of overexpression lysate (Cat# [LY403294]) using anti-DDK antibody (Cat# [TA50011-100]). Left: Cell lysates from untransfected HEK293T cells; Right: Cell lysates from HEK293T cells transfected with RC209610 using transfection reagent MegaTran 2.0 (Cat# [TT210002]).