

Product datasheet for **RC209607**

ALS2CR15 (ICA1L) (NM_138468) Human Tagged ORF Clone

Product data:

Product Type:	Expression Plasmids
Product Name:	ALS2CR15 (ICA1L) (NM_138468) Human Tagged ORF Clone
Tag:	Myc-DDK
Symbol:	ALS2CR15
Synonyms:	ALS2CR14; ALS2CR15
Mammalian Cell Selection:	Neomycin
Vector:	pCMV6-Entry (PS100001)
E. coli Selection:	Kanamycin (25 ug/mL)



[View online »](#)

ORF Nucleotide Sequence:

>RC209607 ORF sequence
 Red=Cloning site Blue=ORF Green=Tags(s)

TTTTGTAATACGACTCACTATAGGGCGGCCGGAATTCGTCGACTGGATCCGGTACCGAGGAGATCTGCC
 GCC**GCGATCGCC**

ATGGATTCCTTTGGCAACCCAGACCAGAAGATAATCAGTCAGTAGTCAGAAGAATGCAAAAGAATACT
 GGAAACTAAACAGGCTTTTATCAAAGCAACAGGAAAAAAGAGGATGAGCACTTGGTGGCGTCTGATGC
 TGAAGTGGATGCTAAACTTGAGGTTTTTCACTCTGTTCAAGAGACATGCACTGAACCTTCTGAAGATAATC
 GAGAAATACCAGCTAAGACTCAATGTTATATCAGAGGAAGAAAATGAGCTAGGGCTCTTTTTAAATTTTC
 AAGCAGAACGGGATGCAACTCAAGCTGGCAAAATGATGGATGCCACTGGCAAGGCACTTTGTTCTTCAGC
 CAAGCAAAGATTGGCCCTGTGTACTCCTCTGTCTCGTCTGAAGCAAGAAGTAGCAACATTCAGTCAAAGG
 GCAGTATCTGATACCTTGATGACAATTAATCGGATGGAGCAGGCACGCACAGAATACAGAGGAGCTCTAC
 TGTGGATGAAAGATGTATCCCAAGAGCTGGACCCAGACACCTTAAAGCAAATGGAAAAGTTAGAAAAGT
 ACAGATGCAAGTGAGAAATAGCAAAGCTTCTTTTGACAAGTTAAAGATGGATGTTTGTGAGAAAGTGGAT
 TTAAGTGGAGCTAGTCGCTGCAATATGCTATCTCATTGCTCACTACCTACCAGAGAACACTGCTTGGAT
 TCTGGAAGAAAACAGCTCGAATGATGTCCCAAATTCATGAAGCCTGTATTGGCTTTCATCCGTATGATT
 TGTAGCTCTCAAGCAACTACAAGACACGCCAAGCAAGATTAGTGAAGACAATAAAGATGAACAAATAGGC
 GGTTTTCTTACTGAACAGCTCAATAAGCTAGTTTTGTCTGATGAGGAAGCAAGCTTTGAGAGTGAACAAG
 CAAACAAAGATCACAATGAAAAACATTCCTCAATGAGAGAATTTGGAGCACCTCAGTTTTCTAACTCTGA
 AAATGTTGAAAAGATCTACCTGTAGATTCAATGGAAGGAGAAGATTTGAGAAGGAATTCATTTCTG
 AACAACTCCTAAGTTCTGGTTCTTCAAGTACTAGTGAATTTACCAAGAATGCCAGACTGCCTTTGGGA
 GCCCCAGTGCCAGTCTCACATCCAGGAGCCTTCCATGGGGTCTGAGCCCTCGCTCATTCTTCTGAGT
 CTTCTTCCACAACCTTTGACCTTGGCTTTCATGTGGCTGGAGCGTTCAACAACCTGGGTCTCCCAAGAG
 GAATCAGAACTTTGTCTTTCACACACTGATAACCAGCCAGTGCCTTACAGAGTCCAAAGAAATTAACAA
 GATCCCCAACAAATGGCAACCAAGACATGTCAGCCTGGTTCAATCTGTTTGCAGACTTGGATCCACTTTC
 AAACCCAGATGCTATTGGACTCAGATGATGAACTTCTTAATGCT

ACGCGTACGCGGCCGCTCGAGCAGAAACTCATCTCAGAAGAGGATCTGGCAGCAATGATATCCTGGATT
 ACAAGGATGACGACGATAAGGTTTAA

Protein Sequence:

>RC209607 protein sequence
 Red=Cloning site Green=Tags(s)

MDSFGQRPEDNQSVVRRMQKKYWKTKQVFIKATGKKEDEHLVASDAELDAKLEVFHSVQETCTELLKII
 EKYQLRLNVISEEENELGLFLKFQAERDATQAGKMMDATGKALCSSAKQRLALCTPLSRLKQEVATFSQR
 AVSDTLMTINRMEQARTEYRGALLWMKDVSQLDPDTLKQMEKFRKVMQVRNSKASFDKLMKMDVCQKVD
 LLGASRCNMLSHSLTTYQRTLLGFWKKTARMMSQIHEACIGFHPYDFVALKQLQDTPSKI SEDNKDEQIG
 GFLTEQLNKLVLSDDEASFSEQANKDHNEKHSQMREFGAPQFSNSENVAKDLPVDSLEGEDFEKEFSFL
 NNLLSSGSSSTSEFTQECQTAFGSPSASLTSQEPSMGSEPLAHSSRFLPSQLFDLGFHVAGAFNNWVSQE
 ESELCLSHDNQPVPSQSPKLLTRSPNNGNQDMSAWFNLFADLDPLSNPDAIGHSDDELLNA

TRTRPLEQK**L**I SEEDLAANDILDYKDDDDKV

Chromatograms:

https://cdn.origene.com/chromatograms/mk6586_a05.zip

Restriction Sites:

Sgfl-MluI

Cloning Scheme:

Cloning sites used for ORF Shutting:



* The last codon before the Stop codon of the ORF

ACCN: NM_138468

ORF Size: 1446 bp

OTI Disclaimer: The molecular sequence of this clone aligns with the gene accession number as a point of reference only. However, individual transcript sequences of the same gene can differ through naturally occurring variations (e.g. polymorphisms), each with its own valid existence. This clone is substantially in agreement with the reference, but a complete review of all prevailing variants is recommended prior to use. [More info](#)

OTI Annotation: This clone was engineered to express the complete ORF with an expression tag. Expression varies depending on the nature of the gene.

Components: The ORF clone is ion-exchange column purified and shipped in a 2D barcoded Matrix tube containing 10ug of transfection-ready, dried plasmid DNA (reconstitute with 100 ul of water).

Reconstitution Method:

1. Centrifuge at 5,000xg for 5min.
2. Carefully open the tube and add 100ul of sterile water to dissolve the DNA.
3. Close the tube and incubate for 10 minutes at room temperature.
4. Briefly vortex the tube and then do a quick spin (less than 5000xg) to concentrate the liquid at the bottom.
5. Store the suspended plasmid at -20°C. The DNA is stable for at least one year from date of shipping when stored at -20°C.

RefSeq: [NM_138468.6](#)
RefSeq Size: 8333 bp

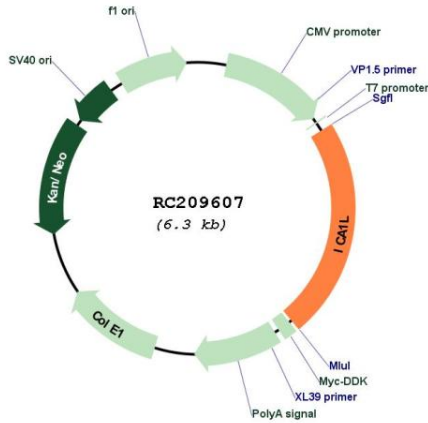
RefSeq ORF: 1449 bp

Locus ID: 130026

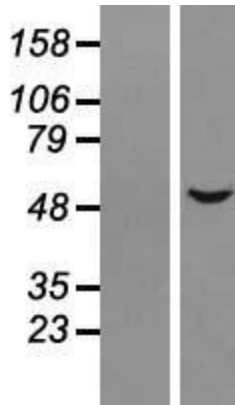
UniProt ID: [Q8NDH6](#)
Cytogenetics: 2q33.2

Domains: ICA69
 MW: 54.4 kDa

Product images:



Circular map for RC209607



Western blot validation of overexpression lysate (Cat# [LY408594]) using anti-DDK antibody (Cat# [TA50011-100]). Left: Cell lysates from untransfected HEK293T cells; Right: Cell lysates from HEK293T cells transfected with RC209607 using transfection reagent MegaTran 2.0 (Cat# [TT210002]).