

Product datasheet for RC209606

C1orf177 (LEXM) (NM_152607) Human Tagged ORF Clone

Product data:

Product Type:	Expression Plasmids
Product Name:	C1orf177 (LEXM) (NM_152607) Human Tagged ORF Clone
Tag:	Myc-DDK
Symbol:	C1orf177
Synonyms:	C1orf177; LEM
Mammalian Cell Selection:	Neomycin
Vector:	pCMV6-Entry (PS100001)
E. coli Selection:	Kanamycin (25 ug/mL)
ORF Nucleotide Sequence:	>RC209606 ORF sequence Red=Cloning site Blue=ORF Green=Tags(s)

TTTTGTAATACGACTCACTATAGGGCGGCCGGAATTCGTCGACTGGATCCGGTACCGAGGAGATCTGCC
GCC**CGATCGCC**

ATGAGGAAAGCCAGGATGCCGCCGAGCTCATGGCTGGAACCGCGTCGGCTCCACGGCCACCAAGTGGT
TCACCGGGGCGCCCTTCGGGGTGCAGAGCCACAGGTTTGACATCTCTGCTGTTTATCCAACTGGAAGAA
GTTCAGCACCTTCACTGAGGCCCATATCCACGCTTATTCTACCCAAGTGTCCACATAGGCCCTGGG
ACTTACAGCTCCAAGAGACCTGCTTCAGCAAGAAGAAGCTGATGAAGGAGGTGGACACAGGCTGGCCA
AGGCCAGGAAGCCACGCGGCTGACCCAGCTACCCCACTCCAGTACCAGGCCATCATGAAAGAGAAGCG
GCTGAAGGAGCAAAGCTGGGCCCTGCTCCTACAACCTCAAAGACTTCTTAGAACAGCTGCGGGAGAAA
CCATGTAGCACCCGGGGCTGCTCAGCTCTGGGAGGTTTCGCTCCGAGGACTCACTGGGAACACTATC
CAGGCCCTGGAATTATGGGGAGAAGGGTAACCCATACACCAAGCTGGAGGAGAAATGCTGGAACCGGTC
TCATTCGAGGGCCTCATGTGCAGGATGAGCAACAAGCCACACCCCGGCTCATCAGGGGAGTGGTCTG
GGACCCGGCACCTACTTCTTCAAAGCGACCTTGAGACATATGTGGCAGCATCCGTCGGCACCCGCGGCC
CCTATGACACTTCTCTGGTGATCGGAGCAAGCCACTGCCTTATGGGCACTACTCCATGCAGAAAAAAA
GCCAGGGAAGCTGATGAATTTCAAGAGCTTTGTAGAAGAACTTAACACATCACAATAAGAAGCATGGG
GTTTTTTCTAACTTCCCGAAACCCGAAACCCCTACAGAGAGGATTTACTGGGCAACCTCAGCCAGT
GCCCCCGCACACTGGCCACATCTGGCCCAAGTTTCTGGCTTCCACAAGAGAAGAAATGCAAACCCGTCAA
CCAGCCCCATTCTGTTGACCTCCAAGGGTCAAGGTGCAAAGGCTGCCAGATGATTATGGGAAGCTGG
AACCCAGTAGGTGTTGGCCGCTACCTCAACACCTGGCTGATGGAGACAAAGGACAGGCGGCAGCATATC
GATCCCTATTCTGAGTGGATCCAAACGCTACCTCTCAGACCTGGCCCGGACATGCTCATGCAAATCAG
GCTGTTTTGTTGAAAGGCTAGAAGTCATCAATTTGGCCTCTACCAATG

AG**CGGACCG**ACGCGTACGCGGCCGCTCGAGCAGAACTCATCTCAGAAGAGGATCTGGCAGCAAATGATATCC
TGGATTACAAGGATGACGACGATAAGGTTTAA



[View online >](#)

Protein Sequence: >RC209606 protein sequence
Red=Cloning site Green=Tags(s)

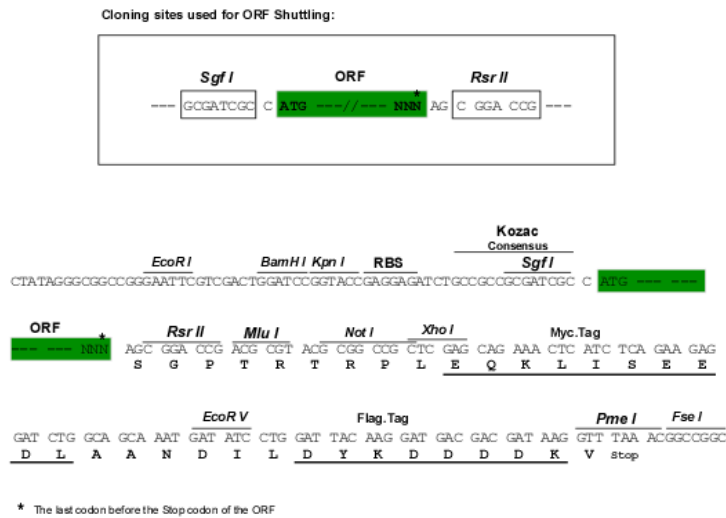
MRESQDAAGAHGWNRVGSTATKWFTGAPFGVQSHRFDISAVYPNWKKFSTFTEAPYSTRYSTQVSHIGPG
 TYSSKETCFSSKKLMKEVDTGWAKAQEATRLTQLPHFQYQAIMKEKRLKEQKLGPCSYNLKDFLEQLREK
 PCSTRGLLSSGEVRFRLGTGNYYPGPGNYGEKGNPYTKLEENAWNRSHEGLMCRMSNKPHPHQGSGL
 GPGTYFFKSDLETYVARSVGTRGPYDTFSGDRSKPLPYGHYSMQKKKPRELMNFKSFVEELNSHHNKKHG
 VFSKLPKRPKPTPTERIYWANLSQCPRTLATSGPSFWLPQEKCKCPVNQPPFLLTSKGSAGAKACQMIMGSW
 NPVGVGRYLNTWLMETKDRRQRYRSLFLSGSKRYLSDLARDMLMQIRLFCWKGLEVINFGLSPM

SGPTRTRPLEQKLI SEEDLAANDILDYKDDDDKV

Chromatograms: https://cdn.origene.com/chromatograms/mk6620_d06.zip

Restriction Sites: SgfI-RsrII

Cloning Scheme:



ACCN: NM_152607

ORF Size: 1242 bp

OTI Disclaimer: The molecular sequence of this clone aligns with the gene accession number as a point of reference only. However, individual transcript sequences of the same gene can differ through naturally occurring variations (e.g. polymorphisms), each with its own valid existence. This clone is substantially in agreement with the reference, but a complete review of all prevailing variants is recommended prior to use. [More info](#)

OTI Annotation: This clone was engineered to express the complete ORF with an expression tag. Expression varies depending on the nature of the gene.

Components: The ORF clone is ion-exchange column purified and shipped in a 2D barcoded Matrix tube containing 10ug of transfection-ready, dried plasmid DNA (reconstitute with 100 ul of water).

Reconstitution Method:

1. Centrifuge at 5,000xg for 5min.
2. Carefully open the tube and add 100ul of sterile water to dissolve the DNA.
3. Close the tube and incubate for 10 minutes at room temperature.
4. Briefly vortex the tube and then do a quick spin (less than 5000xg) to concentrate the liquid at the bottom.
5. Store the suspended plasmid at -20°C. The DNA is stable for at least one year from date of shipping when stored at -20°C.

RefSeq: [NM_152607.1](#), [NP_689820.1](#)

RefSeq Size: 1806 bp

RefSeq ORF: 1245 bp

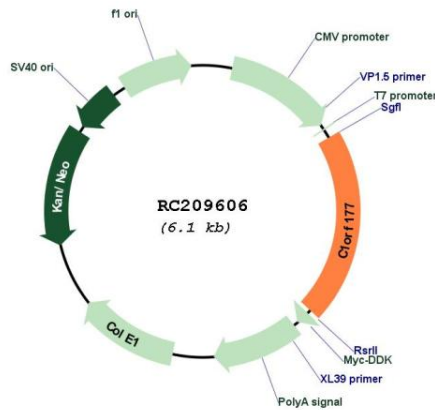
Locus ID: 163747

UniProt ID: [Q3ZCV2](#)

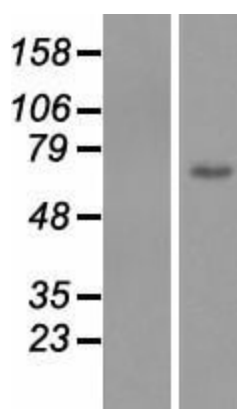
Cytogenetics: 1p32.3

MW: 47.3 kDa

Product images:



Circular map for RC209606



Western blot validation of overexpression lysate (Cat# [LY407412]) using anti-DDK antibody (Cat# [TA50011-100]). Left: Cell lysates from untransfected HEK293T cells; Right: Cell lysates from HEK293T cells transfected with RC209606 using transfection reagent MegaTran 2.0 (Cat# [TT210002]).