

Product datasheet for **RC209604**

C14orf50 (PPP1R36) (NM_172365) Human Tagged ORF Clone

Product data:

Product Type:	Expression Plasmids
Product Name:	C14orf50 (PPP1R36) (NM_172365) Human Tagged ORF Clone
Tag:	Myc-DDK
Symbol:	C14orf50
Synonyms:	C14orf50
Mammalian Cell Selection:	Neomycin
Vector:	pCMV6-Entry (PS100001)
E. coli Selection:	Kanamycin (25 ug/mL)



[View online »](#)

ORF Nucleotide Sequence:

>RC209604 ORF sequence
 Red=Cloning site Blue=ORF Green=Tags(s)

TTTTGTAATACGACTCACTATAGGGCGGCCGGAATTCGTCGACTGGATCCGGTACCGAGGAGATCTGCC
 GCC**CGCATCGCC**

ATGTACCGGGTGCCCGAGTTTTATGCGAGGAGGAAGCGTTAGGTGGCAGACCCCTTACTTGATGGATC
 AGTTGGATTACGATTAGGGATGTGGTACTGGAAAGATGAAACCAGAACTCTGAATTCAGAAGGTTTGC
 CGCAGAAGATTCTGTCCAGTGGCTCCTGAAACATCACCCCTCATTTTACACCTGCAGCAGAAGTCAAGGAA
 AAAGGAAAGAAAGGCAAAGCAGTTCACCTTGCAGAAATTGATGGTCCAGCTTCAGACAGGTTGACAGATA
 AAAGACTTGCTGCAAAAGATGATAAGTCAGCTAAAGCTGTAGAGAAACGAGGTCAACAGGGCACCATTAC
 ACTGGATGATGTTAAATTTGTTACTTTGCTTTTGTCTACAAGATACTGAGATGCAGCGGATCTGTTCTTTT
 ACAACATTTATGAGGAATAAGAATCTTGATAATTTCTCATGGCATTATTGTAATACTTATCCCATTACT
 TGGAAAAAACTCACTGGAAAAGAAACCCAAAAGCTATATGGTAGGCCTGTAGAGAAAAAGAAATGGA
 ATTTGGTTTTAAGTGAATTAGAAGCAGCACAGAGTACTTGGCGCAGAAGTACTGTATCCTTGTGCTGGGC
 TTGGCCGTGCCGATAAGCATCACATGTGCTGTGGAAAGGAGAAAATATCAGATACACAGAAAGACTGGA
 AGTTCTTTGAGTCTTTTATACTTTCTGTACATATGTGGCTTGGATTGTCTTCCGACGTCAACACTTGAC
 AGAGATTGAAGAAGAAGTAGGGAGACTCTTTCGTACCAATATGTTCAACATTCCTCGCAGGAGGCGTGAA
 GATGAGGAATCAGGAGGGGAAAAGAAACGCATGACTTTTGTTCAGTTCAGGAGAAATGATGGCAAAACGCC
 CAGCAATTAAGGCTATCAACATGCGTTCTCCAGTCATGTCTACTCTGCTGCCATCTCTCAGAGAAAA
 AGCTCAAAACGCTTTTGAGAAAAAGTATCATCAAGTAGACGTGAGATTCCAGCCGAGATGCAAAAGCAT
 GTGGGAAGCTGGACTCTGTGCCATGCCGGTAGTTGGCATCTTGGGGAGCCTCGATGTCTATTCAACC
 CACATACGCTTACCCCTTGTCCAGAAGAAAACACAAAATCATTGGGAGATATCCTTCTTGTGGA
 AAACAATAACATGAGGATTCAGGATACACTGGACTTGGTCATGAAAACACTGTCCTCTCATACATCATGC
 CCTAAG

ACGCGTACGCGGCCGCTCGAGCAGAACTCATCTCAGAAGAGGATCTGGCAGCAATGATATCCTGGATT
 ACAAGGATGACGACGATAAGGTTTAA

Protein Sequence:

>RC209604 protein sequence
 Red=Cloning site Green=Tags(s)

MYRVPEFYARRKRLGGQTPYLMQQLGLRLGMWYWKDETRTLEFRFRAEDSVQWLLKHHPHFTPAEEVKE
 KGKKGKAVHFAEIDGPASDRLTDKRLAAKDDKSAKAVEKRGQGTITLDDVKFVTLTLLQDTEMQRICSF
 TTFMRNKNLDFNLMALLYLSHYLEKNSLEKKPKSYMVGLVEKKEMELVLELEAAQRYLAQKYCILVLG
 LAVPDKHHMCCGKEKISDTQKDWKFFESFYTFCTYVAWIVFRRQHLTEIEEEVGRLFRTNMFNIPRRRRE
 DEESGGEKKRMTFVQFRMMAKRPAIKKAINMRSPVMSTLLPSLREKAQNVFEKKYHQVDVRFPAEMQKH
 VGTLDVSPMPVVGILGEPRLFNPHLHPLDPEENTKSFGRYPSLMENNNMRIQDTLDLVMKTLSSHTSC
 PK

TRTRPLEQKLISEEDLAANDILDYKDDDDKV

Chromatograms:

https://cdn.origene.com/chromatograms/mk6586_c05.zip

Restriction Sites:

Sgfl-Mlul

Cloning Scheme:


ACCN: NM_172365

ORF Size: 1266 bp

OTI Disclaimer: The molecular sequence of this clone aligns with the gene accession number as a point of reference only. However, individual transcript sequences of the same gene can differ through naturally occurring variations (e.g. polymorphisms), each with its own valid existence. This clone is substantially in agreement with the reference, but a complete review of all prevailing variants is recommended prior to use. [More info](#)

OTI Annotation: This clone was engineered to express the complete ORF with an expression tag. Expression varies depending on the nature of the gene.

Components: The ORF clone is ion-exchange column purified and shipped in a 2D barcoded Matrix tube containing 10ug of transfection-ready, dried plasmid DNA (reconstitute with 100 ul of water).

Reconstitution Method:

1. Centrifuge at 5,000xg for 5min.
2. Carefully open the tube and add 100ul of sterile water to dissolve the DNA.
3. Close the tube and incubate for 10 minutes at room temperature.
4. Briefly vortex the tube and then do a quick spin (less than 5000xg) to concentrate the liquid at the bottom.
5. Store the suspended plasmid at -20°C. The DNA is stable for at least one year from date of shipping when stored at -20°C.

RefSeq: [NM_172365.3](#)

RefSeq Size: 1405 bp

RefSeq ORF: 1269 bp

Locus ID: 145376

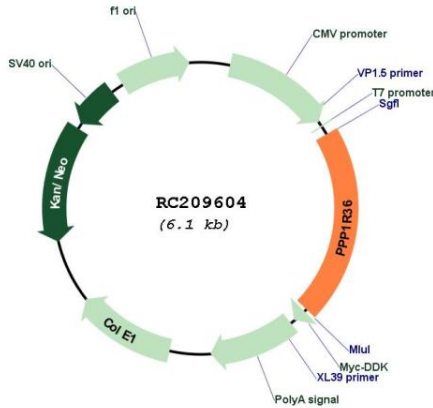
UniProt ID: [Q96LQ0](#)

Cytogenetics: 14q23.3

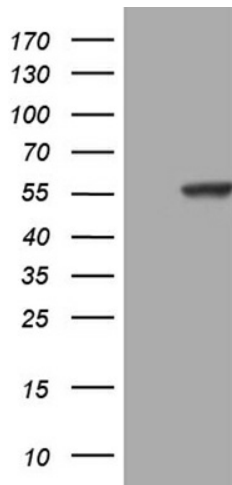
MW: 49.5 kDa

Gene Summary: Inhibits phosphatase activity of protein phosphatase 1 (PP1) complexes.[UniProtKB/Swiss-Prot Function]

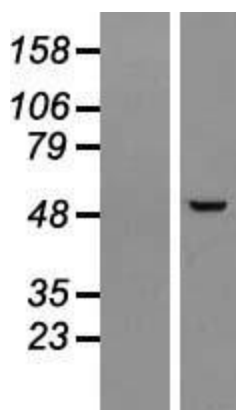
Product images:



Circular map for RC209604



HEK293T cells were transfected with the pCMV6-ENTRY control (Cat# [PS100001], Left lane) or pCMV6-ENTRY PPP1R36 (Cat# RC209604, Right lane) cDNA for 48 hrs and lysed. Equivalent amounts of cell lysates (5 ug per lane) were separated by SDS-PAGE and immunoblotted with anti-PPP1R36 (Cat# [TA809464])(1:2000). Positive lysates [LY406731] (100ug) and [LC406731] (20ug) can be purchased separately from OriGene.



Western blot validation of overexpression lysate (Cat# [LY406731]) using anti-DDK antibody (Cat# [TA50011-100]). Left: Cell lysates from untransfected HEK293T cells; Right: Cell lysates from HEK293T cells transfected with RC209604 using transfection reagent MegaTran 2.0 (Cat# [TT210002]).