

## Product datasheet for RC209603

### MAGEB6 (NM\_173523) Human Tagged ORF Clone

#### Product data:

Product Type:	Expression Plasmids
Product Name:	MAGEB6 (NM_173523) Human Tagged ORF Clone
Tag:	Myc-DDK
Symbol:	MAGEB6
Synonyms:	CT3.4; MAGE-B6; MAGEB6A
Mammalian Cell Selection:	Neomycin
Vector:	pCMV6-Entry (PS100001)
E. coli Selection:	Kanamycin (25 ug/mL)
ORF Nucleotide Sequence:	>RC209603 ORF sequence Red=Cloning site Blue=ORF Green=Tags(s)

TTTTGTAATACGACTCACTATAGGGCGCCGGGAATTCGTCGACTGGATCCGGTACCGAGGAGATCTGCC  
GCC**CGATCGC**C

ATGCCTCGGGTCACAAGAGTAAGCTCCGTACCTGTGAGAAACGCCAAGAGACCAATGGTCAGCCACAGG  
GTCTCACGGTCCCAGGCCACTGCAGAGAAGCAGGAAGAGTCCCCTCTCCTCATCCTCTTCTCGCGC  
TTGTCTGGGTGATTGTCGTAGGTCTTCTGATGCCTCCATTCTCAGGAGTCTCAGGGAGTGCACCCACT  
GGGTCTCCTGATGCAGTTGTTTCATATTCAAAATCCGATGTGGCTGCCAACGGCCAAGATGAGAAAAGTC  
CAAGCACCTCCCCTGATGCCTCCGTTCCCTCAGGAGTCTCAGGGAGCTTCACCCACTGGCTCTCCTGATGC  
AGGTGTTTCAGGCTCAAATATGATGTGGCTGCCAACGGCCAAGATGAGAAAAGTCCAAGCACTCCCAT  
GATGTCTCCGTTCCCTCAGGAGTCTCAGGGAGCTTCACCCACTGGCTCGCCTGATGCAGGTGTTTCAGGCT  
CAAATATGATGTGGCTGCCGAGGGTGAAGATGAGGAAAGTGAAGCGCCTCACAGAAAGCCATCATTTT  
TAAGCGCTTAAGCAAAGATGCTGTAAAGAAGAAGGCGTGCACGTTGGCGCAATCCTGCAGAAGAAGTTT  
GAGAAGAAAGAGTCCATTTTGAAGGCAGACATGCTGAAGTGTGTCGCAGAGAGTACAAGCCCTACTTCC  
CTCAGATCCTCAACAGAACCTCCCAACATTTGGTGGTGGCCTTTGGCGTTGAATTGAAAGAAATGGATTC  
CAGCGCGGAGTCTACACCCTTGTGAGCAAGCTAGGCCTCCCAAGTGAAGGAATCTGAGTGGTGATAAT  
GCGCTGCCGAAGTCGGGTCTCCTGATGTCGCTCCTGGTTGTGATCTTCATGAACGGCAACTGTGCCACTG  
AAGAGGAGGTCTGGGAGTTCCTGGGTCTGTTGGGGATATATGATGGATCCTGCATTCAATCTATGGGGA  
TGCTCGGAAGATCATTACTGAAGATTTGGTGAAGATAAGTACGTGGTTTACCGGCAAGTGTGCAACAGT  
GATCCTCCATGCTATGAGTTCCTGTGGGTCCACGAGCCTATGCTGAAACCACCAAGATGAGAGTCTGCG  
GTGTTTTGGCCGACAGCAGTAACACCAGTCCCGTTTATACCCACATCTGTATGAAGACGCTTTGATAGA  
TGAGGTAGAGAGACATTGAGACTGAGAGCT

**ACGCGT**ACGCGGCCGCTCGAGCAGAAACTCATCTCAGAAGAGGATCTGGCAGCAAATGATATCCTGGATT  
ACAAGGATGACGACGATAAGGTTTAA



[View online >](#)

**Protein Sequence:** >RC209603 protein sequence  
Red=Cloning site Green=Tags(s)

MPRGHKSRLRTCEKRQETNGQPQGLTGPQATAEKQEESHSSSSSRACLGDCRRSSDASIPQESQGVSP  
 GSPDAVVSYSKSDVAANGQDEKSPSTRDASVPQESQASPTGSPDAGVSGSKYDVAANGQDEKSPSTSH  
 DVSVPQESQASPTGSPDAGVSGSKYDVAANGQDEKSPSTRDASVPQESQASPTGSPDAGVSGSKYDVAANGQDEKSPSTSH  
 EKKESILKADMLKCVRREYKPYFPQILNRTSQHLVVAFGVELKEMDSSGESYTLVSKLGLPSEGILSGDN  
 ALPKSGLLMSLLVVIIFMNGNCATEEEVWEFLGLLGIYDGLHSIYGDARKIITEDLVQDKYVVYRQVCNS  
 DPPCYEFLWGPRAAETTKMRVLRVLADSSNTSPGLYPHLYEDALIDEVERALRLRA

TRTRPLEQKLISEEDLAANDILDYKDDDDKV

**Chromatograms:** [https://cdn.origene.com/chromatograms/mk6586\\_c06.zip](https://cdn.origene.com/chromatograms/mk6586_c06.zip)

**Restriction Sites:** SgfI-MluI

**Cloning Scheme:**



\* The last codon before the Stop codon of the ORF

**ACCN:** NM\_173523

**ORF Size:** 1221 bp

**OTI Disclaimer:** The molecular sequence of this clone aligns with the gene accession number as a point of reference only. However, individual transcript sequences of the same gene can differ through naturally occurring variations (e.g. polymorphisms), each with its own valid existence. This clone is substantially in agreement with the reference, but a complete review of all prevailing variants is recommended prior to use. [More info](#)

**OTI Annotation:** This clone was engineered to express the complete ORF with an expression tag. Expression varies depending on the nature of the gene.

**Components:** The ORF clone is ion-exchange column purified and shipped in a 2D barcoded Matrix tube containing 10ug of transfection-ready, dried plasmid DNA (reconstitute with 100 ul of water).

**Reconstitution Method:**

1. Centrifuge at 5,000xg for 5min.
2. Carefully open the tube and add 100ul of sterile water to dissolve the DNA.
3. Close the tube and incubate for 10 minutes at room temperature.
4. Briefly vortex the tube and then do a quick spin (less than 5000xg) to concentrate the liquid at the bottom.
5. Store the suspended plasmid at -20°C. The DNA is stable for at least one year from date of shipping when stored at -20°C.

**RefSeq:** [NM\\_173523.2](#), [NP\\_775794.2](#)

**RefSeq Size:** 1949 bp

**RefSeq ORF:** 1224 bp

**Locus ID:** 158809

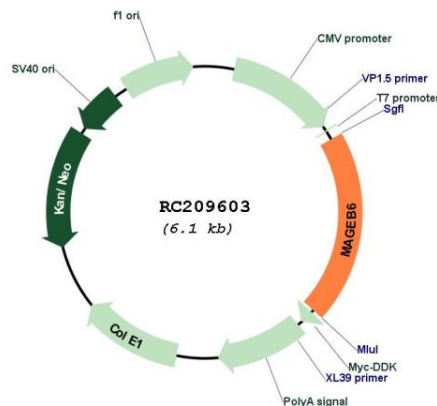
**UniProt ID:** [Q8N7X4](#)

**Cytogenetics:** Xp21.3

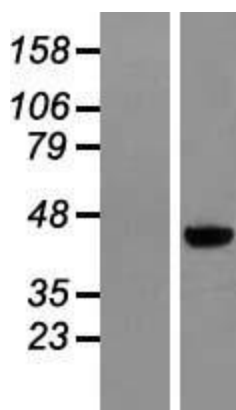
**MW:** 44 kDa

**Gene Summary:** This gene is a member of the MAGEB gene family. The members of this family have their entire coding sequences located in the last exon, and the encoded proteins show 50 to 68% sequence identity to each other. The promoters and first exons of the MAGEB genes show considerable variability, suggesting that the existence of this gene family enables the same function to be expressed under different transcriptional controls. This gene is expressed in testis, and in a significant fraction of tumors of various histological types. The MAGEB genes are clustered on chromosome Xp22-p21. [provided by RefSeq, Jul 2008]

### Product images:



Circular map for RC209603



Western blot validation of overexpression lysate (Cat# [LY406453]) using anti-DDK antibody (Cat# [TA50011-100]). Left: Cell lysates from untransfected HEK293T cells; Right: Cell lysates from HEK293T cells transfected with RC209603 using transfection reagent MegaTran 2.0 (Cat# [TT210002]).



Coomassie blue staining of purified MAGEB6 protein (Cat# [TP309603]). The protein was produced from HEK293T cells transfected with MAGEB6 cDNA clone (Cat# RC209603) using MegaTran 2.0 (Cat# [TT210002]).