

## Product datasheet for **RC209596**

### RD3 (NM\_183059) Human Tagged ORF Clone

#### Product data:

**Product Type:** Expression Plasmids  
**Product Name:** RD3 (NM\_183059) Human Tagged ORF Clone  
**Tag:** Myc-DDK  
**Symbol:** RD3  
**Synonyms:** C1orf36; LCA12  
**Mammalian Cell Selection:** Neomycin  
**Vector:** pCMV6-Entry (PS100001)  
**E. coli Selection:** Kanamycin (25 ug/mL)  
**ORF Nucleotide Sequence:** >RC209596 ORF sequence  
 Red=Cloning site Blue=ORF Green=Tags(s)

TTTTGTAATACGACTCACTATAGGGCGGCCGGAATTCGTCGACTGGATCCGGTACCGAGGAGATCTGCC  
 GCC**CGATCGCC**

ATGTCTCTCATCTCATGGCTTCGGTGGAAACGAGGCCCATCCCGGCTGTCCACCAGGAGCCCTGCTGAGA  
 TGGTGCTGGAGACGTTATGATGGAGCTGACGGGGCAGATGCGAGAGGCTGAGAGGCAGCAGCGGGAGCG  
 CAGCAATGCGGTCAGAAAGGTCTGCACCGGTGTGGACTACAGCTGGCTGGCCAGCACACCCCGGTCCACC  
 TATGACCTCAGCCCCATTGAGCGGTTGCAGCTGGAAGATGTCTGCGTTAAGATCCACCCATCCTATTGTG  
 GGCTGTATCCTCAGGTTCCGGCAGCTGCTGGCGGAGCAGGAGCCCGAGGTGCAGGAGGTGTCCAGCT  
 CTTCGGCTCGGTGCTGCAGGAGGTCCTGGAGAGGATGAAGCAGGAAGAGGAGGCCCAAGCTGACGCGC  
 CAGTGGAGCCTGCGGCCCGCGGAGCCTGGCCACCTTCAAGACCCGCGCGGCATCTCGCCCTTCGCCA  
 GCGACATCAGGACCATCTCCGAGGACGTGGAGCGGGACACACCCCGCCACTGCGGTCTGGAGCATGCC  
 CGAATTCGGGCGCCAAAGCCGAC

**ACGCGT**ACGCGGCCGCTCGAGCAGAACTCATCTCAGAAGAGGATCTGGCAGCAATGATATCCTGGATT  
 ACAAGGATGACGACGATAAGGTTTAA

**Protein Sequence:** >RC209596 protein sequence  
 Red=Cloning site Green=Tags(s)

MSLISWLRWNEAPSRLSTRSPAEMVLETLMMELTGQMRERQQRERSNAVRKVCTGVDYSWLASTPRST  
 YDLSPIERLQLEDVCKIHPSYCGPAILRFRQLLAEQEPEVQVSQLFRSVLQEVLERMKQEEEHKLTR  
 QWSLRPRGLATFKTRARISPFASDIRTISEDVERDTPPPLRSWSMPEFRAPKAD

**TRTRPLEQKLI**SEEDLAANDILDYKDDDDKV



[View online »](#)

**Chromatograms:** [https://cdn.origene.com/chromatograms/mk6356\\_e01.zip](https://cdn.origene.com/chromatograms/mk6356_e01.zip)

**Restriction Sites:** SgfI-MluI

**Cloning Scheme:**



**ACCN:** NM\_183059

**ORF Size:** 585 bp

**OTI Disclaimer:** The molecular sequence of this clone aligns with the gene accession number as a point of reference only. However, individual transcript sequences of the same gene can differ through naturally occurring variations (e.g. polymorphisms), each with its own valid existence. This clone is substantially in agreement with the reference, but a complete review of all prevailing variants is recommended prior to use. [More info](#)

**OTI Annotation:** This clone was engineered to express the complete ORF with an expression tag. Expression varies depending on the nature of the gene.

**Components:** The ORF clone is ion-exchange column purified and shipped in a 2D barcoded Matrix tube containing 10ug of transfection-ready, dried plasmid DNA (reconstitute with 100 ul of water).

**Reconstitution Method:**

1. Centrifuge at 5,000xg for 5min.
2. Carefully open the tube and add 100ul of sterile water to dissolve the DNA.
3. Close the tube and incubate for 10 minutes at room temperature.
4. Briefly vortex the tube and then do a quick spin (less than 5000xg) to concentrate the liquid at the bottom.
5. Store the suspended plasmid at -20°C. The DNA is stable for at least one year from date of shipping when stored at -20°C.

**RefSeq:** [NM\\_183059.3](#)

**RefSeq Size:** 4290 bp

**RefSeq ORF:** 588 bp

**Locus ID:** 343035

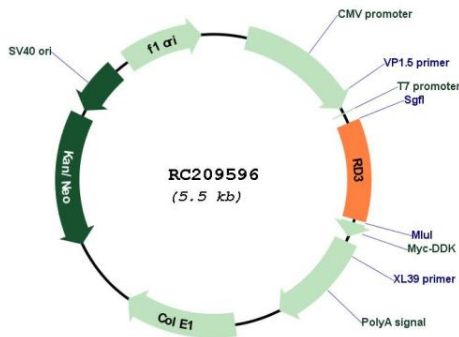
UniProt ID: [Q7Z3Z2](#)

Cytogenetics: 1q32.3

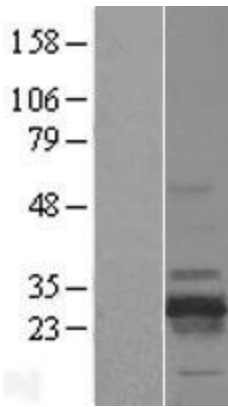
MW: 22.7 kDa

**Gene Summary:** This gene encodes a retinal protein that is associated with promyelocytic leukemia-gene product (PML) bodies in the nucleus. Mutations in this gene cause Leber congenital amaurosis type 12, a disease that results in retinal degeneration. Alternative splicing results in multiple transcript variants. [provided by RefSeq, Sep 2009]

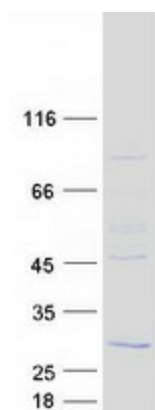
**Product images:**



Circular map for RC209596



Western blot validation of overexpression lysate (Cat# [LY431781]) using anti-DDK antibody (Cat# [TA50011-100]). Left: Cell lysates from untransfected HEK293T cells; Right: Cell lysates from HEK293T cells transfected with [RC228753] using transfection reagent MegaTran 2.0 (Cat# [TT210002]).



Coomassie blue staining of purified RD3 protein (Cat# [TP309596]). The protein was produced from HEK293T cells transfected with RD3 cDNA clone (Cat# RC209596) using MegaTran 2.0 (Cat# [TT210002]).