

Product datasheet for RC209595

HA1 (ARHGAP45) (NM_012292) Human Tagged ORF Clone

Product data:

Product Type:	Expression Plasmids
Product Name:	HA1 (ARHGAP45) (NM_012292) Human Tagged ORF Clone
Tag:	Myc-DDK
Symbol:	HA1
Synonyms:	HA-1; HLA-HA1; HMHA1
Mammalian Cell Selection:	Neomycin
Vector:	pCMV6-Entry (PS100001)
E. coli Selection:	Kanamycin (25 ug/mL)
ORF Nucleotide Sequence:	>RC209595 ORF sequence Red=Cloning site Blue=ORF Green=Tags(s)

TTTTGTAATACGACTCACTATAGGGCGGCCGGAATTCGTCGACTGGATCCGGTACCGAGGAGATCTGCC
GCC**CGATCGCC**

ATGTTCTCCAGGAAGAAACGAGAGCTCATGAAAACCCCTTCCATCTCGAAAAAGAACCAGCGCGGGAAGCC
CCAGCCCCGAGCCCTCGGGGAGCTGCCAGGAAGGATGGGGCTGACGCGGTGTTCCCGGACCAAGCCT
GGAGCCCGCCGCTGGGTCTCCGGCGTCAAGGCCACAGGGACCCCAAGCGGCCACCAGCCTGAGCCGC
CACGCCAGCGCGGCTGGTTCCTCCCGTGTGGGTGCTGCCTCTGGACACTGGGCCGAGCCACCGGAGCC
CACTGACAGCCGCGAGCCCGGGGAGCTGCCACCGAGGGTGCCGCCCCGAGCGTGTGAGGACATCTC
CCATCTGCTGGCGGACGTGGCCCGCTTCGCTGAGGGCCTTGAGAACTTAAGGAGTGTGTGCTGCATGAC
GACCTCCTTGAGGCCCGCCGCGCCGCGGGCCACGAGTGCCTGGGTGAGGCTCTGCGTGTGCATGCATCAGA
TCATCTCCAAGTACCCGCTGCTGAACACCGTGGAGACGCTCACCGCAGCCGGCACCCCTATTGCCAAGGT
CAAAGCCTTCCATTATGAGAGCAACAATGATCTGGAGAAACAGGAGTTCGAGAAGGCCCTGGAGACGATT
GCTGTGGCCTTCAGTAGCACAGTGTCCGAGTTCCTCATGGGTGAAGTGGACAGCAGCACCCTCCTAGCAG
TGCTCCTGGGGACTCGAGCCAGTCCATGGAAAGCCTGTATGGACCGGCAGTGAAGGACGCGCTCCAG
CCTGGATGACTGTGACCGCGCTGCCTGCCCGCCGAGGAGGTGGACGTGCTGCTACAGCGCTGTGAGGGG
GGCGTGGATGCCGCACTGTGTATGCCAAGAACATGGCCAAGTACATGAAGGACCTCAGCTACCTGG
AGAAGCGGACGACGCTGGAGATGGAGTTTGCCAAGGGCCTGCAGAAGATCGCTCACAACCTGCAGACAGAG
CGTCATGCAGGAGCCCCACATGCCGCTCCTGTCCATCTACTCGCTGGCCCTGGAGCAGGACCTGGAGTTC
GGCCACAGCATGGTGCAGGCGGTGGCACCTTGCAGACCCAGACCTTCATGCAGCCCTGACCTGCGGC
GGCTTGAACACGAGAAGCGCAGGAAGGAGATCAAGGAGCCTGGCACCGTGCCAGAGGAAGCTGCAAGA
GGCGGAGTCCAACCTGCGCAAGGCCAAGCAGGGTTACGTGCAGCGCTGCGAGGACCACGACAAGGCTCGC
TTCTCGTGGCCAAGGCGGAGGAGGAGCAGGCTGGCAGCGCGCCGGGAGCAGGCGGCACGCCACCAAGA
CCCTGGACAAGCGCGCGGCTGGAGGAGGAGGCCAAGAACAAGCGGAGGAAGCTATGGCCACCTACCG
CACCTGCTGGCCGACGCGAAGACGCAAGCAGGAGCTGGAGGATACCAAGGTGACGGCGCTGCGGCAG



[View online >](#)

ATCCAGGAGGTCATCCGGCAGAGCGACCAACCATCAAGTCGGCCACGATCTCCTACTACCAGATGATGC
ATATGCAGACGGCGCCGCTGCCGTGCACTTCCAGATGCTGTGTGAGAGCAGCAAGCTGTATGACCCAGG
CCAGCAGTACGCCTCCCACGTGCGCCAGCTGCAGCGGGACCAGGAGCCCGATGTGCACTACGACTTTGAG
CCCCACGTCTCCGCCAACGCCTGGTCCCCCGTCATGCGTGCCCGGAAGAGCAGCTTCAACGTGAGTGATG
TGGCGCGGCCGAGGCTGCCGGGAGCCCCAGAAGAAGCGGGTGCCTGAGGGCACACCTGCCAAGGA
CCACAGGGCCGGCGAGGACACCAGGTTCAAGTCATGGCCGCTCTCGATCTCAGACTCGGACAGTGGG
CCACGGAGGAGCTGGTGACCCAGACGGTGGAGCCGGGGCTTACGCCTTTGAGCAGGCTGACCTCAACGG
CATGACCCCCGAGCTGCCGGTGGCCGTGCCAGTGGACGTTCCGCCACGAGGGGCTGTCCAAGCGGCC
CGTACTACCCGGCTCCGGAAGCTCCGCACGCCCCCAAGTGCCGCGAGTGCAACAGCTACGTCTACTTCC
AGGGTGTGAGTGTGAAGAGTGTGCCTGGCCTGCCACAAGAAATGTCTGGAGACGCTGGCCATACAGTG
CGGGCACAAGAAGCTGCAGGGCCGCTGCAGCTGTTCCGGCAGGACTTACGCCACGCGGCCCGCAGCGCC
CCCAGCGCGTGCCTTTCATCGTCAAGAAGTGCCTGCGAGATCGAGCGCGGGCGCTGCGACCAAGG
GCATCTACCGGGTCAATGGGTAAGACACGCGTGGAGAAGCTGTCCAGGCCTTCGAGAACGGCAAGGA
GCTGGTCGAGCTGTCGAGGCCTCGCCCCACGACATCAGCAACGTCTCAAGCTCTACCTGCGTCAGCTT
CCCGAGCCGCTCATCTCCTTCCGCTTACCACGAGCTCGTAGGGCTGGCCAAGGACAGCCTGAAGGCGAG
AGGCCGAGGCCAAGGCGGCTCCCGGGCCGGCAGGACGCTCGGAGAGCGAGGCAAGTGGCGGTGGCCCT
GGCAGGTCCGGTCCGGGAGCTCCTGCGGGACCTGCCGCTGAGAACCAGGCGCTCGCTGCAGTACCTGCTG
CGTCACCTACGCAGGATCGTGGAGTGGAGCAGGACAACAAGTAGACCCCGGGAACCTGGGCATCGTGT
TCGGGCCACGCTGCTTCGGCCACGGCCACCGAGGCCACCGTGTCCCTCTCCTCCCTGGTGGATTATCC
CCATCAGGCCCGCTCATCGAGACTCTCATCGTCCACTACGGCCTGGTCTTCGAGGAGGAGCCGGAGGAG
ACCCCGGGGGCCAGGACGAGTCATCAACCAGCGAGCTGAGGTAGTCTCCAGGTGCCGTACCTGGAGG
CGGGCAGGGCGGTGCTACCCGCTGCAGGAGGCGCGGGACGGGTGCAGAGAATCCCGAGTTGTGTC
CAACGATTCGGACTCGGACCTAGAGGAGCCTCCGAGCTGCTGTCTCATCGGAGGCCAGTGCCTGGGC
CACCTCAGCTTCTGGAGCAGCAGCAGAGCGAGGCCAGCCTAGAGGTGGTCTTGGCAGCCACAGCGGCA
GTGAGGAGCAGCTGGAGGCCACAGCCGGGAGGACGGGGACGGGACGAGGACGGCCCGGCCAGCAGCT
CTCAGGATTCAACACCAACCAGTCCAACAACGTGCTGCAGGCCCACTGCCCCCATGAGGCTCCGTGGC
GGGCGGATGACTGGGCTCCTGCAGGAAAGGCAGCCGGAATTCGTG

AGCGGACCGACGCGTACGCGGCCGCTCGAGCAGAAACTCATCTCAGAAGAGGATCTGGCAGCAAATGATATCC
TGGATTACAAGGATGACGACGATAAGGTTTAA

Protein Sequence: >RC209595 protein sequence
 Red=Cloning site Green=Tags(s)

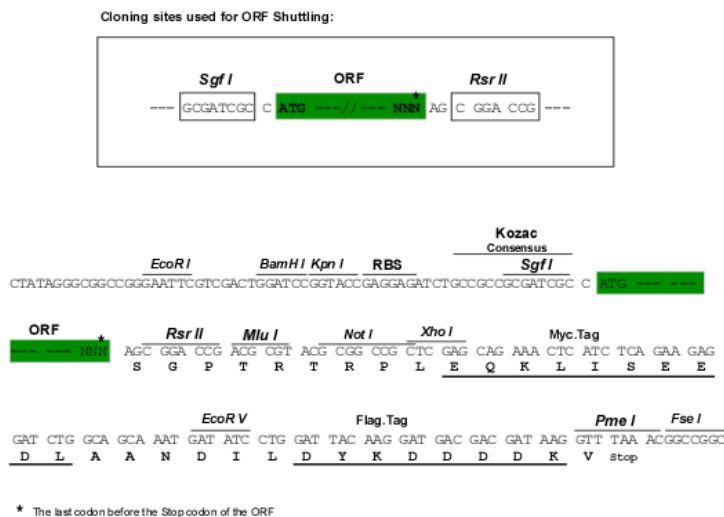
```
MFSRKKRELMKTPSISKKNRAGSPSPQPSGELPRKDGADAVFPGPSLEPPAGSSGVKATGTLKRPTLSR
HASAAGFPLSGAASWTLGRSHRSPLTAASPGELPTEGAGPDVVEDISHLLADVARFAEGLEKLKECVLHD
DLLEARRPRAHECLGEALRVMHQIISKYPLLNTVETLTAAGTLIAKVKAHFHYESNNDLEKQEFKALETI
AVAFSSTVSEFLMGEVDSSTLLAVPPGDSSQSMESLYGPGSEGTPPSLDDCDAGCLPAEEVDVLLQRCEG
GVDAALLYAKNMAKYMKDLSYLEKRITTEMEFAKGLQKIAHNCRQSVMQEPHMPLLSIYSLALEQDLEF
GHSMVQAVGTLQTQTFMQPLTLRRLHEHEKRRKEIKEAWHRAQRKLQEAESNLKAKQGYVQRCEDHDKAR
FLVAKAEQAGSAPGAGGTATKTLDKRRRLEEEAKNAEEAMATYRTCVAADAKTQKQLEDTKVTALRQ
IQEVIRQSDQTIKSATISYYQMMHMQTAPLPVHFQMLCESSKLYDPGQQYASHVRQLQRDQEPDVHYDFE
PHVSANAWSPVMRARKSSFNVSDVARPEAAGSPPEEGGCTEGTPAKDHRAGRGHQVHKSUPLSISDSDSG
LDPGPGAGDFKKFERTSSSGTMSSTEELVDPDGGAGASAFEQADLNGMTPPELVAVPSGPFREHGLSKAA
RTHRLRKLRTPAKCRECNSYVYVQGAEECECLACHKKCLETIAIQCGHKKLQGRLLQFLGQDFSHAARSA
PDGVPIVKKCVCEIERRALRTKGIYRVNGVKTRVEKLCQAFENGKELVELSQASPHDISNVLKLYLRQL
PEPLISFRLYHELVLGLAKDSLKAEAEAKAASRGRQDGESEAVAVALAGRLRELLRDLPPENRASLYLL
RHLRRIVEVEQDNKMTGPNLGI VFGPTLLRPRPTEATVSLSSLVDYPHQARVIETLIVHYGLVFEEPEE
TPGGQDESSNQRAEVVVQVYPYLEAGEAVVYPLQEAADGCRESRVVSNDSDSLEEASELLSSSEASALG
HLSFLEQQQSEASLEVASGSHSGSEEQLEATAREDGDGDEGPAQQLSGFNTNQSNVLAQAPLPPMLRGR
GRMTLGSRCRERQPEFV
```

SGPTRRPLEQKLISEEDLAANDILDYKDDDDKV

Chromatograms: https://cdn.origene.com/chromatograms/mk6624_a10.zip

Restriction Sites: SgfI-RsrII

Cloning Scheme:

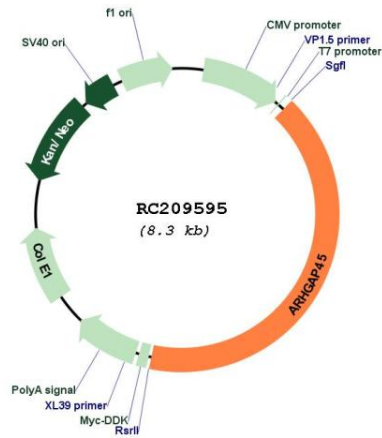


ACCN: NM_012292

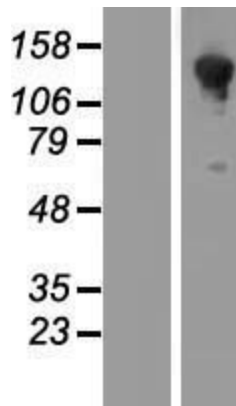
ORF Size: 3408 bp

OTI Disclaimer:	The molecular sequence of this clone aligns with the gene accession number as a point of reference only. However, individual transcript sequences of the same gene can differ through naturally occurring variations (e.g. polymorphisms), each with its own valid existence. This clone is substantially in agreement with the reference, but a complete review of all prevailing variants is recommended prior to use. More info
OTI Annotation:	This clone was engineered to express the complete ORF with an expression tag. Expression varies depending on the nature of the gene.
Components:	The ORF clone is ion-exchange column purified and shipped in a 2D barcoded Matrix tube containing 10ug of transfection-ready, dried plasmid DNA (reconstitute with 100 ul of water).
Reconstitution Method:	<ol style="list-style-type: none">1. Centrifuge at 5,000xg for 5min.2. Carefully open the tube and add 100ul of sterile water to dissolve the DNA.3. Close the tube and incubate for 10 minutes at room temperature.4. Briefly vortex the tube and then do a quick spin (less than 5000xg) to concentrate the liquid at the bottom.5. Store the suspended plasmid at -20°C. The DNA is stable for at least one year from date of shipping when stored at -20°C.
RefSeq:	NM_012292.1
RefSeq Size:	5488 bp
RefSeq ORF:	3411 bp
Locus ID:	23526
UniProt ID:	Q92619
Cytogenetics:	19p13.3
MW:	124.6 kDa
Gene Summary:	Contains a GTPase activator for the Rho-type GTPases (RhoGAP) domain that would be able to negatively regulate the actin cytoskeleton as well as cell spreading. However, also contains N-terminally a BAR-domain which is able to play an autoinhibitory effect on this RhoGAP activity.[UniProtKB/Swiss-Prot Function]

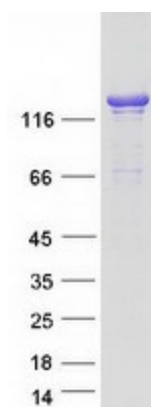
Product images:



Circular map for RC209595



Western blot validation of overexpression lysate (Cat# [LY415855]) using anti-DDK antibody (Cat# [TA50011-100]). Left: Cell lysates from untransfected HEK293T cells; Right: Cell lysates from HEK293T cells transfected with RC209595 using transfection reagent MegaTran 2.0 (Cat# [TT210002]).



Coomassie blue staining of purified ARHGAP45 protein (Cat# [TP309595]). The protein was produced from HEK293T cells transfected with ARHGAP45 cDNA clone (Cat# RC209595) using MegaTran 2.0 (Cat# [TT210002]).