

Product datasheet for **RC209594**

WDR93 (NM_020212) Human Tagged ORF Clone

Product data:

Product Type:	Expression Plasmids
Product Name:	WDR93 (NM_020212) Human Tagged ORF Clone
Tag:	Myc-DDK
Symbol:	WDR93
Synonyms:	C1d-87; CFAP297; FAP297
Mammalian Cell Selection:	Neomycin
Vector:	pCMV6-Entry (PS100001)
E. coli Selection:	Kanamycin (25 ug/mL)



[View online »](#)

**ORF Nucleotide
Sequence:**

>RC209594 ORF sequence

Red=Cloning site Blue=ORF Green=Tags(s)

 TTTTGAATACGACTCACTATAGGGCGGCCGGAATTCGTCGACTGGATCCGGTACCGAGGAGATCTGCC
GCC**CGATCGCC**

 ATGTCATTCCCAAGAGGAAGTCAGACCCAGAAAATAAGCACCCATTGGTACACGAAAGGGACCATTGG
AGGTGCCACCCCAACAGAGAAGGACTGGCCTAAAGACGATGAACAGGATCATGTCCTCGTGATCCAGA
TGAGGAGCTGGATTCTTGCTCAGCCTTATCGAATGATCAACAAGCTGGTGAACCTTCTGTTTGACCAG
TCTTGGGAAATTATTGAAGAGAGAAACGCACTGAGGGAAGCTGAGAGCAGCCAGATCCAGCCACCGTCT
ACCCTCCACTGGAGAAATCCAGCTCAACAAAATGCCAAATTGTATGGCTGTTTCCCAAGACTATGTGTT
TATTGGAGGAGCCAAAGGATTCTCAATTTATAATCTGTACAGTGCTAAACAAATATATGCGTGGGAGAAG
CTTAAGGTTGATGTCACCTCCATCTGGCCACAGATTTAGGGAATGAAATACTCATTGCTCCTGTGGATG
AAATGGGTATCATTAGACTCTTTATTTTATAAGGAAGGACTTTACCTAGTCAAAGCCATCAATGAAGT
GGATGATACCAGCAAGCAAACTACCTGTATAAAGATGGAGATCTCTCAAGGAGGGGACTTTGCAGCCTTC
CTCCTACAAGGAGCCGGAGATATTTGGCTGGATGTGTATAAATTGCCCAAGGAGACTTGGCTCAAGAAAC
TAGAGCACCCCAACTCACTTCAAATCCAAAGAAAAAGTCAGACAGCCCAACTGAACTCCCTTGGTCC
CATTTCTGCAGATCCTTTAGAAATGGATGCAATGTTAGTTTTAAAGGAGACATTAATTTAGTCTTCCA
GTTTACATAATGAAGATCAAACCACTAAGCCTGTTACAGGCACCACATTCAAAAGCCCCCTGGAAGTCT
TTGCAAAGATCAAGGACTGCTACGACTGGGCTCCGGGCAGAATCATTTTCATCAAGGACAGTCAGTGGGA
GCAGCAAGCTGAGATCTTCAACGCTTCTACAAGAAGTACCTAGATAGGGAGTGGGAGGAAGAGCCACTC
AGTACGGCCACCTTCTATTTCTTCTTCTAGCTGCCTATTTGCAATGCCACCGGAAGTCAAGGGCCCTC
CAGGAATGGCCTGTGCTTGGTATACACTGGACCAGAAGTCACAATTTCTTCTGTATTCACTAAACCG
AACTCTAAAGGATAAAGCTGACCCCGAGGGTGTGTGGCCCTGTGCTGCGCCCATTCAGTCTCTCAGCTC
AGCTGCTCCTCCTACCTGGTGGCTGCGAGGATGGTGTGCTCACGCTGTGGGACCTGGCCAAAG
GATTCCCTCTTGGGGTCGCTGCTTCTCAGGGATGTTTCTGCCAAAGCATTCACTTCTAAAATATTT
CTCGGTCCACAAAGGACAGAATATGTATCCTGAAGGTCAAGTGAATCCCAAATGAAATGTGTGGTGCTG
TGCACAGACGCCTCCCTCCATCTGGTGGAGGCTAGCGGGACCCAAGGACCCACCATCAGTGTGCTTGTG
AGAGGCCTGTAAGCACCTGGATAAAACCATCTGTGCCGTGGCCCCAGTCCCAGCCTTACCTGGCATGGT
GCTCATCTTTTCCAAGAATGGCTCTGTGTGCCTTATGGATGTGGCCAAGCGTGAAATCATCTGTGCCTTT
GCCCTCCGGGAGCCTTCTCTGGAGGTCCCCTGGAAGCCAGTGTGCTGTGTCTCCAGACCATCCAT
GTTTCCTGCTCCGAGGAGACTATTCACATGAAACTGCGTCCACCGACGATGCTGGAATCCAATATTCTGT
TTTCTATTTTAATTTGAGGCCTGCCACTCCTGGAAAATATCTCAAAAAATTGTACCATTCTCAAAGG
GACTTGGATAACATGGCCTTCCCCAAGCACTGCCACTGGAGAAGAGATGTGAGCGTTTCTCCAGAAGA
GCTATCGGAAGCTGGAGAAGAACCAGAGAAGGAGGAGCACTGGGCCCGGCTTCAGAGGTACTCCTT
GTCGCTCCAGAGAGAGAACTTCAAGAAG

ACGCGTACGCGGCCGCTCGAGCAGAACTCATCTCAGAAGAGGATCTGGCAGCAAATGATATCCTGGATT
ACAAGGATGACGACGATAAGGTTTAA

Protein Sequence: >RC209594 protein sequence
 Red=Cloning site Green=Tags(s)

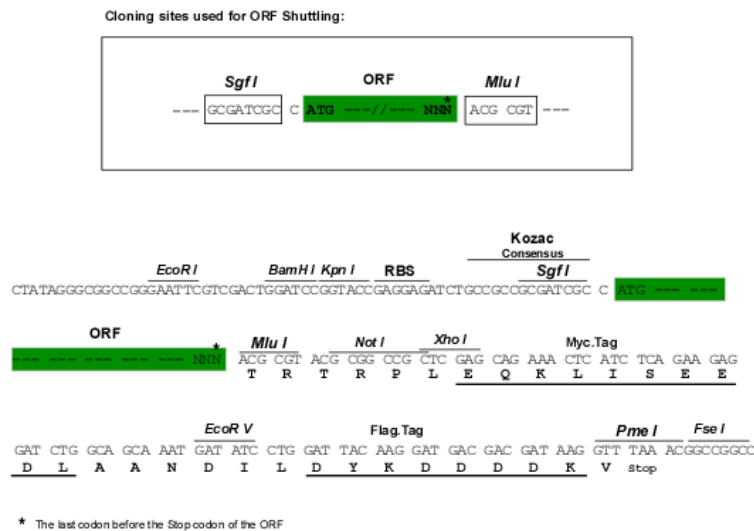
MSFPRGSQTQKIKHPIGTRKGPLEVPPPTTEKDWPKDDEQDHVLVDPDEELDSLPPQPYRMINKLVNLLFDQ
 SWEIIIEERNALREAESSQIQPTVYPPLGEIQLNKMPCMAVSQDYVFIGGAKGFSIYNLYSAKQIYAWEK
 LKVDVTSIWATDLGNEILIAPVDEMGIIIRLFYFYKEGLYLKAINVDDTSKQTTCTIKMEISQGGDFAAF
 LLQGAGDIWLDVYKLPKETWLKKLEHPQLTSNPKKKVRQPQLNSLGPISADPLEMDANVSFKGDIKLSLP
 VYIMKIKPPKPVGTGTFKSPLEVFAGIKDCYGLGSGQNHFIKDSQWEQQAEIFNASYKKYLDREWEEEL
 STATFYLLPSCLFAMPPEVKGPSGMACVLGIHWTRSHNFFLYSLNRTLKDKADPEGVWPCAAPIAVSQ
 SCSSSYLVLACEDGVLTLWDLAKGFPLGVAALPQGCFCQSIHFLKYFSVHKQNMYPEGQVKSQMKCVVL
 CTDASLHLVEASGTQGPTISVLVERPVKHLDKTICAVAPVPALPGMVLIFSKNGSVCLMDVAKREIICAF
 APPGAPFLEVPWKPVFVSPDHPCFLLRGDYSHETASTDDAGIQSVFYFNFEACPLLENISKNCTIPQR
 DLDNMAFPQALPLEKRCERFLQSYRKLEKNPEKEEEHARLQRYSLSLQRENFKK

TRTRPLEQKLISEEDLAANDILDYKDDDDKV

Chromatograms: https://cdn.origene.com/chromatograms/mk6524_b07.zip

Restriction Sites: SgfI-MluI

Cloning Scheme:



ACCN: NM_020212

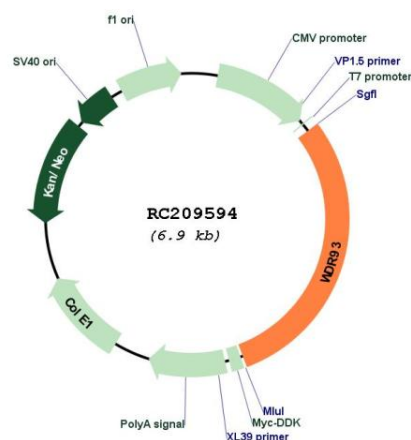
ORF Size: 2058 bp

OTI Disclaimer: The molecular sequence of this clone aligns with the gene accession number as a point of reference only. However, individual transcript sequences of the same gene can differ through naturally occurring variations (e.g. polymorphisms), each with its own valid existence. This clone is substantially in agreement with the reference, but a complete review of all prevailing variants is recommended prior to use. [More info](#)

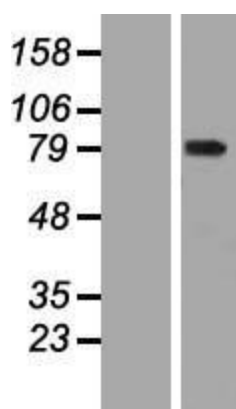
OTI Annotation: This clone was engineered to express the complete ORF with an expression tag. Expression varies depending on the nature of the gene.

Components:	The ORF clone is ion-exchange column purified and shipped in a 2D barcoded Matrix tube containing 10ug of transfection-ready, dried plasmid DNA (reconstitute with 100 ul of water).
Reconstitution Method:	<ol style="list-style-type: none"> 1. Centrifuge at 5,000xg for 5min. 2. Carefully open the tube and add 100ul of sterile water to dissolve the DNA. 3. Close the tube and incubate for 10 minutes at room temperature. 4. Briefly vortex the tube and then do a quick spin (less than 5000xg) to concentrate the liquid at the bottom. 5. Store the suspended plasmid at -20°C. The DNA is stable for at least one year from date of shipping when stored at -20°C.
RefSeq:	<u>NM_020212.2</u>
RefSeq Size:	2445 bp
RefSeq ORF:	2061 bp
Locus ID:	56964
UniProt ID:	<u>Q6P2C0</u>
Cytogenetics:	15q26.1
MW:	77.4 kDa

Product images:



Circular map for RC209594



Western blot validation of overexpression lysate (Cat# [LY412506]) using anti-DDK antibody (Cat# [TA50011-100]). Left: Cell lysates from untransfected HEK293T cells; Right: Cell lysates from HEK293T cells transfected with RC209594 using transfection reagent MegaTran 2.0 (Cat# [TT210002]).