

Product datasheet for RC209592

BARX1 (NM_021570) Human Tagged ORF Clone

Product data:

Product Type:	Expression Plasmids
Product Name:	BARX1 (NM_021570) Human Tagged ORF Clone
Tag:	Myc-DDK
Symbol:	BARX1
Mammalian Cell Selection:	Neomycin
Vector:	pCMV6-Entry (PS100001)
E. coli Selection:	Kanamycin (25 ug/mL)
ORF Nucleotide Sequence:	>RC209592 ORF sequence Red=Cloning site Blue=ORF Green=Tags(s)

TTTTGTAATACGACTCACTATAGGGCGGCCGGAATTCGTCGACTGGATCCGGTACCGAGGAGATCTGCC
GCC**CGATCGCC**

ATGCAGCGGCCGGGGAGCCGGGCGCCGCGCTTCGGCCCGCCGAGGGCTGCGCGGACCACCGGCCGC
ACCGCTATCGCAGCTTCATGATTGAGGAGATCCTACGGAGCCACCCGGGCCAAGGGCGCCGCGCCGC
AGCCGCGCTGCCGCGGGCGGCGAGCTGCTGAAGTTCGGCGTGCAGGCGCTGCTGGCGGCGCGCCCTTC
CACAGCCACCTGGCCGTGCTGAAGGCCGAGCAGGCGCGGTGTTCAAGTCCCACTGGCGCCGCTGGGCT
GTTCAAGGCTGAGCTCTGCGTTGCTGGCGCAGGCGCCGGCTGCCCGGCCGCGGGTGGCCACACT
GCCGCTCGAGTTGCAGCTCCGCGGAAGCTGGAGCGGCAGGCCCTGGGAGCCAGGCACCAAAGCCAAG
AAGGGGCGTCGGAGCCGCACTGTGTTACCGAGCTGCAGCTGATGGCCTGGAGAAACGCTTCGAGAAGC
AGAAGTACCTTCCACGCCGGACAGAATAGATCTTGCTGAGTCCCTGGCCTGAGCCAGTTGAGGTGAA
GACGTGTTACAGAATCGGAGGATGAAGTGAAGAAAAATAGTCTGCAGGCGCGCCGCTGGAGTCTCC
ACCAAGCCCAAGGGCGGCCAAGAAGAACTCAATCCAACGAGCGAGCAGCTTACTGAGCAGGAGCGTG
CCAAGGATGCAGAGAAACCGCGGAGGTGCCGGGCGAGCCAGCGACAGGAGCCGCGAGGAC

ACGCGTACGCGGCCGCTCGAGCAGAAACTCATCTCAGAAGAGGATCTGGCAGCAAATGATATCCTGGATT
ACAAGGATGACGACGATAAGGTTTAA



[View online »](#)

Reconstitution Method:

1. Centrifuge at 5,000xg for 5min.
2. Carefully open the tube and add 100ul of sterile water to dissolve the DNA.
3. Close the tube and incubate for 10 minutes at room temperature.
4. Briefly vortex the tube and then do a quick spin (less than 5000xg) to concentrate the liquid at the bottom.
5. Store the suspended plasmid at -20°C. The DNA is stable for at least one year from date of shipping when stored at -20°C.

RefSeq: [NM_021570.3](#), [NP_067545.3](#)

RefSeq Size: 1498 bp

RefSeq ORF: 765 bp

Locus ID: 56033

UniProt ID: [Q9HBU1](#)

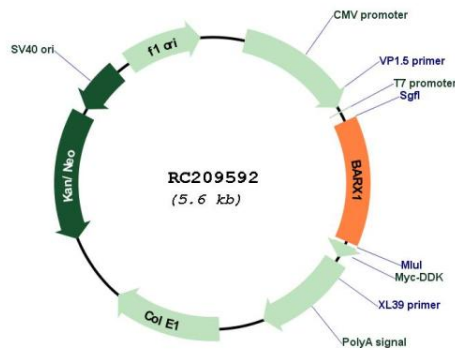
Cytogenetics: 9q22.32

Protein Families: Transcription Factors

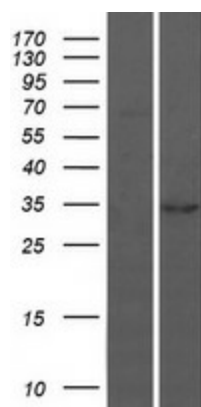
MW: 27.3 kDa

Gene Summary: This gene encodes a member of the Bar subclass of homeobox transcription factors. Studies of the mouse and chick homolog suggest the encoded protein may play a role in developing teeth and craniofacial mesenchyme of neural crest origin. The protein may also be associated with differentiation of stomach epithelia. [provided by RefSeq, Jul 2008]

Product images:



Circular map for RC209592



Western blot validation of overexpression lysate (Cat# [LY411984]) using anti-DDK antibody (Cat# [TA50011-100]). Left: Cell lysates from untransfected HEK293T cells; Right: Cell lysates from HEK293T cells transfected with RC209592 using transfection reagent MegaTran 2.0 (Cat# [TT210002]).