

Product datasheet for **RC209591**

MAMDC2 (NM_153267) Human Tagged ORF Clone

Product data:

Product Type:	Expression Plasmids
Product Name:	MAMDC2 (NM_153267) Human Tagged ORF Clone
Tag:	Myc-DDK
Symbol:	MAMDC2
Mammalian Cell Selection:	Neomycin
Vector:	pCMV6-Entry (PS100001)
E. coli Selection:	Kanamycin (25 ug/mL)



[View online »](#)

ORF Nucleotide Sequence:

>RC209591 representing NM_153267
 Red=Cloning site Blue=ORF Green=Tags(s)

TTTTGTAATACGACTCACTATAGGGCGGCCGGAATTCGTCGACTGGATCCGGTACCGAGGAGATCTGCC
 GCC**CGGATCGCC**

ATGCTGTTAAGGGCGTCTCTGGCGTTGCAAGCCCTGCAGCTCGCCGGTGCCCTCGACCTGCCCGCTG
 GGTCTGTGCCTTTGAAGAGAGCACTTGC GGCTTTGACTCCGTGTTGGCCTCTCTGCCGTGGATTTTAAA
 TGAGGAAGGCCATTACATTTATGTGGATACCTCCTTTGGCAAGCAGGGGGAGAAAGCTGTGCTGCTAAGT
 CCTGACTACAGGCTGAGGAATGGAGCTGCCTCCGTTTGGTCTACCAGATAACCACATCTTCGGAGTCTC
 TGTGAGATCCCAGCCAGCTGAACCTCTACATGAGATTTGAAGATGAAAGCTTTGATCGCTTGCTTTGGTC
 AGCTAAGGAACCTTCAGACAGCTGGCTCATAGCCAGCTTGGATTTGCAAAAACAGTTCCAAGAAATCAAG
 ATTTTAATAGAAGGTGTACTAGGACAGGAAACACAGCCAGCATCGCACTATTTGAAATCAAGATGACAA
 CCGGCTACTGTATTGAATGTGACTTTGAAGAAAATCATCTCTGTGGCTTTGTGAACCGCTGGAATCCCAA
 TGTGAAGTGGTTTGTGGAGGAGGAAGTATTCGGAATGTCCACTCCATTCTCCACAGGATCACACCTTC
 AAGAGTGAAGTGGCCACTACATGTACGTGGACTCAGTTTATGTGAAGCACTTCCAGGAGGTGGCACAGC
 TCATCTCCCCGTTGACCACGGCCCCATGGCTGGCTGCCTGTCTATTTTATTACCAGATCCAGCAGGGGAA
 TGACAATGTCTTTCCCTTTACTCTCGGATGTGGCTGGCCTTTACGAGGAAATCTGAAAGCAGACAGG
 CCAGGGAATGCTGCCTGGAACCTTGC GGAGGTCGAGTTCAATGCTCCTTACCCCATGGAGGTTATTTTGT
 AAGTTGCTTTCAATGGTCCCAAGGGAGGTTATGTTGCCCTGGATGATATTTCAATCTCTCCTGTTCACTG
 CCAGAATCAGACAGAACTTCTGTTCAGTGCCGTGGAAGCCAGCTGCAATTTTGAAGCAAGATCTCTGCAAC
 TTTTACCAAGATAAAGAAGGTCCAGGTTGGACCCGAGTGAAGTAAAACCAACATGTATCGGGCTGGAG
 ACCACACTACAGGCTTAGGGTATTACCTGCTAGCCAACACAAAGTTCACATCTCAGCCTGGCTACATTGG
 AAGGCTCTATGGGCCCTCCCTACCAGGAACTTGCAAGTATTGTCTGCGTTTTTCATTATGCCATCTATGGA
 TTTTTAAAAATGAGTGACACCCTAGCAGTTTACATCTTTGAAGAGAACCATGTGGTTCAAGAGAAGATCT
 GGTCTGTGTTGGAGTCCCAAGGGGTGTTGGATGCAAGCTGAAATCACCTTTAAGAAGCCCATGCCTAC
 CAAGGTGGTTTTTATGAGCCTATGCAAAAGTTTCTGGGACTGTGGGCTTGTAGCCCTGGATGACATTACA
 ATACAATTGGGAAGCTGCTCATCTTCAGAGAACTTCCACCTCCACCTGGAGAGTGTACTTTGAGCAAG
 ATGAATGTACATTTACTCAGGAGAAAAGAAACCGAGCAGCTGGCACAGGAGGAGGGGAGAACTCCAC
 TTCTACACAGGACCAAGGGAGATCACACTACTGGGTAGGCTACTACATGTACATTGAGGCTCCCAT
 ATGGTGTATGGACAAAAGCACGCCTCTTGTCCAGGCCTCTGCGAGGAGTCTCTGAAAACACTGCTTGA
 CCTTTTCTACCACATGTATGGAGGGGGCACTGGCCTGCTGAGTGTATCTGAAAAAGGAAGAAGACAG
 TGAAGAGTCCCTTTATGGAGGAGAAGAGTGAACAGAGCATTTCTGGCTACGAGCACTGATTGAATAC
 AGCTGTGAGAGGCAACACCAGATAATTTTTGAAGCCATTTCGAGGAGTATCAATAAGAAGTATTTGCCA
 TTGATGATGTTAAATTTAGGCAGGACCCTGTGGAGAAATGGAAGATACAACTCAACAATCATCAGGATA
 TTCTGAGGACTTAAATGAAATTGAGTAT

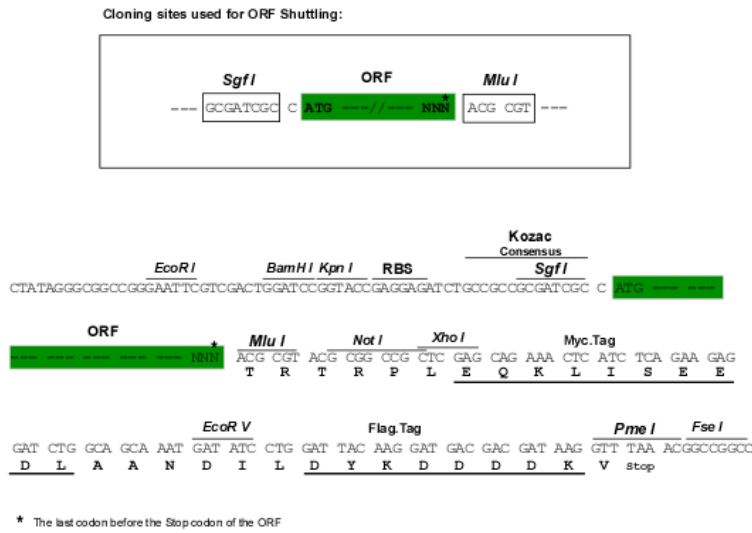
ACGCGTACGCGGGCGCTCGAGCAGAACTCATCTCAGAAGAGGATCTGGCAGCAATGATATCCTGGATT
 ACAAGGATGACGACGATAAGGTTTAA

Protein Sequence: >RC209591 representing NM_153267
 Red=Cloning site Green=Tags(s)

MLLRGVLALQALQLAGALDLPAGSCAFEESTCGFDSVLASLPWILNEEGHYIYVDTSF GKQGEKAVLLS
 PDLQAEWWSCLRLVYQITTSSESLSDPSQLNLYMRFEDSFDRLLWSAKEPSDSL IASLDLQNSSKFK
 ILIEGVLGQGNTASIALFEIKMTTGYCIECDFEENHLCGFVNRWNPVNVFVGGGSRNVHSILPQDHTF
 KSELGHYMYVDSVYVKHFQEVAQLISPLTTAPMAGCLSFYYQIQQGNNDNVFSLYTRDVAGLYEEIWKADR
 PGNAAWNLAEVEFNAPYPMEVIFEVAFNGPKGGYVALDDISFSPVHCQNQTSELLFSAVEASCNFEQDLN
 FYQDKEGPGWTRVKVKPNMYRAGDHTTGLGYLLANTKFTSQPGYIGRLYGPSLPGNLQYCLRFHYAIYG
 FLKMSDTLAVYIFEENHVQEKIWSVLES PRGVMQAEITFKKPMPTKVVFM SLCKSFWDGCLVALDDIT
 IQLGSCSSSEKLPPPGECTFEQDECTFTQEKNRSSWRRRGETPTSYTGPKGDHTTG VGYMYIEASH
 MUYGQKARLLSRPLRGVSGKHCLTFFYHMYGGTGLLSVYLKKEEDSEESLLWRRRGEQSISWLRALIEY
 SCERQHQIIFEAIRGVSIRSDIAIDDKVFQAGPCGEMEDTTQSSGYS EDLNEIEY

TRTRP L E Q K L I S E E D L A A N D I L D Y K D D D D K V

Chromatograms: https://cdn.origene.com/chromatograms/mg4946_f09.zip
Restriction Sites: SgfI-MluI
Cloning Scheme:



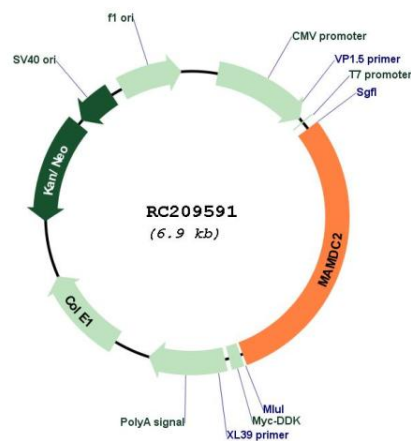
ACCN: NM_153267

ORF Size: 2058 bp

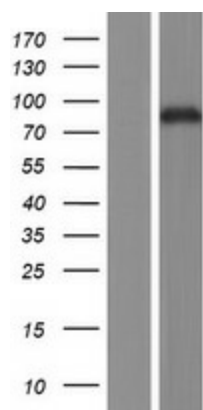
OTI Disclaimer: The molecular sequence of this clone aligns with the gene accession number as a point of reference only. However, individual transcript sequences of the same gene can differ through naturally occurring variations (e.g. polymorphisms), each with its own valid existence. This clone is substantially in agreement with the reference, but a complete review of all prevailing variants is recommended prior to use. [More info](#)

OTI Annotation: This clone was engineered to express the complete ORF with an expression tag. Expression varies depending on the nature of the gene.

Components:	The ORF clone is ion-exchange column purified and shipped in a 2D barcoded Matrix tube containing 10ug of transfection-ready, dried plasmid DNA (reconstitute with 100 ul of water).
Reconstitution Method:	<ol style="list-style-type: none"> 1. Centrifuge at 5,000xg for 5min. 2. Carefully open the tube and add 100ul of sterile water to dissolve the DNA. 3. Close the tube and incubate for 10 minutes at room temperature. 4. Briefly vortex the tube and then do a quick spin (less than 5000xg) to concentrate the liquid at the bottom. 5. Store the suspended plasmid at -20°C. The DNA is stable for at least one year from date of shipping when stored at -20°C.
RefSeq:	<u>NM_153267.3, NP_694999.2</u>
RefSeq Size:	3610 bp
RefSeq ORF:	2061 bp
Locus ID:	256691
UniProt ID:	<u>Q7Z304</u>
Cytogenetics:	9q21.12
Domains:	MAM
Protein Families:	Secreted Protein
MW:	77.4 kDa

Product images:


Circular map for RC209591



Western blot validation of overexpression lysate (Cat# [LY407117]) using anti-DDK antibody (Cat# [TA50011-100]). Left: Cell lysates from untransfected HEK293T cells; Right: Cell lysates from HEK293T cells transfected with RC209591 using transfection reagent MegaTran 2.0 (Cat# [TT210002]).