

Product datasheet for RC209587

CENPL (NM_033319) Human Tagged ORF Clone

Product data:

Product Type:	Expression Plasmids
Product Name:	CENPL (NM_033319) Human Tagged ORF Clone
Tag:	Myc-DDK
Symbol:	CENPL
Synonyms:	C1orf155; CENP-L; dj383J4.3
Mammalian Cell Selection:	Neomycin
Vector:	pCMV6-Entry (PS100001)
E. coli Selection:	Kanamycin (25 ug/mL)
ORF Nucleotide Sequence:	>RC209587 ORF sequence Red=Cloning site Blue=ORF Green=Tags(s)

TTTTGTAATACGACTCACTATAGGGCGCCGGGAATTCGTCGACTGGATCCGGTACCGAGGAGATCTGCC
GCC**CGATCGCC**

ATGGATTCTTACAGTGCACCAGAGTCAACTCCTAGTGCATCCTCAAGACCTGAAGATTACTTTATAGGTG
CCACTCCTCTGCAGAAACGATTAGAATCGGTCCAGGAAGCAGAGTTCATTTATCCTGACTCCACCTCGAAG
GAAAATCCCCAGTGTTTCGAGTTGCAGGAAGATGTTGACCCCAAAGGTTGCATTCTCTGCATAAA
CAGTGGACTTTATATAGTTAACTCCCTTATATAAATTCTCTATAGTAATCTCAAAGAGTATTCTAGAC
TTCTCAATGCTTTTATTGTTGCTGAAAAGCAAAAAGGACTTGCTGTGGAAGTGGGAGAAGACTTCAACAT
CAAAGTGATTTTTCTACTCTCCTAGGAATGAAAGGAACACAAAGGGACCCGGAAGCATTCTTGTCCAG
ATTGTGTCAAAATCTCAATTGCCATCTGAGAATAGAGAAGGTAAGTGCTGTGGACTGGCTGGTTCTGCT
GTGATTTGGAGACAGTCTTCTGGAGACTGTTTCAGAAGATTTACCTGTCTGCCCTTATCCTTGCAAA
TGGAGCAGAGTCTAACACAGCAATAATTGGAACCTGGTTTCAGAAAACCTTTGACTGTTATTTAGTCCCT
TTAGCAATCAATGCATTTAATCTTTCTGGATGGCTGCCATGTGGACTGCATGCAAAATGGACCATTATG
TGGCTACTACTGAATTTCTTTGGTCTGTACCCTGTAGCCCTCAAAGTCTGGACATTTCTTTTCGCAATACA
TCCAGAGGATGCAAAAGCTCTATGGGACAGTGTCCACAAAACACCTGGGGAGGTTACCCAGGAAGAAGTT
GACCTATTCATGGATTGCCTTTATTCACATTTCCATAGACATTTCAAATTCATTTATCAGCCACAAGAT
TAGTTCGTGTTTCAACATCTGTAGCTTCAGCACATACTGATGGAAAAATAAAGATTCTGTGCATAAATA
CCTTATTGGAGTGTTAGCATATTTGACAGAAGTGGCAATTTTTCAAATTGAG

ACGCGTACGCGGCCGCTCGAGCAGAAACTCATCTCAGAAGAGGATCTGGCAGCAATGATATCCTGGATT
ACAAGGATGACGACGATAAGGTTTAA



[View online »](#)

Protein Sequence: >RC209587 protein sequence
Red=Cloning site Green=Tags(s)

MDSYSAPESTPSASSRPEDYFIGATPLQKRLSEVRKQSSFILTPRRKIPQCSQLQEDVDPQKVAFLLHK
 QWTL YSL TPLYKFSY SNLKEYSRL LNAF IVAEKQKGLAVEVGEDFN I KVI FSTLLGMKGTQRDPEAFLVQ
 IVSKSQLPSENREGKVLWTGWFCVFGDSLLETVSEDF TCLPLFLANGAESNTA IIGTW FQKTFDCYFSP
 LA I NAFNL SWMAAMWTACKMDHYVATTEFLWSVPCSPQSLDISFAIHPEDAKALWDSVHKTPGEVTQEEV
 DLFMDCLYSHFHRHFKIHL SATRLVRVSTSVASHTDGIKILCHKYLIGVLA YL TELAI FQIE

TRTRPLEQKLISEEDLAANDILDYKDDDDKV

Chromatograms: https://cdn.origene.com/chromatograms/mk6366_d05.zip

Restriction Sites: SgfI-MluI

Cloning Scheme:



ACCN: NM_033319

ORF Size: 1032 bp

OTI Disclaimer: The molecular sequence of this clone aligns with the gene accession number as a point of reference only. However, individual transcript sequences of the same gene can differ through naturally occurring variations (e.g. polymorphisms), each with its own valid existence. This clone is substantially in agreement with the reference, but a complete review of all prevailing variants is recommended prior to use. [More info](#)

OTI Annotation: This clone was engineered to express the complete ORF with an expression tag. Expression varies depending on the nature of the gene.

Components: The ORF clone is ion-exchange column purified and shipped in a 2D barcoded Matrix tube containing 10ug of transfection-ready, dried plasmid DNA (reconstitute with 100 ul of water).

Reconstitution Method:

1. Centrifuge at 5,000xg for 5min.
2. Carefully open the tube and add 100ul of sterile water to dissolve the DNA.
3. Close the tube and incubate for 10 minutes at room temperature.
4. Briefly vortex the tube and then do a quick spin (less than 5000xg) to concentrate the liquid at the bottom.
5. Store the suspended plasmid at -20°C. The DNA is stable for at least one year from date of shipping when stored at -20°C.

RefSeq: [NM_033319.3](#), [NP_201576.1](#)

RefSeq Size: 2555 bp

RefSeq ORF: 1035 bp

Locus ID: 91687

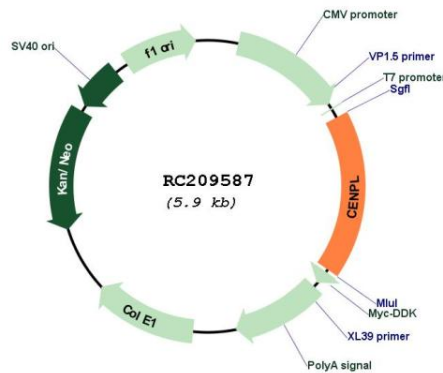
UniProt ID: [Q8N0S6](#)

Cytogenetics: 1q25.1

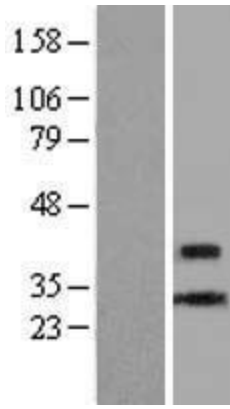
MW: 39 kDa

Gene Summary: CENPL is a subunit of a CENPH (MIM 605607)-CENPI (MIM 300065)-associated centromeric complex that targets CENPA (MIM 117139) to centromeres and is required for proper kinetochore function and mitotic progression (Okada et al., 2006) [PubMed 16622420]. [supplied by OMIM, Mar 2008]

Product images:



Circular map for RC209587



Western blot validation of overexpression lysate (Cat# [LY409603]) using anti-DDK antibody (Cat# [TA50011-100]). Left: Cell lysates from untransfected HEK293T cells; Right: Cell lysates from HEK293T cells transfected with RC209587 using transfection reagent MegaTran 2.0 (Cat# [TT210002]).



Coomassie blue staining of purified CENPL protein (Cat# [TP309587]). The protein was produced from HEK293T cells transfected with CENPL cDNA clone (Cat# RC209587) using MegaTran 2.0 (Cat# [TT210002]).