

Product datasheet for RC209586

GSC (NM_173849) Human Tagged ORF Clone

Product data:

Product Type:	Expression Plasmids
Product Name:	GSC (NM_173849) Human Tagged ORF Clone
Tag:	Myc-DDK
Symbol:	GSC
Synonyms:	SAMS
Mammalian Cell Selection:	Neomycin
Vector:	pCMV6-Entry (PS100001)
E. coli Selection:	Kanamycin (25 ug/mL)
ORF Nucleotide Sequence:	>RC209586 ORF sequence Red=Cloning site Blue=ORF Green=Tags(s)

TTTTGTAATACGACTCACTATAGGGCGGCCGGAATTCGTCGACTGGATCCGGTACCGAGGAGATCTGCC
GCC**CGATCGCC**

ATGCCCGCCAGCATGTTTCAGCATCGACAACATCCTAGCCGCCCGCCGCGCTGCAAGGACTCGGTGTTGC
CGGTGGCGCACAGCGCGGCGGCTCCCGTCGTCTCCCGGCCCTGCACGGGACTCGCTCTACGGCGCCAG
CGGCGGCGCCTCCTCGGACTATGGCGCTTCTACCGCGCCCGTGGCCCCGGCGGCGGGCCTCCCG
GCCGCGGTGAGCGGCTCCCGCTCGGCTACAACAACACTTCTACGGGCAGCTGCAGTGCAGGCGGCGC
CCGTGGGCCCGGCTGCTGCGGGCCGTGCCGCCGCTGGGCGCCAGCAGTGTCTGCTCCCGACGCC
CCCAGGCTACGAGGGCCCGGTTCCGGTGTGGTGTCCCGGTACCGCACCAGATGCTGCCCTACATGAAC
GTGGGCACGCTGTGCGCACCGAGCTGCAGCTTCTCAACCAGCTGCACTGTGCGCGGAAGCGGCGGACC
GCACCATCTTCACTGACGAGCAGCTCGAAGCTCTCGAAGCCTTCCAGGAGACCAAGTACCCGGACGT
GGGCACGCGCAGCAGCTGGCCCGAAAGTGCACCTCCCGGAGGAGAAAGTGGAGGTCTGGTTTAAGAAC
CGCCGCGCAAATGGAGGCGGCAGAAAGCGGTCTCATCAGAGGAGTCGGAGAACGCGGAGAAGTGGAAAC
AGACGTCGTCGAAGGCGTACCGGAGAAGAGGGAAGGAAGGTAAGGTAAGGCGATTGGACTCGGACAG
C

ACGCGTACGCGGCCGCTCGAGCAGAAACTCATCTCAGAAGAGGATCTGGCAGCAAATGATATCCTGGATT
ACAAGGATGACGACGATAAGGTTTAA



[View online »](#)

Protein Sequence: >RC209586 protein sequence
 Red=Cloning site Green=Tags(s)

MPASMFSIDNILAARPRCKDSVLPVAHSAAPVVPALHGDSL YGASGGASSDYGAFYPRPVAPGGAGLP
 AAVSGSRLGYNNFYGQLHVQAAPVGPACCGAVPPLGAQQCSCVPTPPGYEGPGSVLVSPVPHQMLPYMN
 VGTLSRTELQLLNQLHCRKRKRHRRTIF TDEQLEALENL FQETKYPDVGTREQLARKVHLREEKVEVWFKN
 RRAKWRRQKRSSSESENAEKWNKTSSSKASPEKREEEGKSDLDSDS

TRTRPLEQKLISEEDLAANDILDYKDDDDKV

Chromatograms: https://cdn.origene.com/chromatograms/mk6212_h08.zip

Restriction Sites: SgfI-MluI

Cloning Scheme:

Cloning sites used for ORF Shuttling:



* The last codon before the Stop codon of the ORF

ACCN: NM_173849

ORF Size: 771 bp

OTI Disclaimer: The molecular sequence of this clone aligns with the gene accession number as a point of reference only. However, individual transcript sequences of the same gene can differ through naturally occurring variations (e.g. polymorphisms), each with its own valid existence. This clone is substantially in agreement with the reference, but a complete review of all prevailing variants is recommended prior to use. [More info](#)

OTI Annotation: This clone was engineered to express the complete ORF with an expression tag. Expression varies depending on the nature of the gene.

Components: The ORF clone is ion-exchange column purified and shipped in a 2D barcoded Matrix tube containing 10ug of transfection-ready, dried plasmid DNA (reconstitute with 100 ul of water).

Reconstitution Method:

1. Centrifuge at 5,000xg for 5min.
2. Carefully open the tube and add 100ul of sterile water to dissolve the DNA.
3. Close the tube and incubate for 10 minutes at room temperature.
4. Briefly vortex the tube and then do a quick spin (less than 5000xg) to concentrate the liquid at the bottom.
5. Store the suspended plasmid at -20°C. The DNA is stable for at least one year from date of shipping when stored at -20°C.

RefSeq: [NM_173849.3](#)

RefSeq Size: 1217 bp

RefSeq ORF: 774 bp

Locus ID: 145258

UniProt ID: [P56915](#)

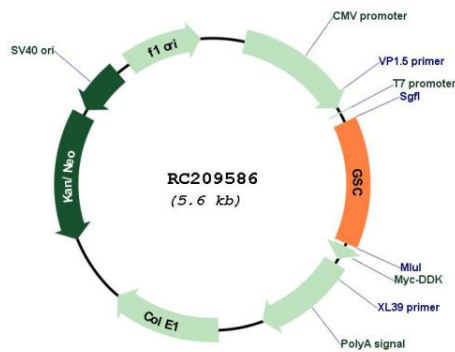
Cytogenetics: 14q32.13

Protein Families: Transcription Factors

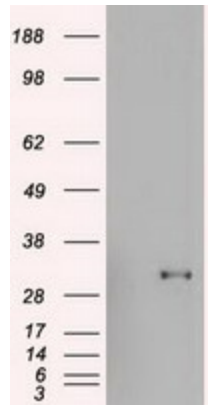
MW: 28.1 kDa

Gene Summary: This gene encodes a member of the bicoid subfamily of the paired (PRD) homeobox family of proteins. The encoded protein acts as a transcription factor and may be autoregulatory. A similar protein in mice plays a role in craniofacial and rib cage development during embryogenesis. [provided by RefSeq, Jul 2008]

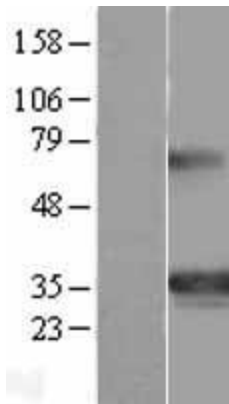
Product images:



Circular map for RC209586



HEK293T cells were transfected with the pCMV6-ENTRY control (Cat# [PS100001], Left lane) or pCMV6-ENTRY GSC (Cat# RC209586, Right lane) cDNA for 48 hrs and lysed. Equivalent amounts of cell lysates (5 ug per lane) were separated by SDS-PAGE and immunoblotted with anti-GSC(Cat# [TA500023]). Positive lysates [LY406285] (100ug) and [LC406285] (20ug) can be purchased separately from OriGene.



Western blot validation of overexpression lysate (Cat# [LY406285]) using anti-DDK antibody (Cat# [TA50011-100]). Left: Cell lysates from untransfected HEK293T cells; Right: Cell lysates from HEK293T cells transfected with RC209586 using transfection reagent MegaTran 2.0 (Cat# [TT210002]).