

Product datasheet for **RC209577**

PNPLA3 (NM_025225) Human Tagged ORF Clone

Product data:

Product Type:	Expression Plasmids
Product Name:	PNPLA3 (NM_025225) Human Tagged ORF Clone
Tag:	Myc-DDK
Symbol:	PNPLA3
Synonyms:	ADPN; C22orf20; iPLA(2)epsilon
Mammalian Cell Selection:	Neomycin
Vector:	pCMV6-Entry (PS100001)
E. coli Selection:	Kanamycin (25 ug/mL)



[View online »](#)

ORF Nucleotide Sequence:

>RC209577 ORF sequence
 Red=Cloning site Blue=ORF Green=Tags(s)

TTTTGTAATACGACTCACTATAGGGCGGCCGGGAATTCGTCGACTGGATCCGGTACCGAGGAGATCTGCC
 GCC**GCGATCGCC**

ATGTACGACGCAGAGCGCGGCTGGAGCTTGTCTTCGCGGGCTGCGGCTTCTGCGGCTTCTACCAGTCG
 GGGCGACCGCTGCCTGAGCGAGCACGCCCGCACCTCCTCCGCGACGCGCGCATGTTGTCGGCGCTTC
 GGCCGGGGCGTTGCACTGCGTCGCGCTCCTCCTCCGGTATCCCGCTGGAGCAGACTCTGCAGGTCCTCTCA
 GATCTTGTGCGGAAGGCCAGGAGTCGGAACATTGGCATCTTCCATCCATCCTTCAACTTAAGCAAGTTCC
 TCCGACAGGGTCTCGGCAATGCCTCCCGGCAATGTCCACCAGCTCATCTCCGGCAAAATAGGCATCTC
 TCTTACCAGAGTGTCTGATGGGAAAACGTTCTGGTGTCTGACTTTCGGTCCAAAGCAAGTCTGGAT
 GCCTTGGTATGTTCTGCTTCATGCCTTCTACAGTGGCCTTATCCCTCCTTCTCAGAGGCGTGCAT
 ATGTGGATGGAGGAGTGTGACAACTACCTTCATTGATGCCAAAACAACCATCACCGTGTCCCCTT
 CTATGGGAGTACGACATCTGCCCTAAAGTCAAGTCCACGAACCTTCTTTCATGTGGACATACCAAGCTC
 AGTCTACGCCTTGCACAGGGAACCTCTACCTTCTCTCGAGAGCTTTTGTCCCGGATCTCAAGGTGC
 TGGGAGAGATATGCCTTCGAGGATATTTGGATGCATTCAGGTTCTTGAAGAGAAGGGCATCTGCAACAG
 GCCCCAGCCAGGCTGAAGTCACTCAGAAAGGATGGATCCTGAGGTCGCCATGCCAGCTGGGCAAAAC
 ATGAGTCTGGATTCTCCCGGAGTCCGCTGCCTTGGCTGTGAGGCTGGAGGGAGATGAGCTGCTAGACC
 ACCTGCGTCTCAGCATCTGCCCTGGGATGAGAGCATCTGGACACCTCTCGCCAGGCTCGCTACAGC
 ACTGAGTGAAGAAATGAAAGACAAAGGTGGATACATGAGCAAGATTTGCAACTTGCTACCCATTAGGATA
 ATGTCTTATGTAATGCTGCCCTGTACCTGCCTGTGGAATCTGCCATTGCGATTGTCCAGAGACTGGTGA
 CATGGCTCCAGATATGCCCGACGATGCTCTGTGGTTCAGTGGGTGACCTCACAGGTTTCACTCGAGT
 GCTGATGTGTCTGCTCCCGCCTCCAGGTCCAAATGCCAGTGTGAGCAGCAACAGGCTCCCATGCACA
 CCTGAGCAGGACTGGCCCTGCTGGACTCCTGCTCCCGGAGGGCTGTCCAGCAGAGACCAAGCAGAGG
 CCACCCCGCGGTCCATCCTCAGGTCCAGCTGAACTTCTTCTTGGGAATAAAGTACCTGCTGGTCTGA
 GGGGCTCTCCACCTTTCCAGTTTTTCACTAGAGAAGAGTCTG

ACGCGTACGCGGCCGCTCGAGCAGAAACTCATCTCAGAAGAGGATCTGGCAGCAATGATATCCTGGATT
 ACAAGGATGACGACGATAAGGTTTAA

Protein Sequence:

>RC209577 protein sequence
 Red=Cloning site Green=Tags(s)

MYDAERGWSLSFAGCGFLGFYHVGATRCLSEHAPHLLRDARMLFGASAGALHCVGLVSGIPLQTLQVLS
 DLVRKARSRNIGIFHPSFNLKFLRQGLKCLPANVHQLISGKIGISLTRVSDGENVLVSDFRSKDEVVD
 ALVCSCFMPFYSLIPPSFRGVRYVDGGVSDNVFIDAKTTITVSPFYGEYDIPKVKSTNFLHVDITKL
 SLRLCTGNLYLLSRAFVPPDLKVLGEICLRGYLDAFRFLEEKGINRPQPLKSSSEGMDPEVAMPSWAN
 MSLDSSPESAALAVRLEGDELLDHLRLSILPWDESILDLSPLRATALSEEMKDKGGYMSKICNLLPIRI
 MSYVMLPCTLPVESAIIVQRLVTWLPDMPDVLWLQWVTSQVFTRVLMCLLPASRSQMPVSSQQASPCT
 PEQDWPCWTPCSPEGPCAETKAEATPRILRSSLNFFLGNKVPAGAEGLSTFPFSLEKSL

TRTRPLEQKLISEEDLAANDILDYKDDDDKV

Chromatograms:

https://cdn.origene.com/chromatograms/mk6355_g12.zip

Restriction Sites:

Sgfl-Mlul

Cloning Scheme:


ACCN: NM_025225

ORF Size: 1443 bp

OTI Disclaimer: The molecular sequence of this clone aligns with the gene accession number as a point of reference only. However, individual transcript sequences of the same gene can differ through naturally occurring variations (e.g. polymorphisms), each with its own valid existence. This clone is substantially in agreement with the reference, but a complete review of all prevailing variants is recommended prior to use. [More info](#)

OTI Annotation: This clone was engineered to express the complete ORF with an expression tag. Expression varies depending on the nature of the gene.

Components: The ORF clone is ion-exchange column purified and shipped in a 2D barcoded Matrix tube containing 10ug of transfection-ready, dried plasmid DNA (reconstitute with 100 ul of water).

Reconstitution Method:

1. Centrifuge at 5,000xg for 5min.
2. Carefully open the tube and add 100ul of sterile water to dissolve the DNA.
3. Close the tube and incubate for 10 minutes at room temperature.
4. Briefly vortex the tube and then do a quick spin (less than 5000xg) to concentrate the liquid at the bottom.
5. Store the suspended plasmid at -20°C. The DNA is stable for at least one year from date of shipping when stored at -20°C.

Note: Plasmids are not sterile. For experiments where strict sterility is required, filtration with 0.22um filter is required.

RefSeq: [NM_025225.3](#)

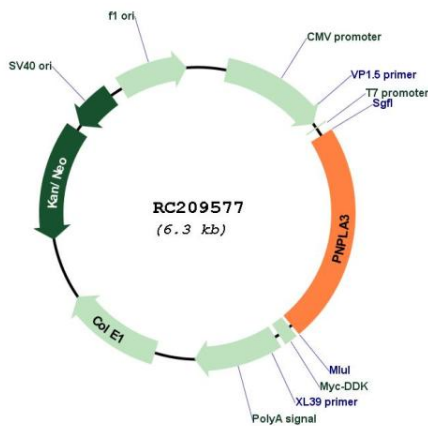
RefSeq Size: 2805 bp

RefSeq ORF: 1446 bp

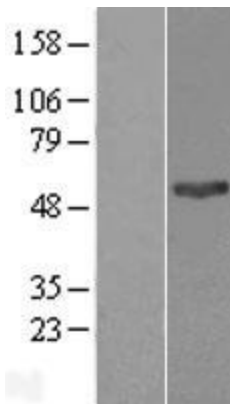
Locus ID: 80339

UniProt ID: [Q9NST1](#)
Cytogenetics: 22q13.31
Domains: Patatin
Protein Pathways: Glycerolipid metabolism, Glycerophospholipid metabolism, Limonene and pinene degradation, Metabolic pathways, Phenylalanine metabolism, Tyrosine metabolism
MW: 52.8 kDa
Gene Summary: The protein encoded by this gene is a triacylglycerol lipase that mediates triacylglycerol hydrolysis in adipocytes. The encoded protein, which appears to be membrane bound, may be involved in the balance of energy usage/storage in adipocytes. [provided by RefSeq, Jul 2008]

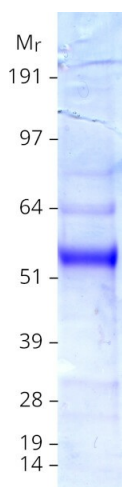
Product images:



Circular map for RC209577



Western blot validation of overexpression lysate (Cat# [LY410772]) using anti-DDK antibody (Cat# [TA50011-100]). Left: Cell lysates from untransfected HEK293T cells; Right: Cell lysates from HEK293T cells transfected with RC209577 using transfection reagent MegaTran 2.0 (Cat# [TT210002]).



Coomassie blue staining of purified PNPLA3 protein (Cat# [TP309577]). The protein was produced from HEK293T cells transfected with PNPLA3 cDNA clone (Cat# RC209577) using MegaTran 2.0 (Cat# [TT210002]).