

Product datasheet for RC209572

ELK4 (NM_021795) Human Tagged ORF Clone

Product data:

Product Type:	Expression Plasmids
Product Name:	ELK4 (NM_021795) Human Tagged ORF Clone
Tag:	Myc-DDK
Symbol:	ELK4
Synonyms:	SAP1
Mammalian Cell Selection:	Neomycin
Vector:	pCMV6-Entry (PS100001)
E. coli Selection:	Kanamycin (25 ug/mL)
ORF Nucleotide Sequence:	>RC209572 ORF sequence Red=Cloning site Blue=ORF Green=Tags(s)

TTTTGTAATACGACTCACTATAGGGCGGCCGGAATTCGTCGACTGGATCCGGTACCGAGGAGATCTGCC
GCC**CGATCGCC**

ATGGACAGTGCTATCACCTGTGGCAGTTCCTTCTTCAGCTCCTGCAGAAGCCTCAGAACAAGCACATGA
TCTGTTGGACCTAATGATGGGCAGTTAAAGCTTTGCAGGCAGAAGAGGTGGCTCGTCTCTGGGGGAT
TCGCAAGAACAAGCCTAACATGAATTATGACAACTCAGCCGAGCCCTCAGATACTATTATGTAAGAAT
ATCATCAAAAAAGTGAATGGTCAGAAGTTGTGTACAAGTTGTCTCTTATCCAGAGATTTGAACATGG
ATCCAATGACAGTGGGCAGGATTGAGGGTGACTGTGAAAGTTAACTTCAGTGAAGTCAGCAGCAGTTC
CAAAGATGTGGAGAATGGAGGAAAGATAAACCACCTCAGCCTGGTGCCAAGACCTCTAGCCGCAATGAC
TACATACACTCTGGCTTATATTCTTCACTTACTCTCAACTCTTTGAACTCCTCCAATGTAAGCTTTTCA
AATTGATAAAGACTGAGAATCCAGCCGAGAAAATGGCAGAGAAAAATCTCCTCAGGAGCCACACCATC
TGTCAATCAATTTGTCACGACACCTTCCAAAAGCCACCGGTTGAACCTGTTGCTGCCACCATTTCAATT
GGCCCAAGTATTTCTCCATCTTCAGAAGAACTATCCAAGCTTTGGAGACATTGGTTTCCCAAACTGC
CTTCCCTGGAAGCCCAACCTCTGCCTAACGTAATGACTGCTTTTCCACCACACCACCATTTTCGTC
CATACCCCTTTGCAGGAACCTCCAGAACACCTTACCACCAGTCTCACCCAGACATCGACACA
GACATTGATTAGTGGCTTCTCAGCCAATGGAACCTCCAGAGAATTTGTCAGTGGAGCCTAAAGACCAGG
ATTCAGTCTTGCTAGAAAAGGACAAAGTAAATAATTCATCAAGATCCAAGAAACCCAAAGGGTTAGAAT
GGCACCCACCTTGTGATCACGAGCAGTGATCCAAGCCACTGGGAATACTGAGCCATCTCTCCCTACA
GCTTCTCTACACCAGCATTTTTTTACAGGTAGCTTGCTCGCTCTTTATGGTGTACCATTGCTTTTCAT
TTATTTGCCCTTTTAAGCAAATCCAGAATTTATACACTCAAGTTTGCTTTCTGTTACTTAGGTTTGTCTT
AGAAAGGTTATGTGTGACTGTCATG

ACGCGTACGCGGCCGCTCGAGCAGAAAACCTCATCTCAGAAGAGGATCTGGCAGCAAATGATATCCTGGATT
ACAAGGATGACGACGATAAGGTTTAA



[View online >](#)

Protein Sequence: >RC209572 protein sequence
Red=Cloning site Green=Tags(s)

MDSAITLWQFLLQLLQKPQNKHMICWTSNDGQFKLLQAEVVARLWGIRKNKPNMNYDKLSRALRYYYVKN
 I IKKVNQKQFVYK FVSYPEILNMDPMTVGRIEGDCESLNFSEVSSSSKDVENGKDKPPQGAKTSSRND
 YIHSGLYSFTLNSLNSSNVKLFKLIK TENPAEKLAEEKSPQEPTPSVIK FVTTPSKKPPVEPVAATISI
 GPSISPSEETIQALETLVSPKLP SLEAPTSASNVM TAFATTPPISSIPPLQEPPRTPSPPLSSHDPIDT
 DIDSVASQPMELPENLSLEPKDQDSV LLEKDKVNNSSRSKPKGLELAPTLVITSSDPSPLGILSPSLPT
 ASLTPAFFSQVACSLFMVSPLLSFICPFKIQI NLYTQVCFLLLRFLERLCVTVM

TRTRPLEQKLISEEDLAANDILDYKDDDDKV

Chromatograms: https://cdn.origene.com/chromatograms/mk6354_e07.zip

Restriction Sites: SgfI-MluI

Cloning Scheme:



ACCN: NM_021795

ORF Size: 1215 bp

OTI Disclaimer: The molecular sequence of this clone aligns with the gene accession number as a point of reference only. However, individual transcript sequences of the same gene can differ through naturally occurring variations (e.g. polymorphisms), each with its own valid existence. This clone is substantially in agreement with the reference, but a complete review of all prevailing variants is recommended prior to use. [More info](#)

OTI Annotation: This clone was engineered to express the complete ORF with an expression tag. Expression varies depending on the nature of the gene.

Components: The ORF clone is ion-exchange column purified and shipped in a 2D barcoded Matrix tube containing 10ug of transfection-ready, dried plasmid DNA (reconstitute with 100 ul of water).

Reconstitution Method:

1. Centrifuge at 5,000xg for 5min.
2. Carefully open the tube and add 100ul of sterile water to dissolve the DNA.
3. Close the tube and incubate for 10 minutes at room temperature.
4. Briefly vortex the tube and then do a quick spin (less than 5000xg) to concentrate the liquid at the bottom.
5. Store the suspended plasmid at -20°C. The DNA is stable for at least one year from date of shipping when stored at -20°C.

RefSeq: [NM_021795.2](#), [NP_068567.1](#)

RefSeq Size: 3077 bp

RefSeq ORF: 1218 bp

Locus ID: 2005

UniProt ID: [P28324](#)

Cytogenetics: 1q32.1

Domains: ETS

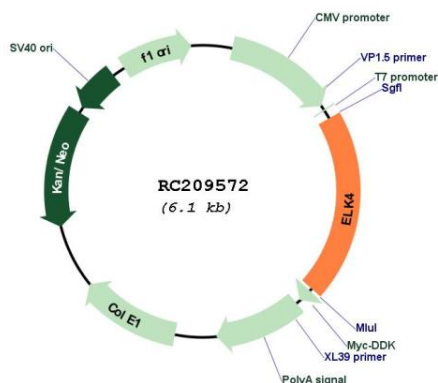
Protein Families: Druggable Genome, Transcription Factors

Protein Pathways: MAPK signaling pathway

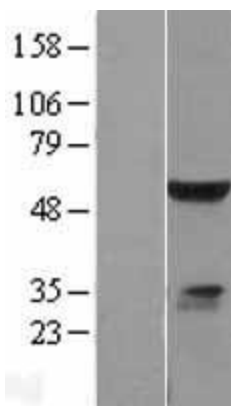
MW: 44.7 kDa

Gene Summary: This gene is a member of the Ets family of transcription factors and of the ternary complex factor (TCF) subfamily. Proteins of the TCF subfamily form a ternary complex by binding to the the serum response factor and the serum reponse element in the promoter of the c-fos proto-oncogene. The protein encoded by this gene is phosphorylated by the kinases, MAPK1 and MAPK8. Several transcript variants have been described for this gene. [provided by RefSeq, Jul 2008]

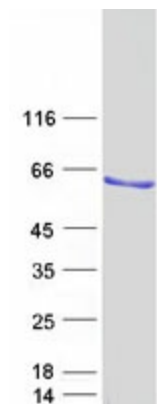
Product images:



Circular map for RC209572



Western blot validation of overexpression lysate (Cat# [LY411912]) using anti-DDK antibody (Cat# [TA50011-100]). Left: Cell lysates from untransfected HEK293T cells; Right: Cell lysates from HEK293T cells transfected with RC209572 using transfection reagent MegaTran 2.0 (Cat# [TT210002]).



Coomassie blue staining of purified ELK4 protein (Cat# [TP309572]). The protein was produced from HEK293T cells transfected with ELK4 cDNA clone (Cat# RC209572) using MegaTran 2.0 (Cat# [TT210002]).